

AXIS P1448-LE Network Camera

Fully-featured, all-around 4K surveillance

AXIS P1448-LE Network Camera is a cost-effective, all-around camera providing excellent image quality at full frame rate in 8 megapixel resolution and in 16:9 format. Fully-featured with Lightfinder, OptimizedIR and Forensic WDR, forensic details are captured even in challenging light conditions including low light and strong backlight. Outdoor-ready with a wide temperature range, this sturdy and impact resistant camera has shock detection and is ready for extreme temperatures. AXIS P1448-LE offers easy installation with remote zoom and focus for fine tuning of the picture. With Axis Zipstream, I/O and audio support, AXIS P1448-LE got you covered.

- > **4K Ultra HD resolution in full frame rate**
- > **Ease of installation**
- > **Forensic WDR, Lightfinder, and OptimizedIR**
- > **I/O and audio support**
- > **Axis Zipstream technology**



AXIS P1448-LE Network Camera

Camera	
Image sensor	1/2.5" progressive scan RGB CMOS
Lens	2.8–9.8 mm, F1.6 Horizontal field of view 109°–37° Vertical field of view 57°–21° Varifocal, Remote focus and zoom, P-Iris control, IR corrected
Day and night	Automatically removable infrared-cut filter
Minimum illumination	Color: 0.18 lux, at 50 IRE F1.6 B/W: 0.04 lux, at 50 IRE F1.6 0 lux with IR illumination on
Shutter speed	1/62500 s to 2 s
Video	
Video compression	H.264 (MPEG-4 Part 10/AVC) Baseline, Main and High Profiles Motion JPEG
Resolution	3840x2160 to 160x90
Frame rate	Up to 25/30 fps (50/60 Hz) in all resolutions
Video streaming	Multiple, individually configurable streams in H.264 and Motion JPEG Axis Zipstream technology in H.264 Controllable frame rate and bandwidth VBR/ABR/MBR H.264
Multi-view streaming	Up to 8 individually cropped out view areas
Image settings	Saturation, contrast, brightness, sharpness, Forensic WDR: Up to 120 dB depending on scene, white balance, day/night threshold, exposure mode, exposure zones, compression, orientation: auto, 0°, 90°, 180°, 270° including Corridor Format, mirroring of images, dynamic text and image overlay, privacy masks
Pan/Tilt/Zoom	Digital PTZ
Audio	
Audio streaming	Audio in, simplex
Audio encoding	24bit LPCM, AAC-LC 8/16/32/48 kHz, G.711 PCM 8 kHz, G.726 ADPCM 8 kHz, Opus 8/16/48 kHz Configurable bit rate
Audio input/output	External microphone input or line input Automatic gain control
Network	
Security	Password protection, IP address filtering, HTTPS ^a encryption, IEEE 802.1X (EAP-TLS) ^a network access control, digest authentication, user access log, centralized certificate management, brute force delay protection, signed firmware
Supported protocols	IPv4, IPv6 USGv6, HTTP, HTTPS ^a , HTTP/2, SSL/TLS ^a , QoS Layer 3 DiffServ, FTP, SFTP, CIFS/SMB, SMTP, Bonjour, UPnP [®] , SNMP v1/v2c/v3 (MIB-II), DNS, DynDNS, NTP, RTSP, RTP, SRTP, TCP, UDP, IGMPv1/v2/v3, RTCP, ICMP, DHCPv4/v6, ARP, SOCKS, SSH, LLDP, MQTT v3.1.1, Syslog
System integration	
Application Programming Interface	Open API for software integration, including VAPIX [®] and AXIS Camera Application Platform; specifications at axis.com AXIS Video Hosting System (AVHS) with One-Click Connection One-click cloud connection ONVIF [®] Profile G, ONVIF [®] Profile S and ONVIF [®] Profile T, specification at onvif.org
Event conditions	Analytics Detectors: live stream accessed, video motion detection, audio detection, day/night mode, shock detection, tampering Hardware: network, temperature Input Signal: digital input port, manual trigger, virtual inputs Storage: disruption, recording System: system ready Time: recurrence, use schedule
Event actions	Record video: SD card and network share Upload of images or video clips: FTP, SFTP, HTTP, HTTPS, network share and email Pre- and post-alarm video or image buffering for recording or upload Notification: email, HTTP, HTTPS, TCP and SNMP trap PTZ: PTZ preset, start/stop guard tour

	Overlay text, external output activation, day/night mode
Data streaming	Event data
Built-in installation aids	Pixel counter, remote zoom (3.5x optical), remote focus, auto rotation
Analytics	
Applications	Included AXIS Motion Guard, AXIS Fence Guard, AXIS Loitering Guard AXIS Video Motion Detection Supported AXIS Digital Autotracking, AXIS Perimeter Defender, AXIS Cross Line Detection Support for AXIS Camera Application Platform enabling installation of third-party applications, see axis.com/acap
General	
Casing	IP66/IP67-, NEMA 4X-, and IK10-rated casing Polycarbonate blend and aluminium Color: white NCS S 1002-B
Sustainability	PVC free
Memory	1024 MB RAM, 512 MB Flash
Power	Power over Ethernet IEEE 802.3af/802.3at Type 1 Class 3 Typical: 7.1 W, max 12.95 W
Connectors	Shielded RJ45 10BASE-T/100BASE-TX PoE 3.5 mm mic/line in I/O: 4-pin terminal block for 1 alarm input and 1 output
IR illumination	Optimized IR with power-efficient, long-life 850 nm IR LEDs Range of reach 25 m (82 ft) or more depending on the scene
Storage	Support for microSD/microSDHC/microSDXC card Support for SD card encryption (AES-XTS-Plain64 256bit) Recording to network-attached storage (NAS) For SD card and NAS recommendations see axis.com
Operating conditions	-40 °C to 60 °C (-40 °F to 140 °F) Maximum temperature according to NEMA TS2 (2.2.7): 74 °C (165 °F) Humidity 10–100% RH (condensing)
Storage conditions	-40 °C to 65 °C (-40 °F to 149 °F) Humidity 5–95% RH (non-condensing)
Approvals	EMC EN 55032 Class A, EN 50121-4, IEC 62236-4, EN 55024, EN 61000-6-1, EN 61000-6-2, FCC Part 15 Subpart B Class A, ICES-003 Class A, VCCI Class A, RCM AS/NZS CISPR 32 Class A, KCC KN32 Class A, KN35 Safety IEC/EN/UL 62368-1, IEC/EN/UL 60950-22, IS 13252, IEC 62471 Environment IEC 60068-2-1, IEC 60068-2-2, IEC 60068-2-6, IEC 60068-2-14, IEC 60068-2-27, IEC 60068-2-78, IEC/EN 60529 IP66/IP67, IEC/EN 62262 IK10, NEMA 250 Type 4X, NEMA TS 2 (2.2.7-2.2.9) Network NIST SP500-267
Weight	With weather shield: 1 kg (2.2 lb)
Dimensions	Ø132 x 260 mm (Ø5 3/16 x 10 1/4 in)
Included accessories	Installation guide, Windows [®] decoder 1-user license, drill hole template, connector kit, mounting bracket AXIS Weather Shield L
Optional accessories	AXIS T94F01M J-Box/Gang Box Plate, AXIS T91A47 Pole Mount, AXIS T94P01B Corner Bracket, AXIS T94F01P Conduit Back Box, AXIS Weather Shield K, Axis PoE Midspans For more accessories, see axis.com
Video management software	AXIS Companion, AXIS Camera Station, video management software from Axis' Application Development Partners available at axis.com/vms
Languages	English, German, French, Spanish, Italian, Russian, Simplified Chinese, Japanese, Korean, Portuguese, Traditional Chinese
Warranty	5-year warranty, see axis.com/warranty

a. This product includes software developed by the OpenSSL Project for use in the OpenSSL Toolkit. (openssl.org), and cryptographic software written by Eric Young (ey@cryptsoft.com).

Environmental responsibility:

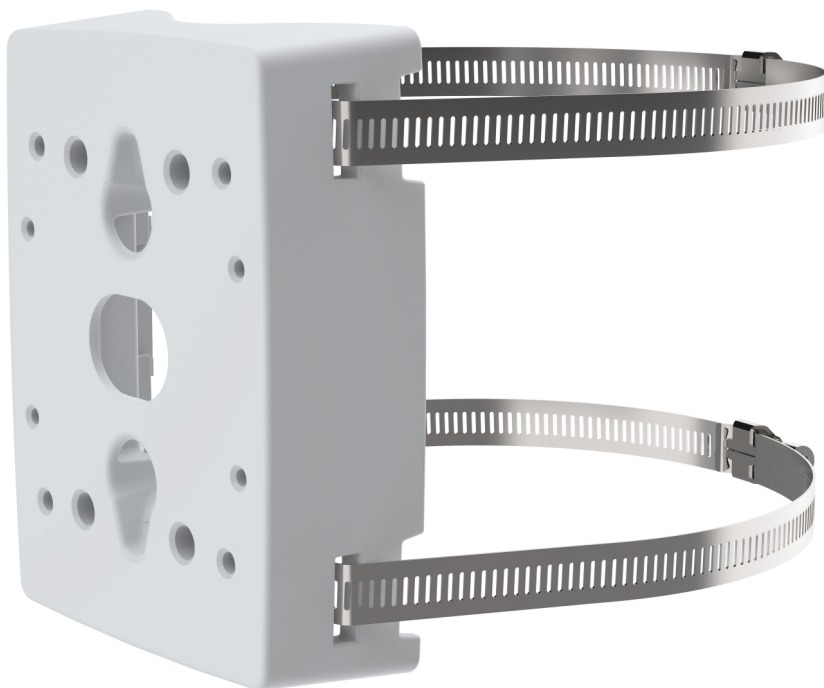
axis.com/environmental-responsibility

AXIS T91B47

Pole mount for different pole diameters

AXIS T91B47 Pole Mount is designed for both indoor and outdoor use. It is available in two versions with different lengths of marine-grade (SS316L) stainless steel straps. One version for poles with diameter between 50–150 mm (2–6 in), and one for poles with diameter between 100–410 mm (4–16 in) in diameter. Additionally, it can be used for attaching cameras to beams. When AXIS T91B47 is used for Axis fixed dome or fixed bullet cameras, no additional accessories such as pendant kits are required, ensuring a cost-efficient solution.

- > **Suitable for a wide range of pole diameters**
- > **Safe and easy to install**
- > **IK10-rated vandal resistance**
- > **NEMA 4X-rated corrosion protection**
- > **Axis stainless steel (SS316L) straps included**



AXIS T91B47

Models	AXIS T91B47 Pole Mount 50–150 mm AXIS T91B47 Pole Mount 100–410 mm	Sustainability	PVC free
General		Environment	Indoor Outdoor
Supported products	Compatible Axis network cameras: Outdoor fixed box cameras: AXIS M11/P13/Q16 Series Fixed bullet cameras: AXIS P14/Q17 Series Fixed dome cameras: AXIS M30/P32/P33/Q35/Q36 Series Thermal cameras: AXIS Q19/Q29 Series Compatible Axis accessories: AXIS T91E61 Wall Mount AXIS T94Q01A Wall Mount AXIS P33 Mounting Bracket AXIS T92E Housing Series AXIS T93F Housing Series AXIS T93G05 Protective Housing	Approvals	Safety IEC/EN/UL 60950-1, IEC/EN/UL 60950-22 Environment EN 50581, NEMA 250 Type 4X ^a Impact IEC 62262 IK10
Pole diameter	AXIS T91B47 Pole Mount 50–150 mm: 50–150 mm (2–6 in) AXIS T91B47 Pole Mount 100–410 mm: 100–410 mm (4–16 in)	Dimensions	111 x 42 x 147 mm (4 3/8 x 1 5/8 x 5 13/16 in)
Maximum load	15 kg (33 lb)	Weight	0.3 kg (0.7 lb) without steel straps
Cable routing	Back: Cable hole Side: U-shaped cable hole (26 mm/1 in)	Included accessories	Installation Guide Cable ties, Screws Stainless steel straps
Casing	NEMA 4X- and IK10-rated powder-coated aluminum mount Color: white NCS S 1002-B	Warranty	Axis 3-year warranty, see www.axis.com/warranty

a. *Corrosion protected only*

Environmental responsibility:

axis.com/environmental-responsibility