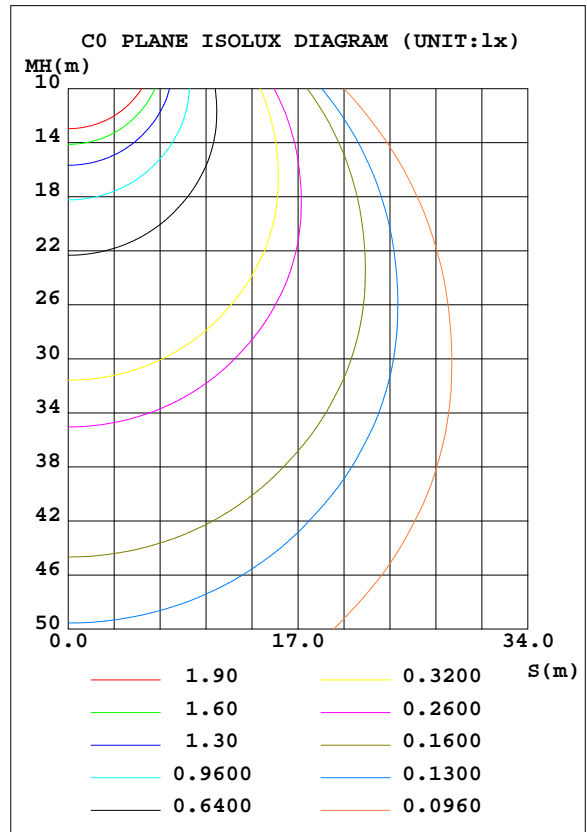
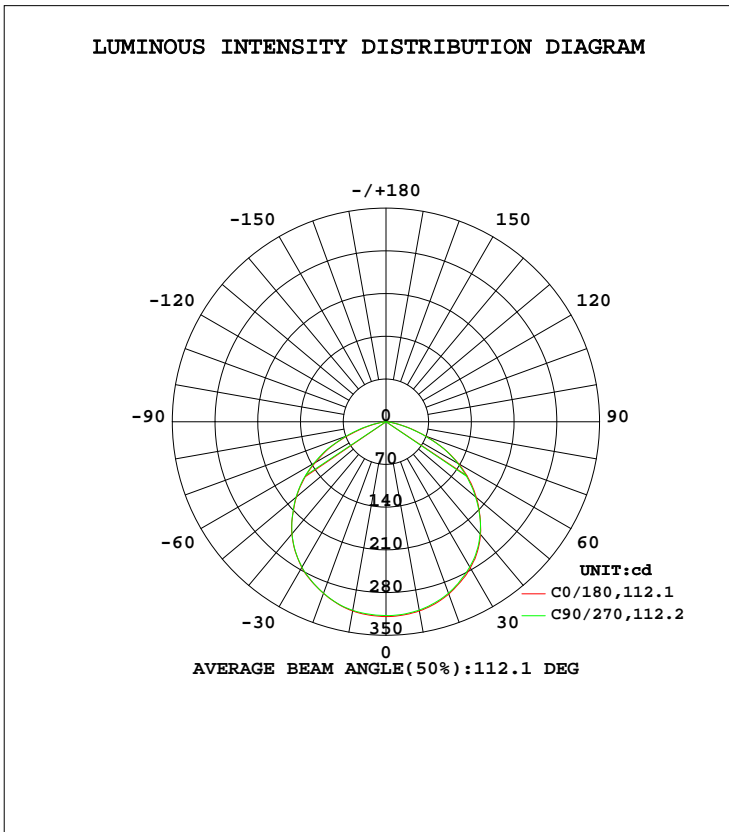


LUMINAIRE PHOTOMETRIC TEST REPORT

NAME: LED TRI-PROOF LIGHT	TYPE:BAWATY-7W-SW-40	WEIGHT:
SPEC.:7W 4000K	DIM.: L:657mm	SERIAL No.:
MFR.: DIMON TECHNOLOGY LTD	SUR.:	Shielding Angle:

DATA OF LAMP		PHOTOMETRIC DATA Eff: 125.00 lm/W			
MODEL	BAWATY-7W-SW-40	Imax(cd)	319.2	S/MH(C0/180)	1.28
NOMINAL POWER(W)	7	LOR(%)	100.0	S/MH(C90/270)	1.29
RATED VOLTAGE(V)	220	TOTAL FLUX(lm)	875.02	η UP, DN(C0-180)	0.1,49.8
NOMINAL FLUX(lm)	875	CIE CLASS	DIRECT	η UP, DN(C180-360)	0.1,50.0
LAMPS INSIDE	1	η up(%)	0.2	CIBSE SHR NOM	1.25
TEST VOLTAGE(V)	220	η down(%)	99.8	CIBSE SHR MAX	1.35



C Range: 0 - 360DEG
 C Interval: 22.5DEG
 Test Speed: HIGH
 Temperature:24.5DEG
 Operators:William
 Test Date:2017-12-16

γ Range: 0 - 180DEG
 γ Interval: 1.0DEG
 Test System:EVERFINE GO-R5000_V2 SYSTEM V2.0.352
 Humidity:65.7%
 Test Distance:26.000m [K=1.4470]
 Remarks:

Checker: DENNY

Assessor: JOE

ZONAL FLUX DIAGRAM

ZONAL FLUX DIAGRAM:

γ	C0	C45	C90	C135	C180	C225	C270	C315	γ	Φ zone	Φ total	%lum, lamp
10	314.8	314.7	313.4	312.5	314.8	313.6	313.8	313.1	0- 10	30.15	30.15	3.45,3.45
20	300.5	300.3	299.0	297.9	299.3	299.1	299.1	298.8	10- 20	86.92	117.1	13.4,13.4
30	276.4	275.8	274.7	273.9	275.8	274.8	275.4	275.2	20- 30	133.0	250.1	28.6,28.6
40	241.0	239.8	239.9	237.9	240.1	238.6	239.7	240.0	30- 40	162.0	412.0	47.1,47.1
50	193.5	192.5	191.4	189.8	191.5	191.7	192.5	193.0	40- 50	166.9	578.9	66.2,66.2
60	137.2	137.6	135.5	133.6	133.9	135.8	136.6	139.0	50- 60	147.3	726.2	83,83
70	69.98	70.03	68.04	67.26	66.87	68.47	70.15	72.66	60- 70	102.0	828.2	94.7,94.7
80	13.01	13.58	13.23	12.92	12.28	14.11	13.67	15.77	70- 80	41.25	869.5	99.4,99.4
90	0.0569	0.0302	0.0284	0.0346	0.0206	0.0206	0.0966	0.2745	80- 90	4.079	873.6	99.8,99.8
100	0.0181	0.0249	0.0268	0.0232	0.0627	0.0626	0.0624	0.0555	90-100	0.0392	873.6	99.8,99.8
110	0.0144	0.0212	0.0334	0.0267	0.1732	0.1593	0.1665	0.1599	100-110	0.0710	873.7	99.8,99.8
120	0.1105	0.1104	0.0969	0.0895	0.2727	0.2585	0.2774	0.2844	110-120	0.1314	873.8	99.9,99.9
130	0.2353	0.2216	0.2424	0.1869	0.3323	0.2862	0.3010	0.3051	120-130	0.1979	874.0	99.9,99.9
140	0.4346	0.3807	0.4369	0.3395	0.3810	0.3186	0.3610	0.3603	130-140	0.2423	874.2	99.9,99.9
150	0.5400	0.5470	0.5545	0.5126	0.4710	0.4294	0.4993	0.4989	140-150	0.2784	874.5	99.9,99.9
160	0.5994	0.6024	0.5894	0.5819	0.5738	0.5526	0.6034	0.5751	150-160	0.2537	874.8	100,100
170	0.6784	0.6923	0.7210	0.6719	0.6369	0.6375	0.6647	0.6929	160-170	0.1762	875.0	100,100
180	0.7408	0.7409	0.7422	0.7206	0.7200	0.7063	0.7490	0.7136	170-180	0.0670	875.0	100,100
DEG	LUMINOUS INTENSITY:cd									UNIT:lm		

Conical surface Flux(90deg): 496.51 lm

%lum = 56.7%
%lamp = 56.7%

Conical surface Flux(120deg): 726.22 lm

%lum = 83.0%
%lamp = 83.0%

C Range: 0 - 360DEG
C Interval: 22.5DEG
Test Speed: HIGH
Temperature:24.5DEG
Operators:William
Test Date:2017-12-16

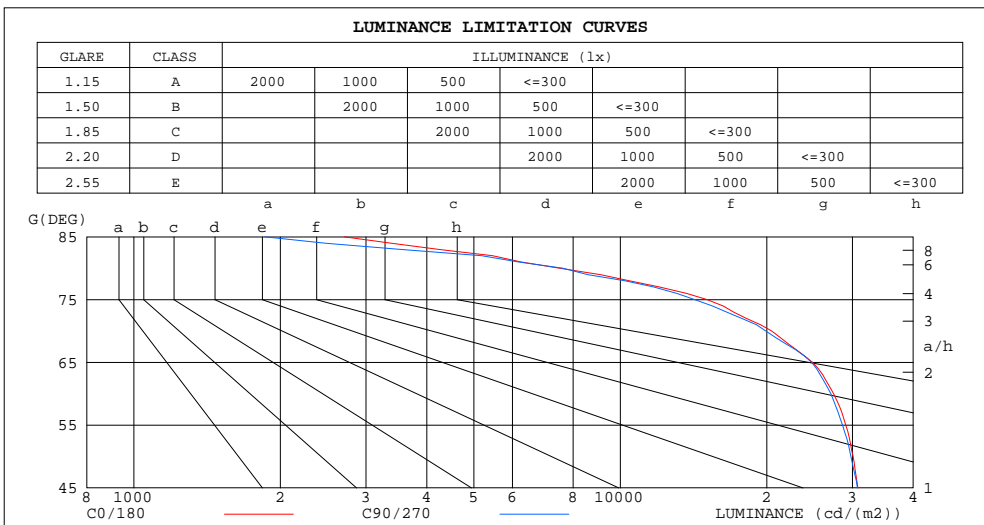
γ Range: 0 - 180DEG
γ Interval: 1.0DEG
Test System:EVERFINE GO-R5000_V2 SYSTEM V2.0.352
Humidity:65.7%
Test Distance:26.000m [K=1.4470]
Remarks:

Checker: DENNY

Assessor: JOE

LUMINANCE LIMITATION CURVES

NAME: LED TRI-PROOF LIGHT	TYPE:BAWATY-7W-SW-40	WEIGHT:
SPEC.:7W 4000K	DIM.: L:657mm	SERIAL No.:
MFR.: DIMON TECHNOLOGY LTD	SUR.:	Shielding Angle:



LUMINANCE cd/(m2)		
G(DEG)	C0/180	C90/270
85	2708	1860
80	7493	7621
75	15063	14209
70	20460	19894
65	24819	24731
60	27447	27093
55	29057	28637
50	30100	29778
45	30787	30724

C Range: 0 - 360DEG
 C Interval: 22.5DEG
 Test Speed: HIGH
 Temperature:24.5DEG
 Operators:William
 Test Date:2017-12-16

γ Range: 0 - 180DEG
 γ Interval: 1.0DEG
 Test System:EVERFINE GO-R5000_V2 SYSTEM V2.0.352
 Humidity:65.7%
 Test Distance:26.000m [K=1.4470]
 Remarks:

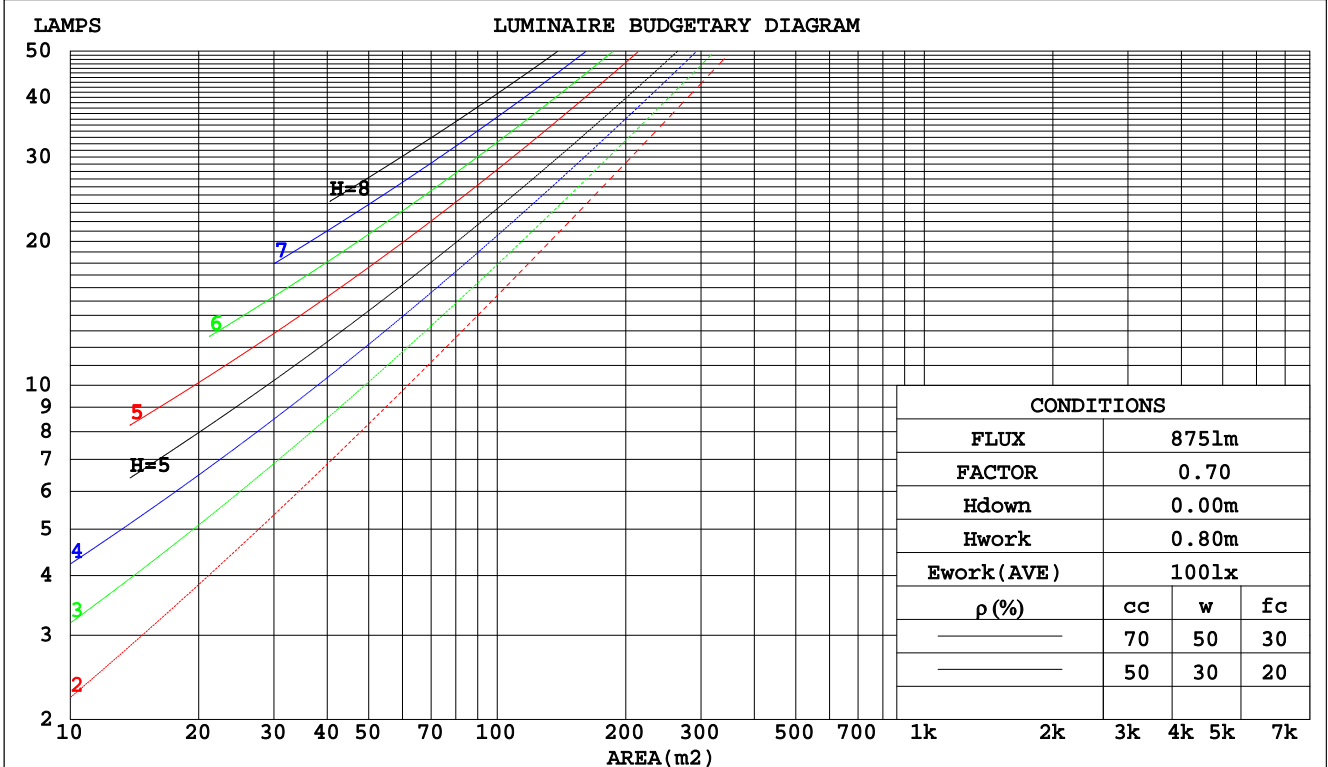
Checker: DENNY

Assessor: JOE

CU AND LUMINAIRE BUDGETARY ESTIMATE DIAGRAM

NAME: LED TRI-PROOF LIGHT	TYPE:BAWATY-7W-SW-40	WEIGHT:
SPEC.:7W 4000K	DIM.: L:657mm	SERIAL No.:
MFR.: DIMON TECHNOLOGY LTD	SUR.:	Shielding Angle:

pcc	80%			70%			50%			30%			10%			0
pw	50%	30%	10%	50%	30%	10%	50%	30%	10%	50%	30%	10%	50%	30%	10%	0
pfc	20%			20%			20%			20%			20%			0
RCR	RCR:Room Cavity Ratio															
	Coefficients of Utilization(CU)															
0.0	1.19	1.19	1.19	1.16	1.16	1.16	1.11	1.11	1.11	1.06	1.06	1.06	1.02	1.02	1.02	.00
1.0	1.05	1.01	.98	1.03	.99	.96	.99	.96	.93	.95	.92	.90	.91	.89	.88	.86
2.0	.92	.86	.80	.90	.84	.79	.87	.82	.78	.84	.79	.76	.81	.77	.74	.72
3.0	.81	.73	.67	.80	.72	.67	.77	.71	.65	.74	.69	.64	.71	.67	.63	.61
4.0	.72	.64	.57	.71	.63	.57	.68	.61	.56	.66	.60	.55	.64	.59	.54	.52
5.0	.64	.56	.49	.63	.55	.49	.61	.54	.48	.59	.53	.48	.57	.52	.47	.45
6.0	.58	.49	.43	.57	.49	.43	.55	.48	.42	.54	.47	.42	.52	.46	.42	.40
7.0	.53	.44	.38	.52	.44	.38	.50	.43	.37	.49	.42	.37	.47	.41	.37	.35
8.0	.48	.40	.34	.47	.39	.34	.46	.39	.33	.45	.38	.33	.44	.38	.33	.31
9.0	.44	.36	.30	.43	.36	.30	.42	.35	.30	.41	.35	.30	.40	.34	.30	.28
10.0	.41	.33	.28	.40	.33	.27	.39	.32	.27	.38	.32	.27	.37	.31	.27	.25



C Range: 0 - 360DEG
 C Interval: 22.5DEG
 Test Speed: HIGH
 Temperature:24.5DEG
 Operators:William
 Test Date:2017-12-16

γ Range: 0 - 180DEG
 γ Interval: 1.0DEG
 Test System:EVERFINE GO-R5000_V2 SYSTEM V2.0.352
 Humidity:65.7%
 Test Distance:26.000m [K=1.4470]
 Remarks:

Checker: DENNY

Assessor: JOE

WEC AND CCEC

NAME: LED TRI-PROOF LIGHT	TYPE:BAWATY-7W-SW-40	WEIGHT:
SPEC.:7W 4000K	DIM.: L:657mm	SERIAL No.:
MFR.: DIMON TECHNOLOGY LTD	SUR.:	Shielding Angle:

ρcc	80%			70%			50%			30%			10%			0
ρw	50%	30%	10%	50%	30%	10%	50%	30%	10%	50%	30%	10%	50%	30%	10%	0
ρfc	20%			20%			20%			20%			20%			0
RCR	RCR:Room Cavity Ratio						Wall Exitance Coefficients(WEC)									
0.0																
1.0	.282	.161	.051	.275	.157	.050	.262	.150	.048	.250	.144	.046	.239	.138	.045	
2.0	.274	.150	.046	.267	.147	.045	.256	.142	.044	.245	.138	.043	.235	.133	.042	
3.0	.257	.137	.041	.252	.135	.041	.242	.131	.040	.232	.127	.039	.223	.124	.038	
4.0	.240	.125	.037	.235	.123	.036	.226	.120	.036	.218	.117	.035	.210	.114	.035	
5.0	.224	.114	.033	.219	.113	.033	.211	.110	.032	.204	.107	.032	.197	.105	.032	
6.0	.208	.105	.030	.205	.103	.030	.197	.101	.029	.191	.099	.029	.184	.097	.029	
7.0	.195	.096	.027	.191	.095	.027	.185	.093	.027	.179	.092	.027	.173	.090	.026	
8.0	.182	.089	.025	.179	.088	.025	.174	.087	.025	.168	.085	.025	.163	.084	.024	
9.0	.171	.083	.023	.169	.082	.023	.163	.081	.023	.159	.079	.023	.154	.078	.023	
10.0	.161	.077	.021	.159	.077	.021	.154	.076	.021	.150	.074	.021	.146	.073	.021	

ρcc	80%			70%			50%			30%			10%			0
ρw	50%	30%	10%	50%	30%	10%	50%	30%	10%	50%	30%	10%	50%	30%	10%	0
ρfc	20%			20%			20%			20%			20%			0
RCR	RCR:Room Cavity Ratio						Ceiling Cavity Exitance Coefficients(CCEC)									
0.0	.192	.192	.192	.164	.164	.164	.112	.112	.112	.064	.064	.064	.021	.021	.021	
1.0	.180	.158	.138	.154	.135	.119	.105	.093	.082	.061	.054	.048	.019	.017	.015	
2.0	.171	.133	.101	.147	.115	.088	.100	.079	.061	.058	.046	.036	.019	.015	.012	
3.0	.163	.116	.077	.140	.100	.067	.096	.069	.047	.056	.040	.028	.018	.013	.009	
4.0	.156	.102	.061	.134	.088	.053	.092	.061	.037	.053	.036	.022	.017	.012	.007	
5.0	.149	.092	.049	.128	.079	.043	.088	.055	.030	.051	.033	.018	.016	.011	.006	
6.0	.142	.083	.041	.122	.072	.036	.084	.050	.025	.049	.030	.015	.016	.010	.005	
7.0	.135	.076	.035	.116	.066	.031	.080	.046	.022	.047	.027	.013	.015	.009	.004	
8.0	.129	.071	.030	.111	.061	.027	.077	.043	.019	.045	.025	.011	.014	.008	.004	
9.0	.123	.066	.027	.106	.057	.023	.073	.040	.017	.043	.024	.010	.014	.008	.003	
10.0	.117	.061	.024	.101	.053	.021	.070	.037	.015	.041	.022	.009	.013	.007	.003	

C Range: 0 - 360DEG
 C Interval: 22.5DEG
 Test Speed: HIGH
 Temperature:24.5DEG
 Operators:William
 Test Date:2017-12-16

γ Range: 0 - 180DEG
 γ Interval: 1.0DEG
 Test System:EVERFINE GO-R5000_V2 SYSTEM V2.0.352
 Humidity:65.7%
 Test Distance:26.000m [K=1.4470]
 Remarks:

Checker: DENNY

Assessor: JOE

UGR(Unified Glare Rating) Table

NAME: LED TRI-PROOF LIGHT		TYPE:BAWATY-7W-SW-40				WEIGHT:				
SPEC.:7W 4000K		DIM.: L:657mm				SERIAL No.:				
MFR.: DIMON TECHNOLOGY LTD		SUR.:				Shielding Angle:				
ceiling/cavity	0.7	0.7	0.5	0.5	0.3	0.7	0.7	0.5	0.5	0.3
walls	0.5	0.3	0.5	0.3	0.3	0.5	0.3	0.5	0.3	0.3
working plane	0.2	0.2	0.2	0.2	0.2	0.2	0.2	0.2	0.2	0.2
Room dimensions	Viewed crosswise					Viewed endwise				
x = 2H y = 2H	25.1	26.6	25.4	26.8	27.0	25.1	26.6	25.4	26.8	27.0
3H	26.2	27.6	26.5	27.8	28.1	26.2	27.6	26.5	27.8	28.0
4H	26.5	27.8	26.8	28.1	28.3	26.4	27.7	26.8	28.0	28.2
6H	26.6	27.8	26.9	28.0	28.3	26.5	27.7	26.8	28.0	28.3
8H	26.5	27.7	26.9	28.0	28.3	26.5	27.6	26.8	27.9	28.2
12H	26.5	27.6	26.8	27.9	28.2	26.4	27.5	26.8	27.8	28.1
4H 2H	25.6	26.9	25.9	27.2	27.4	25.6	26.9	25.9	27.2	27.4
3H	26.9	28.0	27.2	28.3	28.6	26.8	28.0	27.2	28.3	28.6
4H	27.2	28.3	27.6	28.6	28.9	27.2	28.2	27.5	28.5	28.8
6H	27.3	28.2	27.7	28.6	29.0	27.3	28.2	27.7	28.5	28.9
8H	27.3	28.2	27.7	28.5	28.9	27.2	28.1	27.7	28.4	28.8
12H	27.3	28.0	27.7	28.4	28.8	27.2	28.0	27.6	28.4	28.8
8H 4H	27.3	28.2	27.7	28.5	28.9	27.3	28.1	27.7	28.5	28.9
6H	27.5	28.2	27.9	28.6	29.0	27.4	28.1	27.8	28.5	28.9
8H	27.5	28.1	27.9	28.5	28.9	27.4	28.0	27.9	28.4	28.9
12H	27.4	28.0	27.9	28.4	28.9	27.4	27.9	27.8	28.3	28.8
12H 4H	27.3	28.1	27.7	28.4	28.9	27.2	28.0	27.7	28.4	28.8
6H	27.4	28.1	27.9	28.5	28.9	27.4	28.0	27.8	28.4	28.9
8H	27.4	28.0	27.9	28.4	28.9	27.4	27.9	27.9	28.3	28.8
Variations with the observer position at spacings:										
S = 1.0H	+ 0.3 / - 0.3					+ 0.2 / - 0.3				
1.5H	+ 0.2 / - 0.4					+ 0.2 / - 0.4				
2.0H	+ 0.4 / - 0.4					+ 0.4 / - 0.4				

CIE Pub.117, 875.0 lm Total Lamp Luminous Flux Correct (8log(F/F0) = -0.5)

C Range: 0 - 360DEG
 C Interval: 22.5DEG
 Test Speed: HIGH
 Temperature:24.5DEG
 Operators:William
 Test Date:2017-12-16

γ Range: 0 - 180DEG
 γ Interval: 1.0DEG
 Test System:EVERFINE GO-R5000_V2 SYSTEM V2.0.352
 Humidity:65.7%
 Test Distance:26.000m [K=1.4470]
 Remarks:

Checker: DENNY

Assessor: JOE

UTILIZATION FACTORS TABLE

NAME: LED TRI-PROOF LIGHT	TYPE:BAWATY-7W-SW-40	WEIGHT:
SPEC.:7W 4000K	DIM.: L:657mm	SERIAL No.:
MFR.: DIMON TECHNOLOGY LTD	SUR.:	Shielding Angle:

REFLECTANCE										
Ceiling	0.8	0.8	0.8	0.7	0.7	0.7	0.5	0.5	0.5	0
Walls	0.7	0.5	0.3	0.7	0.5	0.3	0.7	0.5	0.3	0
Working plane	0.2	0.2	0.2	0.2	0.2	0.2	0.2	0.2	0.2	0
ROOM INDEX	UTILIZATION FACTORS(PERCENT) $k(RI) \times RCR = 5$									
k = 0.60	59	47	40	58	47	40	57	46	40	34
0.80	69	58	50	68	57	50	66	56	50	43
1.00	78	67	60	76	66	60	74	68	59	52
1.25	85	75	68	83	74	68	81	73	67	60
1.50	90	80	74	88	80	73	85	78	72	65
2.00	97	89	83	95	87	82	91	85	80	73
2.50	100	93	87	98	92	87	95	89	85	77
3.00	104	97	92	101	96	91	98	93	89	81
4.00	107	102	98	105	100	97	101	97	94	85
5.00	110	105	102	107	103	100	103	100	97	88
ROOM INDEX	UF(total)									Direct
According to DIN EN 13032-2 2004			Suspended				SHRNOM = 1.25			

C Range: 0 - 360DEG
 C Interval: 22.5DEG
 Test Speed: HIGH
 Temperature:24.5DEG
 Operators:William
 Test Date:2017-12-16

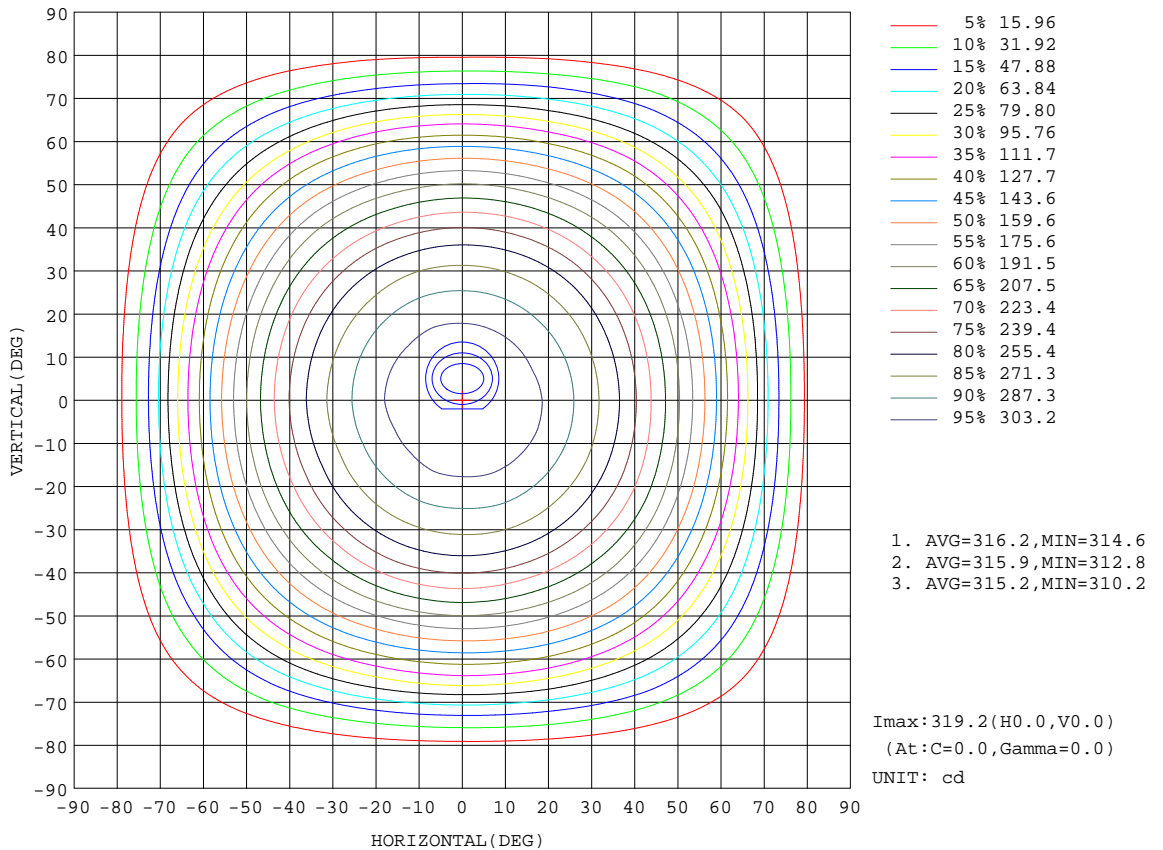
γ Range: 0 - 180DEG
 γ Interval: 1.0DEG
 Test System:EVERFINE GO-R5000_V2 SYSTEM V2.0.352
 Humidity:65.7%
 Test Distance:26.000m [K=1.4470]
 Remarks:

Checker: DENNY

Assessor: JOE

ISOCANDELA DIAGRAM

NAME: LED TRI-PROOF LIGHT	TYPE:BAWATY-7W-SW-40	WEIGHT:
SPEC.:7W 4000K	DIM.: L:657mm	SERIAL No.:
MFR.: DIMON TECHNOLOGY LTD	SUR.:	Shielding Angle:



C Range: 0 - 360DEG
 C Interval: 22.5DEG
 Test Speed: HIGH
 Temperature: 24.5DEG
 Operators: William
 Test Date: 2017-12-16

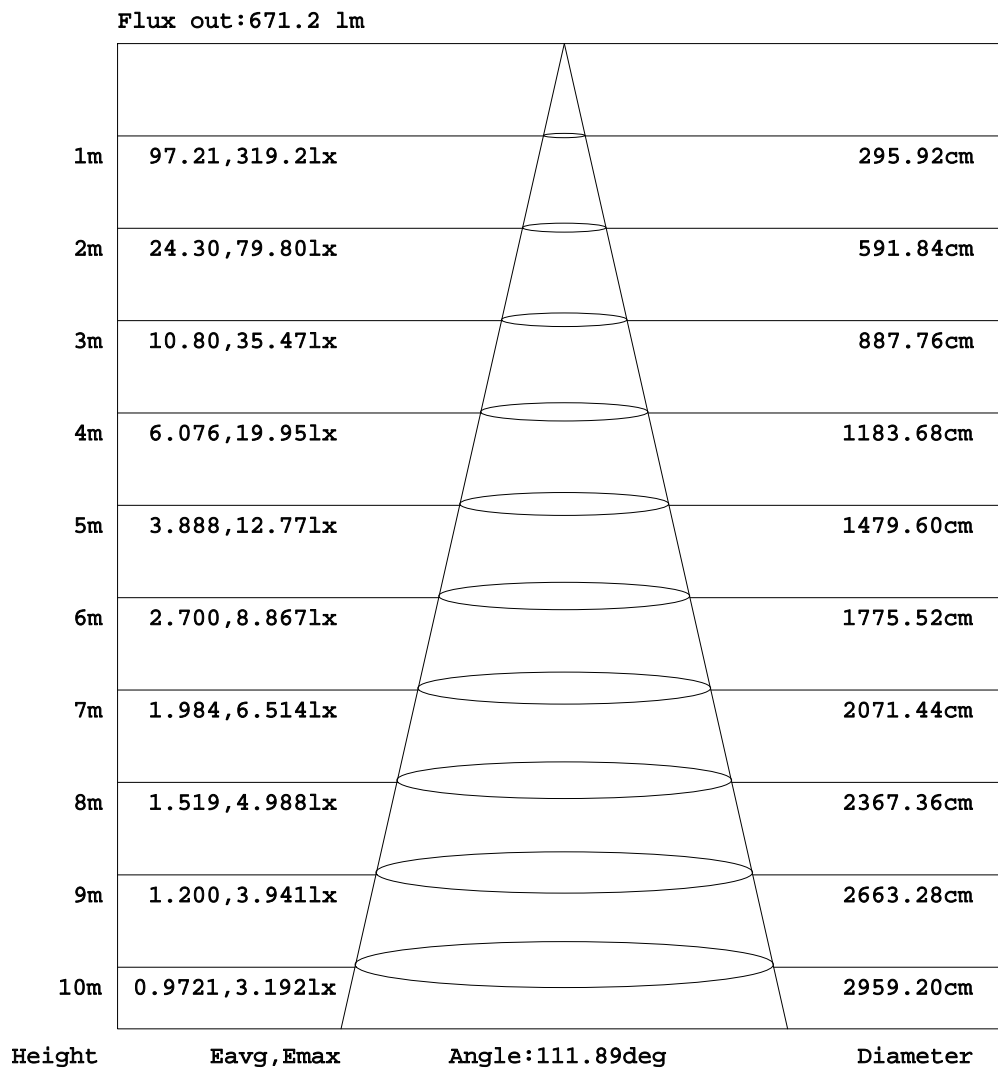
γ Range: 0 - 180DEG
 γ Interval: 1.0DEG
 Test System: EVERFINE GO-R5000_V2 SYSTEM V2.0.352
 Humidity: 65.7%
 Test Distance: 26.000m [K=1.4470]
 Remarks:

Checker: DENNY

Assessor: JOE

AAI Figure

NAME: LED TRI-PROOF LIGHT	TYPE:BAWATY-7W-SW-40	WEIGHT:
SPEC.:7W 4000K	DIM.: L:657mm	SERIAL No.:
MFR.: DIMON TECHNOLOGY LTD	SUR.:	Shielding Angle:



Note:The Curves indicate the illuminated area and the average illumination when the luminaire is at different distance.

C Range: 0 - 360DEG
 C Interval: 22.5DEG
 Test Speed: HIGH
 Temperature:24.5DEG
 Operators:William
 Test Date:2017-12-16

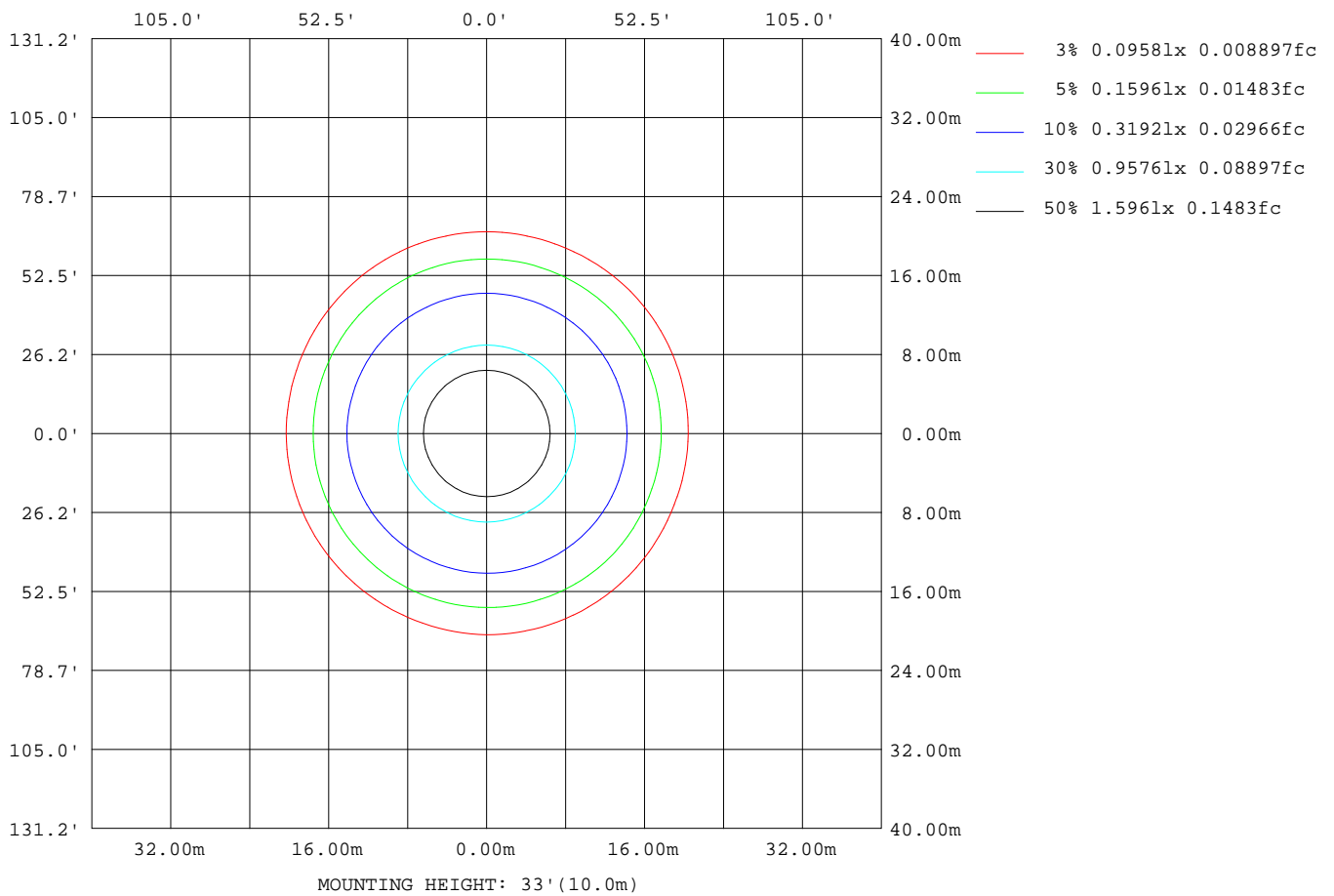
γ Range: 0 - 180DEG
 γ Interval: 1.0DEG
 Test System:EVERFINE GO-R5000_V2 SYSTEM V2.0.352
 Humidity:65.7%
 Test Distance:26.000m [K=1.4470]
 Remarks:

Checker: DENNY

Assessor: JOE

ISOLUX DIAGRAM

NAME: LED TRI-PROOF LIGHT	TYPE:BAWATY-7W-SW-40	WEIGHT:
SPEC.:7W 4000K	DIM.: L:657mm	SERIAL No.:
MFR.: DIMON TECHNOLOGY LTD	SUR.:	Shielding Angle:



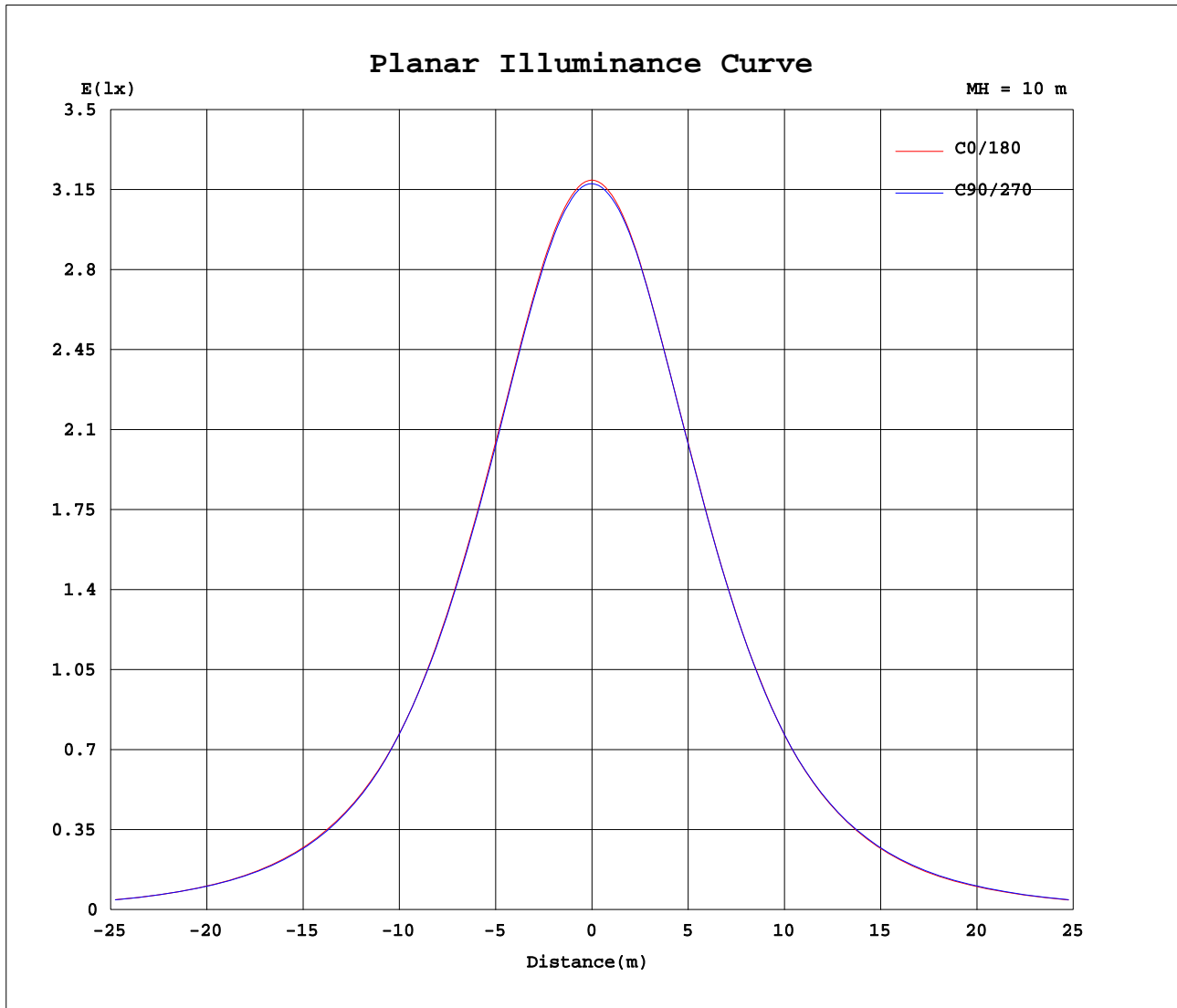
C Range: 0 - 360DEG
 C Interval: 22.5DEG
 Test Speed: HIGH
 Temperature:24.5DEG
 Operators:William
 Test Date:2017-12-16

γ Range: 0 - 180DEG
 γ Interval: 1.0DEG
 Test System:EVERFINE GO-R5000_V2 SYSTEM V2.0.352
 Humidity:65.7%
 Test Distance:26.000m [K=1.4470]
 Remarks:

Checker: DENNY

Assessor: JOE

Planar Illuminance Curve



C Range: 0 - 360DEG
 C Interval: 22.5DEG
 Test Speed: HIGH
 Temperature: 24.5DEG
 Operators: William
 Test Date: 2017-12-16

γ Range: 0 - 180DEG
 γ Interval: 1.0DEG
 Test System: EVERFINE GO-R5000_V2 SYSTEM V2.0.352
 Humidity: 65.7%
 Test Distance: 26.000m [K=1.4470]
 Remarks:

Checker: DENNY

Assessor: JOE

LUMINOUS DISTRIBUTION INTENSITY DATA

NAME: LED TRI-PROOF LIGHT	TYPE:BAWATY-7W-SW-40	WEIGHT:
SPEC.:7W 4000K	DIM.: L:657mm	SERIAL No.:
MFR.: DIMON TECHNOLOGY LTD	SUR.:	Shielding Angle:

Table--1

UNIT: cd

C(DEG) γ (DEG)	0	22.5	45	67.5	90	112.5	135	157.5	180	202.5	225	247.5	270	292.5	315	337.5			
0	319	319	318	318	318	317	317	317	319	319	318	318	318	317	317	317			
5	318	318	318	317	317	316	316	316	318	317	317	317	317	316	316	316			
10	315	315	315	314	313	313	313	313	315	314	314	314	314	313	313	313			
15	309	309	309	308	307	307	307	307	308	308	308	308	308	308	307	307			
20	301	301	300	300	299	299	298	298	299	299	299	300	299	299	299	299			
25	289	290	289	289	287	288	287	287	289	289	289	289	288	288	288	289			
30	276	276	276	276	275	274	274	274	276	275	275	276	275	275	275	276			
35	261	260	260	260	259	259	258	257	259	259	259	259	259	259	260	260			
40	241	241	240	240	240	240	238	238	240	240	239	239	240	239	240	240			
45	218	219	217	216	217	216	214	215	216	216	215	215	217	217	217	218			
50	193	194	192	191	191	190	190	190	191	191	192	191	192	192	193	193			
55	167	166	167	165	164	163	163	163	164	163	165	165	166	166	167	167			
60	137	136	138	137	135	134	134	133	134	134	136	137	137	137	139	139			
65	105	103	104	104	105	101	101	102	103	102	103	104	105	105	106	106			
70	70.0	70.1	70.0	69.4	68.0	67.7	67.3	64.8	66.9	68.1	68.5	69.7	70.1	70.9	72.7	72.9			
75	39.0	39.3	38.9	38.3	36.8	36.6	36.2	34.6	35.2	37.9	39.0	38.8	39.4	40.1	42.1	41.3			
80	13.0	13.9	13.6	13.2	13.2	12.4	12.9	11.4	12.3	13.3	14.1	14.8	13.7	15.3	15.8	15.7			
85	2.36	2.13	2.01	1.81	1.62	1.58	1.49	1.56	1.68	2.09	2.19	2.68	2.33	2.41	2.56	2.88			
90	0.06	0.05	0.03	0.03	0.03	0.04	0.03	0.03	0.02	0.25	0.02	0.02	0.10	0.01	0.27	0.10			
95	0.02	0.02	0.03	0.03	0.02	0.02	0.02	0.02	0.03	0.08	0.03	0.03	0.02	0.02	0.02	0.03			
100	0.02	0.02	0.02	0.03	0.03	0.03	0.02	0.02	0.06	0.06	0.06	0.06	0.06	0.06	0.06	0.06			
105	0.02	0.02	0.02	0.03	0.03	0.03	0.02	0.03	0.11	0.10	0.10	0.11	0.10	0.11	0.11	0.10			
110	0.01	0.03	0.02	0.03	0.03	0.04	0.03	0.03	0.17	0.15	0.16	0.17	0.17	0.17	0.16	0.16			
115	0.04	0.04	0.04	0.05	0.05	0.03	0.03	0.05	0.23	0.21	0.22	0.22	0.22	0.22	0.22	0.22			
120	0.11	0.09	0.11	0.10	0.10	0.08	0.09	0.08	0.27	0.27	0.26	0.25	0.28	0.27	0.28	0.26			
125	0.17	0.15	0.15	0.18	0.17	0.16	0.14	0.15	0.29	0.29	0.27	0.25	0.29	0.28	0.29	0.29			
130	0.24	0.22	0.22	0.25	0.24	0.22	0.19	0.22	0.33	0.30	0.29	0.27	0.30	0.29	0.31	0.31			
135	0.33	0.28	0.29	0.33	0.33	0.30	0.24	0.28	0.35	0.30	0.30	0.32	0.35	0.31	0.33	0.33			
140	0.43	0.39	0.38	0.45	0.44	0.44	0.34	0.41	0.38	0.35	0.32	0.35	0.36	0.37	0.36	0.36			
145	0.49	0.47	0.46	0.53	0.51	0.49	0.44	0.45	0.42	0.38	0.36	0.42	0.44	0.44	0.40	0.41			
150	0.54	0.55	0.55	0.56	0.55	0.56	0.51	0.49	0.47	0.44	0.43	0.49	0.50	0.50	0.50	0.47			
155	0.57	0.59	0.58	0.59	0.56	0.57	0.57	0.55	0.54	0.52	0.51	0.56	0.53	0.55	0.53	0.55			
160	0.60	0.60	0.60	0.60	0.59	0.59	0.58	0.58	0.57	0.56	0.55	0.58	0.60	0.57	0.58	0.56			
165	0.66	0.64	0.64	0.66	0.67	0.62	0.63	0.63	0.60	0.60	0.59	0.60	0.62	0.61	0.62	0.59			
170	0.68	0.67	0.69	0.71	0.72	0.69	0.67	0.68	0.64	0.64	0.64	0.67	0.66	0.68	0.69	0.64			
175	0.73	0.70	0.74	0.76	0.75	0.71	0.72	0.70	0.71	0.69	0.69	0.72	0.71	0.71	0.71	0.69			
180	0.74	0.71	0.74	0.76	0.74	0.71	0.72	0.70	0.72	0.74	0.71	0.74	0.75	0.75	0.71	0.72			

C Range: 0 - 360DEG
 C Interval: 22.5DEG
 Test Speed: HIGH
 Temperature:24.5DEG
 Operators:William
 Test Date:2017-12-16

γ Range: 0 - 180DEG
 γ Interval: 1.0DEG
 Test System:EVERFINE GO-R5000_V2 SYSTEM V2.0.352
 Humidity:65.7%
 Test Distance:26.000m [K=1.4470]
 Remarks:

Checker: DENNY

Assessor: JOE