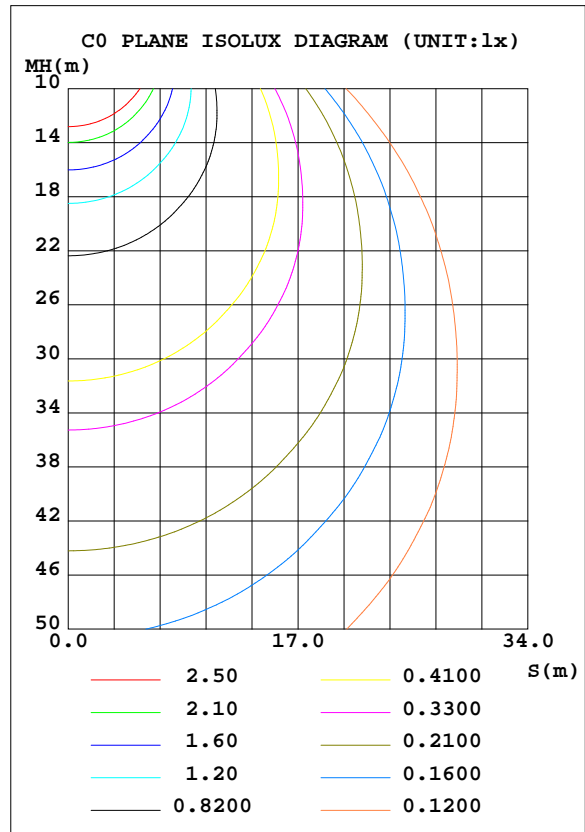
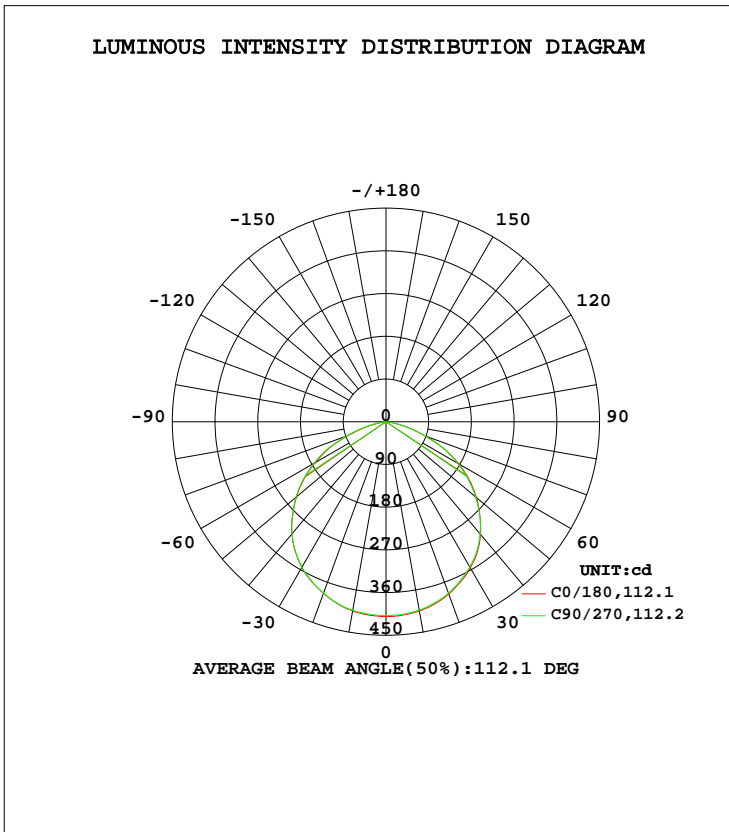


LUMINAIRE PHOTOMETRIC TEST REPORT

NAME: LED TRI-PROOF LIGHT	TYPE:BAWATY-9W-SW-40	WEIGHT:
SPEC.:9W 4000K	DIM.: L:657mm	SERIAL No.:
MFR.: DIMON TECHNOLOGY LTD	SUR.:	Shielding Angle:

DATA OF LAMP		PHOTOMETRIC DATA Eff: 125.00 lm/W			
MODEL	BAWATY-9W-SW-40	Imax(cd)	410.4	S/MH(C0/180)	1.28
NOMINAL POWER(W)	9	LOR(%)	100.0	S/MH(C90/270)	1.29
RATED VOLTAGE(V)	220	TOTAL FLUX(lm)	1125.0	η UP, DN(C0-180)	0.1,49.8
NOMINAL FLUX(lm)	1125	CIE CLASS	DIRECT	η UP, DN(C180-360)	0.1,50.0
LAMPS INSIDE	1	η up(%)	0.2	CIBSE SHR NOM	1.25
TEST VOLTAGE(V)	220	η down(%)	99.8	CIBSE SHR MAX	1.35



C Range: 0 - 360DEG
 C Interval: 22.5DEG
 Test Speed: HIGH
 Temperature:24.5DEG
 Operators:William
 Test Date:2017-12-16

γ Range: 0 - 180DEG
 γ Interval: 1.0DEG
 Test System:EVERFINE GO-R5000_V2 SYSTEM V2.0.352
 Humidity:65.7%
 Test Distance:26.000m [K=1.4470]
 Remarks:

Checker: DENNY

Assessor: JOE

ZONAL FLUX DIAGRAM

ZONAL FLUX DIAGRAM:

γ	C0	C45	C90	C135	C180	C225	C270	C315	γ	Φ zone	Φ total	%lum, lamp
10	404.8	404.6	402.9	401.8	404.7	403.2	403.4	402.5	0- 10	38.76	38.76	3.45,3.45
20	386.4	386.1	384.4	383.0	384.8	384.6	384.5	384.2	10- 20	111.8	150.5	13.4,13.4
30	355.4	354.6	353.1	352.1	354.6	353.3	354.1	353.8	20- 30	171.0	321.5	28.6,28.6
40	309.9	308.3	308.4	305.9	308.6	306.8	308.2	308.6	30- 40	208.3	529.8	47.1,47.1
50	248.8	247.5	246.1	244.0	246.2	246.5	247.5	248.2	40- 50	214.6	744.3	66.2,66.2
60	176.4	177.0	174.2	171.8	172.1	174.6	175.6	178.7	50- 60	189.4	933.7	83,83
70	89.97	90.04	87.48	86.48	85.98	88.03	90.19	93.42	60- 70	131.2	1065	94.7,94.7
80	16.73	17.47	17.02	16.61	15.78	18.14	17.58	20.27	70- 80	53.04	1118	99.4,99.4
90	0.0732	0.0388	0.0365	0.0445	0.0265	0.0264	0.1242	0.3529	80- 90	5.244	1123	99.8,99.8
100	0.0232	0.0321	0.0345	0.0299	0.0806	0.0805	0.0802	0.0713	90-100	0.0503	1123	99.8,99.8
110	0.0185	0.0272	0.0429	0.0343	0.2227	0.2048	0.2140	0.2056	100-110	0.0913	1123	99.8,99.8
120	0.1420	0.1420	0.1246	0.1151	0.3507	0.3324	0.3567	0.3657	110-120	0.1689	1123	99.9,99.9
130	0.3026	0.2849	0.3117	0.2402	0.4273	0.3680	0.3870	0.3922	120-130	0.2544	1124	99.9,99.9
140	0.5587	0.4895	0.5617	0.4365	0.4898	0.4097	0.4642	0.4633	130-140	0.3115	1124	99.9,99.9
150	0.6943	0.7033	0.7129	0.6591	0.6055	0.5521	0.6420	0.6414	140-150	0.3579	1124	99.9,99.9
160	0.7707	0.7745	0.7578	0.7482	0.7377	0.7105	0.7757	0.7394	150-160	0.3262	1125	100,100
170	0.8723	0.8901	0.9270	0.8639	0.8189	0.8196	0.8547	0.8908	160-170	0.2265	1125	100,100
180	0.9524	0.9526	0.9543	0.9265	0.9257	0.9081	0.9630	0.9175	170-180	0.0862	1125	100,100
DEG	LUMINOUS INTENSITY:cd									UNIT:lm		

Conical surface Flux(90deg): 638.37 lm

%lum = 56.7%
%lamp = 56.7%

Conical surface Flux(120deg): 933.72 lm

%lum = 83.0%
%lamp = 83.0%

C Range: 0 - 360DEG
C Interval: 22.5DEG
Test Speed: HIGH
Temperature:24.5DEG
Operators:William
Test Date:2017-12-16

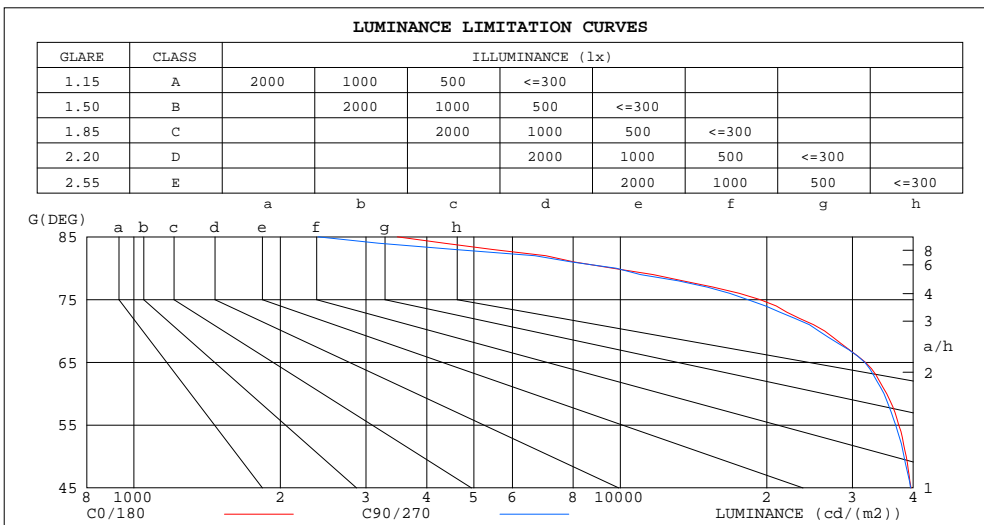
γ Range: 0 - 180DEG
γ Interval: 1.0DEG
Test System:EVERFINE GO-R5000_V2 SYSTEM V2.0.352
Humidity:65.7%
Test Distance:26.000m [K=1.4470]
Remarks:

Checker: DENNY

Assessor: JOE

LUMINANCE LIMITATION CURVES

NAME: LED TRI-PROOF LIGHT	TYPE:BAWATY-9W-SW-40	WEIGHT:
SPEC.:9W 4000K	DIM.: L:657mm	SERIAL No.:
MFR.: DIMON TECHNOLOGY LTD	SUR.:	Shielding Angle:



LUMINANCE cd/(m2)		
G(DEG)	C0/180	C90/270
85	3482	2391
80	9634	9799
75	19366	18269
70	26305	25578
65	31910	31797
60	35290	34834
55	37360	36819
50	38699	38286
45	39584	39502

C Range: 0 - 360DEG
 C Interval: 22.5DEG
 Test Speed: HIGH
 Temperature:24.5DEG
 Operators:William
 Test Date:2017-12-16

γ Range: 0 - 180DEG
 γ Interval: 1.0DEG
 Test System:EVERFINE GO-R5000_V2 SYSTEM V2.0.352
 Humidity:65.7%
 Test Distance:26.000m [K=1.4470]
 Remarks:

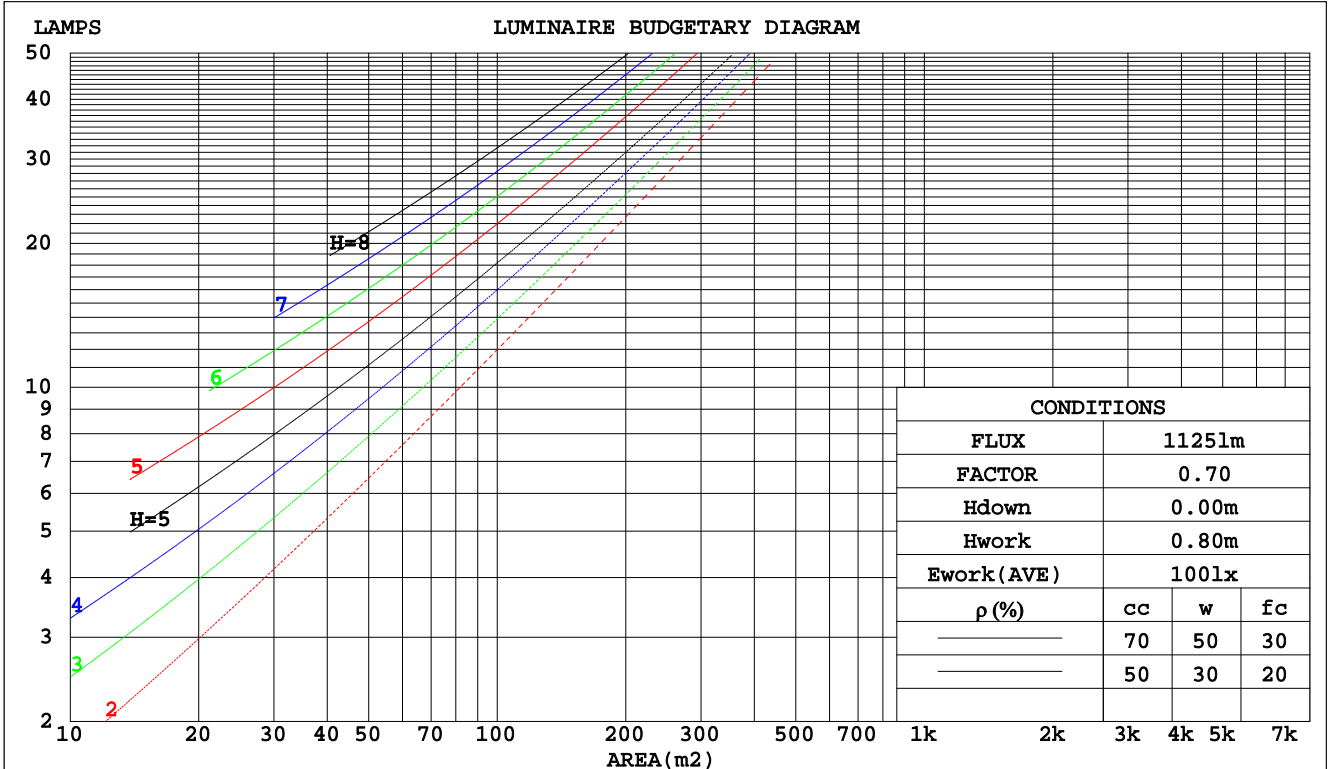
Checker: DENNY

Assessor: JOE

CU AND LUMINAIRE BUDGETARY ESTIMATE DIAGRAM

NAME: LED TRI-PROOF LIGHT	TYPE:BAWATY-9W-SW-40	WEIGHT:
SPEC.:9W 4000K	DIM.: L:657mm	SERIAL No.:
MFR.: DIMON TECHNOLOGY LTD	SUR.:	Shielding Angle:

pcc	80%			70%			50%			30%			10%			0
	50%	30%	10%	50%	30%	10%	50%	30%	10%	50%	30%	10%	50%	30%	10%	0
pw																
pfc																
RCR	RCR:Room Cavity Ratio															
	Coefficients of Utilization(CU)															
0.0	1.19	1.19	1.19	1.16	1.16	1.16	1.11	1.11	1.11	1.06	1.06	1.06	1.02	1.02	1.02	.00
1.0	1.05	1.01	.98	1.03	.99	.96	.99	.96	.93	.95	.92	.90	.91	.89	.88	.86
2.0	.92	.86	.80	.90	.84	.79	.87	.82	.78	.84	.79	.76	.81	.77	.74	.72
3.0	.81	.73	.67	.80	.72	.67	.77	.71	.65	.74	.69	.64	.71	.67	.63	.61
4.0	.72	.64	.57	.71	.63	.57	.68	.61	.56	.66	.60	.55	.64	.59	.54	.52
5.0	.64	.56	.49	.63	.55	.49	.61	.54	.48	.59	.53	.48	.57	.52	.47	.45
6.0	.58	.49	.43	.57	.49	.43	.55	.48	.42	.54	.47	.42	.52	.46	.42	.40
7.0	.53	.44	.38	.52	.44	.38	.50	.43	.37	.49	.42	.37	.47	.41	.37	.35
8.0	.48	.40	.34	.47	.39	.34	.46	.39	.33	.45	.38	.33	.44	.38	.33	.31
9.0	.44	.36	.30	.43	.36	.30	.42	.35	.30	.41	.35	.30	.40	.34	.30	.28
10.0	.41	.33	.28	.40	.33	.27	.39	.32	.27	.38	.32	.27	.37	.31	.27	.25



C Range: 0 - 360DEG
 C Interval: 22.5DEG
 Test Speed: HIGH
 Temperature:24.5DEG
 Operators:William
 Test Date:2017-12-16

γ Range: 0 - 180DEG
 γ Interval: 1.0DEG
 Test System:EVERFINE GO-R5000_V2 SYSTEM V2.0.352
 Humidity:65.7%
 Test Distance:26.000m [K=1.4470]
 Remarks:

Checker: DENNY

Assessor: JOE

WEC AND CCEC

NAME: LED TRI-PROOF LIGHT	TYPE:BAWATY-9W-SW-40	WEIGHT:
SPEC.:9W 4000K	DIM.: L:657mm	SERIAL No.:
MFR.: DIMON TECHNOLOGY LTD	SUR.:	Shielding Angle:

ρcc	80%			70%			50%			30%			10%			0
ρw	50%	30%	10%	50%	30%	10%	50%	30%	10%	50%	30%	10%	50%	30%	10%	0
ρfc	20%			20%			20%			20%			20%			0
RCR	RCR:Room Cavity Ratio						Wall Exitance Coefficients(WEC)									
0.0																
1.0	.282	.161	.051	.275	.157	.050	.262	.150	.048	.250	.144	.046	.239	.138	.045	
2.0	.274	.150	.046	.267	.147	.045	.256	.142	.044	.245	.138	.043	.235	.133	.042	
3.0	.257	.137	.041	.252	.135	.041	.242	.131	.040	.232	.127	.039	.223	.124	.038	
4.0	.240	.125	.037	.235	.123	.036	.226	.120	.036	.218	.117	.035	.210	.114	.035	
5.0	.224	.114	.033	.219	.113	.033	.211	.110	.032	.204	.107	.032	.197	.105	.032	
6.0	.208	.105	.030	.205	.103	.030	.197	.101	.029	.191	.099	.029	.184	.097	.029	
7.0	.195	.096	.027	.191	.095	.027	.185	.093	.027	.179	.092	.027	.173	.090	.026	
8.0	.182	.089	.025	.179	.088	.025	.174	.087	.025	.168	.085	.025	.163	.084	.024	
9.0	.171	.083	.023	.169	.082	.023	.163	.081	.023	.159	.079	.023	.154	.078	.023	
10.0	.161	.077	.021	.159	.077	.021	.154	.076	.021	.150	.074	.021	.146	.073	.021	

ρcc	80%			70%			50%			30%			10%			0
ρw	50%	30%	10%	50%	30%	10%	50%	30%	10%	50%	30%	10%	50%	30%	10%	0
ρfc	20%			20%			20%			20%			20%			0
RCR	RCR:Room Cavity Ratio						Ceiling Cavity Exitance Coefficients(CCEC)									
0.0	.192	.192	.192	.164	.164	.164	.112	.112	.112	.064	.064	.064	.021	.021	.021	
1.0	.180	.158	.138	.154	.135	.119	.105	.093	.082	.061	.054	.048	.019	.017	.015	
2.0	.171	.133	.101	.147	.115	.088	.100	.079	.061	.058	.046	.036	.019	.015	.012	
3.0	.163	.116	.077	.140	.100	.067	.096	.069	.047	.056	.040	.028	.018	.013	.009	
4.0	.156	.102	.061	.134	.088	.053	.092	.061	.037	.053	.036	.022	.017	.012	.007	
5.0	.149	.092	.049	.128	.079	.043	.088	.055	.030	.051	.033	.018	.016	.011	.006	
6.0	.142	.083	.041	.122	.072	.036	.084	.050	.025	.049	.030	.015	.016	.010	.005	
7.0	.135	.076	.035	.116	.066	.031	.080	.046	.022	.047	.027	.013	.015	.009	.004	
8.0	.129	.071	.030	.111	.061	.027	.077	.043	.019	.045	.025	.011	.014	.008	.004	
9.0	.123	.066	.027	.106	.057	.023	.073	.040	.017	.043	.024	.010	.014	.008	.003	
10.0	.117	.061	.024	.101	.053	.021	.070	.037	.015	.041	.022	.009	.013	.007	.003	

C Range: 0 - 360DEG
 C Interval: 22.5DEG
 Test Speed: HIGH
 Temperature:24.5DEG
 Operators:William
 Test Date:2017-12-16

γ Range: 0 - 180DEG
 γ Interval: 1.0DEG
 Test System:EVERFINE GO-R5000_V2 SYSTEM V2.0.352
 Humidity:65.7%
 Test Distance:26.000m [K=1.4470]
 Remarks:

Checker: DENNY

Assessor: JOE

UGR(Unified Glare Rating) Table

NAME: LED TRI-PROOF LIGHT		TYPE:BAWATY-9W-SW-40					WEIGHT:				
SPEC.:9W 4000K		DIM.: L:657mm					SERIAL No.:				
MFR.: DIMON TECHNOLOGY LTD		SUR.:					Shielding Angle:				
ceiling/cavity	0.7	0.7	0.5	0.5	0.3	0.7	0.7	0.5	0.5	0.3	
walls	0.5	0.3	0.5	0.3	0.3	0.5	0.3	0.5	0.3	0.3	
working plane	0.2	0.2	0.2	0.2	0.2	0.2	0.2	0.2	0.2	0.2	
Room dimensions	Viewed crosswise					Viewed endwise					
x = 2H y = 2H	25.1	26.6	25.4	26.8	27.0	25.1	26.6	25.4	26.8	27.0	
3H	26.2	27.6	26.5	27.8	28.1	26.2	27.6	26.5	27.8	28.0	
4H	26.5	27.8	26.8	28.1	28.3	26.4	27.7	26.8	28.0	28.2	
6H	26.6	27.8	26.9	28.0	28.3	26.5	27.7	26.8	28.0	28.3	
8H	26.5	27.7	26.9	28.0	28.3	26.5	27.6	26.8	27.9	28.2	
12H	26.5	27.6	26.8	27.9	28.2	26.4	27.5	26.8	27.8	28.1	
4H 2H	25.6	26.9	25.9	27.2	27.4	25.6	26.9	25.9	27.2	27.4	
3H	26.9	28.0	27.2	28.3	28.6	26.8	28.0	27.2	28.3	28.6	
4H	27.2	28.3	27.6	28.6	28.9	27.2	28.2	27.5	28.5	28.8	
6H	27.3	28.2	27.7	28.6	29.0	27.3	28.2	27.7	28.5	28.9	
8H	27.3	28.2	27.7	28.5	28.9	27.2	28.1	27.7	28.4	28.8	
12H	27.3	28.0	27.7	28.4	28.8	27.2	28.0	27.6	28.4	28.8	
8H 4H	27.3	28.2	27.7	28.5	28.9	27.3	28.1	27.7	28.5	28.9	
6H	27.5	28.2	27.9	28.6	29.0	27.4	28.1	27.8	28.5	28.9	
8H	27.5	28.1	27.9	28.5	28.9	27.4	28.0	27.9	28.4	28.9	
12H	27.4	28.0	27.9	28.4	28.9	27.4	27.9	27.8	28.3	28.8	
12H 4H	27.3	28.1	27.7	28.4	28.9	27.2	28.0	27.7	28.4	28.8	
6H	27.4	28.1	27.9	28.5	28.9	27.4	28.0	27.8	28.4	28.9	
8H	27.4	28.0	27.9	28.4	28.9	27.4	27.9	27.9	28.3	28.8	
Variations with the observer position at spacings:											
S = 1.0H	+ 0.3 / - 0.3					+ 0.2 / - 0.3					
1.5H	+ 0.2 / - 0.4					+ 0.2 / - 0.4					
2.0H	+ 0.4 / - 0.4					+ 0.4 / - 0.4					

CIE Pub.117, 1125 lm Total Lamp Luminous Flux Correct (8log(F/F0) = 0.4)

C Range: 0 - 360DEG
 C Interval: 22.5DEG
 Test Speed: HIGH
 Temperature:24.5DEG
 Operators:William
 Test Date:2017-12-16

γ Range: 0 - 180DEG
 γ Interval: 1.0DEG
 Test System:EVERFINE GO-R5000_V2 SYSTEM V2.0.352
 Humidity:65.7%
 Test Distance:26.000m [K=1.4470]
 Remarks:

Checker: DENNY

Assessor: JOE

UTILIZATION FACTORS TABLE

NAME: LED TRI-PROOF LIGHT	TYPE:BAWATY-9W-SW-40	WEIGHT:
SPEC.:9W 4000K	DIM.: L:657mm	SERIAL No.:
MFR.: DIMON TECHNOLOGY LTD	SUR.:	Shielding Angle:

REFLECTANCE										
Ceiling	0.8	0.8	0.8	0.7	0.7	0.7	0.5	0.5	0.5	0
Walls	0.7	0.5	0.3	0.7	0.5	0.3	0.7	0.5	0.3	0
Working plane	0.2	0.2	0.2	0.2	0.2	0.2	0.2	0.2	0.2	0
ROOM INDEX	UTILIZATION FACTORS(PERCENT) $k(RI) \times RCR = 5$									
k = 0.60	59	47	40	58	47	40	57	46	40	34
0.80	69	58	50	68	57	50	66	56	50	43
1.00	78	67	60	76	66	60	74	68	59	52
1.25	85	75	68	83	74	68	81	73	67	60
1.50	90	80	74	88	80	73	85	78	72	65
2.00	97	89	83	95	87	82	91	85	80	73
2.50	100	93	87	98	92	87	95	89	85	77
3.00	104	97	92	101	96	91	98	93	89	81
4.00	107	102	98	105	100	97	101	97	94	85
5.00	110	105	102	107	103	100	103	100	97	88
ROOM INDEX	UF(total)									Direct
According to DIN EN 13032-2 2004			Suspended				SHRNOM = 1.25			

C Range: 0 - 360DEG
 C Interval: 22.5DEG
 Test Speed: HIGH
 Temperature:24.5DEG
 Operators:William
 Test Date:2017-12-16

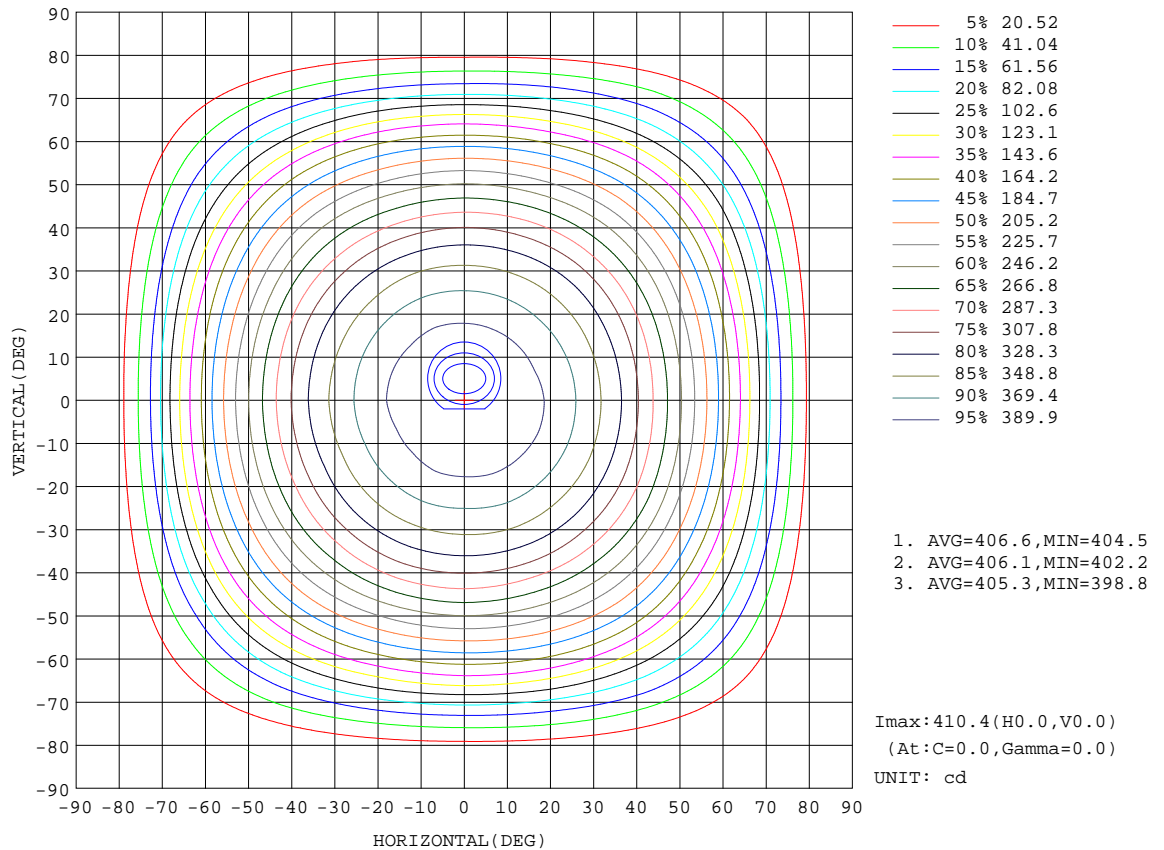
γ Range: 0 - 180DEG
 γ Interval: 1.0DEG
 Test System:EVERFINE GO-R5000_V2 SYSTEM V2.0.352
 Humidity:65.7%
 Test Distance:26.000m [K=1.4470]
 Remarks:

Checker: DENNY

Assessor: JOE

ISOCANDELA DIAGRAM

NAME: LED TRI-PROOF LIGHT	TYPE:BAWATY-9W-SW-40	WEIGHT:
SPEC.:9W 4000K	DIM.: L:657mm	SERIAL No.:
MFR.: DIMON TECHNOLOGY LTD	SUR.:	Shielding Angle:



C Range: 0 - 360DEG
 C Interval: 22.5DEG
 Test Speed: HIGH
 Temperature:24.5DEG
 Operators:William
 Test Date:2017-12-16

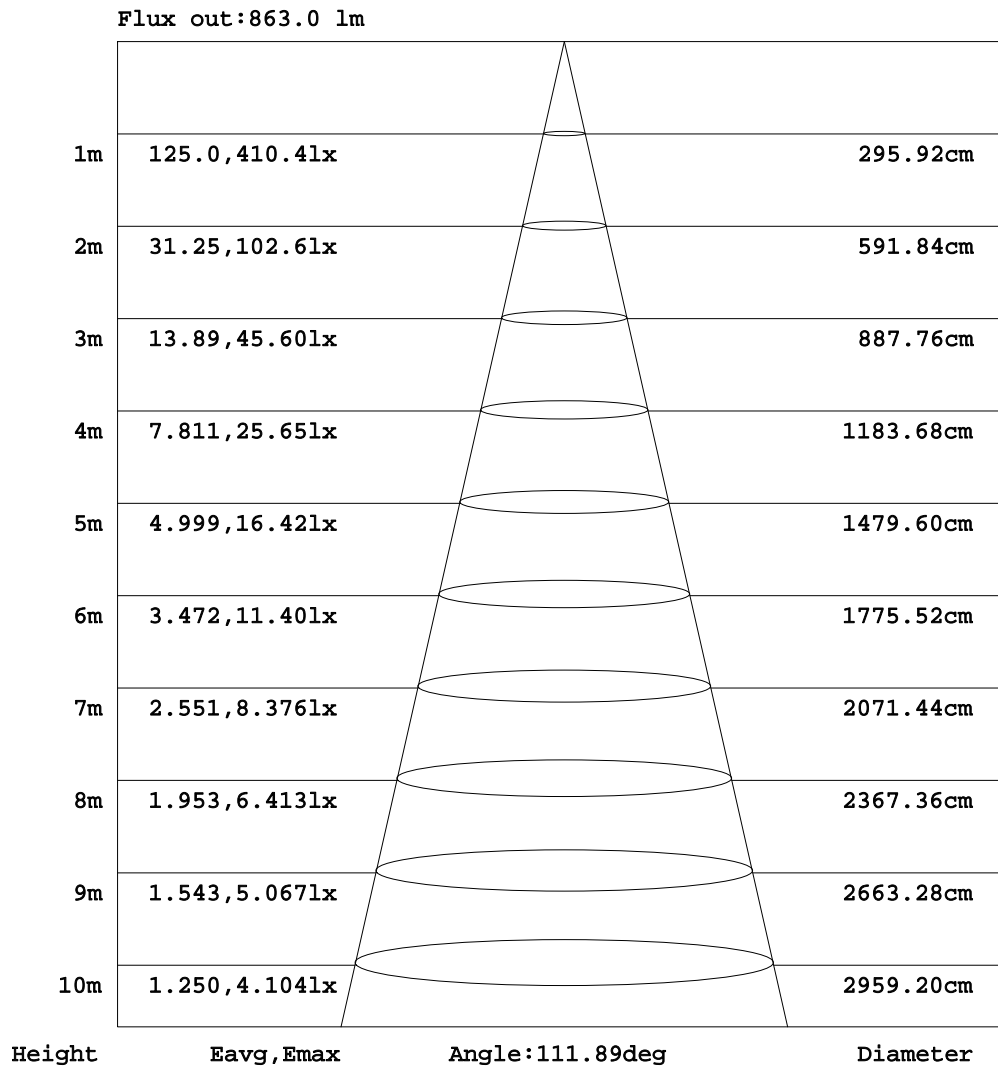
γ Range: 0 - 180DEG
 γ Interval: 1.0DEG
 Test System:EVERFINE GO-R5000_V2 SYSTEM V2.0.352
 Humidity:65.7%
 Test Distance:26.000m [K=1.4470]
 Remarks:

Checker: DENNY

Assessor: JOE

AAI Figure

NAME: LED TRI-PROOF LIGHT	TYPE:BAWATY-9W-SW-40	WEIGHT:
SPEC.:9W 4000K	DIM.: L:657mm	SERIAL No.:
MFR.: DIMON TECHNOLOGY LTD	SUR.:	Shielding Angle:



Note:The Curves indicate the illuminated area and the average illumination when the luminaire is at different distance.

C Range: 0 - 360DEG
 C Interval: 22.5DEG
 Test Speed: HIGH
 Temperature:24.5DEG
 Operators:William
 Test Date:2017-12-16

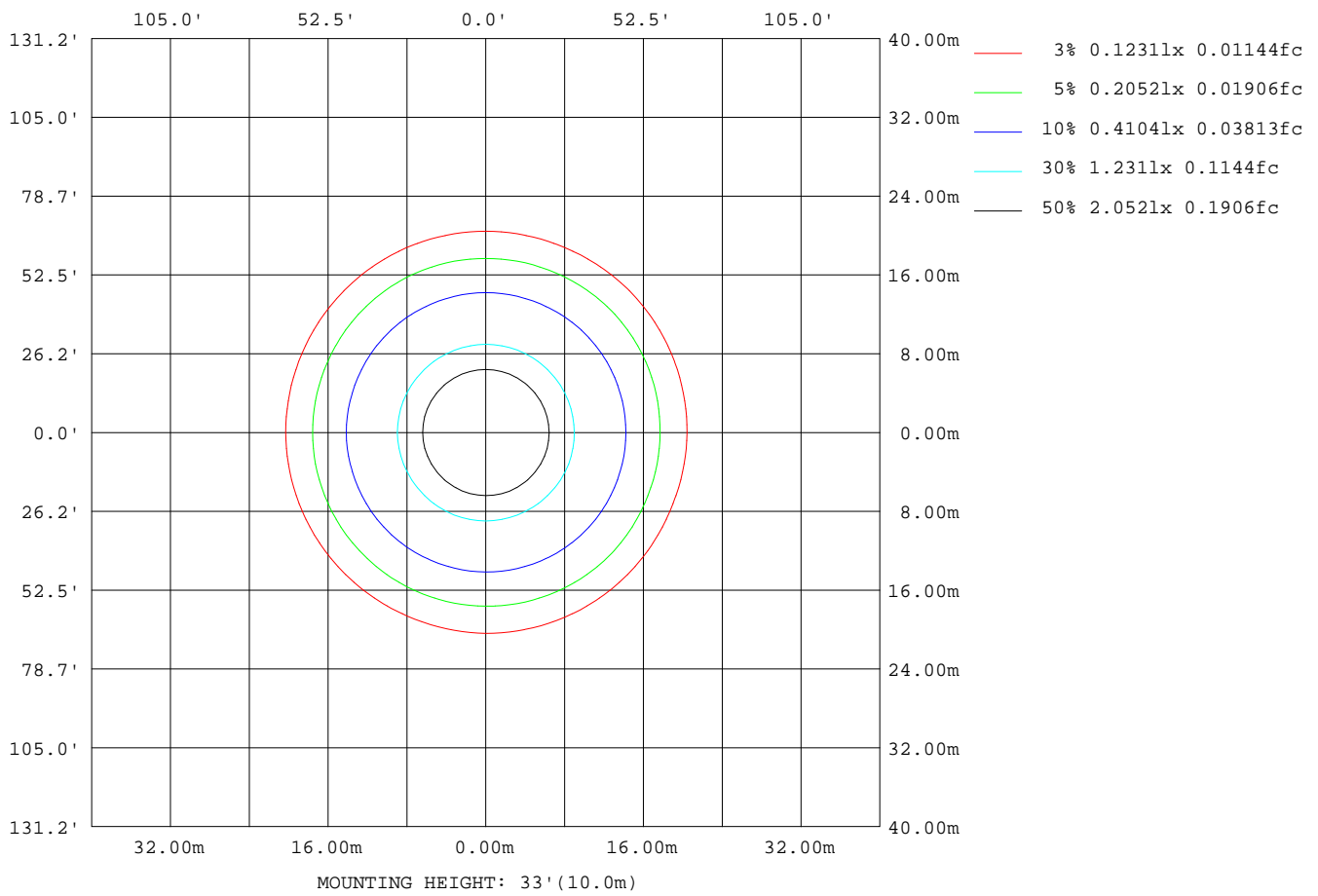
γ Range: 0 - 180DEG
 γ Interval: 1.0DEG
 Test System:EVERFINE GO-R5000_V2 SYSTEM V2.0.352
 Humidity:65.7%
 Test Distance:26.000m [K=1.4470]
 Remarks:

Checker: DENNY

Assessor: JOE

ISOLUX DIAGRAM

NAME: LED TRI-PROOF LIGHT	TYPE:BAWATY-9W-SW-40	WEIGHT:
SPEC.:9W 4000K	DIM.: L:657mm	SERIAL No.:
MFR.: DIMON TECHNOLOGY LTD	SUR.:	Shielding Angle:



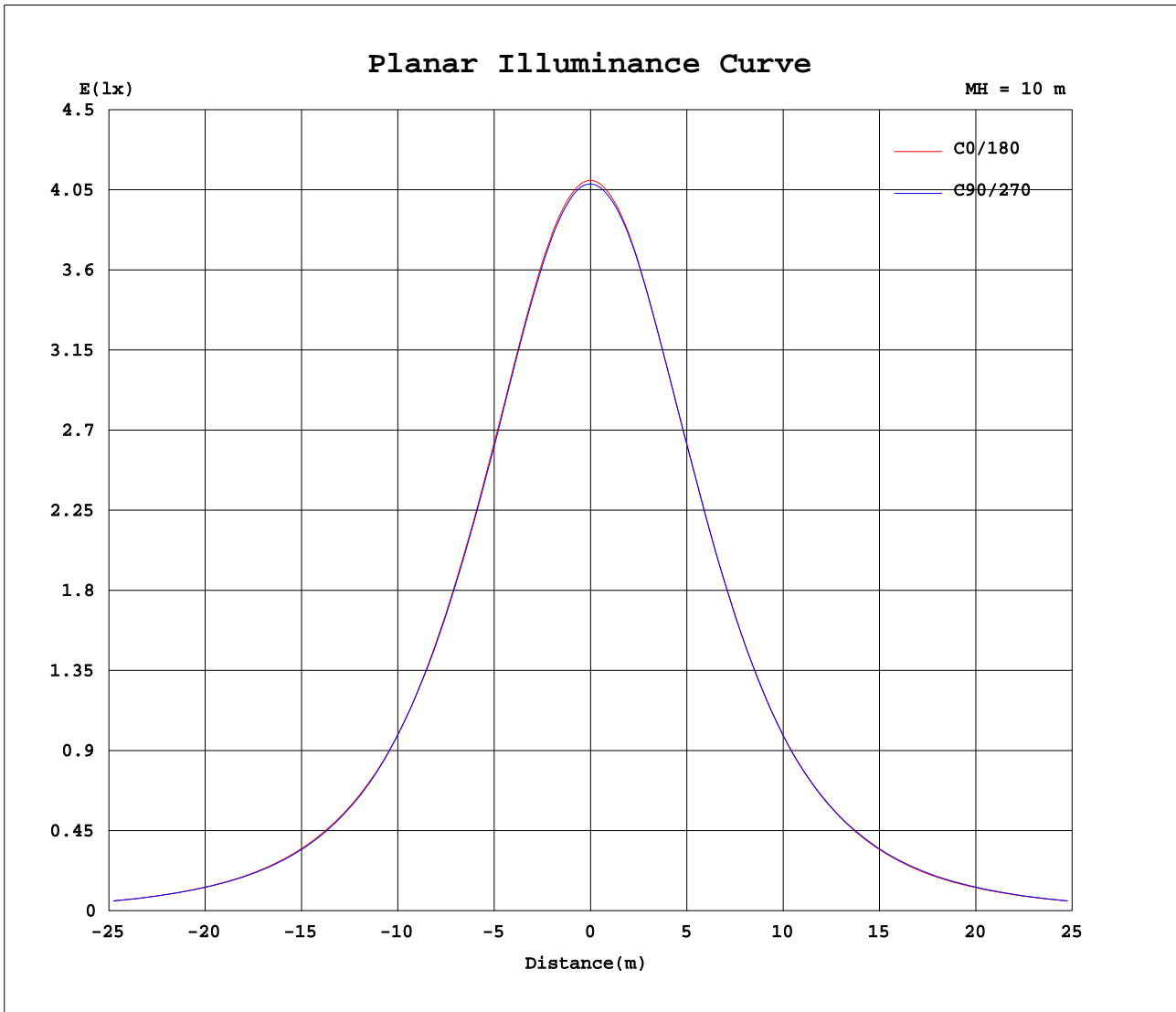
C Range: 0 - 360DEG
 C Interval: 22.5DEG
 Test Speed: HIGH
 Temperature:24.5DEG
 Operators:William
 Test Date:2017-12-16

γ Range: 0 - 180DEG
 γ Interval: 1.0DEG
 Test System:EVERFINE GO-R5000_V2 SYSTEM V2.0.352
 Humidity:65.7%
 Test Distance:26.000m [K=1.4470]
 Remarks:

Checker: DENNY

Assessor: JOE

Planar Illuminance Curve



C Range: 0 - 360DEG
 C Interval: 22.5DEG
 Test Speed: HIGH
 Temperature: 24.5DEG
 Operators: William
 Test Date: 2017-12-16

γ Range: 0 - 180DEG
 γ Interval: 1.0DEG
 Test System: EVERFINE GO-R5000_V2 SYSTEM V2.0.352
 Humidity: 65.7%
 Test Distance: 26.000m [K=1.4470]
 Remarks:

Checker: DENNY

Assessor: JOE

LUMINOUS DISTRIBUTION INTENSITY DATA

NAME: LED TRI-PROOF LIGHT	TYPE:BAWATY-9W-SW-40	WEIGHT:
SPEC.:9W 4000K	DIM.: L:657mm	SERIAL No.:
MFR.: DIMON TECHNOLOGY LTD	SUR.:	Shielding Angle:

Table--1

UNIT: cd

C(DEG)\ γ (DEG)	0	22.5	45	67.5	90	112.5	135	157.5	180	202.5	225	247.5	270	292.5	315	337.5			
0	410	410	409	409	408	408	408	407	410	410	409	409	408	408	408	407			
5	409	408	408	408	407	407	406	406	409	408	408	407	407	407	406	406			
10	405	405	405	404	403	403	402	402	405	404	403	404	403	403	403	402			
15	397	397	397	396	395	395	394	395	397	396	396	397	396	395	395	395			
20	386	387	386	386	384	385	383	383	385	385	385	385	385	384	384	385			
25	372	372	372	371	370	370	369	369	371	371	371	371	371	370	370	371			
30	355	355	355	355	353	353	352	352	355	354	353	354	354	354	354	354			
35	335	335	334	334	333	333	332	331	333	333	333	333	333	333	334	334			
40	310	310	308	308	308	308	306	306	309	308	307	307	308	308	309	309			
45	280	281	279	278	279	278	276	276	278	278	277	277	279	279	279	280			
50	249	249	247	246	246	244	244	245	246	245	246	246	247	247	248	249			
55	214	214	214	213	211	210	210	209	211	210	212	212	214	213	215	215			
60	176	175	177	176	174	173	172	171	172	172	175	176	176	176	179	178			
65	135	133	133	134	134	130	130	131	132	132	132	134	135	135	137	137			
70	90.0	90.1	90.0	89.2	87.5	87.1	86.5	83.3	86.0	87.6	88.0	89.6	90.2	91.1	93.4	93.7			
75	50.1	50.5	50.1	49.3	47.3	47.1	46.6	44.4	45.2	48.7	50.2	49.8	50.6	51.6	54.2	53.0			
80	16.7	17.9	17.5	16.9	17.0	16.0	16.6	14.6	15.8	17.1	18.1	19.0	17.6	19.7	20.3	20.1			
85	3.03	2.74	2.59	2.33	2.08	2.03	1.92	2.01	2.16	2.68	2.81	3.45	2.99	3.10	3.29	3.71			
90	0.07	0.06	0.04	0.04	0.04	0.05	0.04	0.04	0.03	0.33	0.03	0.03	0.12	0.01	0.35	0.13			
95	0.03	0.03	0.03	0.04	0.03	0.03	0.03	0.03	0.04	0.10	0.03	0.04	0.03	0.03	0.03	0.04			
100	0.02	0.03	0.03	0.04	0.03	0.04	0.03	0.03	0.08	0.08	0.08	0.08	0.08	0.07	0.07	0.07			
105	0.02	0.03	0.03	0.04	0.04	0.04	0.03	0.03	0.14	0.13	0.13	0.14	0.13	0.14	0.14	0.13			
110	0.02	0.03	0.03	0.04	0.04	0.05	0.03	0.03	0.22	0.20	0.20	0.21	0.21	0.21	0.21	0.21			
115	0.05	0.06	0.05	0.06	0.06	0.04	0.04	0.06	0.29	0.28	0.28	0.29	0.29	0.29	0.29	0.29			
120	0.14	0.12	0.14	0.13	0.12	0.10	0.12	0.11	0.35	0.35	0.33	0.32	0.36	0.35	0.37	0.34			
125	0.21	0.20	0.19	0.23	0.22	0.20	0.18	0.19	0.37	0.37	0.34	0.32	0.37	0.36	0.38	0.38			
130	0.30	0.28	0.28	0.32	0.31	0.29	0.24	0.29	0.43	0.38	0.37	0.35	0.39	0.37	0.39	0.39			
135	0.43	0.37	0.37	0.43	0.42	0.38	0.30	0.36	0.45	0.39	0.38	0.41	0.45	0.40	0.42	0.43			
140	0.56	0.51	0.49	0.58	0.56	0.56	0.44	0.53	0.49	0.45	0.41	0.45	0.46	0.47	0.46	0.46			
145	0.63	0.61	0.59	0.68	0.65	0.63	0.57	0.58	0.53	0.49	0.46	0.54	0.56	0.56	0.52	0.53			
150	0.69	0.70	0.70	0.72	0.71	0.72	0.66	0.63	0.61	0.57	0.55	0.63	0.64	0.64	0.64	0.61			
155	0.74	0.76	0.75	0.76	0.72	0.73	0.73	0.71	0.69	0.67	0.66	0.71	0.69	0.70	0.68	0.71			
160	0.77	0.77	0.77	0.77	0.76	0.76	0.75	0.74	0.74	0.72	0.71	0.75	0.78	0.73	0.74	0.72			
165	0.85	0.83	0.83	0.85	0.86	0.80	0.81	0.81	0.77	0.78	0.76	0.78	0.80	0.79	0.80	0.76			
170	0.87	0.87	0.89	0.92	0.93	0.88	0.86	0.87	0.82	0.83	0.82	0.86	0.85	0.87	0.89	0.83			
175	0.93	0.90	0.95	0.97	0.97	0.92	0.93	0.90	0.91	0.89	0.89	0.93	0.92	0.92	0.92	0.89			
180	0.95	0.91	0.95	0.98	0.95	0.92	0.93	0.90	0.93	0.95	0.91	0.95	0.96	0.96	0.92	0.93			

C Range: 0 - 360DEG
 C Interval: 22.5DEG
 Test Speed: HIGH
 Temperature:24.5DEG
 Operators:William
 Test Date:2017-12-16

γ Range: 0 - 180DEG
 γ Interval: 1.0DEG
 Test System:EVERFINE GO-R5000_V2 SYSTEM V2.0.352
 Humidity:65.7%
 Test Distance:26.000m [K=1.4470]
 Remarks:

Checker: DENNY

Assessor: JOE