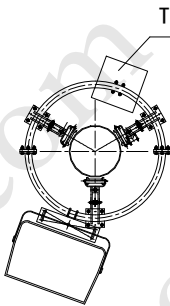


NOTES

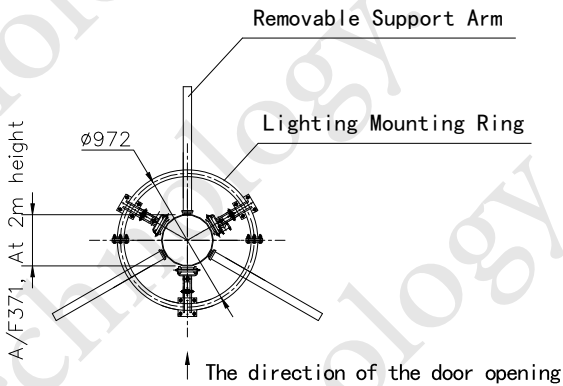
GENERAL NOTES.

- 1. FIRST ANGLE PROJECTION.
- 2. DIMENSIONS SHOWN IN BRACKETS THUS (25) ARE REF. DIMENSIONS ONLY.
- 3. REMOVE ALL BURRS AND SHARP EDGES.
- 4. DO NOT SCALE IF IN DOUBT ASK.
- 5. WELDING SYMBOLS ARE TO BS 499 AND BS 5135
- 6. FILLET WELDS TO BE TO WELD PROCEDURE No. 031W.
- 7. FOR CALCULATIONS SEE CALCULATION No.
- 8. MAST PLATE FROM MILD STEEL TO S355
- 9. HOT DIP GALVANISED TO BS 729
- 10.HIGH MAST CALCULATION ACCORDING to I.L.E. Technical Report No.7 DESIGN WIND SPEED 72M/S (GUST)

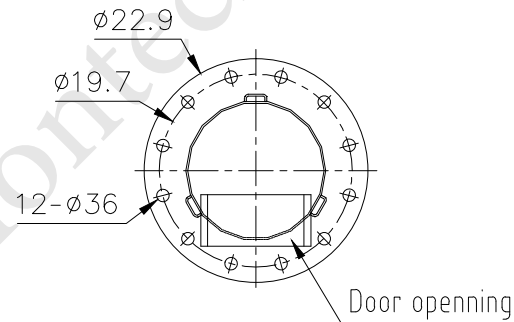


The direction of the door opening

The Arrangement of Lantern Ring



The location of the Support Arm



Detail of base flange S355

DIMON
TECHNOLOGY

Tel:00852-39165876
Fax:00852-21203398
Http://www.dimontechnology.com
E-mail:gary@dimontechnology.com

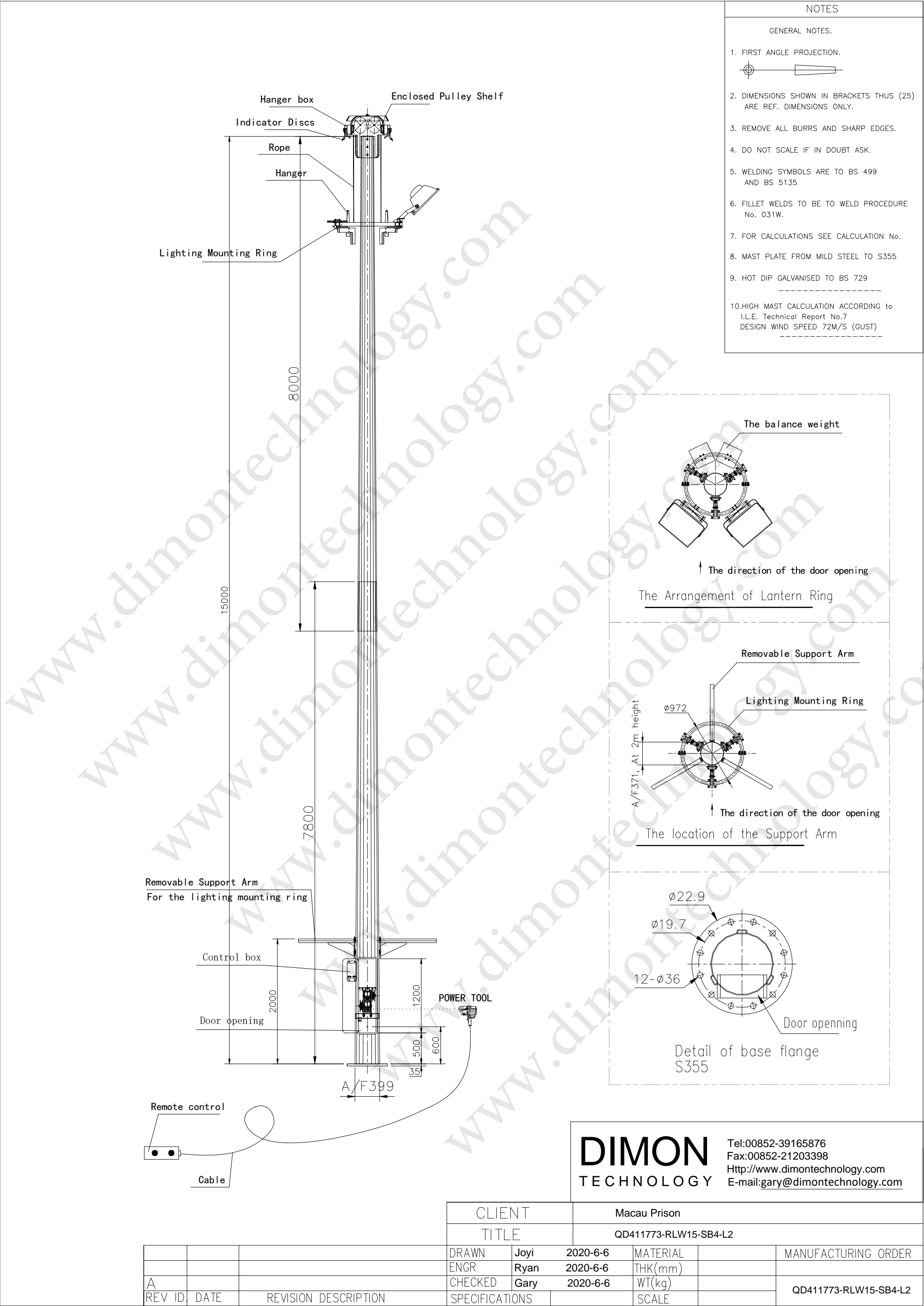
CLIENT

Macau Prison

TITLE

QD411773-RLW15-SB4-L1

			DRAWN	Joyi	2020-6-6	MATERIAL		MANUFACTURING ORDER
			ENGR	Ryan	2020-6-6	THK(mm)		
A			CHECKED	Gary	2020-6-6	WT(kg)		
REV ID	DATE	REVISION DESCRIPTION	SPECIFICATIONS			SCALE		QD411773-RLW15-SB4-L1



NOTES

GENERAL NOTES.

1. FIRST ANGLE PROJECTION.
2. DIMENSIONS SHOWN IN BRACKETS THUS (25) ARE REF. DIMENSIONS ONLY.
3. REMOVE ALL BURRS AND SHARP EDGES.
4. DO NOT SCALE IF IN DOUBT ASK.
5. WELDING SYMBOLS ARE TO BS 499 AND BS 5135
6. FILLET WELDS TO BE TO WELD PROCEDURE No. 031W.
7. FOR CALCULATIONS SEE CALCULATION No.
8. MAST PLATE FROM MILD STEEL TO S355
9. HOT DIP GALVANISED TO BS 729
- 10.HIGH MAST CALCULATION ACCORDING to I.L.E. Technical Report No.7 DESIGN WIND SPEED 72M/S (GUST)

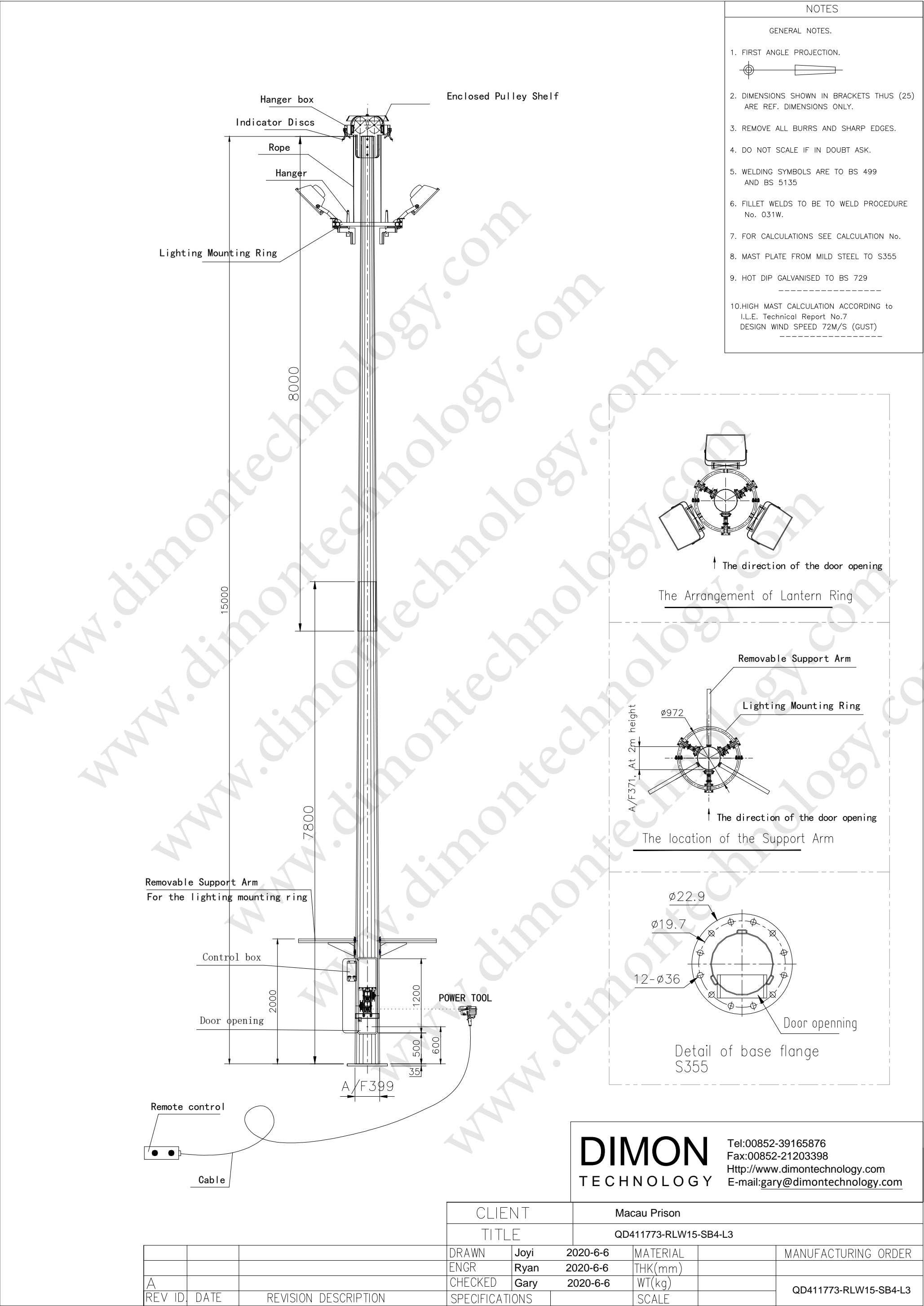
DIMON
TECHNOLOGY

Tel:00852-39165876
Fax:00852-21203398
Http://www.dimontechnology.com
E-mail:gary@dimontechnology.com

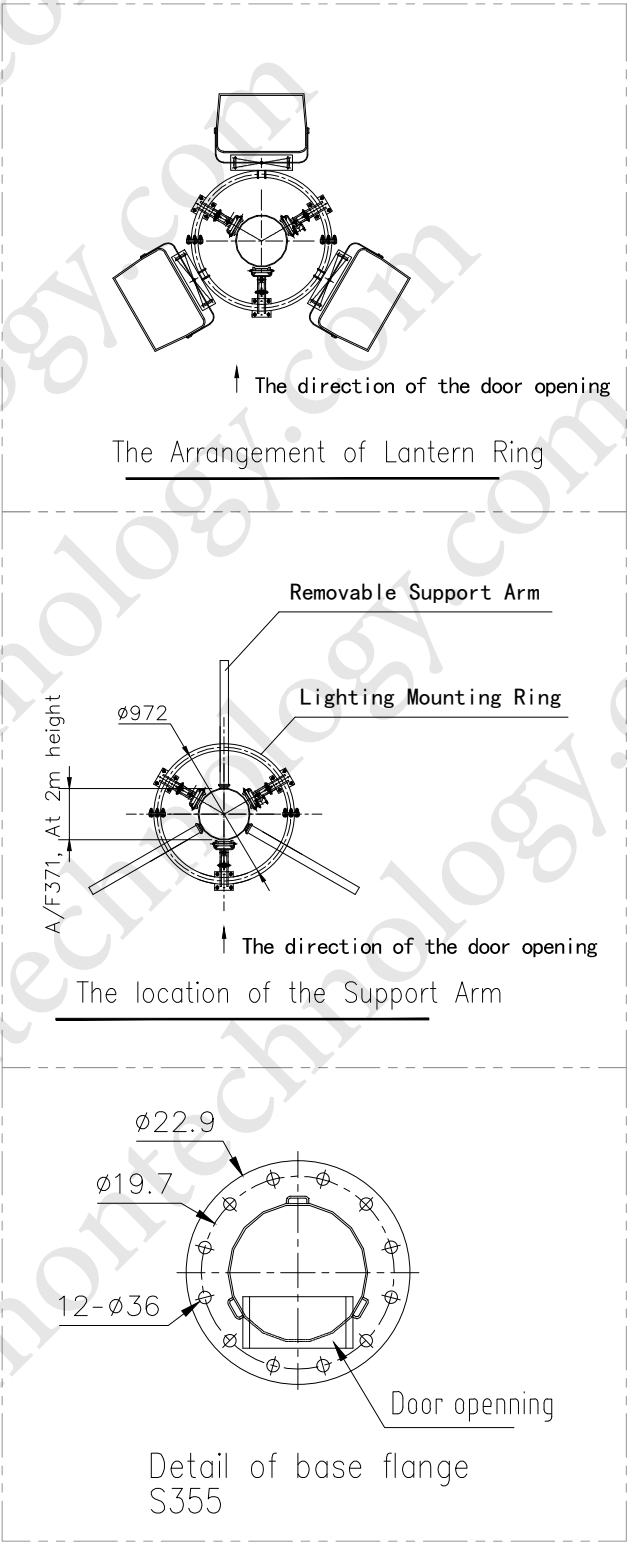
CLIENT
TITLE

Macau Prison
QD411773-RLW15-SB4-L2

			DRAWN	Joyi	2020-6-6	MATERIAL		MANUFACTURING ORDER
			ENGR	Ryan	2020-6-6	THK(mm)		
A			CHECKED	Gary	2020-6-6	WT(kg)		
REV ID	DATE	REVISION DESCRIPTION	SPECIFICATIONS			SCALE		QD411773-RLW15-SB4-L2



- NOTES
- GENERAL NOTES.
1. FIRST ANGLE PROJECTION.
2. DIMENSIONS SHOWN IN BRACKETS THUS (25) ARE REF. DIMENSIONS ONLY.
3. REMOVE ALL BURRS AND SHARP EDGES.
4. DO NOT SCALE IF IN DOUBT ASK.
5. WELDING SYMBOLS ARE TO BS 499 AND BS 5135
6. FILLET WELDS TO BE TO WELD PROCEDURE No. 031W.
7. FOR CALCULATIONS SEE CALCULATION No.
8. MAST PLATE FROM MILD STEEL TO S355
9. HOT DIP GALVANISED TO BS 729
- 10.HIGH MAST CALCULATION ACCORDING to I.L.E. Technical Report No.7 DESIGN WIND SPEED 72M/S (GUST)



DIMON

TECHNOLOGY

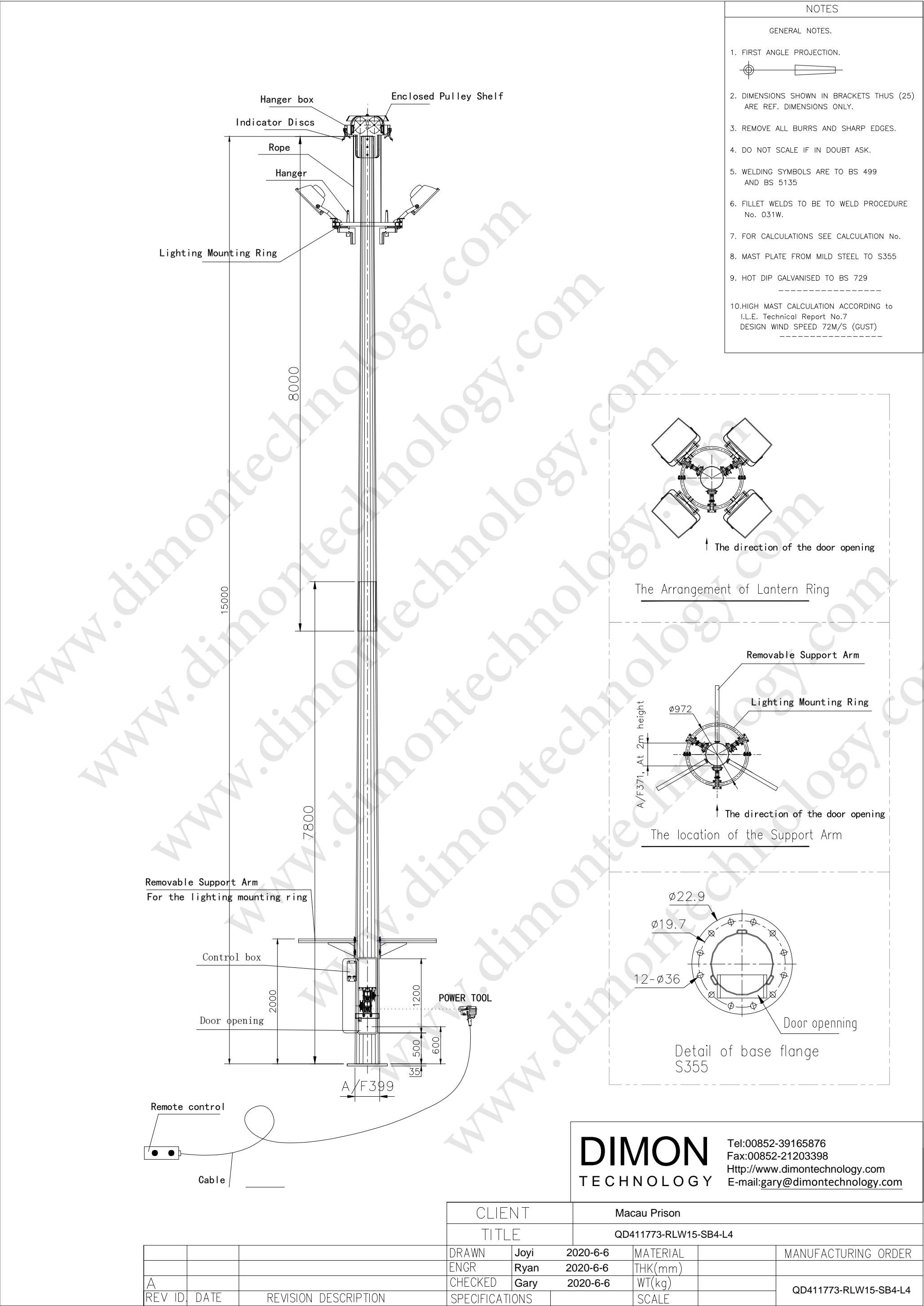
Tel:00852-39165876

Fax:00852-21203398

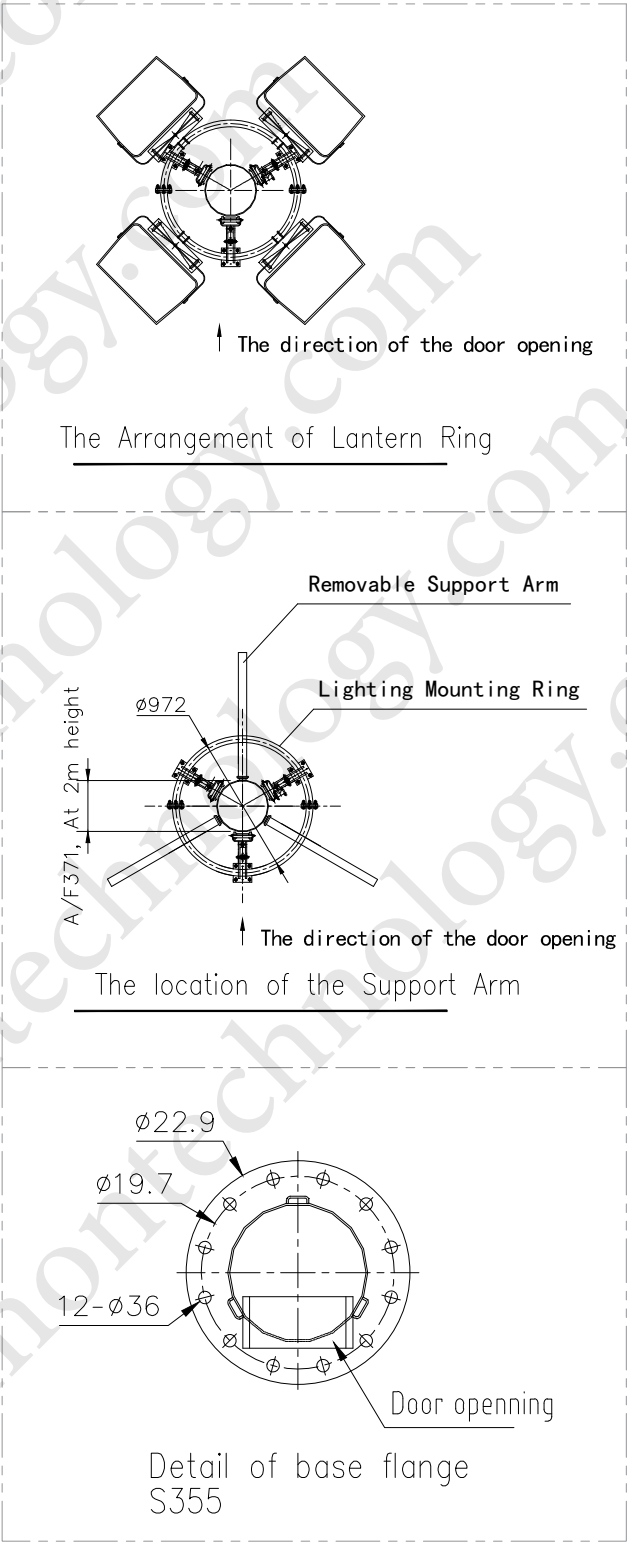
Http://www.dimontechnology.com

E-mail:gary@dimontechnology.com

CLIENT		Macau Prison				
TITLE		QD411773-RLW15-SB4-L3				
DRAWN	Joyi	2020-6-6	MATERIAL		MANUFACTURING ORDER	
ENGR	Ryan	2020-6-6	THK(mm)			
CHECKED	Gary	2020-6-6	WT(kg)			
SPECIFICATIONS			SCALE		QD411773-RLW15-SB4-L3	



- NOTES
- GENERAL NOTES.
1. FIRST ANGLE PROJECTION.
2. DIMENSIONS SHOWN IN BRACKETS THUS (25) ARE REF. DIMENSIONS ONLY.
3. REMOVE ALL BURRS AND SHARP EDGES.
4. DO NOT SCALE IF IN DOUBT ASK.
5. WELDING SYMBOLS ARE TO BS 499 AND BS 5135
6. FILLET WELDS TO BE TO WELD PROCEDURE No. 031W.
7. FOR CALCULATIONS SEE CALCULATION No.
8. MAST PLATE FROM MILD STEEL TO S355
9. HOT DIP GALVANISED TO BS 729
- 10.HIGH MAST CALCULATION ACCORDING to I.L.E. Technical Report No.7 DESIGN WIND SPEED 72M/S (GUST)



DIMON

TECHNOLOGY

Tel:00852-39165876

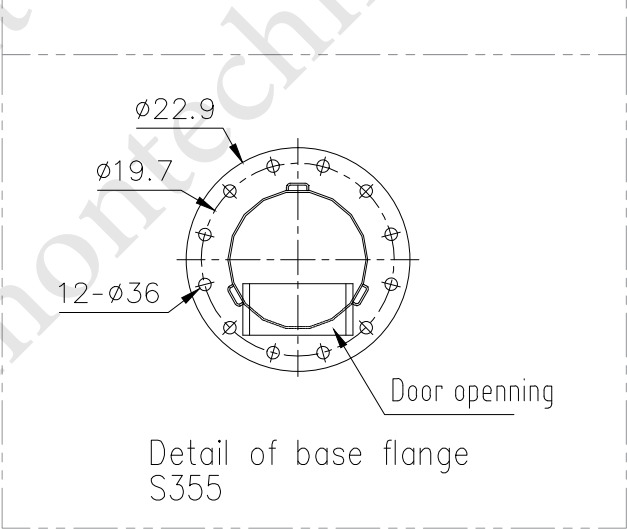
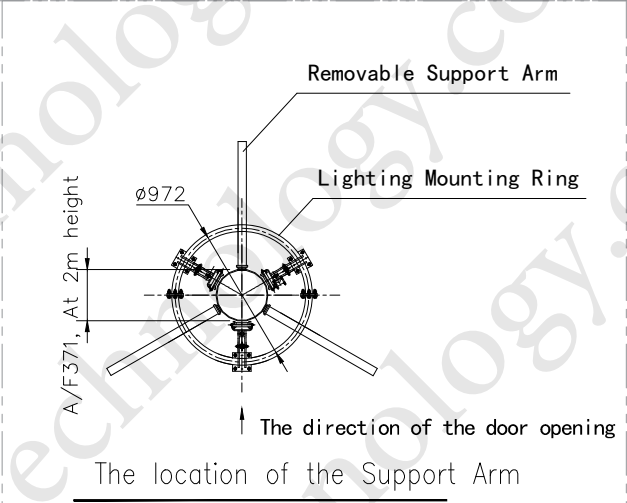
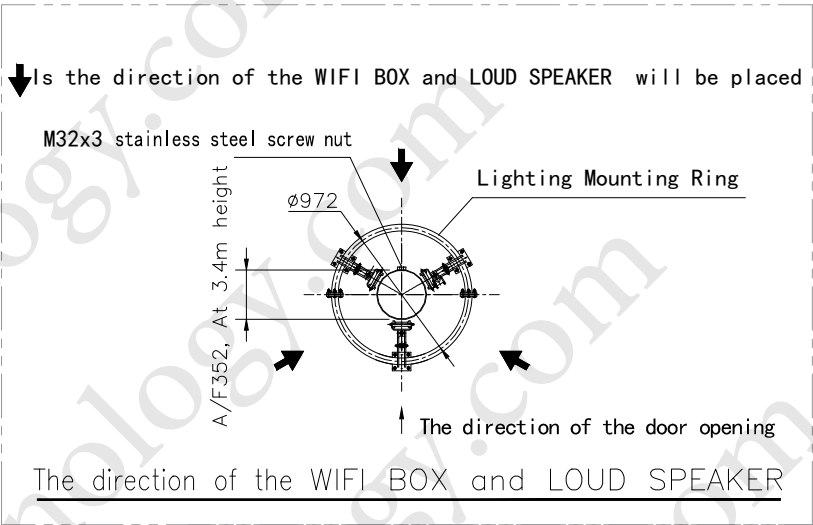
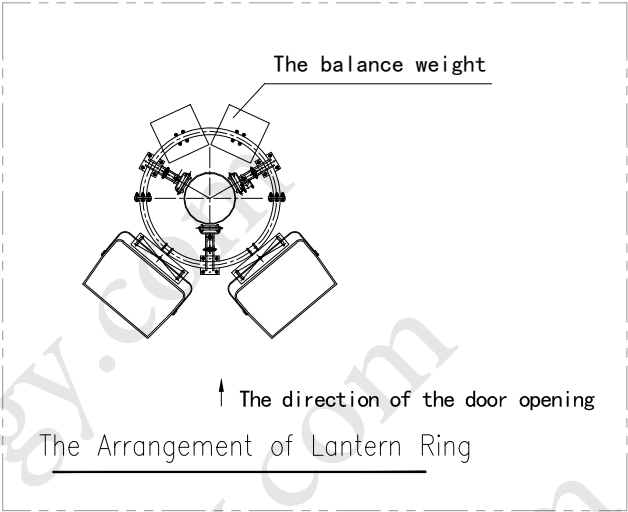
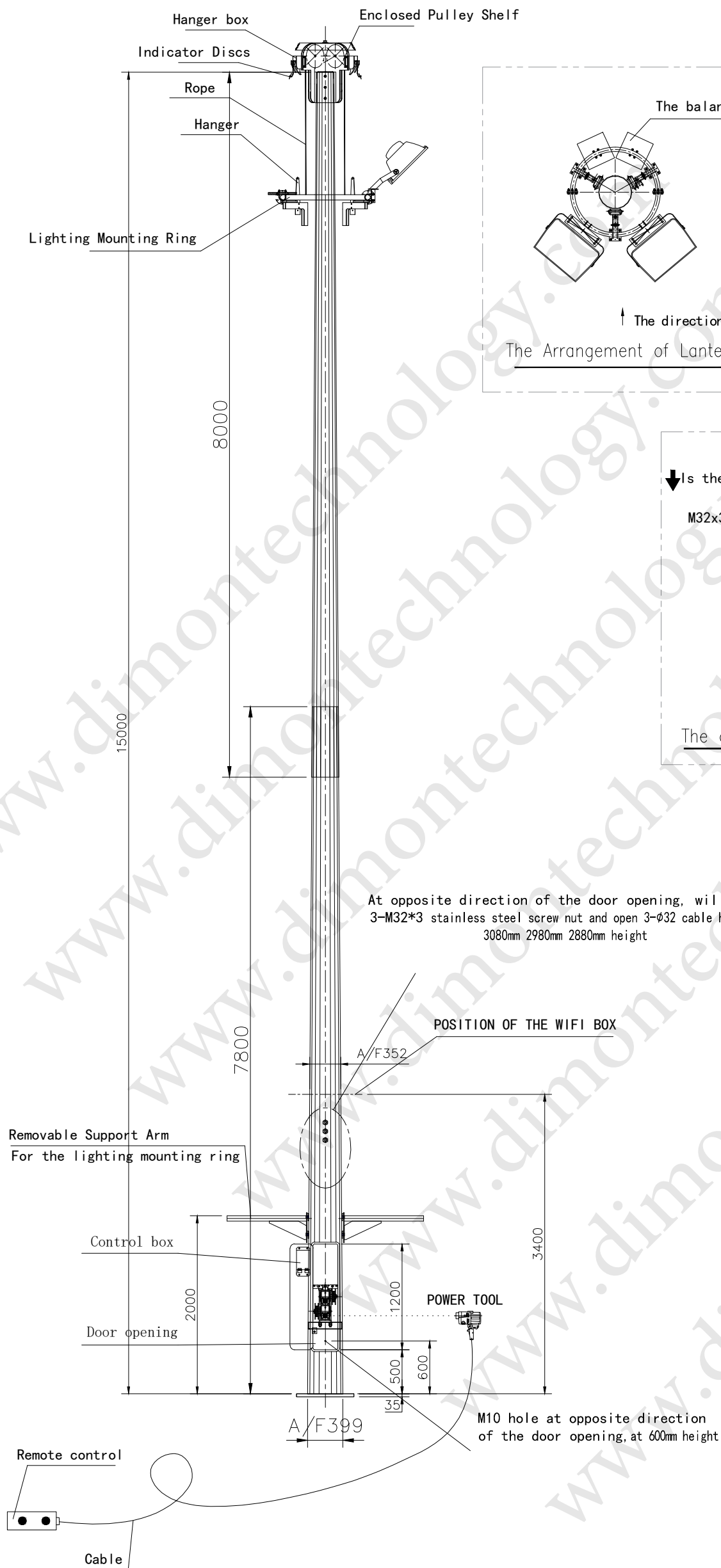
Fax:00852-21203398

Http://www.dimontechnology.com

E-mail:gary@dimontechnology.com

CLIENT		Macau Prison					
TITLE		QD411773-RLW15-SB4-L4					
		DRAWN	Joyi	2020-6-6	MATERIAL		MANUFACTURING ORDER
		ENGR	Ryan	2020-6-6	THK(mm)		
		CHECKED	Gary	2020-6-6	WT(kg)		
		SPECIFICATIONS			SCALE		

A							
REV ID	DATE	REVISION DESCRIPTION					QD411773-RLW15-SB4-L4



NOTES

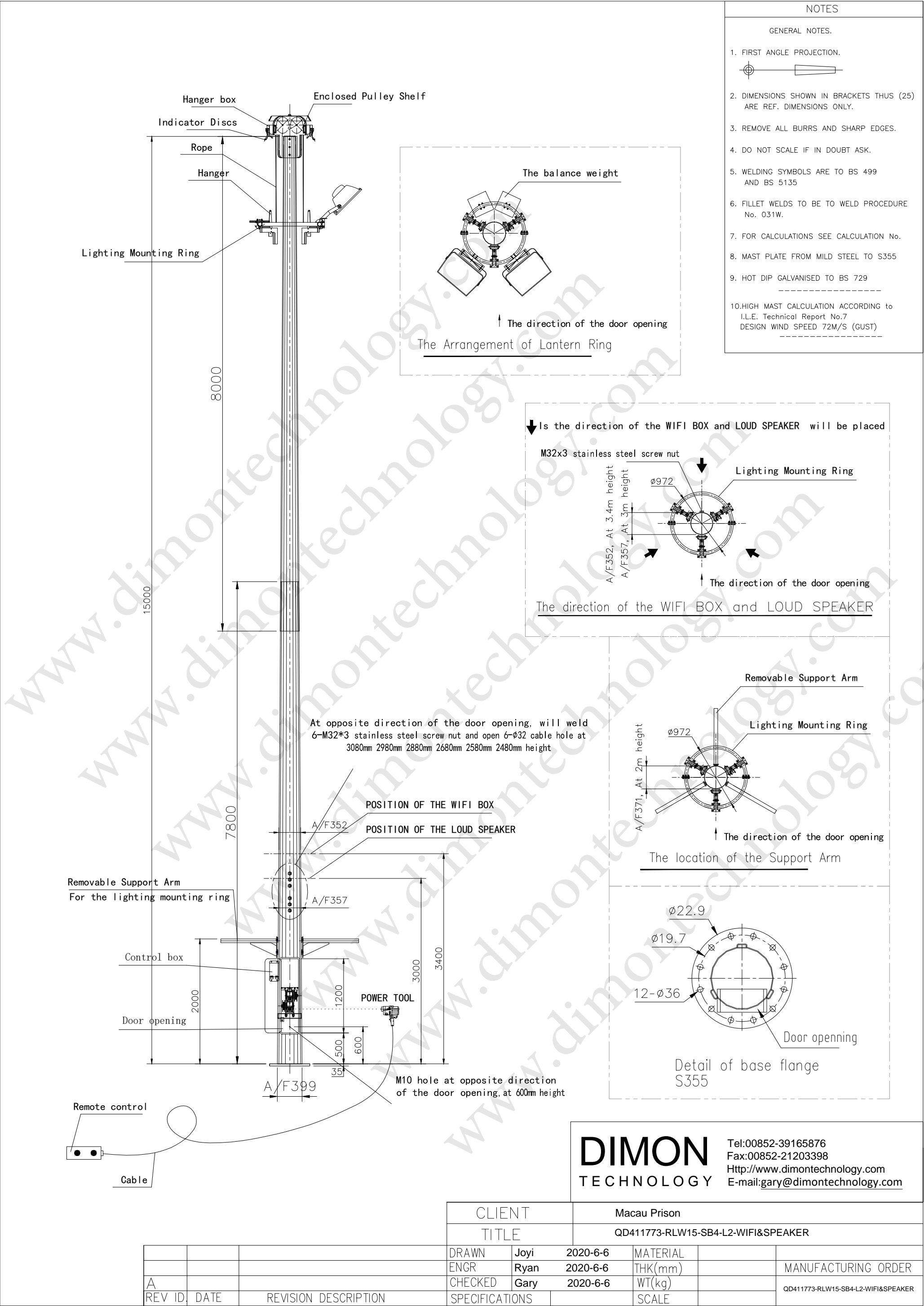
GENERAL NOTES.

1. FIRST ANGLE PROJECTION.
2. DIMENSIONS SHOWN IN BRACKETS THUS (25) ARE REF. DIMENSIONS ONLY.
3. REMOVE ALL BURRS AND SHARP EDGES.
4. DO NOT SCALE IF IN DOUBT ASK.
5. WELDING SYMBOLS ARE TO BS 499 AND BS 5135
6. FILLET WELDS TO BE TO WELD PROCEDURE No. 031W.
7. FOR CALCULATIONS SEE CALCULATION No.
8. MAST PLATE FROM MILD STEEL TO S355
9. HOT DIP GALVANISED TO BS 729
10. HIGH MAST CALCULATION ACCORDING to I.L.E. Technical Report No.7 DESIGN WIND SPEED 72M/S (GUST)

DIMON
TECHNOLOGY

Tel:00852-39165876
Fax:00852-21203398
Http://www.dimontechnology.com
E-mail:gary@dimontechnology.com

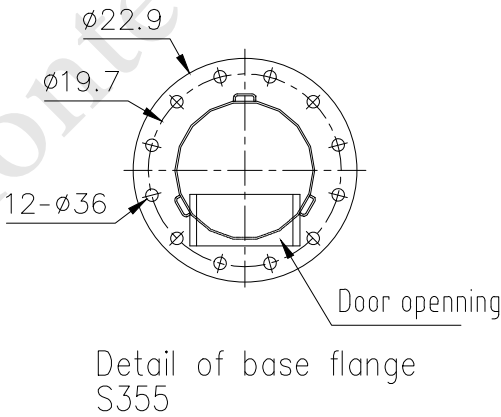
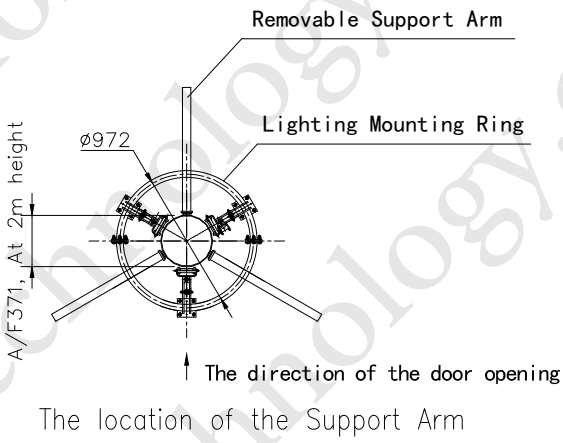
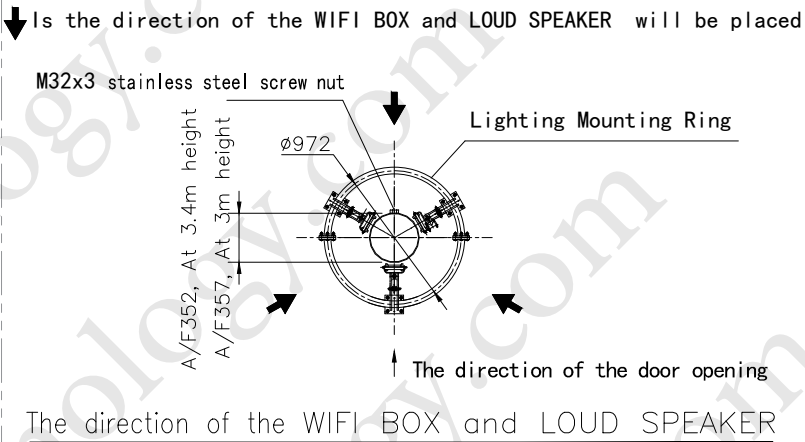
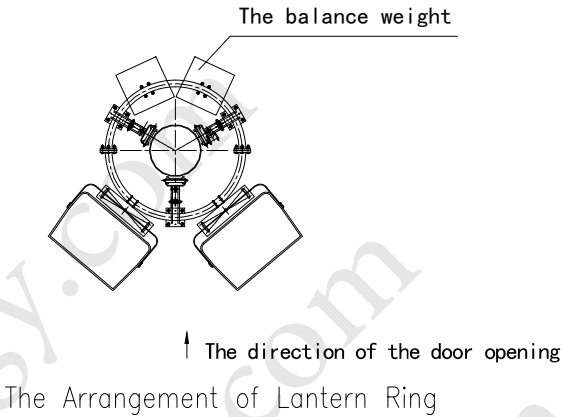
CLIENT			Macau Prison				
TITLE			QD411773-RLW15-SB4-L2-WIFI				
			DRAWN	Joyi	2020-6-6	MATERIAL	MANUFACTURING ORDER
			ENGR	Ryan	2020-6-6	THK(mm)	
A			CHECKED	Gary	2020-6-6	WT(kg)	
REV ID	DATE	REVISION DESCRIPTION	SPECIFICATIONS			SCALE	QD411773-RLW15-SB4-WIFI



NOTES

GENERAL NOTES.

1. FIRST ANGLE PROJECTION.
2. DIMENSIONS SHOWN IN BRACKETS THUS (25) ARE REF. DIMENSIONS ONLY.
3. REMOVE ALL BURRS AND SHARP EDGES.
4. DO NOT SCALE IF IN DOUBT ASK.
5. WELDING SYMBOLS ARE TO BS 499 AND BS 5135
6. FILLET WELDS TO BE TO WELD PROCEDURE No. 031W.
7. FOR CALCULATIONS SEE CALCULATION No.
8. MAST PLATE FROM MILD STEEL TO S355
9. HOT DIP GALVANISED TO BS 729
10. HIGH MAST CALCULATION ACCORDING to I.L.E. Technical Report No.7 DESIGN WIND SPEED 72M/S (GUST)



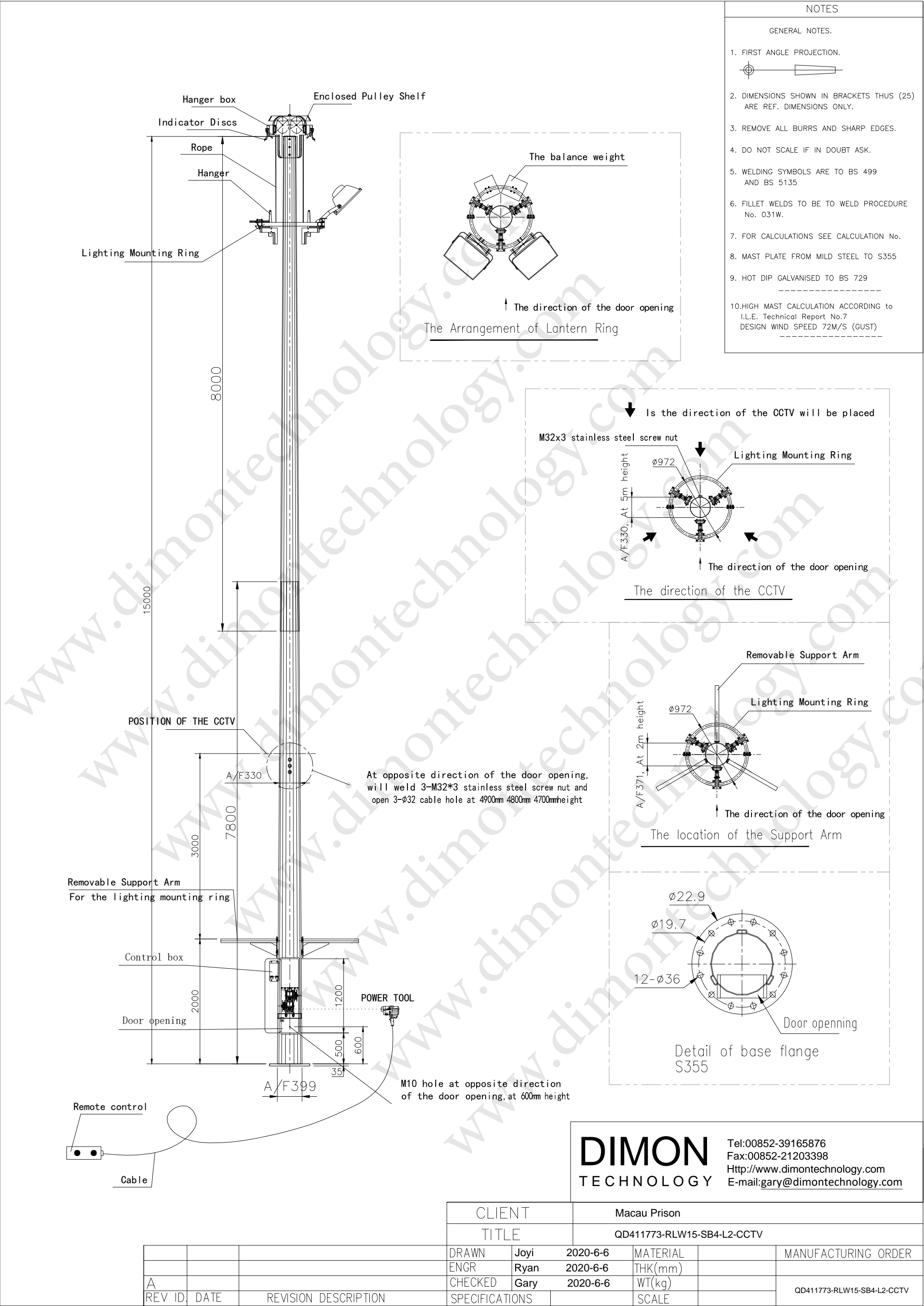
DIMON
TECHNOLOGY

Tel:00852-39165876
Fax:00852-21203398
Http://www.dimontechnology.com
E-mail:gary@dimontechnology.com

CLIENT
TITLE

Macau Prison
QD411773-RLW15-SB4-L2-WIFI&SPEAKER

			DRAWN	Joyi	2020-6-6	MATERIAL		
			ENGR	Ryan	2020-6-6	THK(mm)		MANUFACTURING ORDER
A			CHECKED	Gary	2020-6-6	WT(kg)		QD411773-RLW15-SB4-L2-WIFI&SPEAKER
REV ID	DATE	REVISION DESCRIPTION	SPECIFICATIONS			SCALE		



- NOTES
- GENERAL NOTES.
- FIRST ANGLE PROJECTION.
 - DIMENSIONS SHOWN IN BRACKETS THUS (25) ARE REF. DIMENSIONS ONLY.
 - REMOVE ALL BURRS AND SHARP EDGES.
 - DO NOT SCALE IF IN DOUBT ASK.
 - WELDING SYMBOLS ARE TO BS 499 AND BS 5135
 - FILLET WELDS TO BE TO WELD PROCEDURE No. 031W.
 - FOR CALCULATIONS SEE CALCULATION No.
 - MAST PLATE FROM MILD STEEL TO S355
 - HOT DIP GALVANISED TO BS 729
 - HIGH MAST CALCULATION ACCORDING to I.L.E. Technical Report No.7 DESIGN WIND SPEED 72M/S (GUST)

DIMON
TECHNOLOGY

Tel:00852-39165876
Fax:00852-21203398
Http://www.dimontechnology.com
E-mail:gary@dimontechnology.com

CLIENT			Macau Prison			
TITLE			QD411773-RLW15-SB4-L2-CCTV			
		DRAWN	Joyi	2020-6-6	MATERIAL	MANUFACTURING ORDER
		ENGR	Ryan	2020-6-6	THK(mm)	
		CHECKED	Gary	2020-6-6	WT(kg)	
		SPECIFICATIONS			SCALE	
A						QD411773-RLW15-SB4-L2-CCTV
REV ID	DATE	REVISION DESCRIPTION				

