

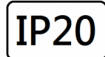
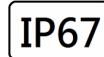



- Onstage running lights
- Auditoriums
- Houses of worship
- Museums
- Studios

BlueBeam: The dimmable, directional BlueBeam is perfect for loading galleries, upstage crossovers, scenery docks, fly rails and other backstage spaces. With four flexible beam angles, BlueBeam can illuminate tight spaces or long throws up to 50 feet. BlueBeam comes in white and black color options to blend into any behind-the-scenes environment. An optional, snap-on cowl accessory neatly prevents unwanted light spill.

Technical Data

Luminaire Type/ 安裝方式/Tipo de luminaria	Surface Mounted Type 明裝式燈具/Superficie Tipo Montado
Color -顏色-Color Color Temperature 色溫 Temperatura del color	• BLUE 450-460nm Color
Power Consumption Max燈具最大功率 Consumo de energía Max	• 3W
Input Voltage / 輸入電壓 Voltaje de entrada	• DC 12V ON/OFF • DC 12V with Integrated DMX512 decoder
Control Protocol-控制協議 Protocolo de Control	DMX 512A
Pixels & DMX Channels 像素和DMX 通道 Píxeles y canales DMX	• 1 PXL =1 DMX Channels
Beam Angle/光束角 ángulo de haz	• Lens and Glass 10° 15° 20° 65° • Opal Polycarbonate Diffuser : 155°--- Opal Polycarbonate Diffuser
Light Source Brand/光源品牌 Fuente de luz de marca	CREE
LED Life/LED壽命 La vida del LED	>50,000 hours
Luminaire Efficacy-燈具效率 La eficacia de la luminaria	• 14.9 lm /w @ Lens and Glass Beam Anlge 10° • 15.2 lm /w @ Lens and Glass Beam Anlge 15° • 14.9 lm /w @ Lens and Glass Beam Anlge 20° • 13.0 lm /w @ Lens and Glass Beam Anlge 65° • 5.1 lm/w @ Opal Polycarbonate Diffuser Beam Anlge 155°
LED Source Luminous Efficacy-LED光源光效 Fuente luminosa LED Eficacia	50lm/w
Housing materials/外殼材料 Materiales de la carcasa	• Die-cast aluminum and Opal Polycarbonate / 壓鑄鋁和乳白PC罩/Aluminio fundido a presión y policarbonato opal • Die-cast aluminum, Lens and Clear Safety glass lampshade/鑄鋁和透明安全玻璃燈罩/Pantalla de aluminio fundido a presión y vidrio de seguridad transparente
Housing Color 外殼顏色 color de la carcasa	Powder Coating : Matte Black 粉末塗料: 啞光黑色 Recubrimiento en Polvo: Negro mate
Operating Temperature Range / 工作溫度範圍 Rango de temperatura de funcionamiento	-20 °C / + 50 °C
Operating Humidity -工作濕度 Humedad de funcionamiento	0~90%, non-condensing-不結霜 sin condensación
Ingress Protection/ 防護等級 Protección de ingreso	• IP20 • IP67
Dimension/尺寸Dimensión	Refer to technical drawing請參閱技術圖紙 Consulte el dibujo técnico
Accesorios配件 accesorios	• Cowl 兜帽 Capucha • Eyelid light baffle 眼瞼擋光板 efector de luz de párpado
Comply Testing Standard 符合測試標準 Cumplir el estándar de prueba	• LED Luminaries: EN 60598-1; EN 60598-2-1 ; EN62471;EN 62031; EN62493 RoHS • LED Luminaries: EN55015 ; EN61547 ; EN/IEC 61000 ; IEC62717
Certification-認證-Certificación	    

Project	Fixture#	Date
		Firm

Ordering Information

Choose the option that suits your need and write its corresponding code on the appropriate line to form the product code.

Example product code: [PIYAD-3W](#)

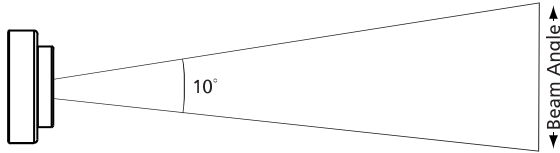
PIYAD - 3W
Power Consumption

Power Consumption	
Code	Description
3W	3W

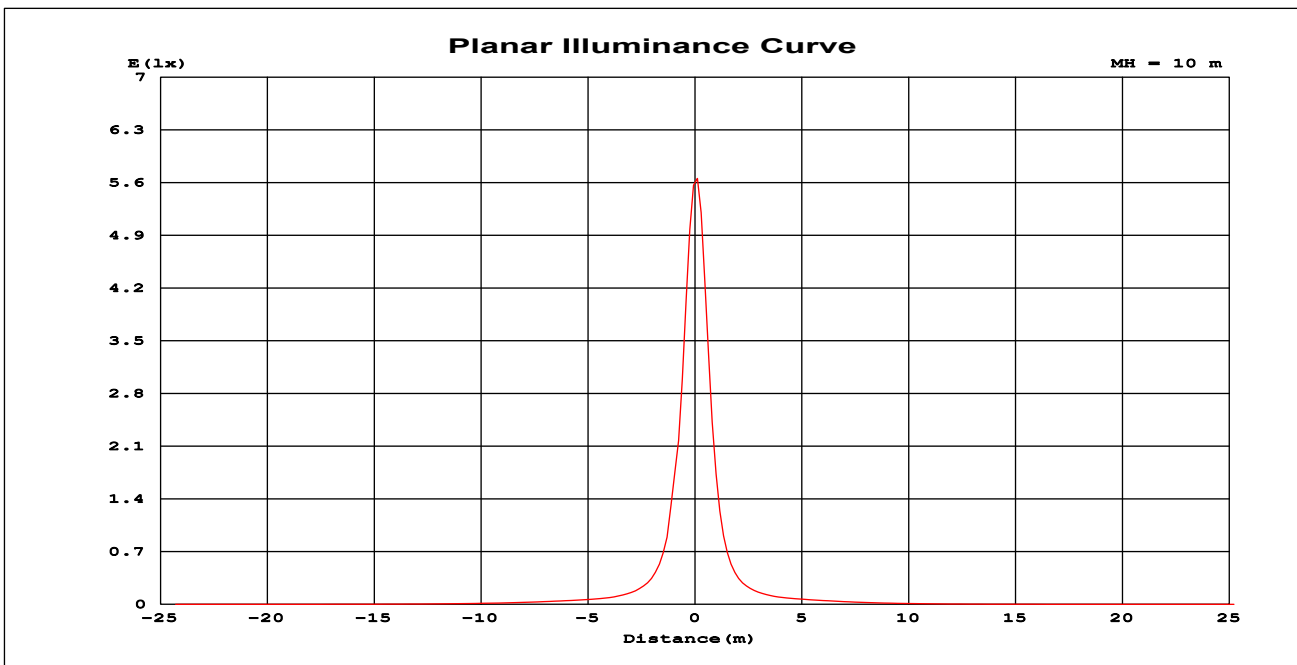
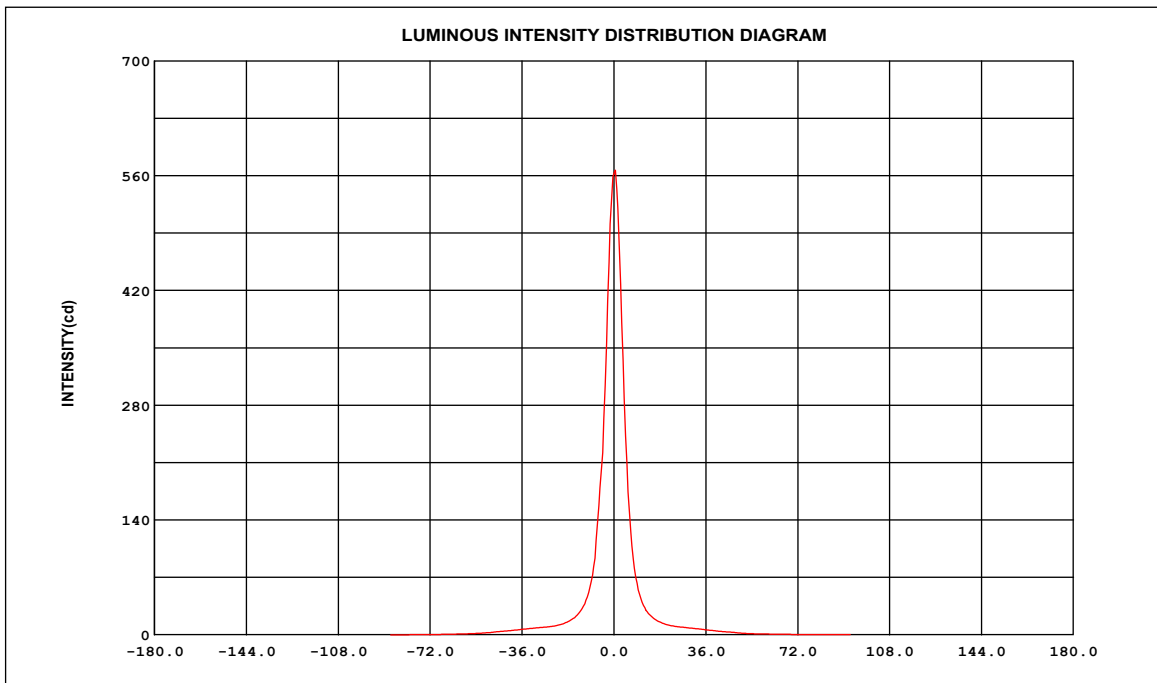


PHOTOMETRICS-Very Narrow Spot Beam (VNSP)

Mode	Degree	Candela	Field Lumens	Beam Lumens	Power Consumption	Efficacy
Full Intensity	10	560cd	41.4lm	19.0lm	2.8W	14.9lm/w

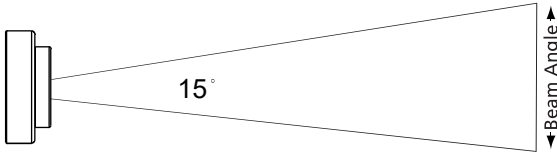


DATA OF LAMP		Eff: 14.91lm/W	
MODEL		Imax (cd)	560.6
NOMINAL POWER (W)	2.8	AVAILABILITY (%)	46.0
RATED VOLTAGE (V)	12	Avai. FLUX(lm)	19.06
NOMINAL FLUX (lm)	41.418	LOR (%)	100.0
LAMPS INSIDE	1	TOTAL FLUX(lm)	41.42
TEST VOLTAGE (V)	12	@50% (H, V)	9,8DEG

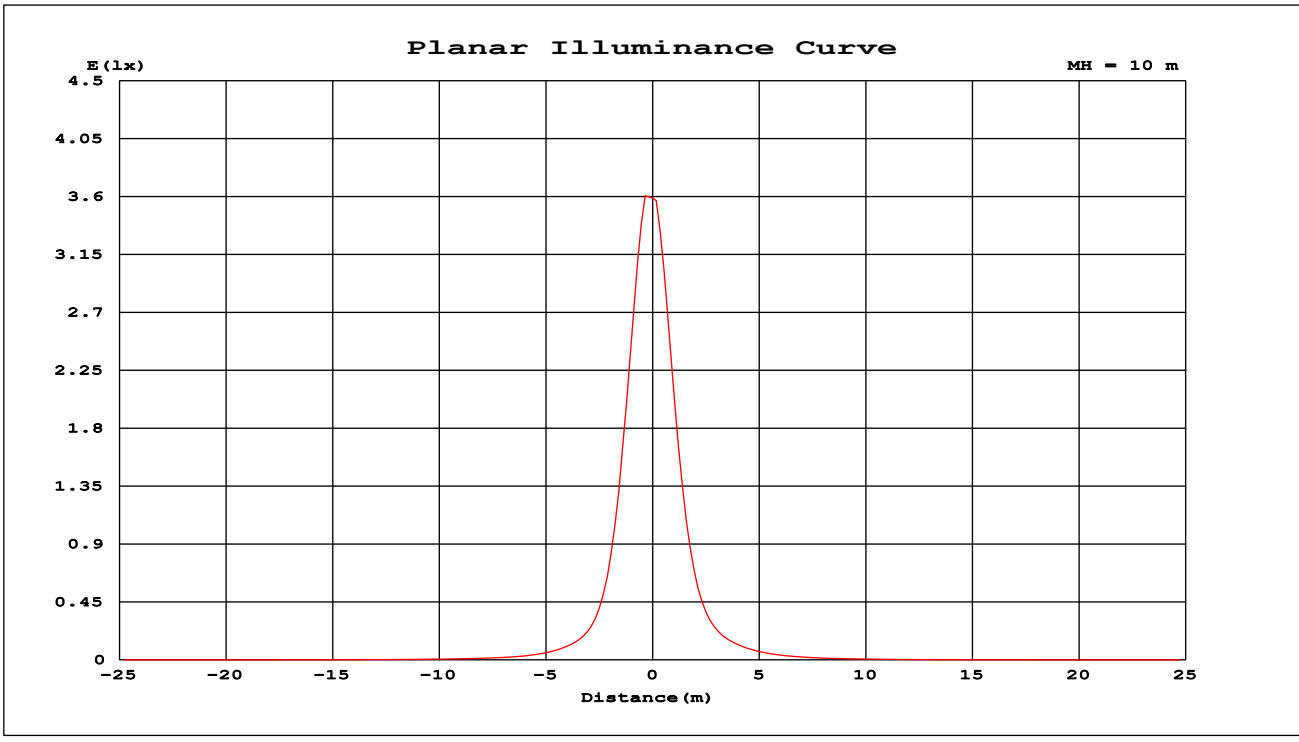
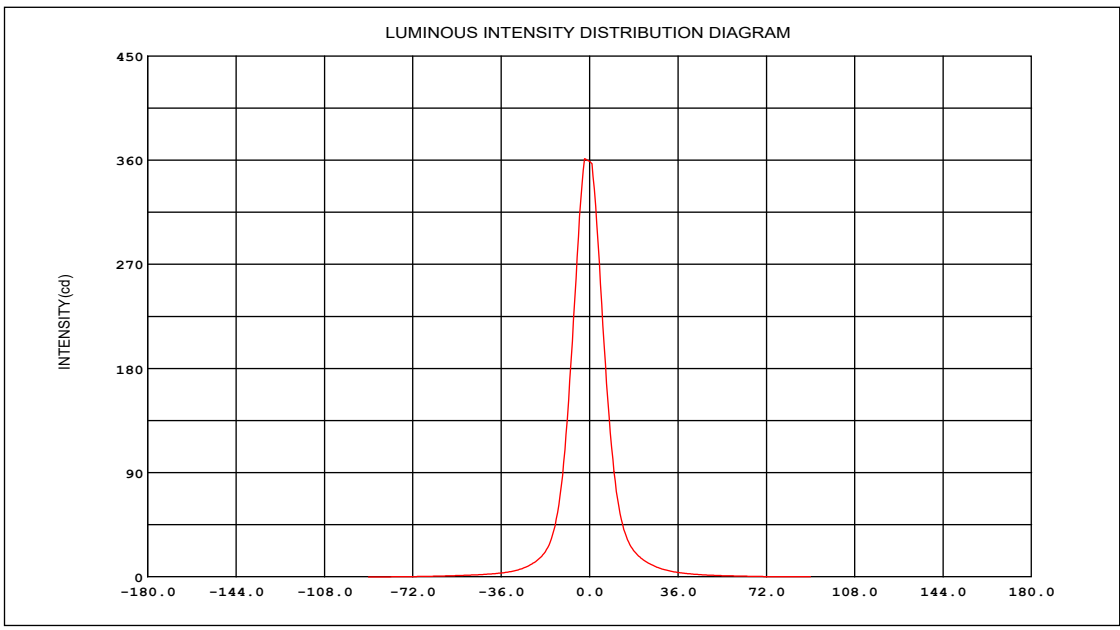


PHOTOMETRICS- Narrow Spot Beam (NSP)

Mode	Degree	Candela	Field Lumens	Beam Lumens	Power Consumption	Efficacy
Full Intensity	15	360.7cd	42.5lm	26.97lm	2.8W	15.2lm/w

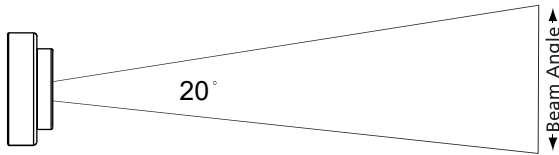


DATA OF LAMP		Eff:15.20lm/W	
MODEL		I _{max} (cd)	360.7
NOMINAL POWER (W)	2.8	AVAILABILITY (%)	63.4
RATED VOLTAGE (V)	12	Avai. FLUX (lm)	26.97
NOMINAL FLUX (lm)	42.555	LOR (%)	100.0
LAMPS INSIDE	1	TOTAL FLUX (lm)	42.55
TEST VOLTAGE (V)	12	@50% (H,V)	15,13DEG

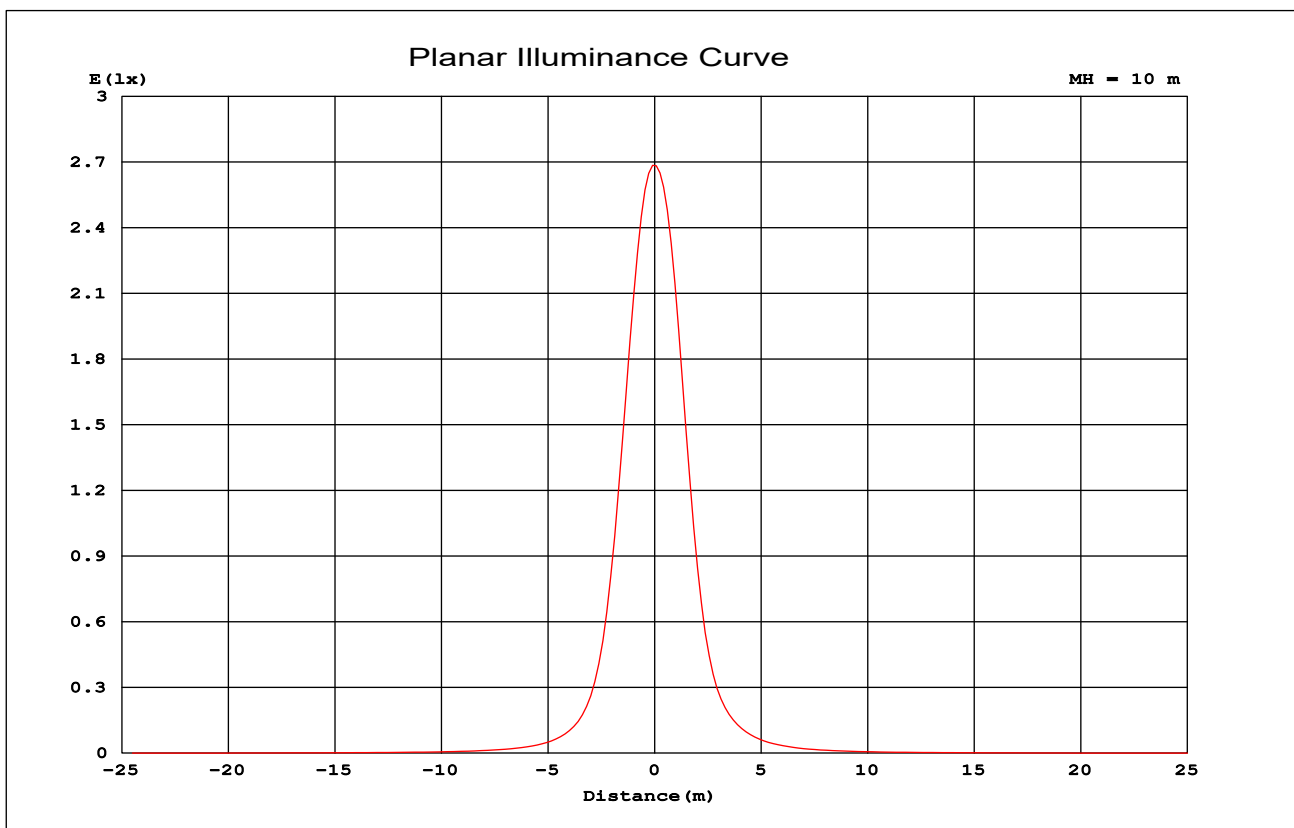
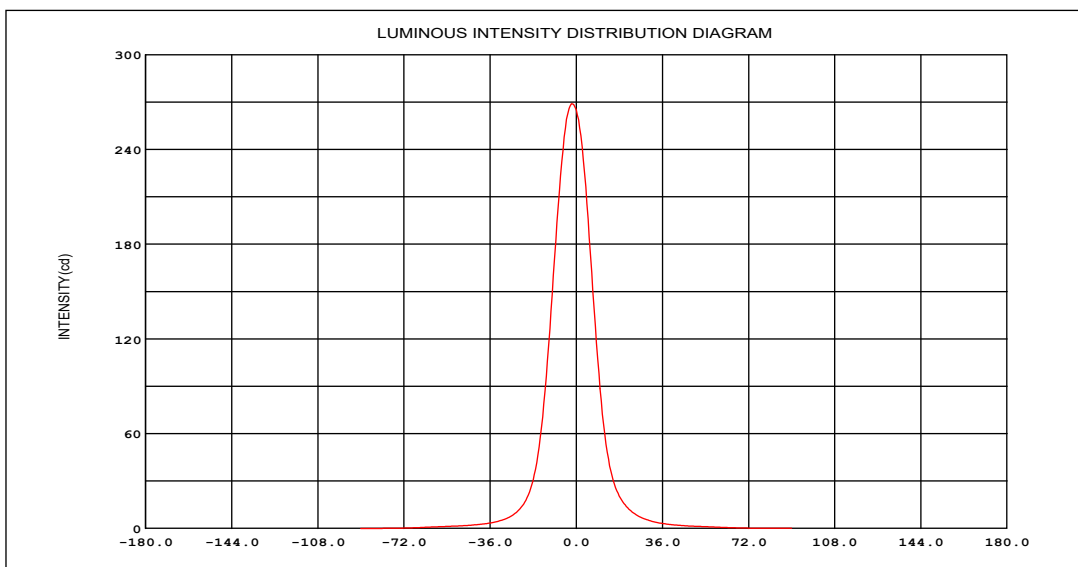


PHOTOMETRIC-Medium Flood Beam (MFL)

Mode	Degree	Candela	Field Lumens	Beam Lumens	Power Consumption	Efficacy
Full Intensity	20	270.6cd	41.3lm	28.98lm	2.8W	14.9lm/w

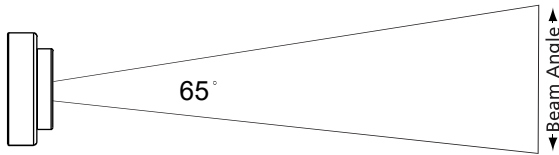


DATA OF LAMP		Eff: 14.91lm/W	
MODEL		I _{max} (cd)	270.6
NOMINAL POWER (W)	2.8	AVAILABILITY (%)	70.1
RATED VOLTAGE (V)	12	Avai. FLUX (lm)	28.98
NOMINAL FLUX (lm)	41.3304	LOR (%)	100.0
LAMPS INSIDE	1	TOTAL FLUX (lm)	41.33
TEST VOLTAGE (V)	12	@50% (H, V)	20, 18DEG

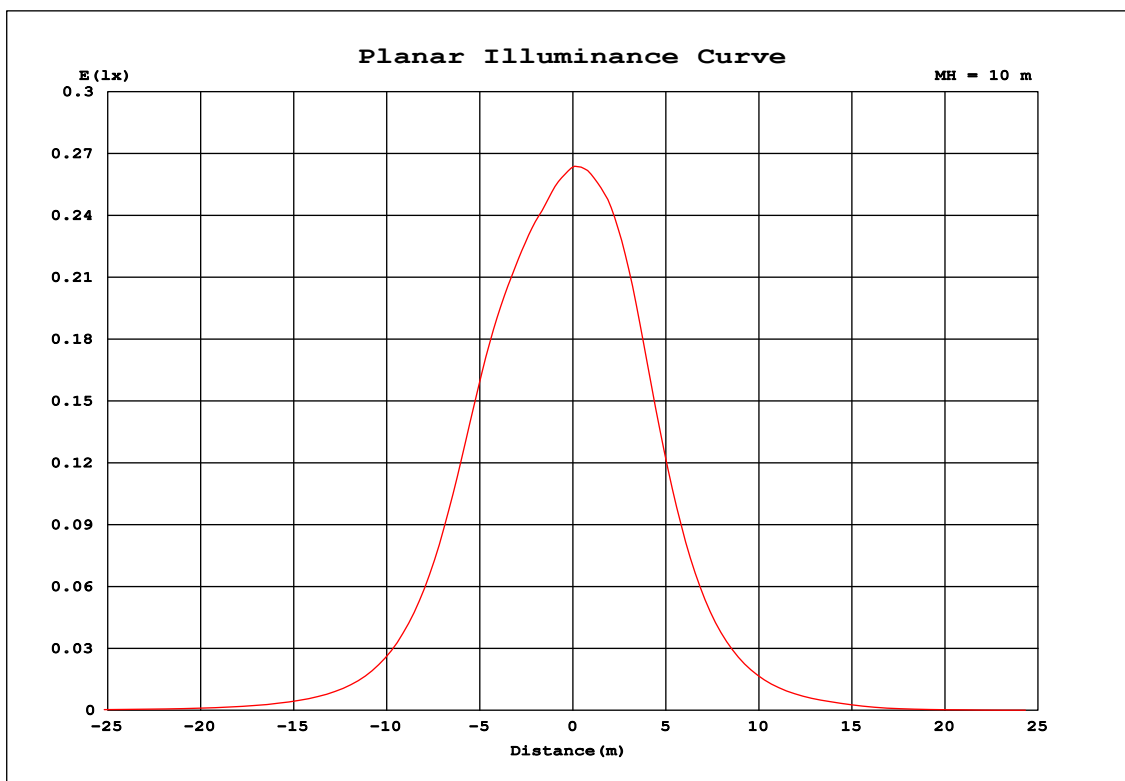
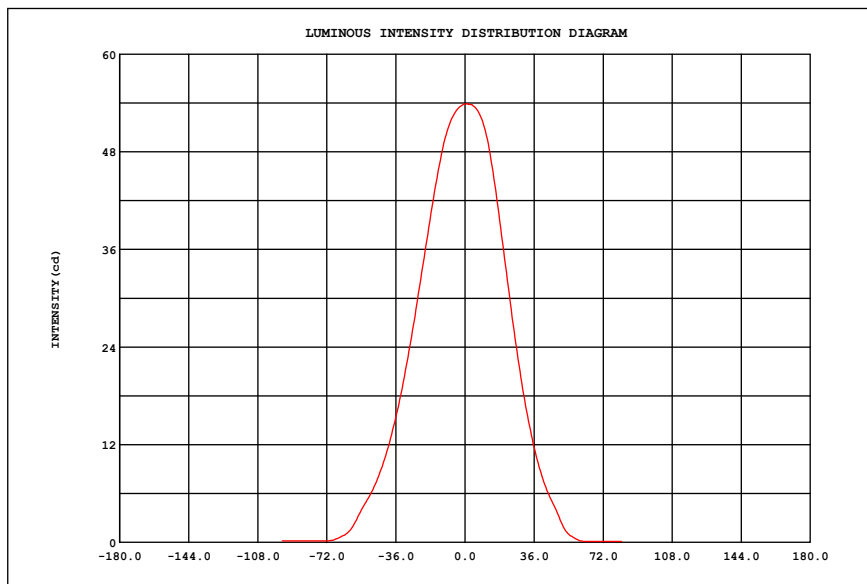


PHOTOMETRIC-Wide Flood Beam (WFL)

Mode	Degree	Candela	Field Lumens	Beam Lumens	Power Consumption	Efficacy
Full Intensity	65	26.95cd	35.74lm	33.06lm	2.8W	13.0lm/w

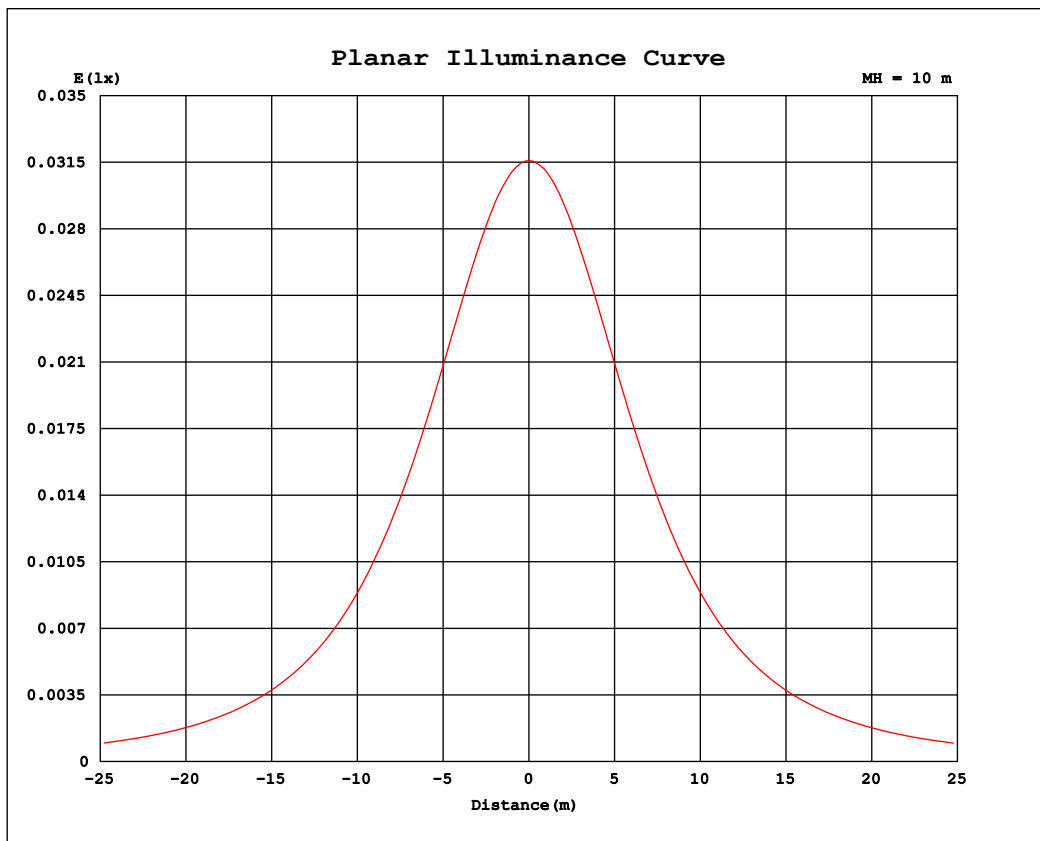
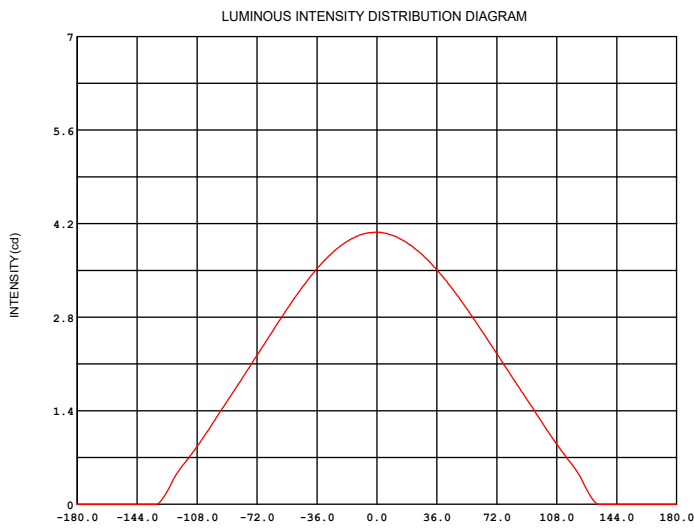
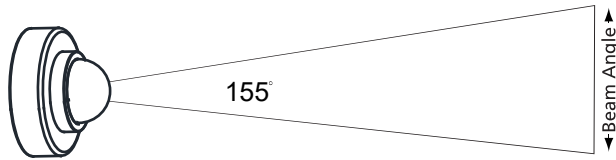


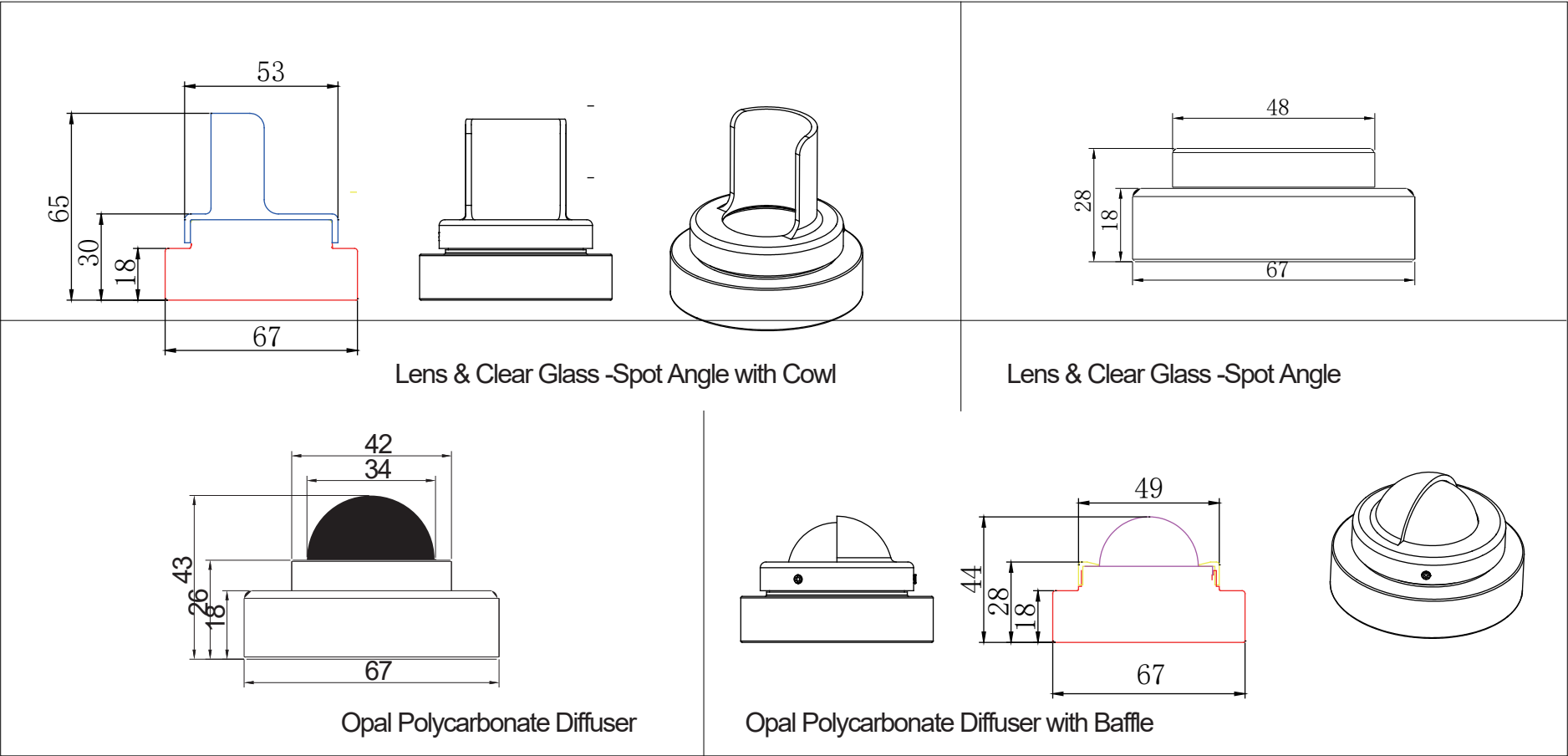
DATA OF LAMP		Eff:13.01lm/W	
MODEL		Imax (cd)	26.95
NOMINAL POWER (W)	2.8	AVAILABILITY (%)	92.5
RATED VOLTAGE (V)	12	Avai. FLUX (lm)	33.06
NOMINAL FLUX (lm)	35.7435	LOR (%)	100.0
LAMPS INSIDE	1	TOTAL FLUX (lm)	35.74
TEST VOLTAGE (V)	12	@50% (H,V)	65,70DEG



PHOTOMETRICS-DOME Wide BEAM

Mode	Degree	Candela	Field Lumens	Beam Lumens	Power Consumption	Efficacy
Full Intensity	155	3.16cd	15.24lm	13.24lm	2.8W	5.1lm/w

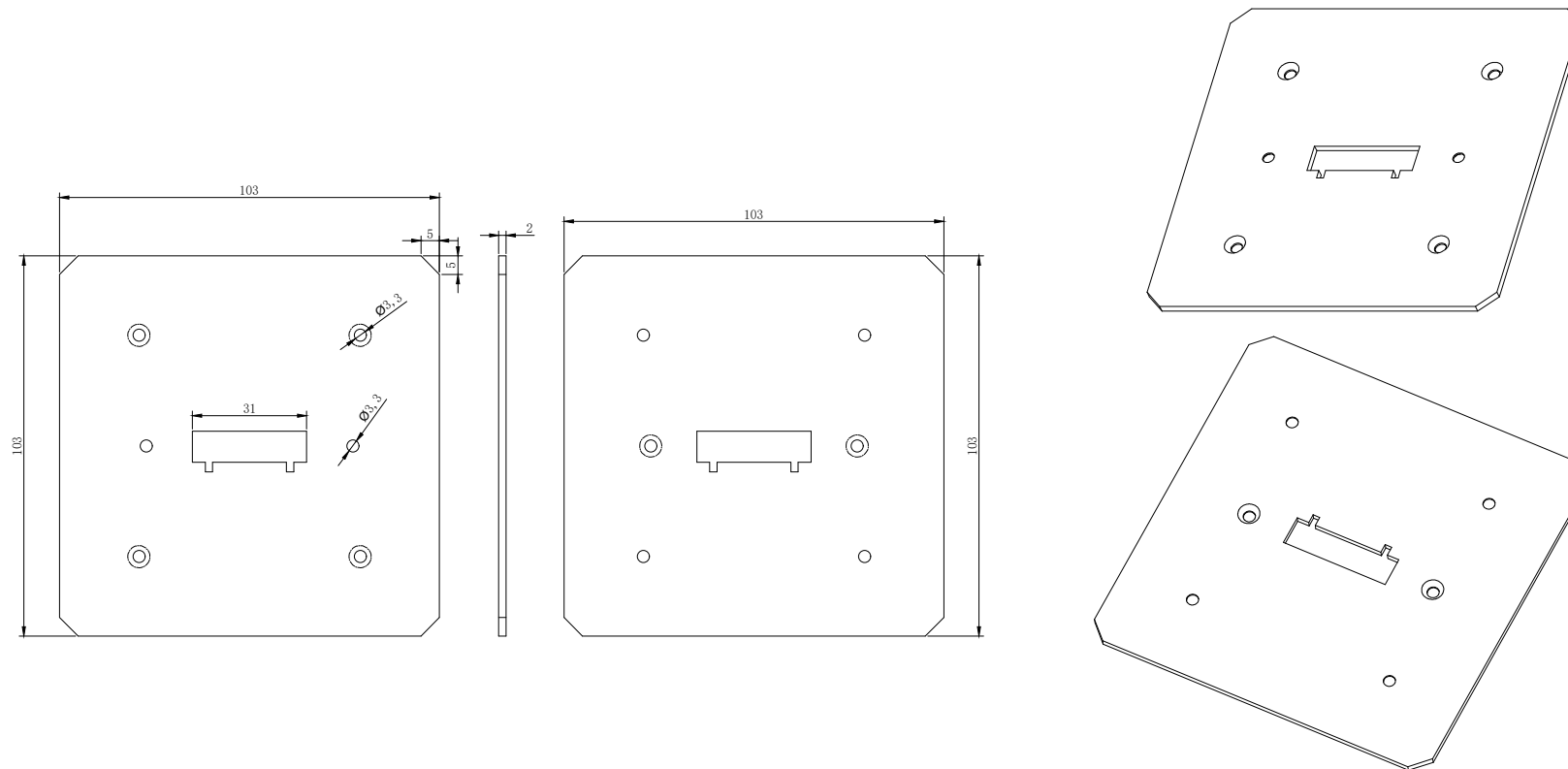
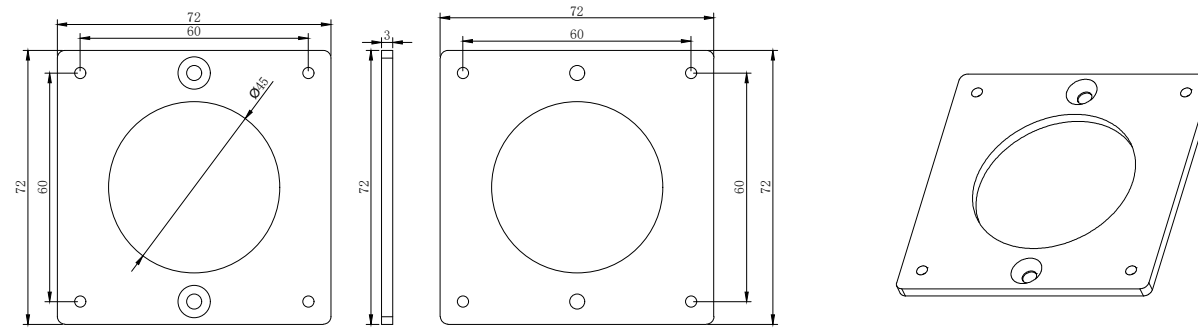




Unit: mm

Installation Plate for Junction box

P/N: PIYAD-JBP



DIMON
Technology

DIMON Technology Ltd.
Tel:00852-3916 5876
Fax:00852-21203398
Http://www.dimontechnology.com
E-mail:gary@dimontechnology.com

Job Title:
PIYAD Lighting Mounting Part

Drawing Name:
Technical Drawing

Drawing NO. : TD-001

Drawing Scale: AS SHOW

Drawing Date: 2022/07/12

Drawing: Joyi

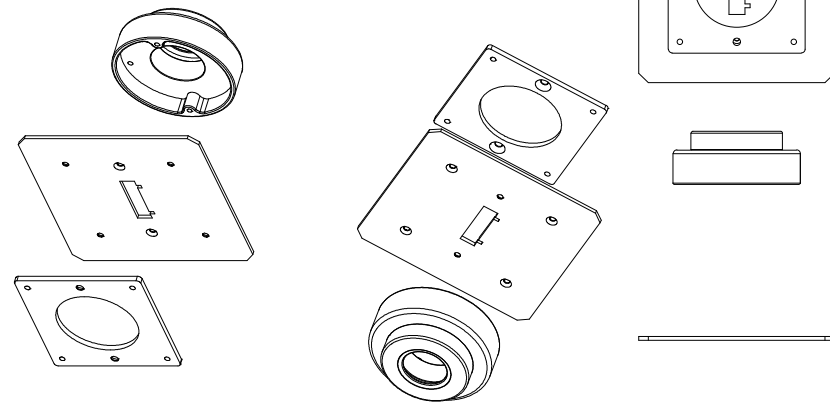
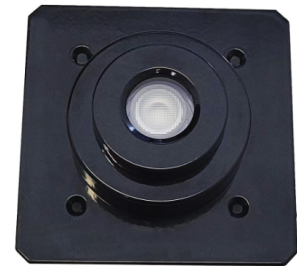
Collate: Alove

Auditing: Denny

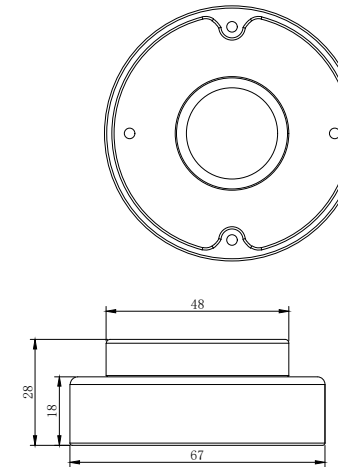
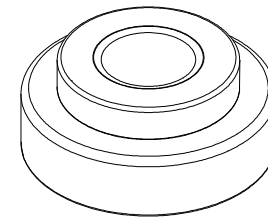
Drawing Version: V1

1:2 @ A3

Installation Plate for Junction box

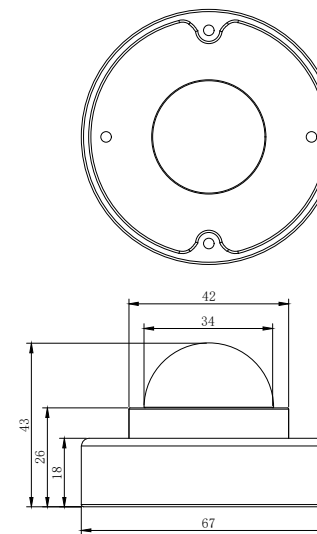
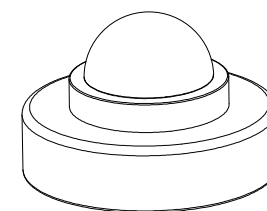
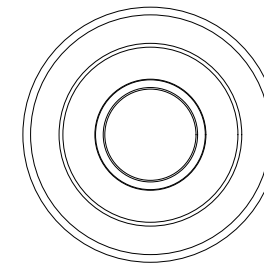


1:3 @ A3



Lens & Clear Glass -Spot Angle

1:2 @ A3



Opal Polycarbonate Diffuser

1:2 @ A3

DIMON
Technology

DIMON Technology Ltd.
Tel:00852-3916 5876
Fax:00852-21203398
Http://www.dimontechnology.com
E-mail:gary@dimontechnology.com

Job Title:
PIYAD Lighting

Drawing Name:
Technical Drawing

Drawing NO. : TD-002

Drawing Scale: AS SHOW

Drawing Date: 2022/07/12

Drawing: Joyi

Collate: Alove

Auditing: Denny

Drawing Version: V1