

Certificate Number: B-R200831204
RoHS Directive 2011/65/EU Annex II
amending Annex (EU)2015/863 and
amending Annex (EU)2017/2102



Holder.....: DIMON Technology Limited
Address.....: Suite 14, 11/F Cheung Hing Industrial Building,23 Tai Yip Street, Kwun Tong, Kowloon, Hong Kong
Manufacturer.....: Same As Holder
Product.....: Wall-mounted/Desktop Air Purifier
Model No.....: EVO-18, EVO-08, EVO-128, EVO-CO

Trademark.....: 

The submitted products have been tested by us and found to be in compliance with the listed European Directives.

The test results apply only to the particular sample tested and to the specific tests carried out. Technical Report and documentation are at the Holder's disposal.

This certificate applies specifically to the sample investigated in our test reference number only. The CE markings as shown below can be affixed on the product after preparation of necessary technical documentation. Other relevant Directives have to be observed.



Certification Manager
Date: Aug. 05, 2020



Company No.07113834



0757A304

Beide (Shenzhen) Product Service Limited

6F, Bldg E, Hourui 3rd Ind Zone, Xixiang, Bao'an Dist, Shenzhen, China

Http://www.szbeide.com E-mail: admin@szbeide.com

RoHS TEST REPORT

Report No. : B-R200831204

Date: Aug. 05, 2020

Page 1 of 17

Applicant : DIMON Technology Limited
Address : Suite 14, 11/F Cheung Hing Industrial Building,
23 Tai Yip Street, Kwun Tong, Kowloon, Hong Kong
Client No : 0757A304
Manufacturer : DIMON Technology Limited
Address : Suite 14, 11/F Cheung Hing Industrial Building,
23 Tai Yip Street, Kwun Tong, Kowloon, Hong Kong



Report on the submitted sample said to be

Sample Name : Wall-mounted/Desktop Air Purifier

Model No : EVO-18, EVO-08, EVO-128, EVO-CO

Sample model : EVO-CO

Trademark

The logo for DIMON TECHNOLOGY, featuring the word 'DIMON' in a bold, sans-serif font above the word 'TECHNOLOGY' in a smaller, all-caps font.

Sample Received Date : Aug. 03, 2020

Complete Date : Aug. 05, 2020

Test Requested : As specified by client, to determine the Cadmium, Lead, Mercury, Hexavalent Chromium, PBBs / PBDEs, Bis-(2-ethylhexyl) Phthalate (DEHP), Diisobutyl phthalate(DIBP), Dibutyl Phthalate (DBP) & Benzylbutyl Phthalate (BBP) content in the submitted sample.

Test Result(s) : Conform to RoHS Directive 2011/65/EU Annex II amending Annex (EU)2015/863 and amending Annex (EU)2017/2102.



Company No. 07113834 *****FOR FURTHER DETAILS, PLEASE REFER TO THE FOLLOWING PAGE(S)*****

Written by: Chen Qin
(Chen Qin)

Inspected by: Austin Zhong
(Austin Zhong)

Approved by: Martin Wang
Beide (Shenzhen) Product Service Limited
Compliance Laboratory
(Martin Wang)

This report is considered invalidated without the Special Seal for Inspection of the Beide (Shenzhen) Product Service Limited, This report shall not be altered, increased or deleted. The results shown in this test report refer only to the sample(s) tested. Without written approval of Beide (Shenzhen) Product Service Limited, this test report shall not be copied except in full and published as advertisement.

RoHS TEST REPORT

Report No. : B-R200831204

Date: Aug. 05, 2020

Page 2 of 17

Test Method: With reference to IEC 62321-4:2013:A1:2017, IEC 62321-5:2013, IEC 62321-7-2:2017, IEC 62321-6:2015

- (1) Determination of Cadmium by ICP-OES.
- (2) Determination of Lead by ICP-OES.
- (3) Determination of Mercury by ICP-OES.
- (4) Determination of Hexavalent Chromium by Colorimetric Method using UV-Vis.
- (5) Determination of PBBs / PBDEs content by GC-MS.
- (6) Determination of phthalates by GC-MS.

Test Result(s):

Test item	Unit	Limit	Result			
			Plastic shell (1)	The lid (2)	Filter cotton (3)	The rubber button (4)
Cadmium (Cd).	mg/kg	100	N.D.	N.D.	N.D.	N.D.
Lead (Pb).	mg/kg	1000	N.D.	N.D.	9.5247	N.D.
Mercury (Hg).	mg/kg	1000	N.D.	N.D.	N.D.	N.D.
Hexavalent Chromium (Cr VI).	mg/kg	1000	N.D.	N.D.	N.D.	N.D.
Polybrominated Biphenyls (PBBs)	mg/kg	1000	N.D.	N.D.	N.D.	N.D.
Monobromobiphenyl	mg/kg	/	N.D.	N.D.	N.D.	N.D.
Dibromobiphenyl	mg/kg	/	N.D.	N.D.	N.D.	N.D.
Tribromobiphenyl	mg/kg	/	N.D.	N.D.	N.D.	N.D.
Tetrabromobiphenyl	mg/kg	/	N.D.	N.D.	N.D.	N.D.
Pentabromobiphenyl	mg/kg	/	N.D.	N.D.	N.D.	N.D.
Hexabromobiphenyl	mg/kg	/	N.D.	N.D.	N.D.	N.D.
Heptabromobiphenyl	mg/kg	/	N.D.	N.D.	N.D.	N.D.
Octabromobiphenyl	mg/kg	/	N.D.	N.D.	N.D.	N.D.

This report is considered invalidated without the Special Seal for Inspection of the Beide (Shenzhen) Product Service Limited, This report shall not be altered, increased or deleted. The results shown in this test report refer only to the sample(s) tested. Without written approval of Beide (Shenzhen) Product Service Limited, this test report shall not be copied except in full and published as advertisement.

RoHS TEST REPORT

Report No. : B-R200831204

Date: Aug. 05, 2020

Page 3 of 17

Test item	Unit	Limit	Result			
			Plastic shell (1)	The lid (2)	Filter cotton (3)	The rubber button (4)
Nonabromobiphenyl	mg/kg	/	N.D.	N.D.	N.D.	N.D.
Decabromobiphenyl	mg/kg	/	N.D.	N.D.	N.D.	N.D.
Polybrominated Diphenyl Ethers (PBDEs)	mg/kg	1000	N.D.	N.D.	N.D.	N.D.
Monobromodiphenyl Ether	mg/kg	/	N.D.	N.D.	N.D.	N.D.
Dibromodiphenyl Ether	mg/kg	/	N.D.	N.D.	N.D.	N.D.
Tribromodiphenyl Ether	mg/kg	/	N.D.	N.D.	N.D.	N.D.
Tetrabromodiphenyl Ether	mg/kg	/	N.D.	N.D.	N.D.	N.D.
Pentabromodiphenyl Ether	mg/kg	/	N.D.	N.D.	N.D.	N.D.
Hexabromodiphenyl Ether	mg/kg	/	N.D.	N.D.	N.D.	N.D.
Heptabromodiphenyl Ether	mg/kg	/	N.D.	N.D.	N.D.	N.D.
Octabromodiphenyl Ether	mg/kg	/	N.D.	N.D.	N.D.	N.D.
Nonabromodiphenyl Ether	mg/kg	/	N.D.	N.D.	N.D.	N.D.
Decabromodiphenyl Ether	mg/kg	/	N.D.	N.D.	N.D.	N.D.
Diisobutyl phthalate(DIBP)	mg/kg	1000	N.D.	N.D.	N.D.	N.D.
Dibutyl Phthalate (DBP)	%(w/w)	1000	N.D.	N.D.	N.D.	N.D.
Benzylbutyl Phthalate (BBP)	%(w/w)	1000	N.D.	N.D.	N.D.	N.D.
Bis-(2-ethylhexyl) Phthalate (DEHP)	%(w/w)	1000	N.D.	N.D.	N.D.	N.D.

This report is considered invalidated without the Special Seal for Inspection of the Beide (Shenzhen) Product Service Limited, This report shall not be altered, increased or deleted. The results shown in this test report refer only to the sample(s) tested. Without written approval of Beide (Shenzhen) Product Service Limited, this test report shall not be copied except in full and published as advertisement.

RoHS TEST REPORT

Report No. : B-R200831204

Date: Aug. 05, 2020

Page 4 of 17

Test item	Unit	Limit	Result			
			The remote control PCB (5)	Remote control enclosure (6)	The fan casing (7)	The charging interface (8)
Cadmium (Cd).	mg/kg	100	7.6208	N.D.	N.D.	N.D.
Lead (Pb).	mg/kg	1000	N.D.	N.D.	N.D.	10.9995
Mercury (Hg).	mg/kg	1000	N.D.	N.D.	N.D.	N.D.
Hexavalent Chromium (Cr VI).	mg/kg	1000	N.D.	N.D.	N.D.	N.D.
Polybrominated Biphenyls (PBBs)	mg/kg	1000	N.D.	N.D.	N.D.	N.D.
Monobromobiphenyl	mg/kg	/	N.D.	N.D.	N.D.	N.D.
Dibromobiphenyl	mg/kg	/	N.D.	N.D.	N.D.	N.D.
Tribromobiphenyl	mg/kg	/	N.D.	N.D.	N.D.	N.D.
Tetrabromobiphenyl	mg/kg	/	N.D.	N.D.	N.D.	N.D.
Pentabromobiphenyl	mg/kg	/	N.D.	N.D.	N.D.	N.D.
Hexabromobiphenyl	mg/kg	/	N.D.	N.D.	N.D.	N.D.
Heptabromobiphenyl	mg/kg	/	N.D.	N.D.	N.D.	N.D.
Octabromobiphenyl	mg/kg	/	N.D.	N.D.	N.D.	N.D.
Nonabromobiphenyl	mg/kg	/	N.D.	N.D.	N.D.	N.D.
Decabromobiphenyl	mg/kg	/	N.D.	N.D.	N.D.	N.D.
Polybrominated Diphenyl Ethers (PBDEs)	mg/kg	1000	N.D.	N.D.	N.D.	N.D.
Monobromodiphenyl Ether	mg/kg	/	N.D.	N.D.	N.D.	N.D.

This report is considered invalidated without the Special Seal for Inspection of the Beide (Shenzhen) Product Service Limited, This report shall not be altered, increased or deleted. The results shown in this test report refer only to the sample(s) tested. Without written approval of Beide (Shenzhen) Product Service Limited, this test report shall not be copied except in full and published as advertisement.

RoHS TEST REPORT

Report No. : B-R200831204

Date: Aug. 05, 2020

Page 5 of 17

Test item	Unit	Limit	Result			
			The remote control PCB (5)	Remote control enclosure (6)	The fan casing (7)	The charging interface (8)
Dibromodiphenyl Ether	mg/kg	/	N.D.	N.D.	N.D.	N.D.
Tribromodiphenyl Ether	mg/kg	/	N.D.	N.D.	N.D.	N.D.
Tetrabromodiphenyl Ether	mg/kg	/	N.D.	N.D.	N.D.	N.D.
Pentabromodiphenyl Ether	mg/kg	/	N.D.	N.D.	N.D.	N.D.
Hexabromodiphenyl Ether	mg/kg	/	N.D.	N.D.	N.D.	N.D.
Heptabromodiphenyl Ether	mg/kg	/	N.D.	N.D.	N.D.	N.D.
Octabromodiphenyl Ether	mg/kg	/	N.D.	N.D.	N.D.	N.D.
Nonabromodiphenyl Ether	mg/kg	/	N.D.	N.D.	N.D.	N.D.
Decabromodiphenyl Ether	mg/kg	/	N.D.	N.D.	N.D.	N.D.
Diisobutyl phthalate(DIBP)	mg/kg	1000	N.D.	N.D.	N.D.	N.D.
Dibutyl Phthalate (DBP)	%(w/w)	1000	N.D.	N.D.	N.D.	N.D.
Benzylbutyl Phthalate (BBP)	%(w/w)	1000	N.D.	N.D.	N.D.	N.D.
Bis-(2-ethylhexyl) Phthalate (DEHP)	%(w/w)	1000	N.D.	N.D.	N.D.	N.D.

This report is considered invalidated without the Special Seal for Inspection of the Beide (Shenzhen) Product Service Limited, This report shall not be altered, increased or deleted. The results shown in this test report refer only to the sample(s) tested. Without written approval of Beide (Shenzhen) Product Service Limited, this test report shall not be copied except in full and published as advertisement.

RoHS TEST REPORT

Report No. : B-R200831204

Date: Aug. 05, 2020

Page 6 of 17

Test item	Unit	Limit	Result			
			Screw (9)	Black plastic parts (10)	White wire(11)	White thin conductor (12)
Cadmium (Cd).	mg/kg	100	N.D.	13.248	4.0367	N.D.
Lead (Pb).	mg/kg	1000	N.D.	N.D.	5.7422	N.D.
Mercury (Hg).	mg/kg	1000	N.D.	N.D.	2.4455	N.D.
Hexavalent Chromium (Cr VI).	mg/kg	1000	N.D.	N.D.	N.D.	N.D.
Polybrominated Biphenyls (PBBs)	mg/kg	1000	N.D.	N.D.	N.D.	N.D.
Monobromobiphenyl	mg/kg	/	N.D.	N.D.	N.D.	N.D.
Dibromobiphenyl	mg/kg	/	N.D.	N.D.	N.D.	N.D.
Tribromobiphenyl	mg/kg	/	N.D.	N.D.	N.D.	N.D.
Tetrabromobiphenyl	mg/kg	/	N.D.	N.D.	N.D.	N.D.
Pentabromobiphenyl	mg/kg	/	N.D.	N.D.	N.D.	N.D.
Hexabromobiphenyl	mg/kg	/	N.D.	N.D.	N.D.	N.D.
Heptabromobiphenyl	mg/kg	/	N.D.	N.D.	N.D.	N.D.
Octabromobiphenyl	mg/kg	/	N.D.	N.D.	N.D.	N.D.
Nonabromobiphenyl	mg/kg	/	N.D.	N.D.	N.D.	N.D.
Decabromobiphenyl	mg/kg	/	N.D.	N.D.	N.D.	N.D.
Polybrominated Diphenyl Ethers (PBDEs)	mg/kg	1000	N.D.	N.D.	N.D.	N.D.
Monobromodiphenyl Ether	mg/kg	/	N.D.	N.D.	N.D.	N.D.

This report is considered invalidated without the Special Seal for Inspection of the Beide (Shenzhen) Product Service Limited, This report shall not be altered, increased or deleted. The results shown in this test report refer only to the sample(s) tested. Without written approval of Beide (Shenzhen) Product Service Limited, this test report shall not be copied except in full and published as advertisement.

RoHS TEST REPORT

Report No. : B-R200831204

Date: Aug. 05, 2020

Page 7 of 17

Test item	Unit	Limit	Result			
			Screw (9)	Black plastic parts (10)	White wire(11)	White thin conductor (12)
Dibromodiphenyl Ether	mg/kg	/	N.D.	N.D.	N.D.	N.D.
Tribromodiphenyl Ether	mg/kg	/	N.D.	N.D.	N.D.	N.D.
Tetrabromodiphenyl Ether	mg/kg	/	N.D.	N.D.	N.D.	N.D.
Pentabromodiphenyl Ether	mg/kg	/	N.D.	N.D.	N.D.	N.D.
Hexabromodiphenyl Ether	mg/kg	/	N.D.	N.D.	N.D.	N.D.
Heptabromodiphenyl Ether	mg/kg	/	N.D.	N.D.	N.D.	N.D.
Octabromodiphenyl Ether	mg/kg	/	N.D.	N.D.	N.D.	N.D.
Nonabromodiphenyl Ether	mg/kg	/	N.D.	N.D.	N.D.	N.D.
Decabromodiphenyl Ether	mg/kg	/	N.D.	N.D.	N.D.	N.D.
Diisobutyl phthalate(DIBP)	mg/kg	1000	N/A	N.D.	N.D.	N.D.
Dibutyl Phthalate (DBP)	%(w/w)	1000	N/A	N.D.	N.D.	N.D.
Benzylbutyl Phthalate (BBP)	%(w/w)	1000	N/A	N.D.	N.D.	N.D.
Bis-(2-ethylhexyl) Phthalate (DEHP)	%(w/w)	1000	N/A	N.D.	N.D.	N.D.

This report is considered invalidated without the Special Seal for Inspection of the Beide (Shenzhen) Product Service Limited, This report shall not be altered, increased or deleted. The results shown in this test report refer only to the sample(s) tested. Without written approval of Beide (Shenzhen) Product Service Limited, this test report shall not be copied except in full and published as advertisement.

RoHS TEST REPORT

Report No. : B-R200831204

Date: Aug. 05, 2020

Page 8 of 17

Test item	Unit	Limit	Result		
			Conductor (13)	The glass tube (14)	PCB (15)
Cadmium (Cd).	mg/kg	100	N.D.	N.D.	N.D.
Lead (Pb).	mg/kg	1000	N.D.	N.D.	N.D.
Mercury (Hg).	mg/kg	1000	7.58	N.D.	N.D.
Hexavalent Chromium (Cr VI).	mg/kg	1000	N.D.	N.D.	N.D.
Polybrominated Biphenyls (PBBs)	mg/kg	1000	N.D.	N.D.	N.D.
Monobromobiphenyl	mg/kg	/	N.D.	N.D.	N.D.
Dibromobiphenyl	mg/kg	/	N.D.	N.D.	N.D.
Tribromobiphenyl	mg/kg	/	N.D.	N.D.	N.D.
Tetrabromobiphenyl	mg/kg	/	N.D.	N.D.	N.D.
Pentabromobiphenyl	mg/kg	/	N.D.	N.D.	N.D.
Hexabromobiphenyl	mg/kg	/	N.D.	N.D.	N.D.
Heptabromobiphenyl	mg/kg	/	N.D.	N.D.	N.D.
Octabromobiphenyl	mg/kg	/	N.D.	N.D.	N.D.
Nonabromobiphenyl	mg/kg	/	N.D.	N.D.	N.D.
Decabromobiphenyl	mg/kg	/	N.D.	N.D.	N.D.
Polybrominated Diphenyl Ethers (PBDEs)	mg/kg	1000	N.D.	N.D.	N.D.
Monobromodiphenyl Ether	mg/kg	/	N.D.	N.D.	N.D.

This report is considered invalidated without the Special Seal for Inspection of the Beide (Shenzhen) Product Service Limited, This report shall not be altered, increased or deleted. The results shown in this test report refer only to the sample(s) tested. Without written approval of Beide (Shenzhen) Product Service Limited, this test report shall not be copied except in full and published as advertisement.

RoHS TEST REPORT

Report No. : B-R200831204

Date: Aug. 05, 2020

Page 9 of 17

Test item	Unit	Limit	Result		
			Conductor (13)	The glass tube (14)	PCB (15)
Dibromodiphenyl Ether	mg/kg	/	N.D.	N.D.	N.D.
Tribromodiphenyl Ether	mg/kg	/	N.D.	N.D.	N.D.
Tetrabromodiphenyl Ether	mg/kg	/	N.D.	N.D.	N.D.
Pentabromodiphenyl Ether	mg/kg	/	N.D.	N.D.	N.D.
Hexabromodiphenyl Ether	mg/kg	/	N.D.	N.D.	N.D.
Heptabromodiphenyl Ether	mg/kg	/	N.D.	N.D.	N.D.
Octabromodiphenyl Ether	mg/kg	/	N.D.	N.D.	N.D.
Nonabromodiphenyl Ether	mg/kg	/	N.D.	N.D.	N.D.
Decabromodiphenyl Ether	mg/kg	/	N.D.	N.D.	N.D.
Diisobutyl phthalate(DIBP)	mg/kg	1000	N.D.	N.D.	N.D.
Dibutyl Phthalate (DBP)	%(w/w)	1000	N.D.	N.D.	N.D.
Benzylbutyl Phthalate (BBP)	%(w/w)	1000	N.D.	N.D.	N.D.
Bis-(2-ethylhexyl) Phthalate (DEHP)	%(w/w)	1000	N.D.	N.D.	N.D.

This report is considered invalidated without the Special Seal for Inspection of the Beide (Shenzhen) Product Service Limited, This report shall not be altered, increased or deleted. The results shown in this test report refer only to the sample(s) tested. Without written approval of Beide (Shenzhen) Product Service Limited, this test report shall not be copied except in full and published as advertisement.

RoHS TEST REPORT

Report No. : B-R200831204

Date: Aug. 05, 2020

Page 10 of 17

Note:

1. mg/kg = milligram per kilogram = ppm
2. N.D. = Not Detected (<MDL)
3. N/A = Not Applicable
4. MDL = Method detection limit



This report is considered invalidated without the Special Seal for Inspection of the Beide (Shenzhen) Product Service Limited, This report shall not be altered, increased or deleted. The results shown in this test report refer only to the sample(s) tested. Without written approval of Beide (Shenzhen) Product Service Limited, this test report shall not be copied except in full and published as advertisement.

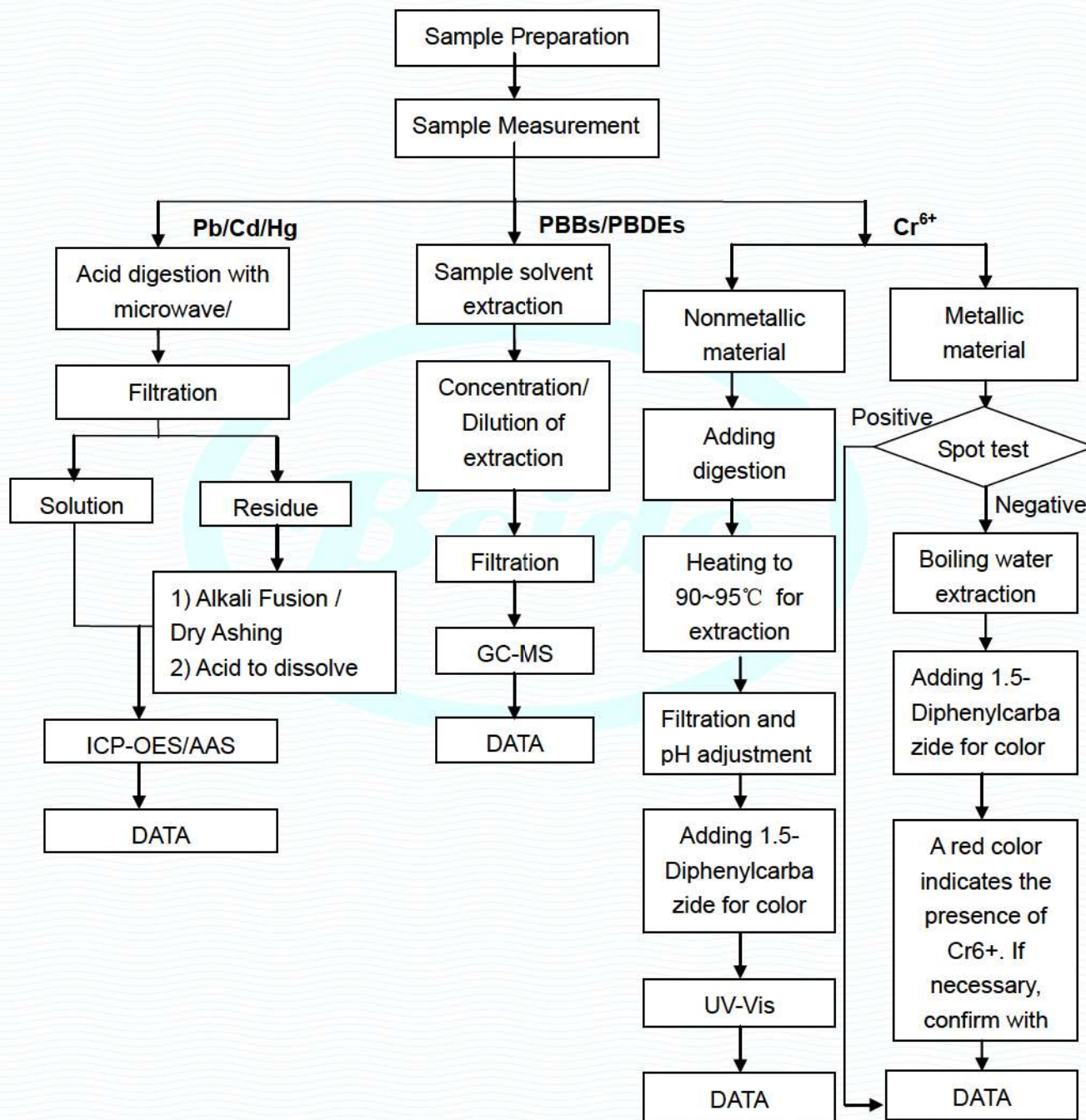
RoHS TEST REPORT

Report No. : B-R200831204

Date: Aug. 05, 2020

Page 11 of 17

RoHS Testing Flow Chart



This report is considered invalidated without the Special Seal for Inspection of the Beide (Shenzhen) Product Service Limited, This report shall not be altered, increased or deleted. The results shown in this test report refer only to the sample(s) tested. Without written approval of Beide (Shenzhen) Product Service Limited, this test report shall not be copied except in full and published as advertisement.

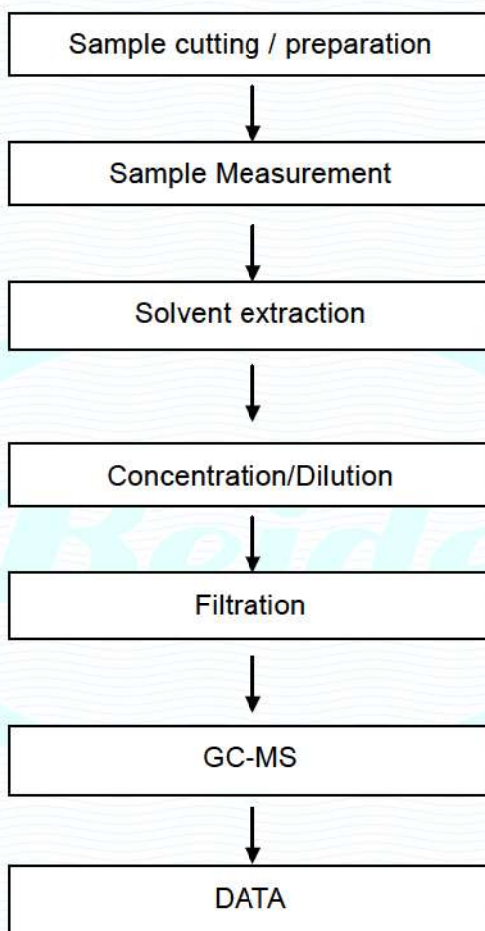
RoHS TEST REPORT

Report No. : B-R200831204

Date: Aug. 05, 2020

Page 12 of 17

Phthalates Testing Flow Chart



This report is considered invalidated without the Special Seal for Inspection of the Beide (Shenzhen) Product Service Limited, This report shall not be altered, increased or deleted. The results shown in this test report refer only to the sample(s) tested. Without written approval of Beide (Shenzhen) Product Service Limited, this test report shall not be copied except in full and published as advertisement.

RoHS TEST REPORT

Report No. : B-R200831204

Date: Aug. 05, 2020

Page 13 of 17

Photographs of Sample



This report is considered invalidated without the Special Seal for Inspection of the Beide (Shenzhen) Product Service Limited, This report shall not be altered, increased or deleted. The results shown in this test report refer only to the sample(s) tested. Without written approval of Beide (Shenzhen) Product Service Limited, this test report shall not be copied except in full and published as advertisement.

RoHS TEST REPORT

Report No. : B-R200831204

Date: Aug. 05, 2020

Page 14 of 17



This report is considered invalidated without the Special Seal for Inspection of the Beide (Shenzhen) Product Service Limited, This report shall not be altered, increased or deleted. The results shown in this test report refer only to the sample(s) tested. Without written approval of Beide (Shenzhen) Product Service Limited, this test report shall not be copied except in full and published as advertisement.

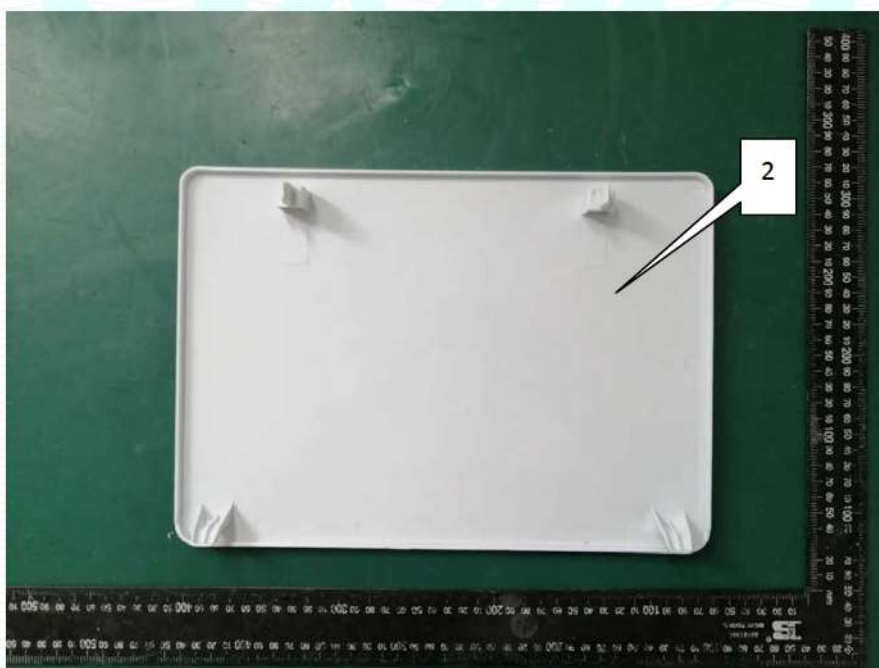
Beide (Shenzhen) Product Service Limited
6F, Bldg E, Hourui 3rd Ind Zone, Xixiang, Bao'an Dist, Shenzhen, China
Tel.: +86-755-27454498, Email: admin@szbeide.com

RoHS TEST REPORT

Report No. : B-R200831204

Date: Aug. 05, 2020

Page 15 of 17



This report is considered invalidated without the Special Seal for Inspection of the Beide (Shenzhen) Product Service Limited, This report shall not be altered, increased or deleted. The results shown in this test report refer only to the sample(s) tested. Without written approval of Beide (Shenzhen) Product Service Limited, this test report shall not be copied except in full and published as advertisement.

RoHS TEST REPORT

Report No. : B-R200831204

Date: Aug. 05, 2020

Page 16 of 17



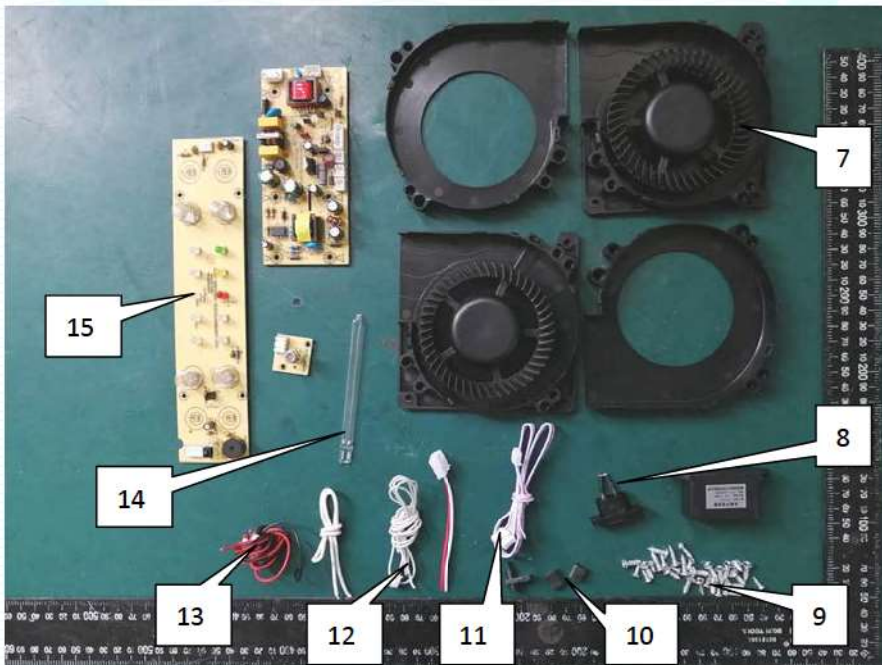
This report is considered invalidated without the Special Seal for Inspection of the Beide (Shenzhen) Product Service Limited, This report shall not be altered, increased or deleted. The results shown in this test report refer only to the sample(s) tested. Without written approval of Beide (Shenzhen) Product Service Limited, this test report shall not be copied except in full and published as advertisement.

RoHS TEST REPORT

Report No. : B-R200831204

Date: Aug. 05, 2020

Page 17 of 17



End of Report

This report is considered invalidated without the Special Seal for Inspection of the Beide (Shenzhen) Product Service Limited, This report shall not be altered, increased or deleted. The results shown in this test report refer only to the sample(s) tested. Without written approval of Beide (Shenzhen) Product Service Limited, this test report shall not be copied except in full and published as advertisement.