

BOUK-L

L120xW120xH750mm Max 14W



- LED BOLLARDS LIGHT-body is made of die-cast and extruded aluminum with Safe glass
- Finish : Mechanical and chemical anti-corrosion pre-treatment UV-resistant polyester exterior powder-coating system
- Bollards light, shielded, delineated parabolic light pattern on the pathway, directed downwards, anchorage and surface mounting in one. .

BOUK-L

L120xW120xH750mm Max 14W

DIMON
TECHNOLOGY

Technical Data

| | |
|--|--|
| Luminaire Type-安裝方式 Tipo de luminaria | • Expansion Bolt Mounting 膨脹螺栓安裝 Montaje de perno de expansión |
| Dimension-尺寸-Dimensión | • L120 x W120 x H750 mm • L120 x W120 x H1000 mm Refer to Technical Drawing 請參閱技術圖紙 Consulte el dibujo técnico |
| Power Consumption Max-燈具功率 Consumo de energía Max | • 12W • 14W |
| Input Voltage-輸入電壓-Voltaje de entrada | AC 220-240V 50/60Hz |
| LED Driver Type LED驅動款式 Tipo de controlador LED | Integrated-type LED Driver--Refer to LED driver specification 請參閱LED驅動器規格 Consulte la especificación de controlador de LED 1. ON/OFF Switch AC220-240V 50/60HZ 2. 0-10V Dimming Driver AC220-240V 50/60HZ 3. Dali Dimming Driver AC220-240V 50/60HZ |
| Control Protocol-控制協議 Protocolo de Control | 0-10V / Dali |
| Beam Angle-光束角ángulo de haz | Flat Beam 橢圓發光 Haz plano |
| Light Source Brand-光源品牌-Fuente de luz de marca | CREE |
| "Lumen Maintenance LM-80 Reported by TM-21" | L70> 60,000 hrs |
| LED Life-LED壽命-La vida del LED | >60,000 hours |
| Color Temperature -色溫 Temperatura del color | 2700K / 3000K / 4000K / 5000K / 6500K |
| Color Rendering Index-顯色指數 Índice de reproducción cromática | • >80 |
| MacAdam Ellipses Binning 麥克亞當橢圓分級 Mac Adam binning elipse | Standard Deviation Colour Matching < 3 SDCM 標準偏差配色 < 3 SDCM Coincidencia de color estándar Desviación < 3 SDCM |
| Luminaire Efficacy-燈具效率 La eficacia de la luminaria | • 100Lm/w(2700K), 100 Lm/w(3000K), 110Lm/w(4000K), • 120 Lm/w(5000K), 120 Lm/w(6500K), |
| LED Source Luminous Efficacy LED光源光效 Fuente luminosa LED Eficacia | • 130Lm/w(2700K), 130 Lm/w(3000K), 140Lm/w(4000K), • 150 Lm/w(5000K), 150 Lm/w(6500K), |
| Housing materials-外殼材料 Materiales de la carcasa | Aluminum alloy , transparent tempered glass and stainless steel screws 鋁合金, 透明鋼化玻璃和不銹鋼螺釘 Aleación de aluminio, vidrio templado transparente y tornillos de acero inoxidable. |
| Housing Color 外殼顏色 color de la carcasa | Mechanical and chemical anti-corrosion pre-treatment UV-resistant polyester exterior powder-coating system. 機械和化學防腐預處理使用防紫外線粉末塗料體 Pretratamiento mecánico y químico anticorrosión. Sistema de recubrimiento en polvo exterior de poliéster resistente a los rayos UV. • Graphite 石墨黑 Grafito RAL 9005 • Gray 灰色 Gris RAL 9006 • White 白色 Blanco RAL9010 |
| Ingress Protection-防護等級 Protección de ingreso | IP65 |
| Mech impact protection 機械衝擊保護 Protección contra impactos mecánicos | IK08 |
| Operating Temperature Range / 工作溫度範圍 Rango de temperatura de funcionamiento | -20 °C / +50 °C |
| Operating Humidity -工作濕度 Humedad de funcionamiento | 0~90%, non-condensing-不結霜 sin condensación |
| Comply Testing Standard 符合測試標準 Cumplir el estándar de prueba | LED Luminaires:LVD: EN 60598-1 / EN 60598-2-1/ IEC 62031 / EN 62471 IEC 60529 / IEC 62262 / RoHS LED Driver: IEC/EN 61347-1; IEC/EN 61347-2-13; IEC/EN 62384; IEC/EN 61000-3-2; IEC/EN 61000-3-3; IEC/EN61574; EN 55015 |
| Certification-認證-Certificación |      |

| | | |
|---------|----------|------|
| Project | Fixture# | Date |
| | | Firm |

Ordering Information

Choose the option that suits your need and write its corresponding code on the appropriate line to form the product code.

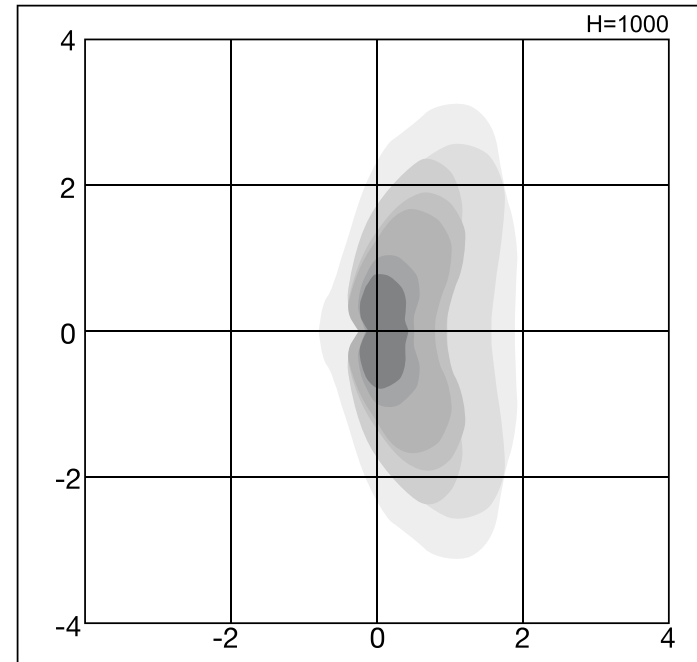
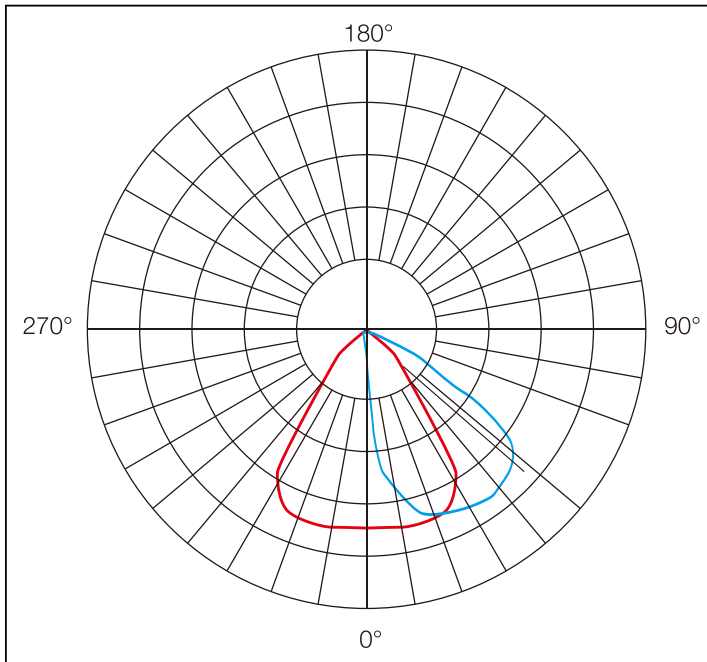
Example product code: [BOUK-L-14W](#)

BOUK-L - - _____
Power Consumption

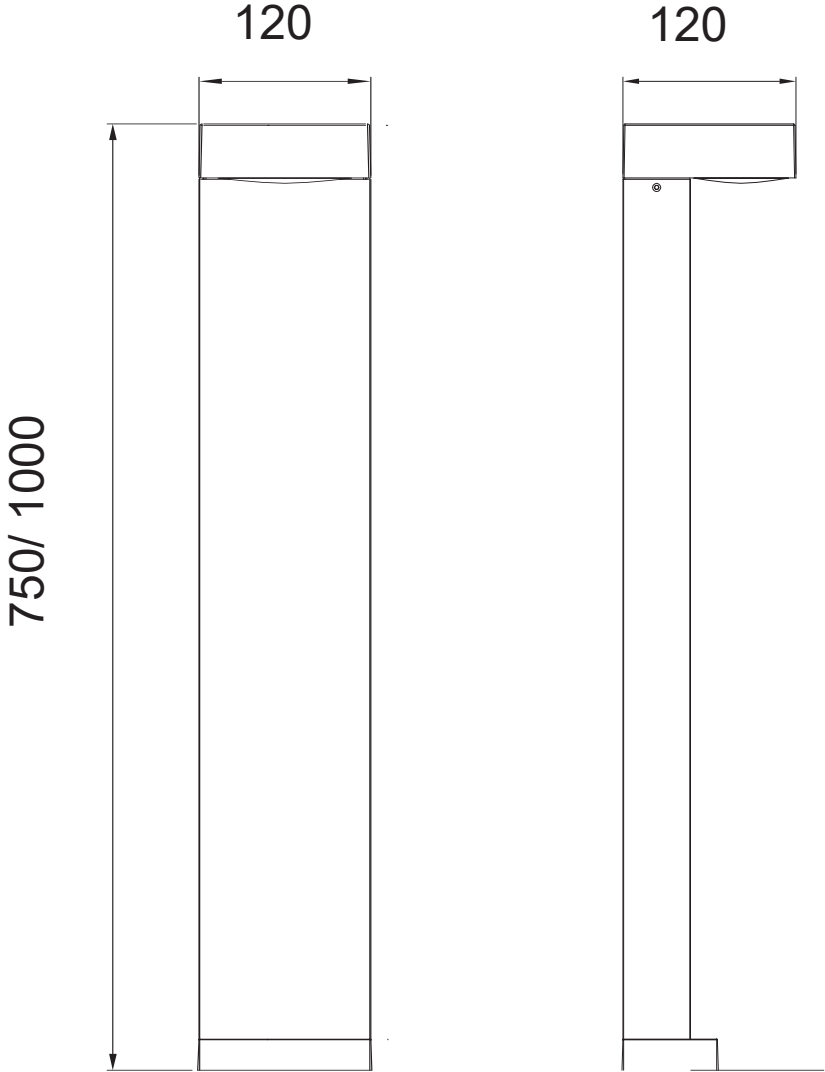
| Power Consumption | |
|---------------------|-------------|
| Code | Description |
| 12W | 12W |
| 14W | 14W |



Beam Angle



Technical Drawing



Unit: mm