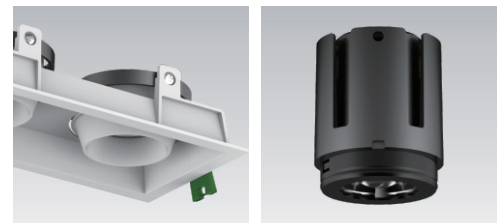
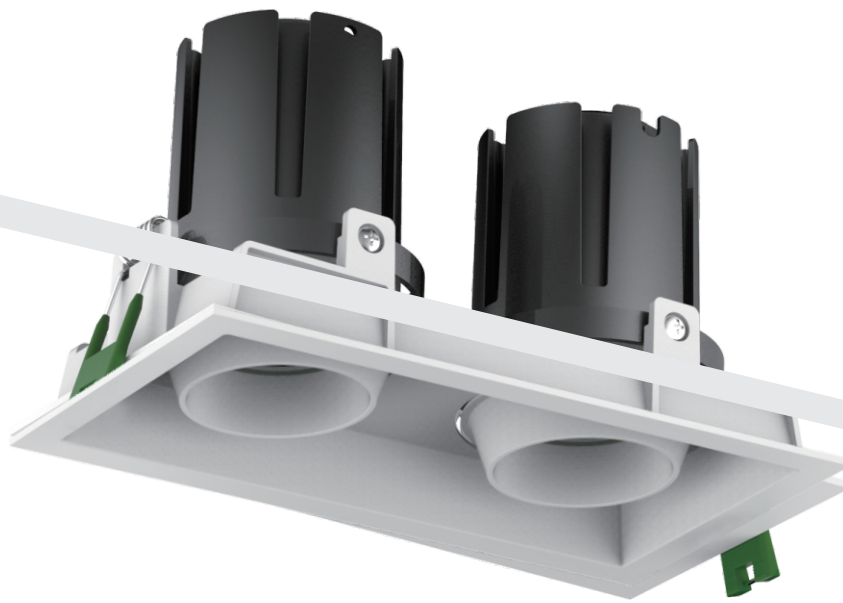








## DOOSAN-S

5W-64W IP20



Housing: die-cast aluminium, powder-coated, designed as heat sink. Anti-glare reflector and diffusor system made of PMMA. LED module: high-power CREE LEDs Array, CRI>80, LM-80 performance approval >50,000 hours.

## Technical Data

Luminaire Type- 安裝方式 Tipo de luminaria	Recessed Mount Type : Tilted-Angle- Type (20° tilt and 355° rotation) , 嵌入式筒燈 : 可調角度類型 (上下調角20° 和355° 旋轉) Tipo de montaje empotrado: tipo de ángulo inclinado (inclinación de 20 ° y rotación de 355 °)		
Dimension-尺寸-Dimensión	• Dia 75x H: 70mm • Dia 90x H: 71mm • Dia 80x H: 94mm • Dia 95x H: 116mm • Dia 130x H:139mm	75x75x H:70mm 90x90x H:71mm 90x90x H:94mm 95x95x H:116mm 130x130x H:139mm	140x75x H:71mm 175x90x H:71mm 175x90x H:94mm 205x95x H:116mm 260x130x H:139mm
Cut off Dimension-開孔尺寸-Cortar Dimensión	Refer Technical Drawing 請參閱技術圖紙 Consulte el dibujo técnico		
Input Voltage-輸入電壓-Voltaje de entrada	AC100-240V 50/60HZ		
Power Consumption Max-燈具功率 Consumo de energía Max	• 1x 6W @Dia 75x H: 70mm • 1x10W @Dia 75x H: 70mm • 2x10W @140x75x H:71mm • 1x12W @Dia 80x H: 94mm • 2x12W @175x90x H:94mm • 1x15W @Dia 80x H: 94mm • 2x15W @175x90x H:94mm • 1 x 20W @Dia 95x H: 116mm • 2 x 20W @ 205x95x H:116mm • 1 x 24W @Dia 95x H: 116mm • 2 x 24W @ 205x95x H:116mm • 1x28W @ Dia 130x H:139mm • 2 x28W @ 260x130x H:139mm • 1x32W @ Dia 130x H:139mm • 2 x32W @ 260x130x H:139mm	@ 75x75x H:70mm @175x90x H:71mm @ 75x75x H:70mm @175x90x H:71mm @90x90x H:94mm @90x90x H:94mm @95x95x H:116mm @95x95x H:116mm @130x130x H:139mm @130x130x H:139mm	@ Dia 90x H: 71m @ 90x90x H:71mm @ Dia 90x H: 71m @ 90x90x H:71mm
LED Driver Type LED驅動款式 Tipo de controlador LED	Remote-type LED Driver--Refer to LED driver specification 請參閱LED驅動器規格 Consulte la especificación de controlador de LED 1. ON/OFF Switch AC100-240V 50/60HZ 2. 1-10V Dimming Driver AC100-240V 50/60HZ 3. Dali Dimming Driver AC100-240V 50/60HZ (0-100% Dimming)		
LED Driver Features驅動特性 Funciones del controlador de LED	POWER FACTOR : PF>0.90 @ Full Load TOTAL HARMONIC DISTORTION: THD< 20%		
Control Protocol-控制協議 Protocolo de Control	0-10V / Dali		
Beam Angle光束角 ángulo de haz	15° 20° 24° 35° 38° 50°		
Light Source Brand-光源品牌-Fuente de luz de marca	CREE - ( Photobiological safety-IEC 62471 'Risk Group 1' (low risk) )		
"Lumen Maintenance LM-80 Reported by TM-21"	L80(10k) > 53,000 hrs L70(10k) > 60,000 hrs		
LED Life-LED壽命-La vida del LED	>60,000 hours		
Color Temperature -色溫 Temperatura del color	2700K / 3000K / 4000K / 5000K / 6500K		
Color Rendering Index-顯色指數 Índice de reproducción cromática	>80 >90		
MacAdam Ellipses Binning 麥克亞當橢圓分級 Mac Adam binning elipse	Standard Deviation Colour Matching < 3 SDCM 標準偏差配色 < 3 SDCM Coincidencia de color estándar Desviación < 3 SDCM		
Luminaire Efficacy 燈具效率 La eficacia de la luminaria	90 Lm/w(2700K), 120 Lm/w(5000K),	100 Lm/w(3000K), 120 Lm/w(6500K),	110 Lm/w(4000K),
LED Source Luminous Efficacy LED光源光效 Fuente luminosa LED Eficacia	120Lm/w(2700K), 150 Lm/w(5000K),	130 Lm/w(3000K), 150 Lm/w(6500K),	140 Lm/w(4000K),
Housing materials-外殼材料 Materiales de la carcasa	Die-cast aluminum and Polycarbonate diffuser 壓鑄鋁和PC擴散罩 Aluminio fundido a presión y difusor de policarbonato		
Housing Color 外殼顏色 color de la carcasa	Matte white 啞光白色 Blanco mate Matte black 啞光黑色 Matte black		
Ingress Protection-防護等級 Protección de ingreso	IP20		
Operating Humidity -工作濕度 Humedad de funcionamiento	0~90%, non-condensing-不結霜 sin condensación		
Operating Temperature Range / 工作溫度範圍 Rango de temperatura de funcion amiento	-30 °C / +50 °C		
Comply Testing Standard 符合測試標準 Cumplir el estándar de prueba	LED Luminaires: IEC/EN 60598-1 ; IEC/EN 60598-2-2 ; IEC/ EN62493 ; IEC/EN 62301 ; IEC TR 62778 & IEC 62471 ;ROHS LED Driver: EN 55015 / IEC 61000-3-2 / IEC 61347-1 / IEC 61347-2-13 / IEC 61547		
Certification-認證-Certificación	     		

Project	Fixture#	Date
		Firm

## Ordering Information

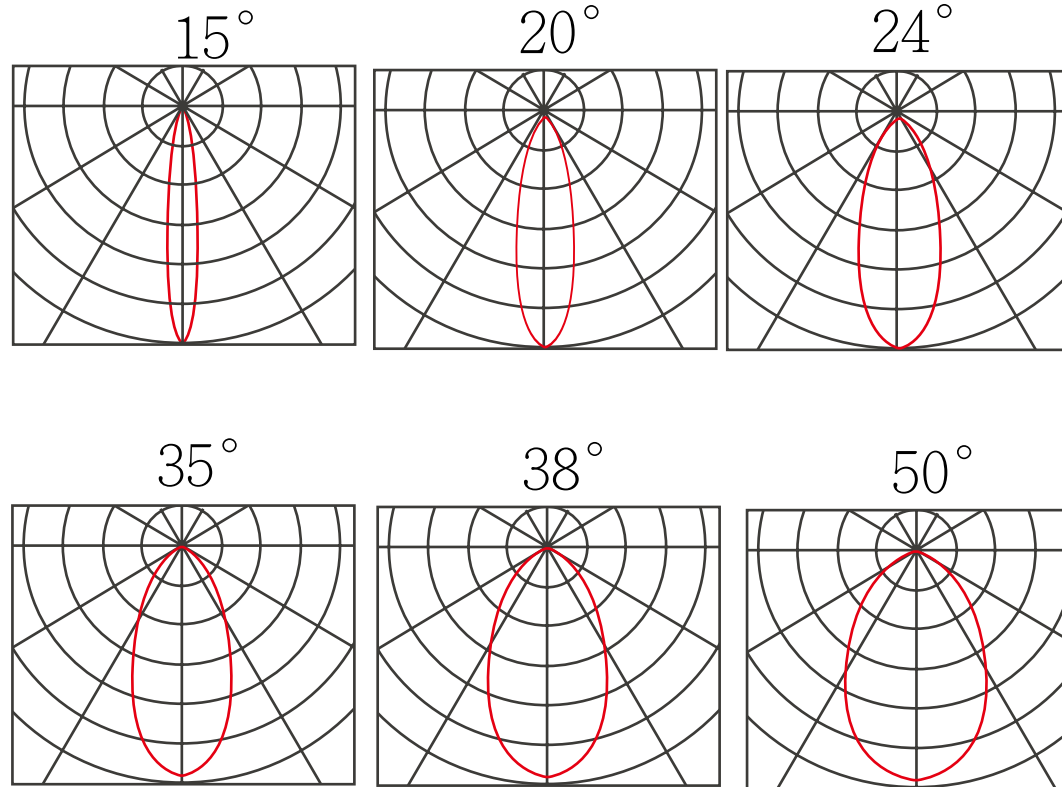
Choose the option that suits your need and write its corresponding code on the appropriate line to form the product code.

Example product code: [DOOSAN-S20W](#)

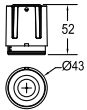
DOOSAN-S - -  
\_\_\_\_\_  
Power Consumption

Power Consumption	
Code	Description
<a href="#">6W</a>	1x 6W @Dia 75x H: 70mm @ 75x75x H:70mm @ Dia 90x H: 71m @ 90x90x H:71mm
<a href="#">12W</a>	2 x 6W @140x75x H:71mm @175x90x H:71mm
<a href="#">10W</a>	1x10W @Dia 75x H: 70mm @ 75x75x H:70mm @ Dia 90x H: 71m @ 90x90x H:71mm
<a href="#">20W</a>	2x10W @140x75x H:71mm @175x90x H:71mm
<a href="#">12W</a>	1x12W @Dia 80x H: 94mm @90x90x H:94mm
<a href="#">24W</a>	2x12W @175x90x H:94mm
<a href="#">15W</a>	1x15W @Dia 80x H: 94mm @90x90x H:94mm
<a href="#">30W</a>	2x15W @175x90x H:94mm
<a href="#">20W</a>	1 x 20W @Dia 95x H: 116mm @95x95x H:116mm
<a href="#">40W</a>	2 x 20W @ 205x95x H:116mm
<a href="#">24W</a>	1 x 24W @Dia 95x H: 116mm @95x95x H:116mm
<a href="#">48W</a>	2 x 24W @ 205x95x H:116mm
<a href="#">28W</a>	1x28W @ Dia 130x H:139mm @130x130x H:139mm
<a href="#">54W</a>	2 x28W @ 260x130x H:139mm
<a href="#">32W</a>	1x32W @ Dia 130x H:139mm @130x130x H:139mm
<a href="#">64W</a>	2 x32W @ 260x130x H:139mm

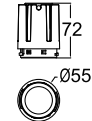
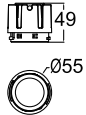
# BEAM ANGLE



Technical Drawing

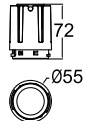
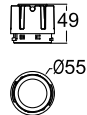


**Max 10W  
LED Modular**



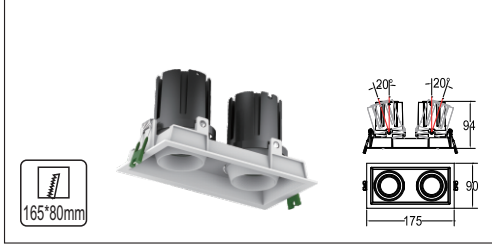
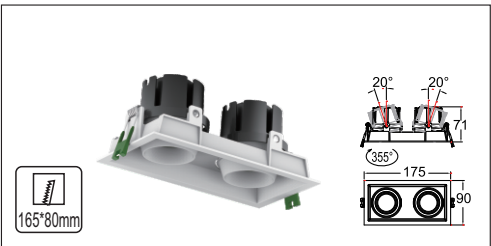
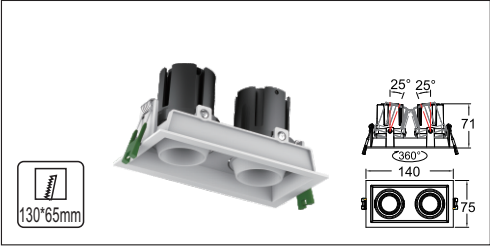
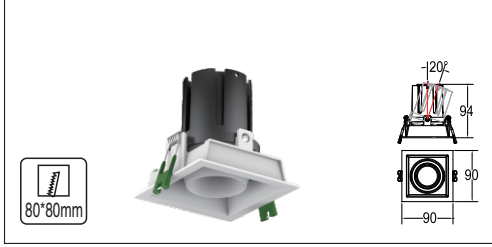
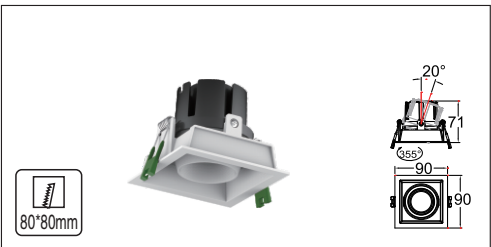
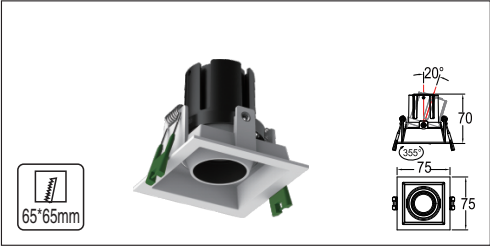
**Max 9W LED  
Modular**

**Max 15W LED  
Modular**



**Max 9W LED  
Modular**

**Max 15W LED  
Modular**



Technical Drawing



**Max 24W LED  
Modular**



**Max 32W LED  
Modular**

Unit: mm