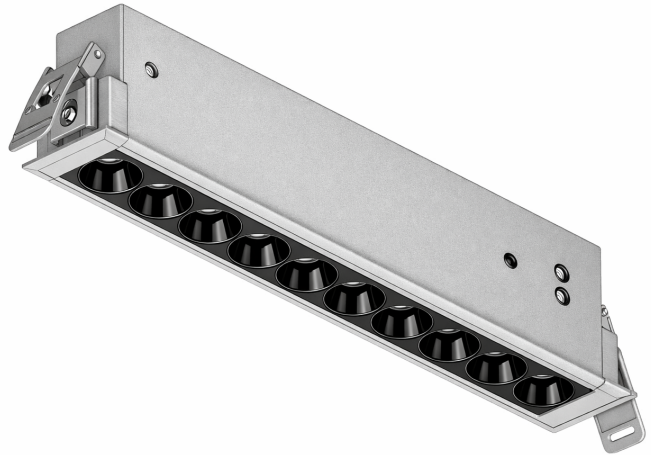


## DUGORA-G3

Super Slim W: 29mm 20W Max IP20



Recessed linear light

Adopt high lumen efficiency SMD LED with even light output, aluminum light body providing excellent thermal management.

LED module: SMD LEDs, CRI>80, LM-80 performance approval >50,000 hours.

Integrated Type 0-10V, DALI, and LED constant current control gear.

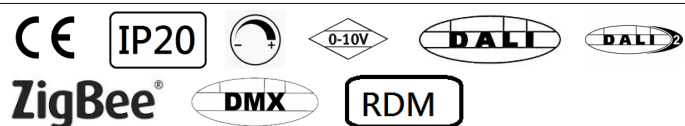
# DUGORA-G3

## Super Slim W: 29mm 20W Max IP20

### Technical Data

Luminaire Type-安裝方式 Tipo de luminaria	Recessed Mounting / 嵌入式安裝 / Montaje empotrado	
Dimension-尺寸-Dimensión	L: 212 x W: 29 x H: 65 mm	Cut off: 207x25mm
Power Consumption Max-燈具功率 Consumo de energía Max	12W 16W 18W 20W	
Input Voltage-輸入電壓-Voltaje de entrada	AC220-240V 50/60HZ	
Power Factor / 功率因數/Factor de potencia	PF>0.9	
Total Harmonic Distortion/總諧波失/Distorsión armónica total	THD<20%	
LED Driver Type LED驅動款式 Tipo de controlador LED	Remoted-type LED Driver--Refer to LED driver specification 請參閱LED驅動器規格 Consulte la especificación de controlador de LED 1. Integrated ON/OFF Switch AC220-240V 50/60HZ 3. Remoted 1-10V Dimming Driver AC220-240V 50/60HZ 4. IntegratedDali Dimming Driver AC220-240V 50/60HZ 5. Remoted DMX Driver AC220-240V 50/60HZ 6. Remoted RDM Driver AC220-240V 50/60HZ	
Control Protocol-控制協議/Protocolo de Control	1-10V / Dali / DMX 512 / RDM / ZIGBEE Wireless Control	
Beam Angle Combination 光東角組合 Combinación de ángulo de haz	24° 36° 45°	
Light Source Brand-光源品牌-Fuente de luz de marca	OSRAM	
"Lumen Maintenance LM-80 Reported by TM-21"	L70 > 54000 hrs	
LED Life-LED壽命-La vida del LED	>60,000 hours	
Color Temperature -色溫 Temperatura del color	2700K / 3000K / 3500K / 4000K / 5000K / 6500K	
Color Rendering Index-顯色指數 Índice de reproducción cromática	> 90	
MacAdam Ellipses Binning 麥克亞當橢圓分級 Mac Adam binning ellipse	Standard Deviation Colour Matching < 3 SDCM標準偏差配色< 3 SDCM Coincidencia de color estándar Desviación < 3 SDCM	
Luminaire Efficacy燈具效率 La eficacia de la luminaria	90 Lm/w(2700K), 90 Lm/w(3000K&3500K),100 Lm/w(4000K), 100 Lm/w(5000K & 6500K)	
LED Source Luminous EfficacyLED光源光效 Fuente luminosa LED Eficacia	130 Lm/w(2700K), 130 Lm/w(3000K&3500K),140 Lm/w(4000K), 150 Lm/w(5000K & 6500K)	
Housing materials-外殼材料-Materiales de la carcasa	Die-casted Aluminium and Polycarbonate Reflector or Die-casted Aluminium and Polycarbonate Lens 壓鑄鋁和PC反射器 或壓鑄鋁和PC透鏡	
Housing Color-外殼顏色-color de la carcasa	Matte White / Matte black 啞光白色 / 啞光黑色 Blanco mate / Matte black	
Reflector Color 反光板顏色/Color del reflector	Chrom Black/ Specular 鉻黑 / 亮銀色	
Ingress Protection-防護等級/Protección de ingreso	IP20	
Operating Humidity -工作濕度 Humedad de funcionamiento	0~90%, non-condensing-不結霜 sin condensación	
Operating Temperature Range / 工作溫度範圍 Rango de temperatura de funcionamiento	-30 °C / +50 °C	
Comply Testing Standard 符合測試標準 Cumplir el estándar de prueba	LED Luminaries: IEC 60598-1; IEC 60598-2-1;IEC62471;IEC 62031; IEC62493 ; IEC 62471 EMC: EN55015 ; IEC/EN 61000-3-2; IEC/EN 61000-3-3;IEC/EN61574 ; RoHS LED Driver: IEC/EN 61347-1; IEC/EN 61347-2-13; IEC/EN 62384; IEC/EN 61000-3-2; IEC/EN 61000-3-3;IEC/EN61574;EN 55015 ; IEC /EN 62384	

Certification-認證-Certificación



Project	Fixture#	Date
		Firm

## Ordering Information

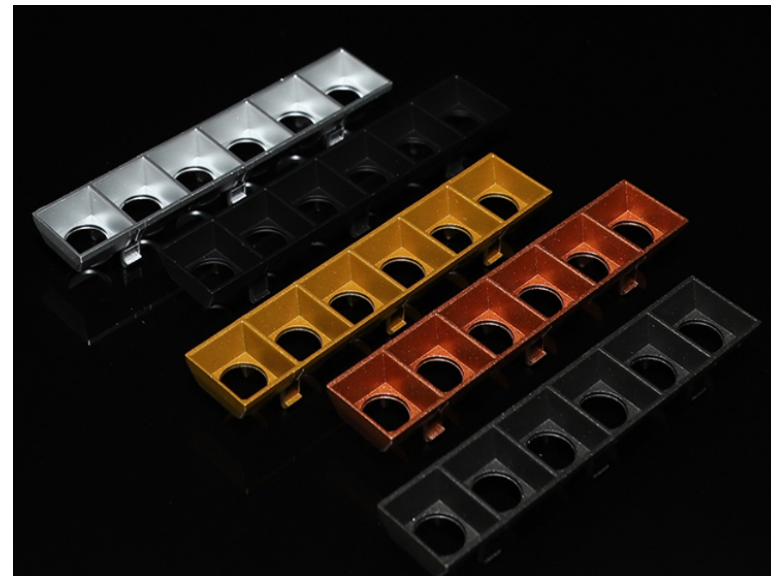
Choose the option that suits your need and write its corresponding code on the appropriate line to form the product code.

Example product code: [DUGOURA-20W](#)

DUGORA-G3 - -                       
Power Consumption

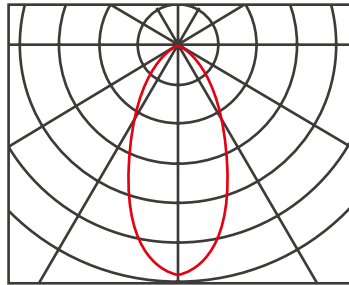
Power Consumption	
Code	Description
<a href="#">12W</a>	12W
<a href="#">16W</a>	16W
<a href="#">18W</a>	18W
<a href="#">20W</a>	20W

### Custom-made reflector

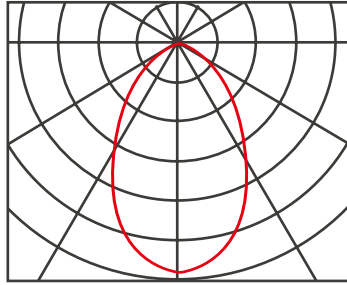


# BEAM ANGLE

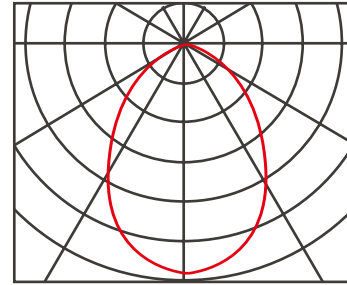
24°



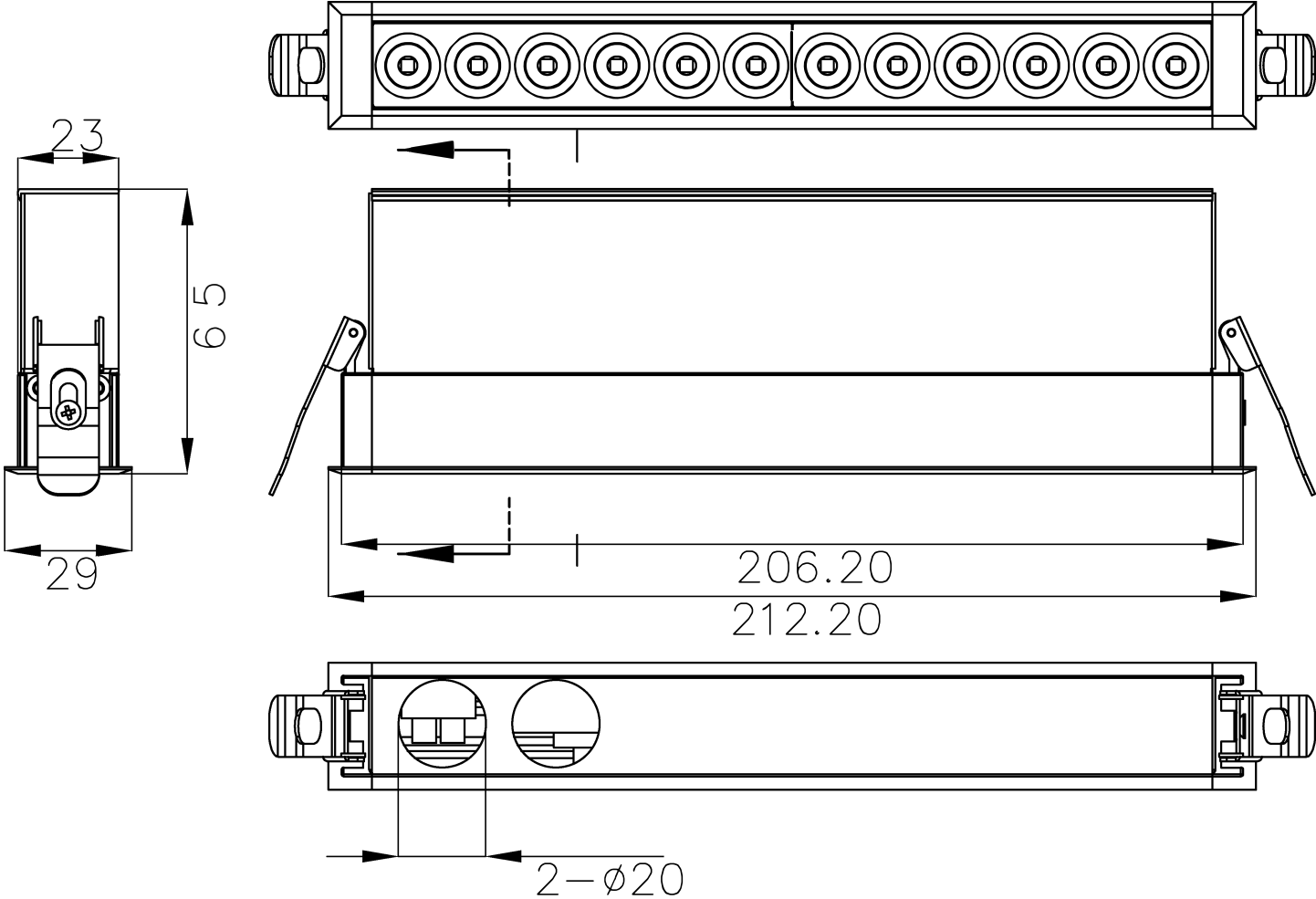
36°



45°



Technical Drawing



Die-casted Aluminum  
Polycarbonate Reflector

Accessories : Reflector



Specular



Chrome Black

Unit: mm