

HANNAH@Steel-Grating-Fence 88

Air conditioning equipment platform



- Air conditioning equipment platform
- GSM U Section 60x65x5mm
- GSM L Section PLATE 50x210x5mm
- Fixed on the concrete with M10 HILTI Anchor Bolt
- STEEL GRATING OF 50x50x2mm GMS.
- Hot Dip Galvanised Steel-BS EN ISO 1461:2009
- Painting System with AkzoNobel acrylic polyurethane RAL 9006 Printing for 10 years durability.

HANNAH@Steel-Grating-Fence

88

Air conditioning equipment platform

Technical Data

Major Material

- GSM U Section 60x65x5mm
- GSM L Section PLATE 50x210x5mm
- Fixed on the concrete with M10 HILTI Anchor Bolt
- STEEL GRATING OF 50x50x2mm GMS.
- Hot Dip Galvanised Steel-BS EN ISO 1461:2009
- Painting System with AkzoNobel acrylic polyurethane RAL 9006 Printing for 10 years durability.

Structure Materials And Finishes

- Hot Dip Galvanised Steel-BS EN ISO 1461:2009
- Other Painting Color Option : White RAL 9003 , Grey RAL 9006 or Matte Black RAL 9005
- Painting System with AkzoNobel acrylic polyurethane Printing for 10 years durability.

Certification



UK
DESIGN



Project	Fixture#	Date
		Firm

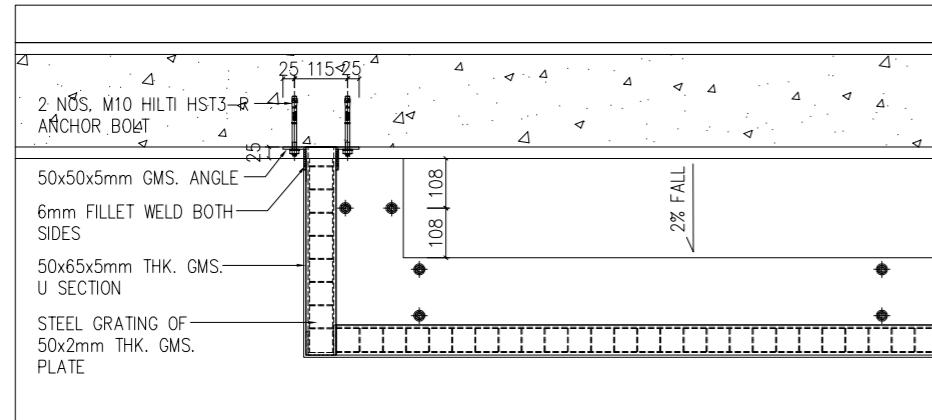


Ordering Information

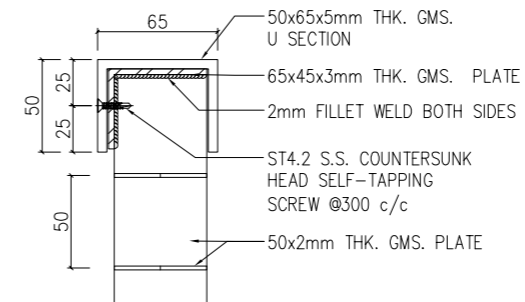
Choose the option that suits your need and write its corresponding code on the appropriate line to form the product code.

Example product code:

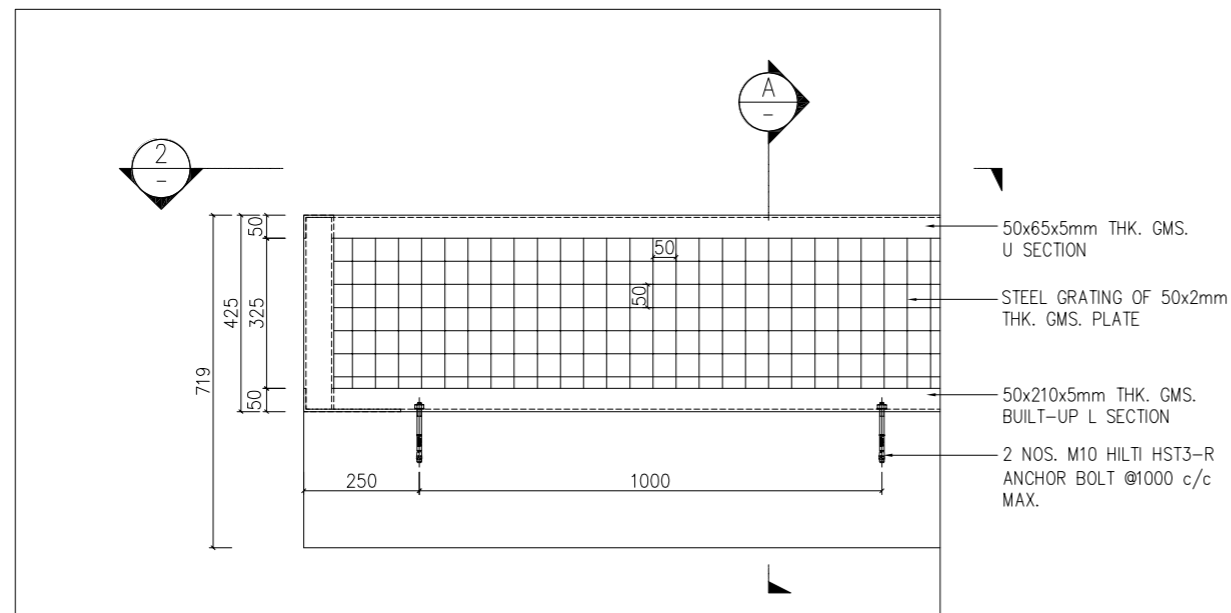
HANNAHATSTEEL-GRATING-FENCE-88 -



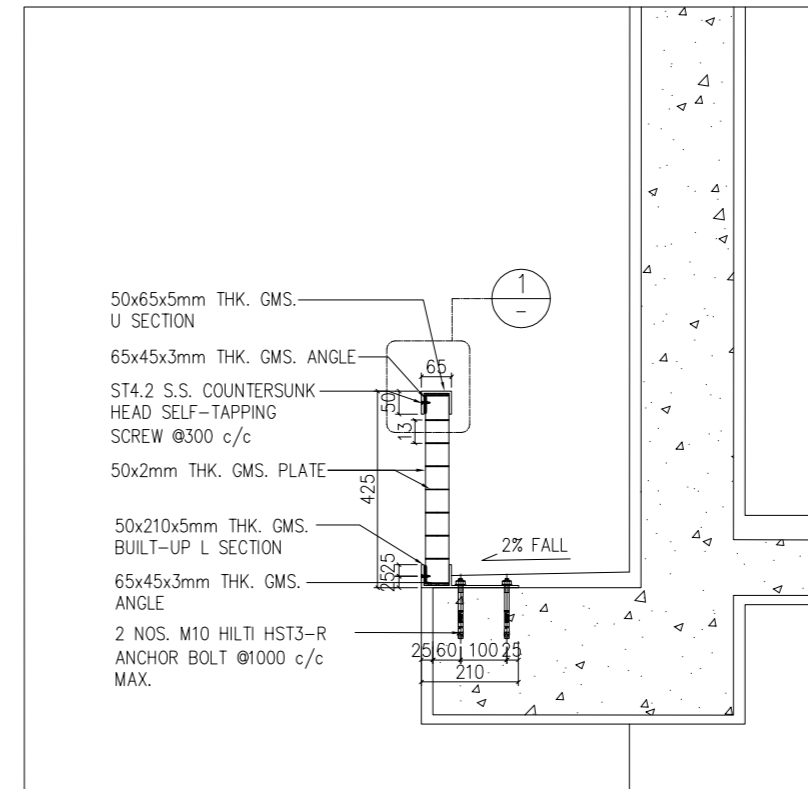
1 HANNAH@steel-grating-fence 88 TYPICAL PLAN
SCALE 1:8



1 DETAIL
SCALE 1:2



2 HANNAH@steel-grating-fence 88 TYPICAL ELEVATION
SCALE 1:8



A SECTION
SCALE 1:8

Drawing Status :

Ref NO.:

Client

Management:

Supplier:

DIMON
Technology

DIMON Technology Ltd.

Tel: 00852-3916 5876

Fax: 00852-21203398

Http://www.dimontechnology.com

E-mail:gary@dimontechnology.com

Project:

Job Title:

HANNAH@steel-grating-fence 88

Drawing Name:

RAILING
ELEVATION, PLAN AND DETAILS

Drawing NO.: RL-008

Drawing Scale: AS SHOW

Drawing Date: 2021/01/31

Drawing: Cai

Collate: Joyi

Auditing: Gray Hui

Drawing Version: 1