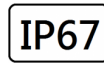
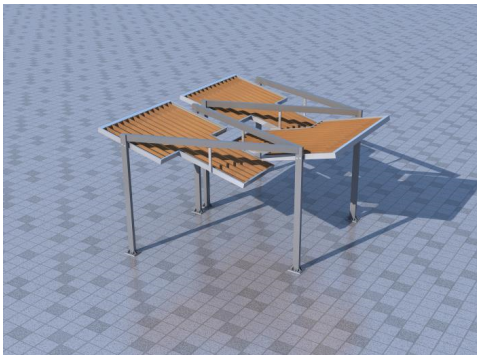
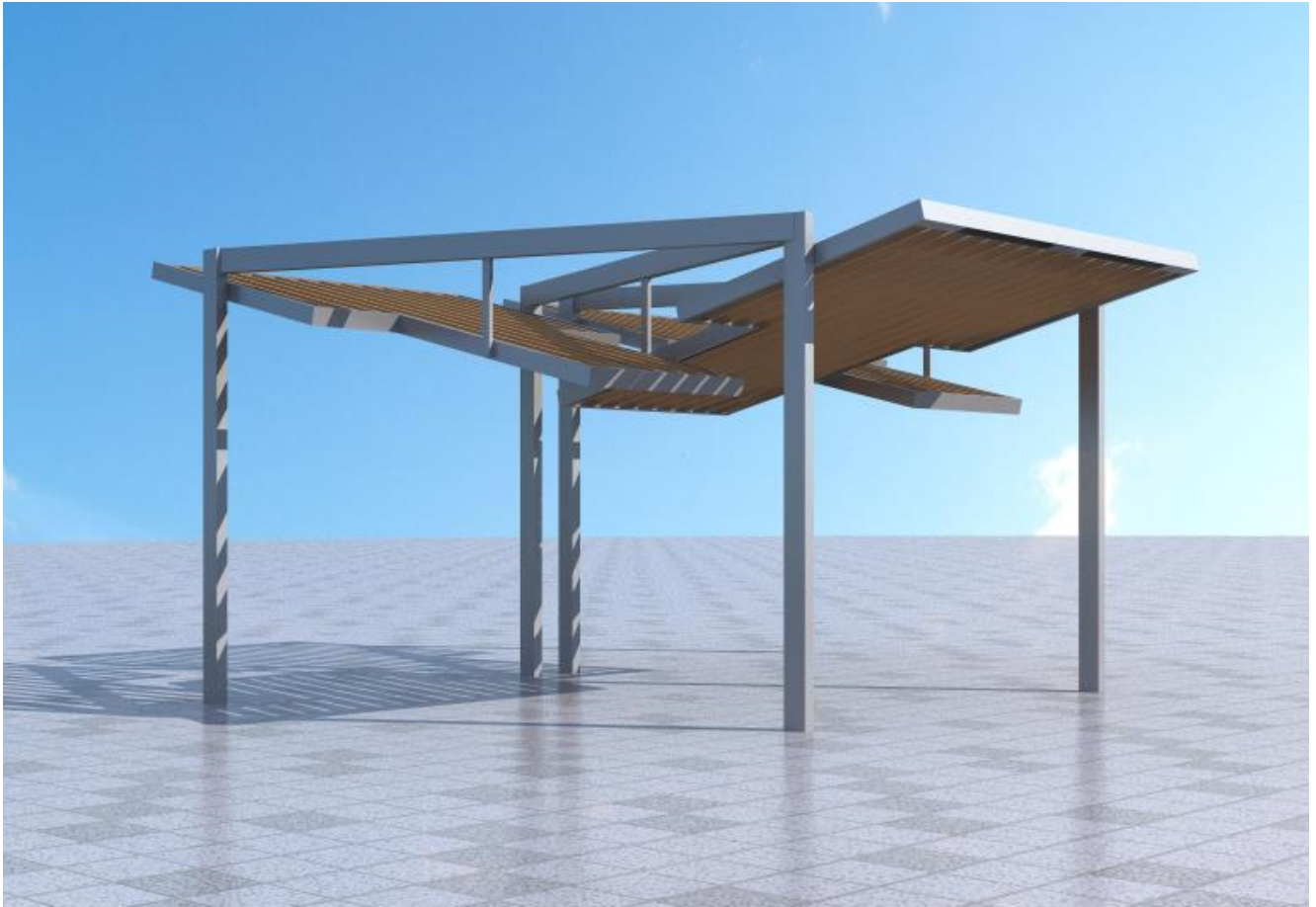


**HANNAH @ CHLOE**



Modular Pergola Cross Over Lighting



- Modular pergola Cross Over Lighting which made by Autoclaved Pine Wood Ceiling with Stainless-steel Frame Grade 316 and Hot Dip Galvanised Steel Supporting Pole with AkzoNobel acrylic polyurethane RAL9006 Painting for 10 years durability.
- Comply for BS EN40 and wind pressure 3.1kPa (72m/s) for the Height of the building is less than 250m
- It is integrated with LED Lighting System with Asymmetric light distribution to make light effect more comfortable under Pergola
- Moduar Pergola can help you create and design beautiful looking pergolas, usually some stylish structure used often to make the outside of buildings more appealing.It can be used to increase the boundary of living space or a place to enjoy.

## Technical Data

Materials and finishes of pergola	<ul style="list-style-type: none"> <li>Supporting structure made of hot-dip galvanised steel profiles - BS EN ISO 1461: 2009</li> <li>Steel Material Grade: S-275 or Q345</li> <li>Main Structure Size : Refer to Drawing</li> <li>Forked Mast Structure Size: Refer to Drawing</li> <li>Maintenance Door for LED Lighting control in side</li> <li>Dimension:Refer to Drawing</li> </ul>
Cover Materials And Finishes	<ul style="list-style-type: none"> <li>Cover: Autoclave Pine-Green with Stainless-Steel Frame Grade 316</li> <li>Cover: Autoclave Pine-Brown with Stainless-Steel Frame Grade 316</li> </ul>
Structure Materials And Finishes	<ul style="list-style-type: none"> <li>Hot Dip Galvanised Steel with AkzoNobel acrylic polyurethane RAL 9006 Printing for 10 years durability.</li> <li>Other Painting Color Option : White RAL 9003 , Grey RAL 9006 or Matte Black RAL 9005</li> <li>Painting System BS EN ISO 1461: 2009</li> </ul>
Pergola Structure Comply Standard	<ul style="list-style-type: none"> <li>Hong Kong Building construction regulations chapter 123.2012</li> <li>Code of practice for structural use of steel Hong Kong and Macau</li> <li>Code of Practice on Wind Effects , Macau 2008</li> <li>Basic wind Pressure : 3.1kPa (Wind Speed 72m/s)</li> <li>Design Wind Pressure : 2 x3.1 kPa =6.2kPa</li> <li>Welding consumables BS EN ISO 2560:2005</li> <li>Bolt &amp; Screw Grade : A4-70 Stainless Steel BS EN ISO 3506</li> <li>Ordinary bolts material grad 8.8 BS 4190 / BS 3692</li> </ul>
LED Luminaire Surface Linear Light General Specification QTY: 8 set per Pergola	<ul style="list-style-type: none"> <li>Power: 320W LED System 7 sets x 40W LED Linear Light and 2 set x 20W LED Linear Light</li> <li>Input : AC100-240V 50/60Hz</li> <li>Total Luminaire luminous flux: 36896 lm</li> <li>Power Factor : 0.96</li> <li>Extruded Aluminium S6063 alloy body with low copper content</li> <li>Nano Ceramic surface conversion, resistant to corrosive environment. Luminaire primarily coated with epoxy resin and top coated with UV stabilized polyester powder and cured in digital temperature controlled chamber at 200°C.</li> <li>Protection: IP67</li> <li>IK Rating: Protection against mechanical impact IK10</li> <li>Impact resistant safety tempered glass cover.</li> <li>Color: Black RAL9005 / Graphite RAL 7024 / Dark Gray RAL 7021 / Aluminium Silver RAL 9006 / White</li> <li>LED Luminaries: LVD: IEC 60598-1; IEC 60598-2-1;IEC62471;IEC 62031; IEC62471</li> <li>LED Driver: IEC/EN 61347-1; IEC/EN 61347-2-13; IEC/EN 62384; IEC/EN 61000-3-2; IEC/EN 61000-3-3;IEC/EN61574;EN 55015 ; IEC /EN 62384</li> </ul>

Certification-認證-Certificación



Project	Fixture#	Date
		Firm



## Ordering Information

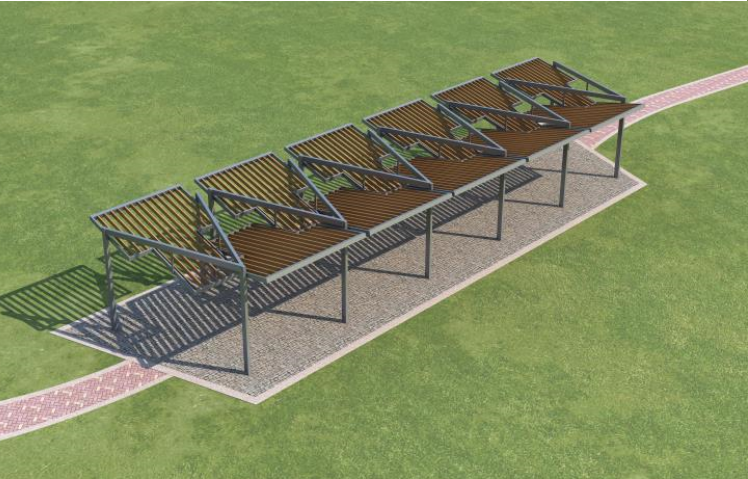
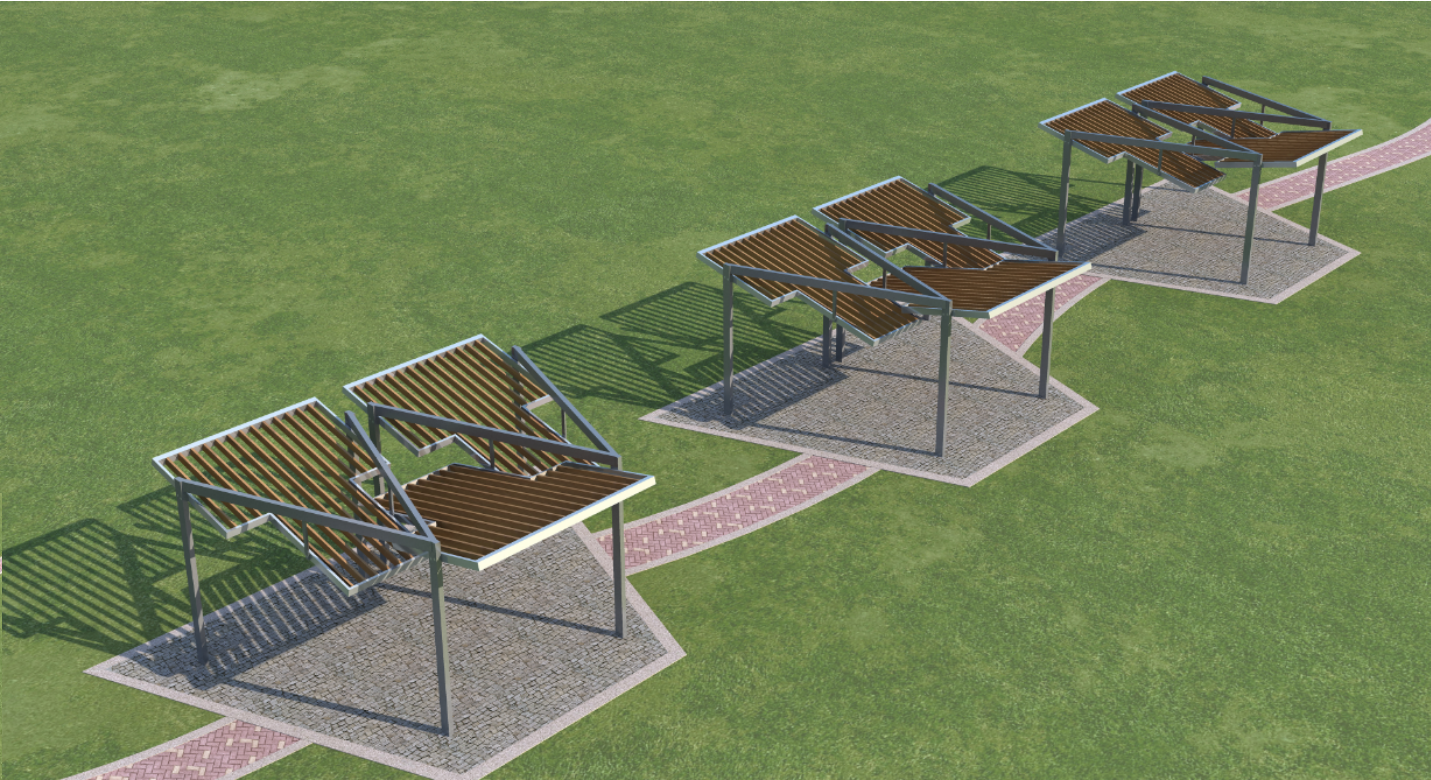
Choose the option that suits your need and write its corresponding code on the appropriate line to form the product code.

Example product code: [HANNAH & CHLOE](#)

HANNAH-AT-CHLOE -

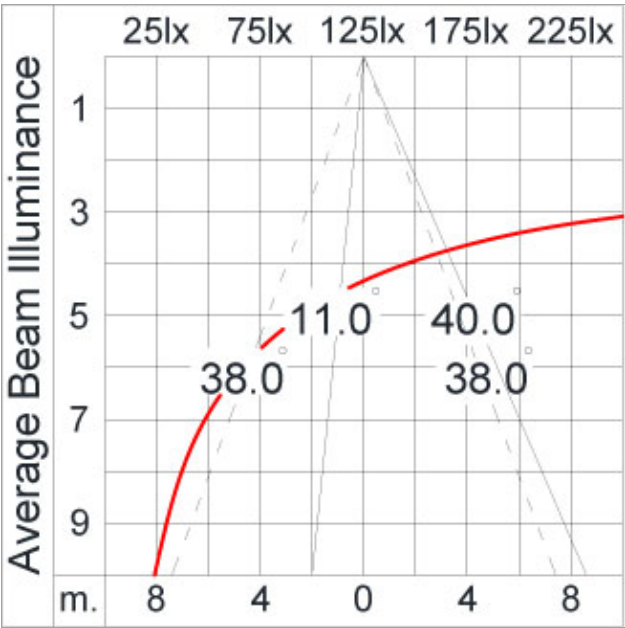
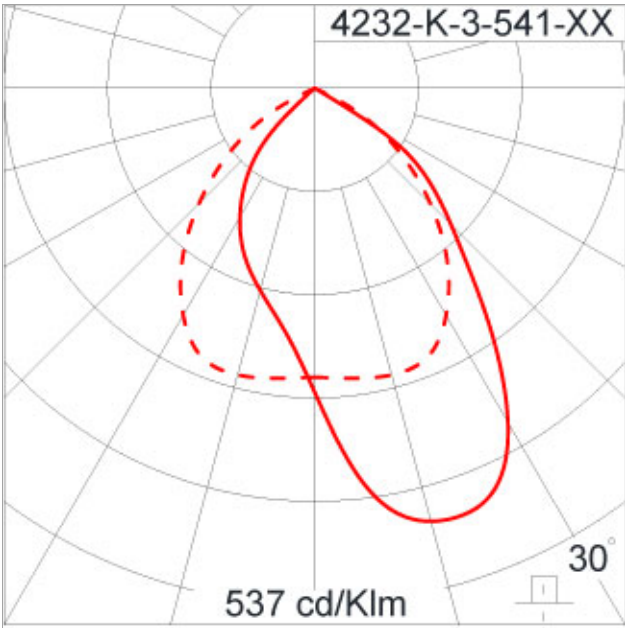


# HANNAH @ CHLOE



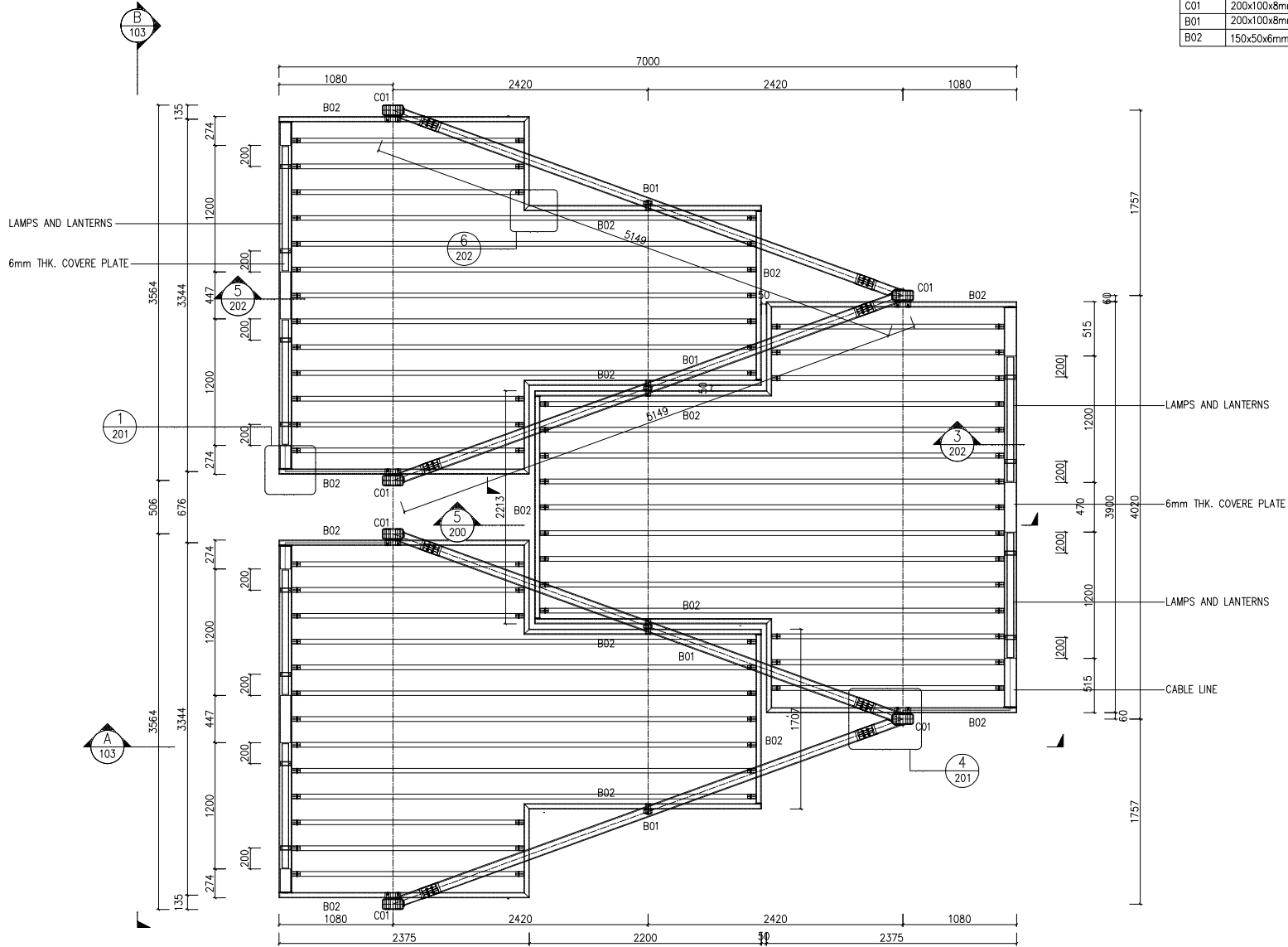


BEAM ANGLE



# HANNAH @ CHLOE

MUMBER	MEMBER SIDE	COLOR
C01	200x100x8mm THK. GMS. RHS.	RAL9006
B01	200x100x8mm THK. GMS. RHS.	RAL9006
B02	150x50x6mm THK. S.S. RHS.	



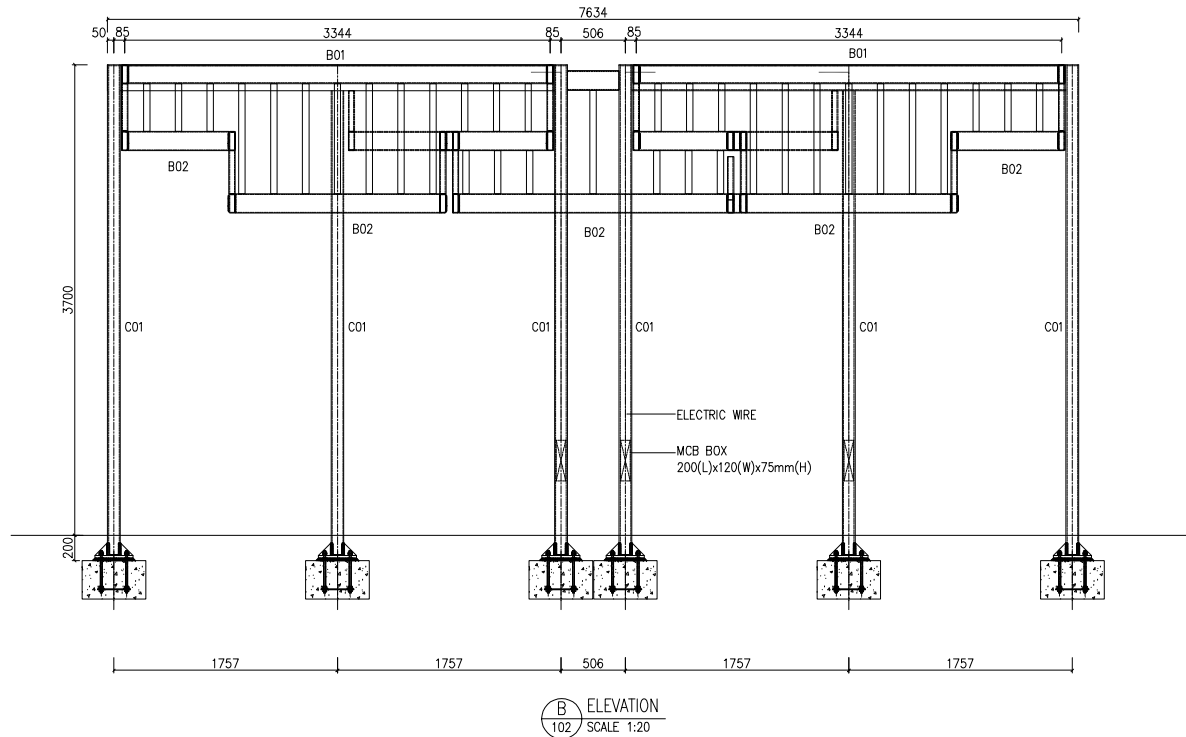
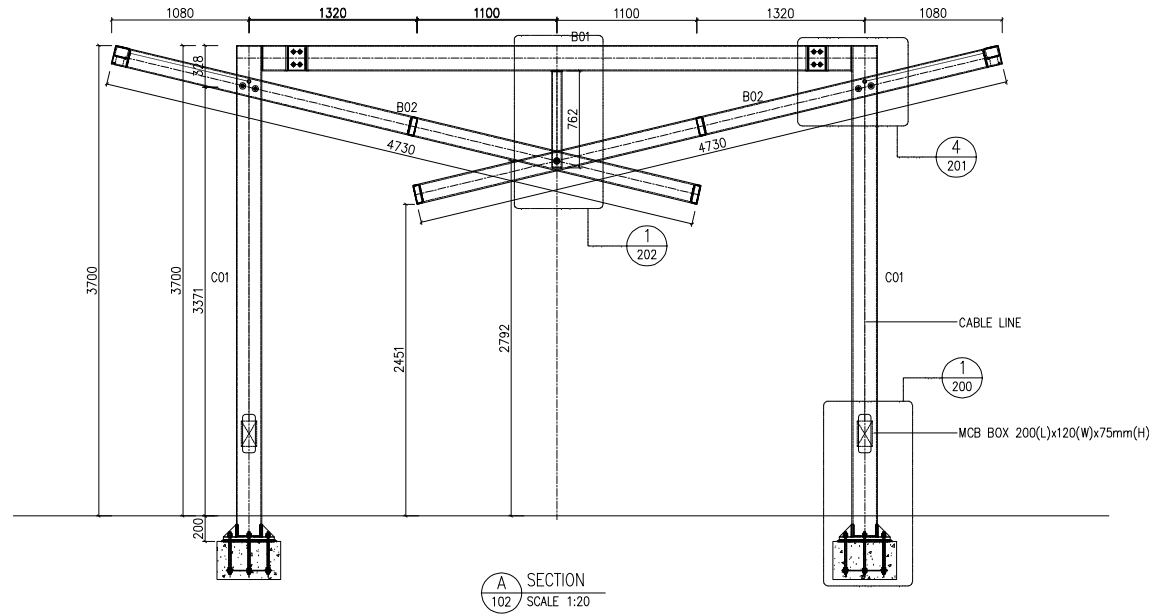
1 PLAN OF COVERED WALKWAY  
SCALE 1:20

<b>KEY PLAN</b>
Drawing Status :
Ref NO.:
Client
Management:
Supplier:  <div style="text-align: center;"> <h2>DIMON</h2> <p>Technology</p> <p>DIMON Technology Ltd.            Tel: 00852-3916 5876            Fax: 00852-21203398  <a href="http://www.dimontechnology.com">Http://www.dimontechnology.com</a>            E-mail:gary@dimontechnology.com</p> </div>
Project:
Job Title:
Drawing Name:
Drawing NO.: CW-102
Drawing Scale: AS SHOW
Drawing Date: 2020/6/15
Drawing: Cai
Collate: Joyi
Auditing: Gray Hui
Drawing Version: V7



# HANNAH @ CHLOE

NUMBER	MEMBER SIDE	COLOR
C01	200x100x8mm THK. GMS. RHS.	RAL9006
B01	200x100x8mm THK. GMS. RHS.	RAL9006
B02	150x50x6mm THK. S.S. RHS.	



## KEY PLAN

Drawing Status :

Ref NO.:

Client

Management:

Supplier:

**DIMON**  
Technology

DIMON Technology Ltd.

Tel: 00852-3916 5876

Fax: 00852-21203398

Http://www.dimontechnology.com

E-mail:gary@dimontechnology.com

Project:

Job Title:

Drawing Name:

Drawing NO.: CW-103

Drawing Scale: AS SHOW

Drawing Date: 2020/6/15

Drawing: Cai

Collate: Joyi

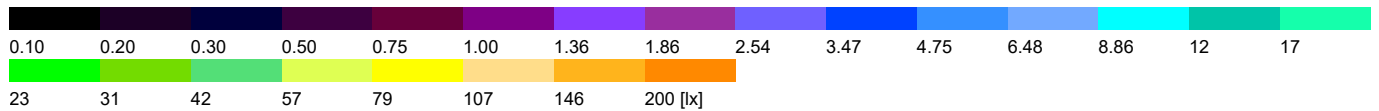
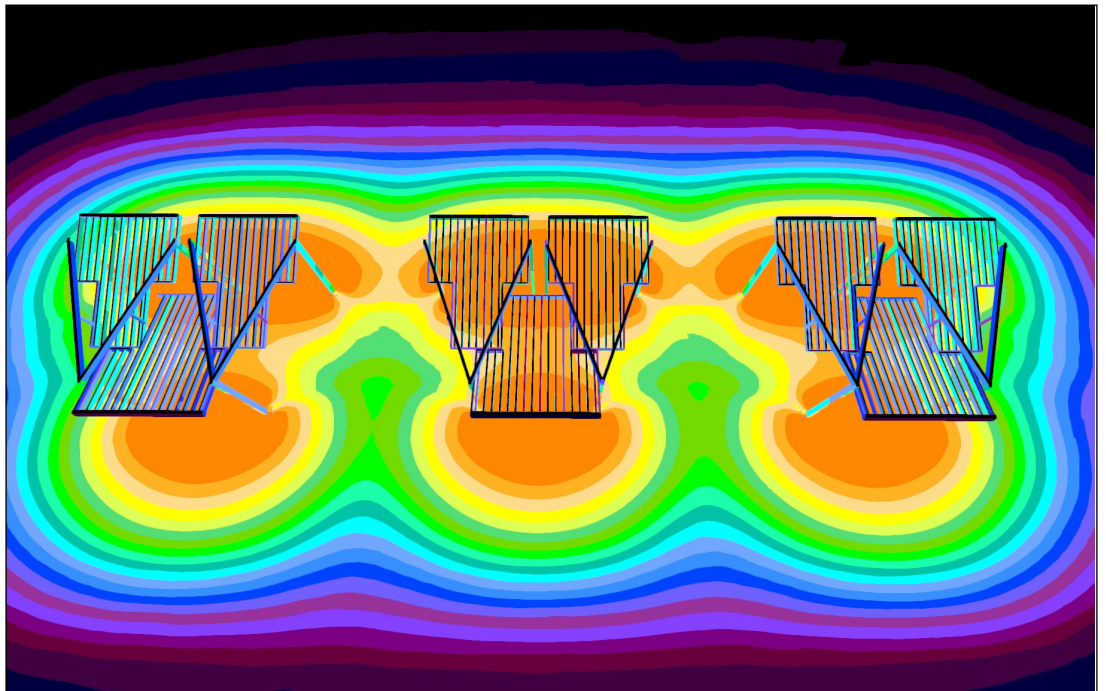
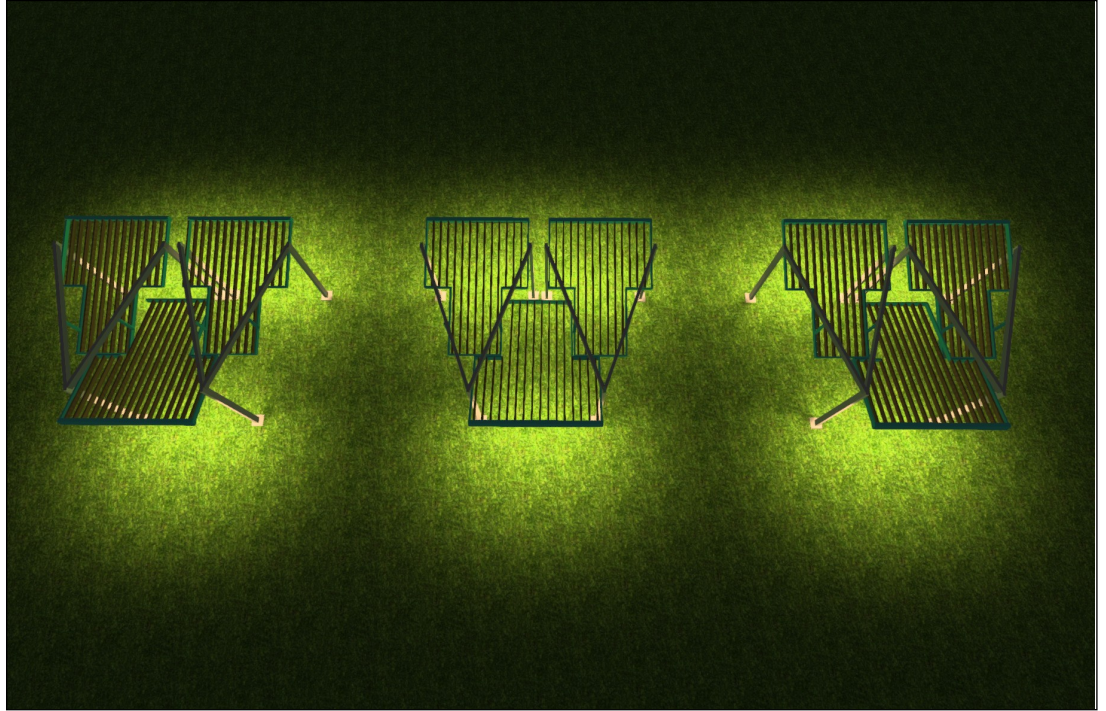
Auditing: Gray Hui

Drawing Version: V7



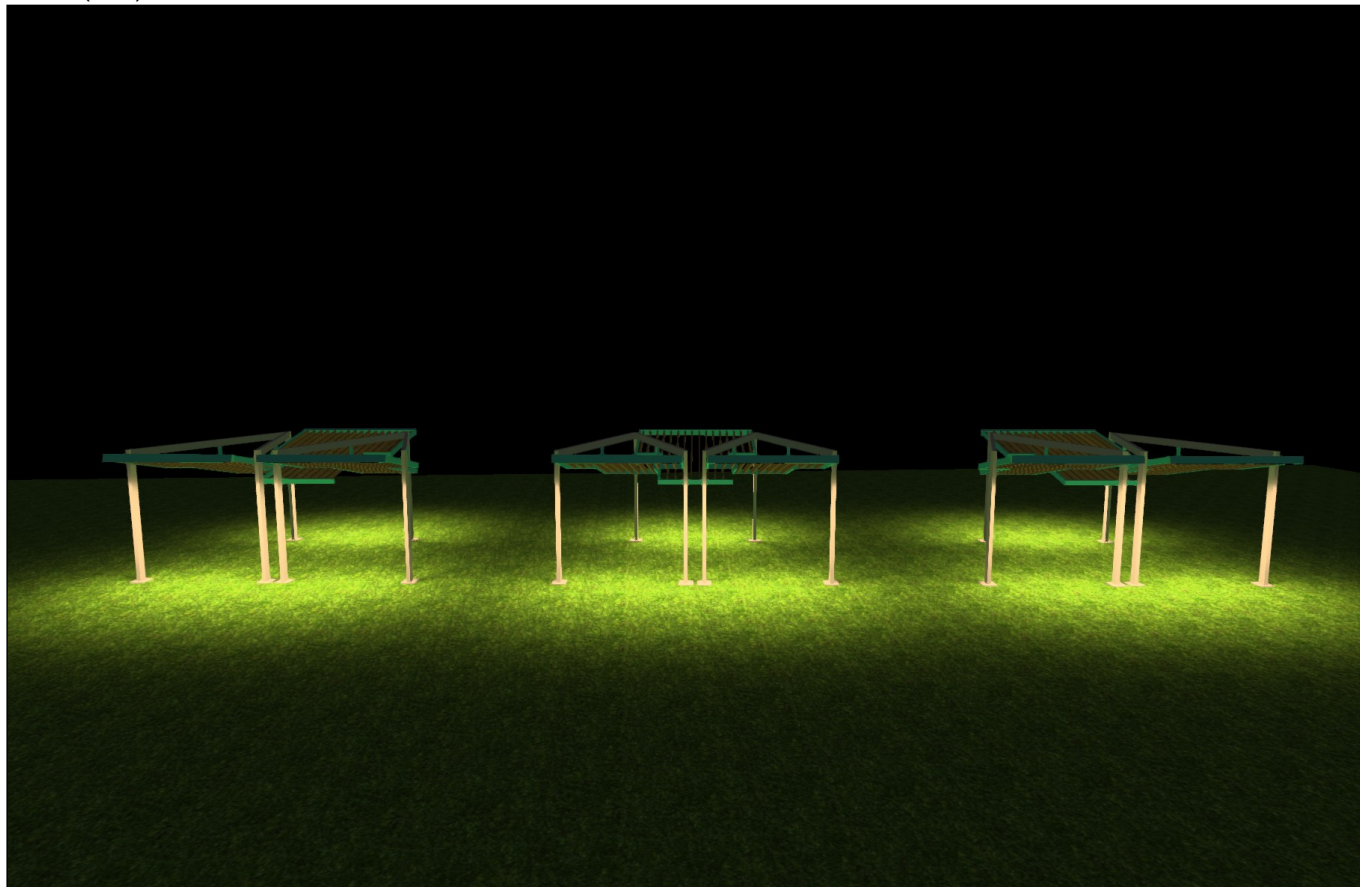


Simulation



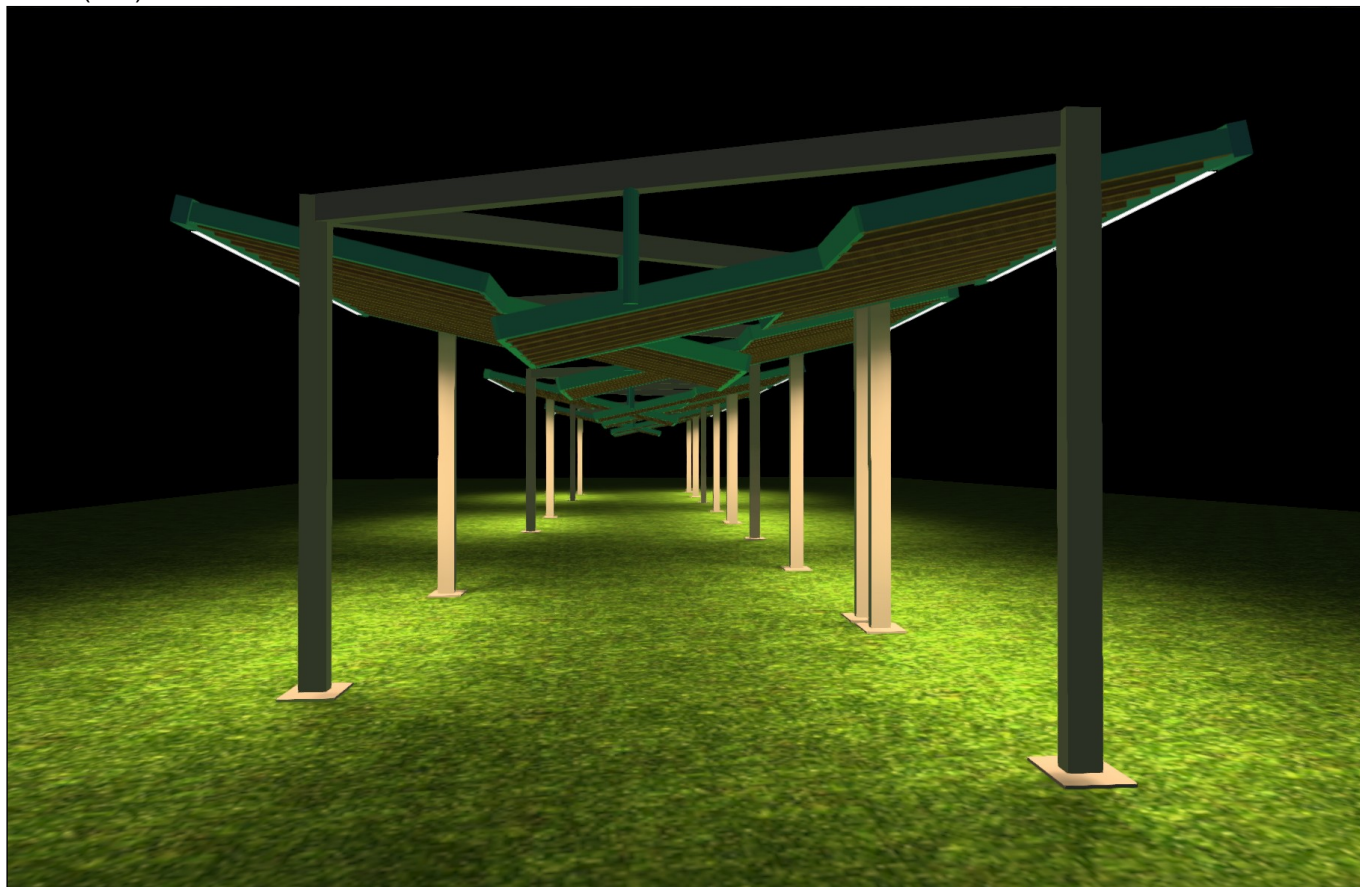
Site 1

Site 1 (106)

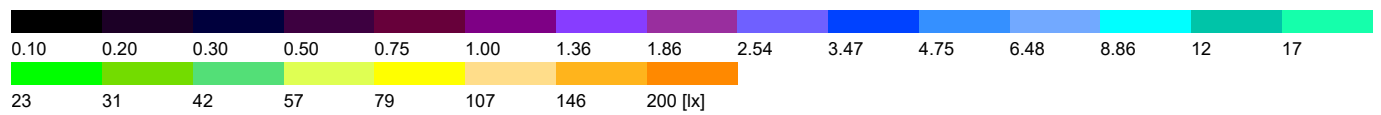
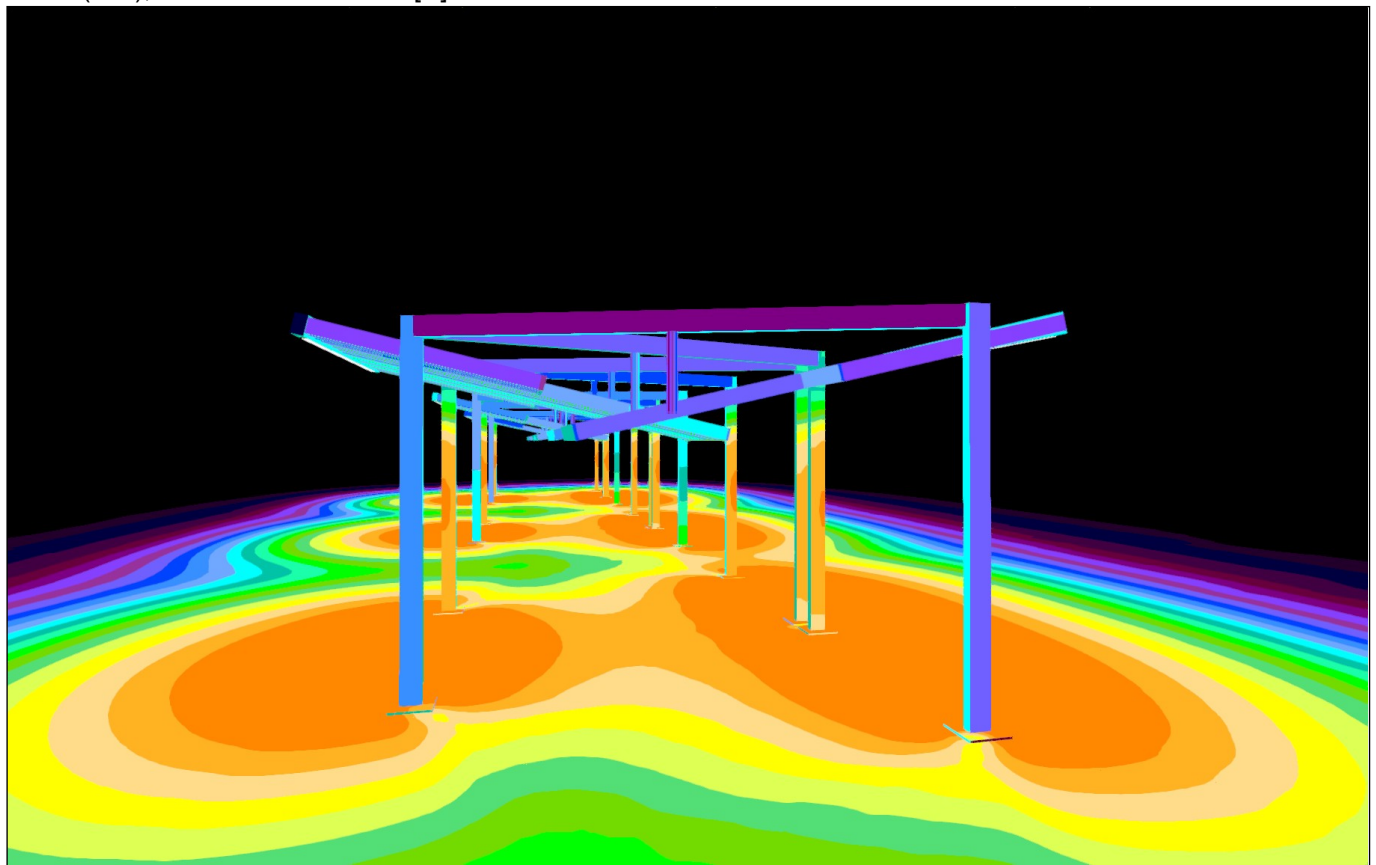




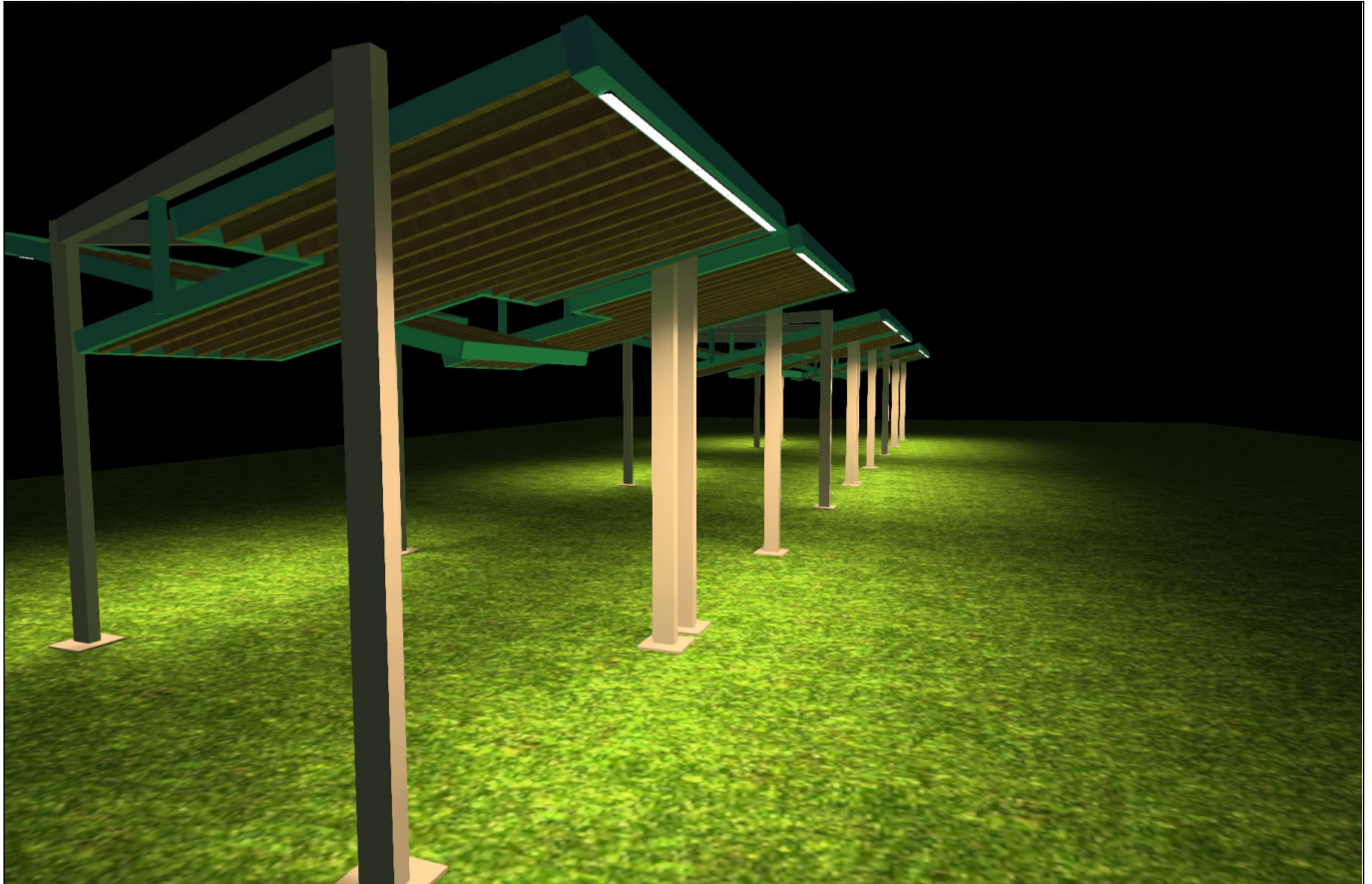
Site 1 (107)



Site 1 (108), Illuminance values in [lx]

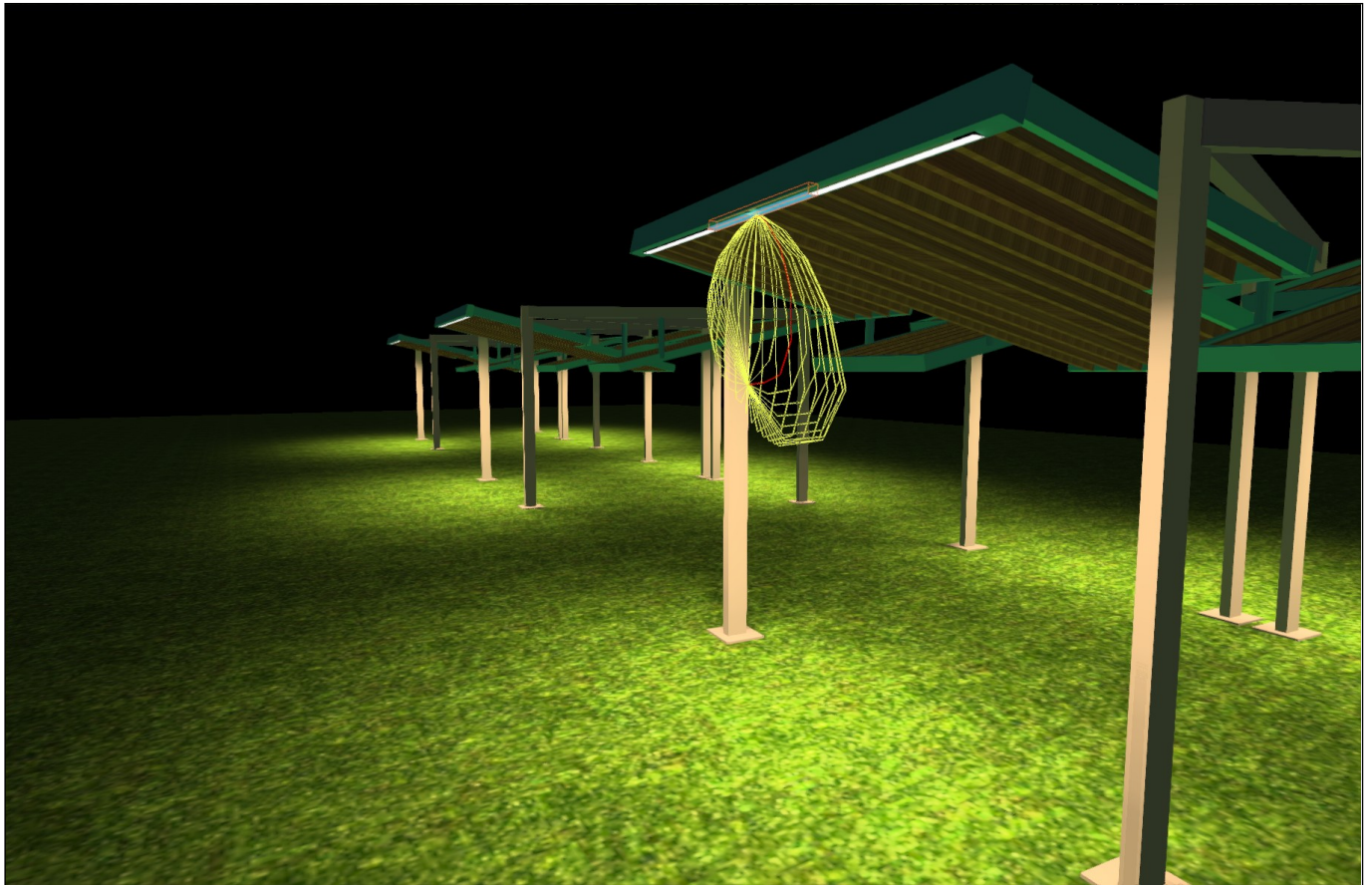


Site 1 (109)



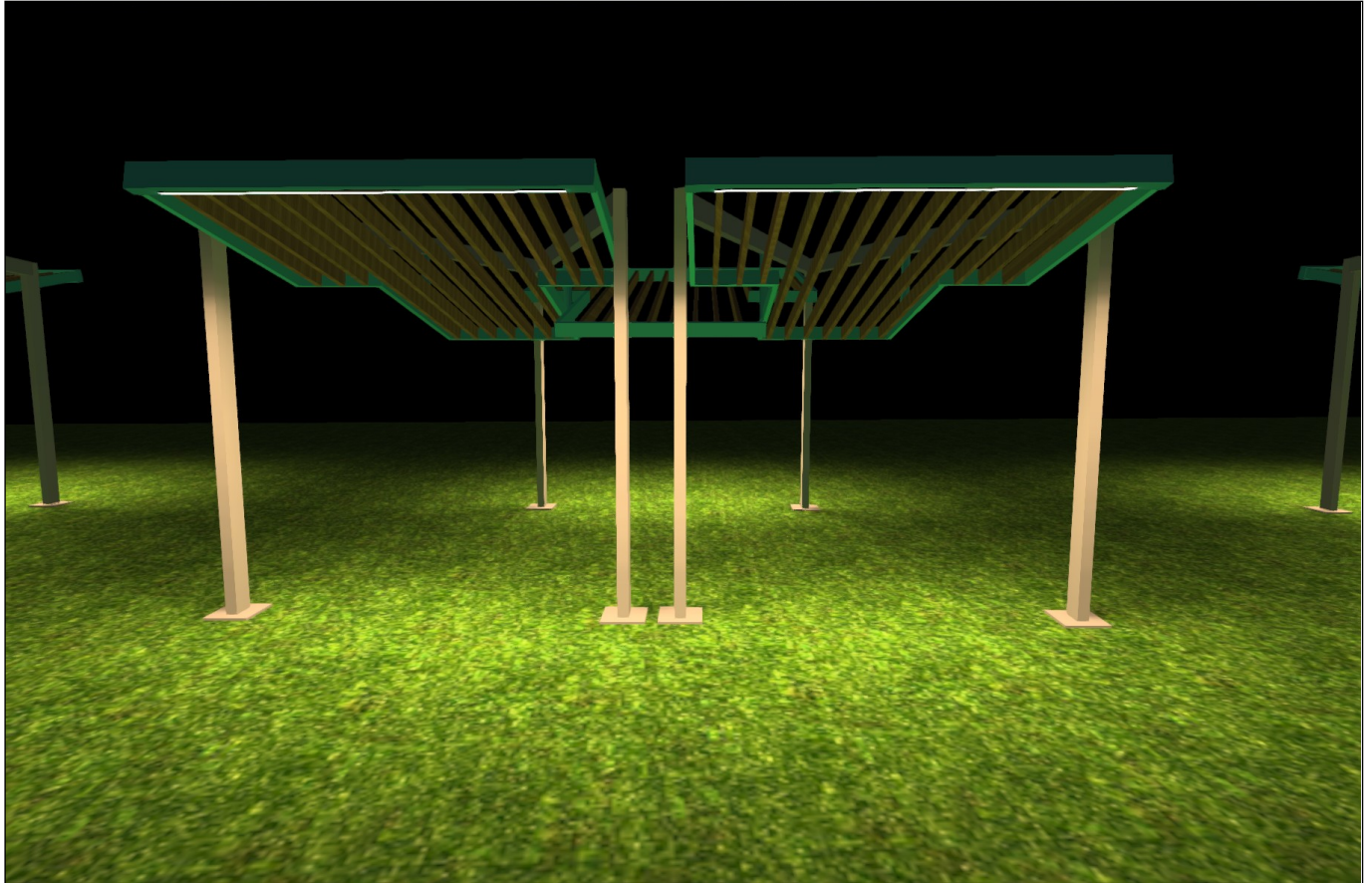


Site 1 (110)



Assessment zone 1

Site 1 (101)



Site 1 (102)

