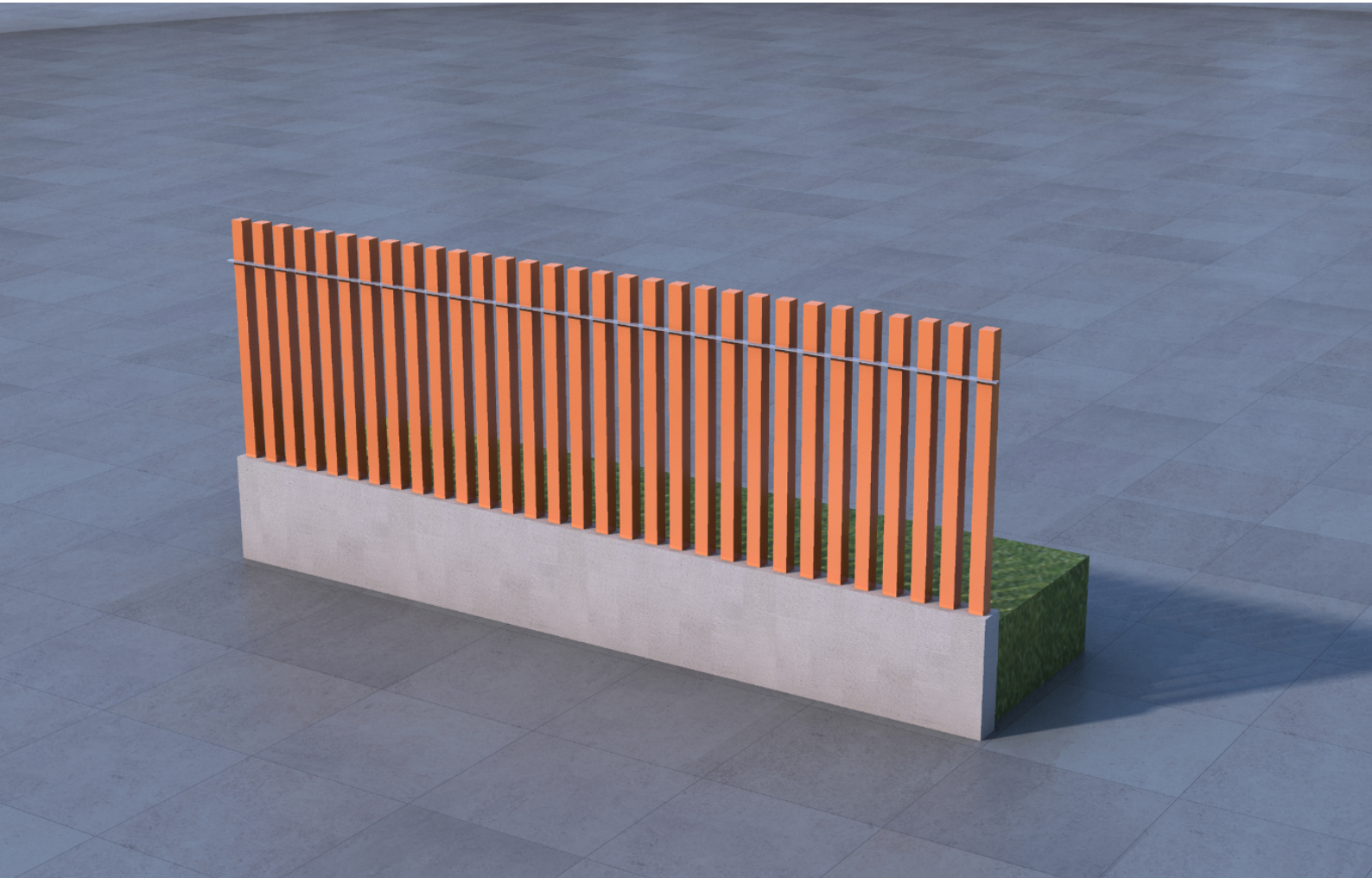


HANNAH@ FENCE 58



Podium platform Application



- Podium platform Application
- Hot Dip Galvanised square tube steel (SHS 50x50x5mm)
- 100x100mm ACABAMENTO EM PAINEIS TERRACOTTA
- 100 mm pitch,
- 20x20x2 mm square 316 stainless steel Bar
- 150x150x10mm THK. GMS. BASE PLATE fixed on the concrete with M10 HILTI Anchor Bolt

Technical Data

Major Material:

- Supporting structure made of hot-dip galvanised steel profiles
- Hot Dip Galvanised Finished
- TERRACOTTA PANELS
- Stainless Steel Fasteners A4-70 comply with BS EN ISO 3506-1.
- M10.S.S A4-70 Bolt & Nut
- Stainless Steel Grade S316L with ASTM A511 and Plate with ASTM A240

Finishes

- FINISHING IN TERRACOTTA PANELS
- Hairline Finish for 316 stainless steel Bar

Certification



Project	Fixture#	Date
		Firm

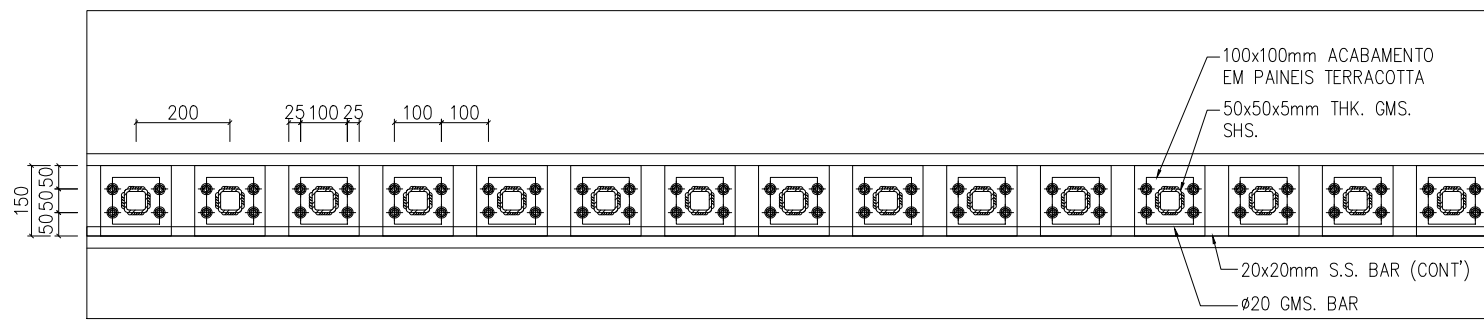


Ordering Information

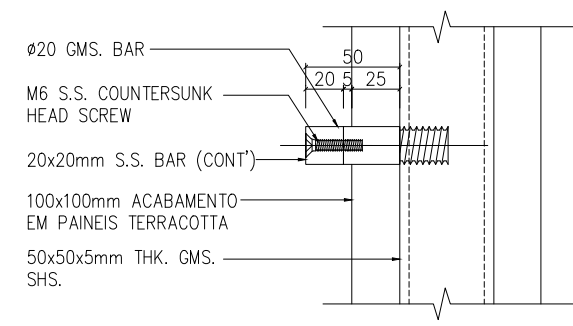
Choose the option that suits your need and write its corresponding code on the appropriate line to form the product code.

Example product code:

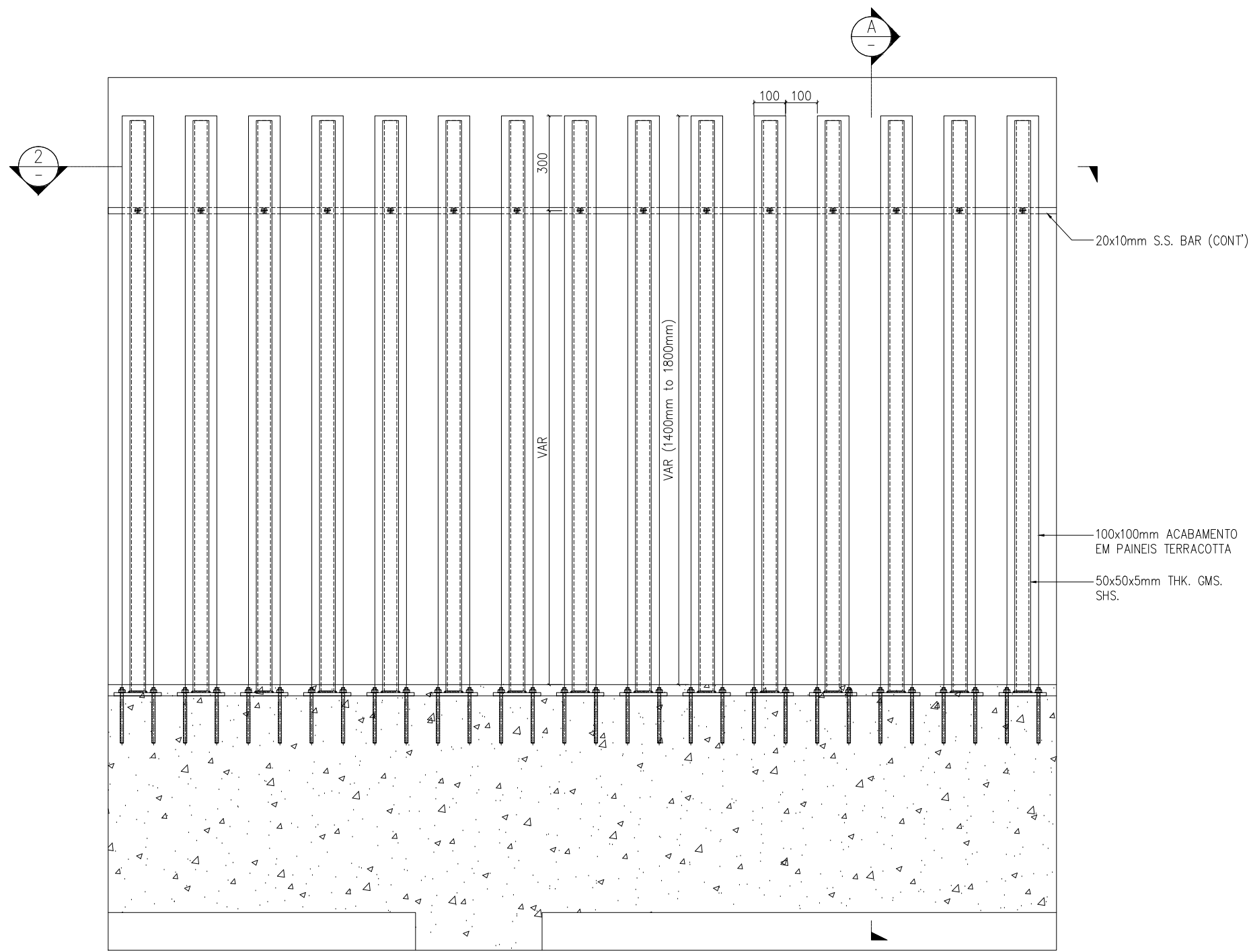
HANNAH@FENCE-58 -



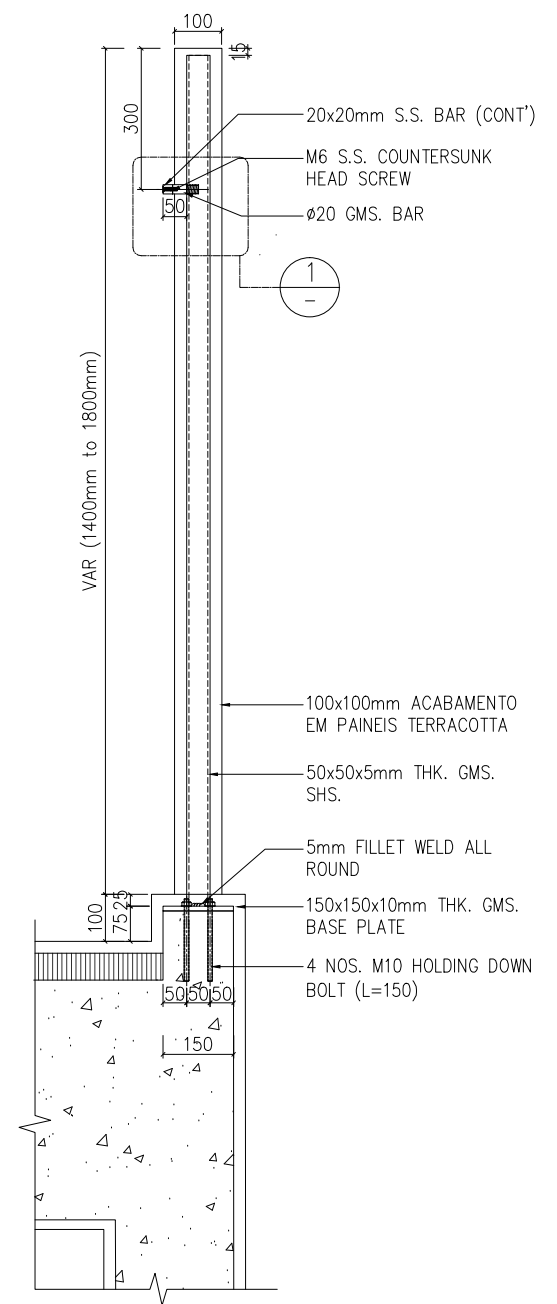
2 HANNAH@FENCE 58 TYPICAL PLAN
SCALE 1:8



1 DETAIL
SCALE 1:2



1 HANNAH@FENCE 58 TYPICAL ELEVATION
SCALE 1:8



A SECTION
SCALE 1:8

Drawing Status :

Ref NO.:

Client

Management:

Supplier:

DIMON
Technology

DIMON Technology Ltd.
Tel: 00852-3916 5876
Fax: 00852-21203398
Http://www.dimontechnology.com
E-mail: gary@dimontechnology.com

Project:

Job Title:
HANNAH@FENCE 58

Drawing Name:
RAILING
ELEVATION, PLAN AND DETAILS

Drawing NO.: RL-005

Drawing Scale: AS SHOW

Drawing Date: 2021/01/31

Drawing: Cai

Collate: Joyi

Auditing: Gray Hui

Drawing Version: 1