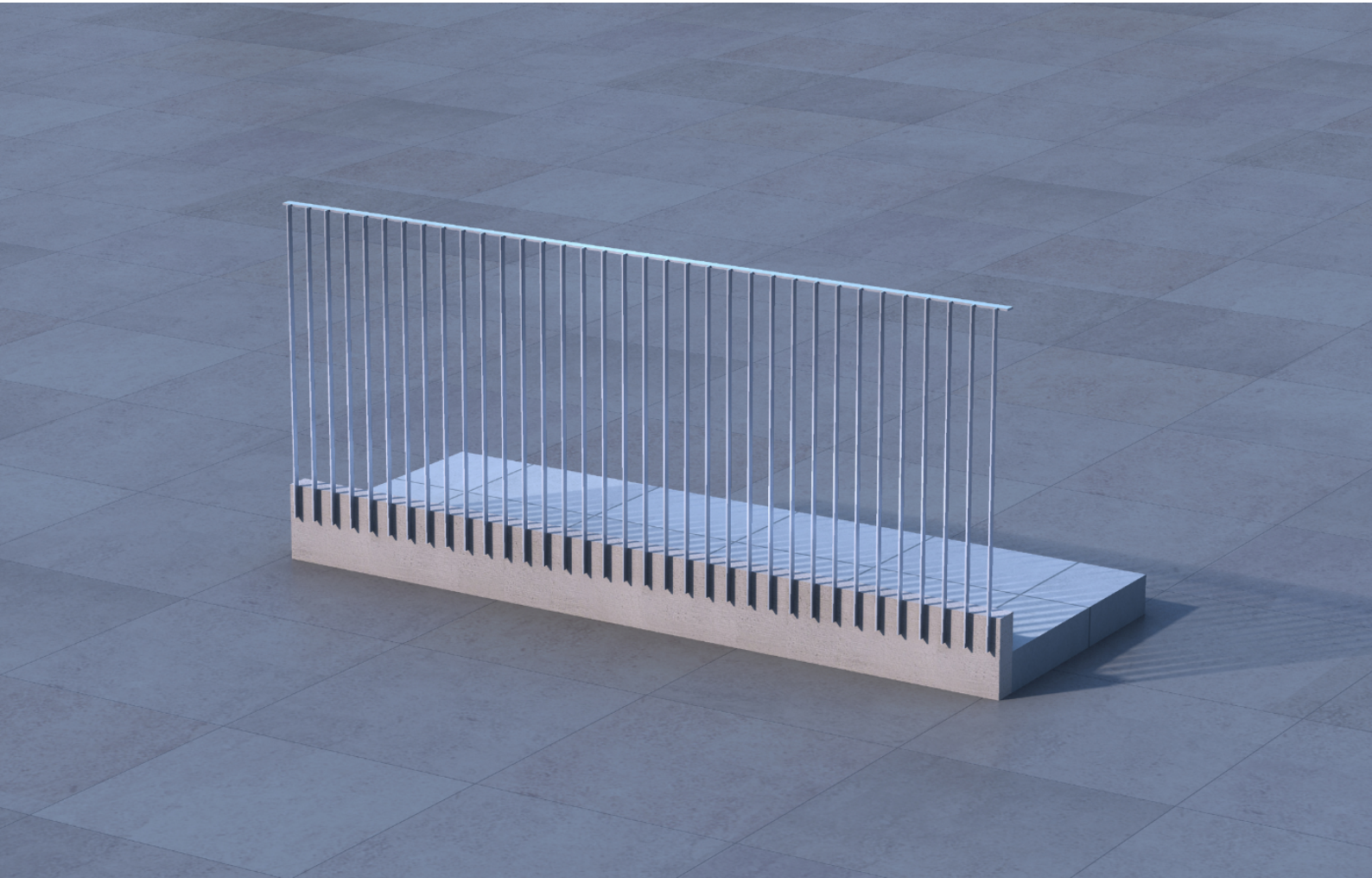


## HANNAH@ FENCE 68



Podium platform Application



- Podium platform Application
- The metal guardrail welded on the ground is made of 316 stainless steel
- 316 stainless steel Plate 50x15 mm
- 100 mm pitch
- 80x15mm stainless steel Plate
- Fixed on the concrete with M10 HILTI Anchor Bolt

# HANNAH@ FENCE 68

Podium platform Application

## Technical Data

Major Material:

- Stainless Steel Grade S316L with ASTM A511 and Plate with ASTM A240
- Welding comply BS EN 1011-1; BS EN 1011-2; BS EN ISO 15614
- Stainless Steel Fasteners A4-70 comply with BS EN ISO 3506-1.
- M10.S.S A4-70 Bolt & Nut

Finishes

Hairline Finish

Certification



Project	Fixture#	Date
		Firm

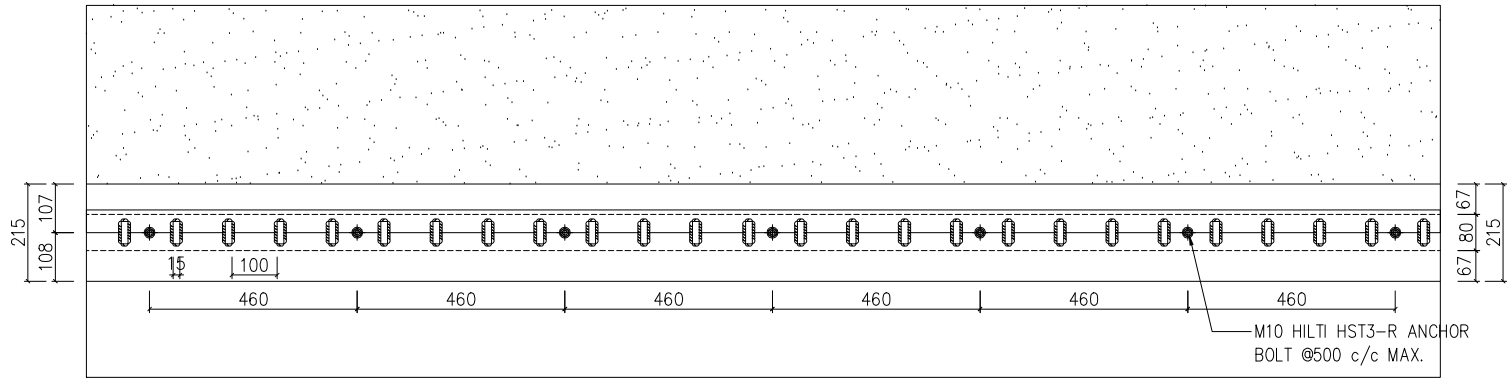


## Ordering Information

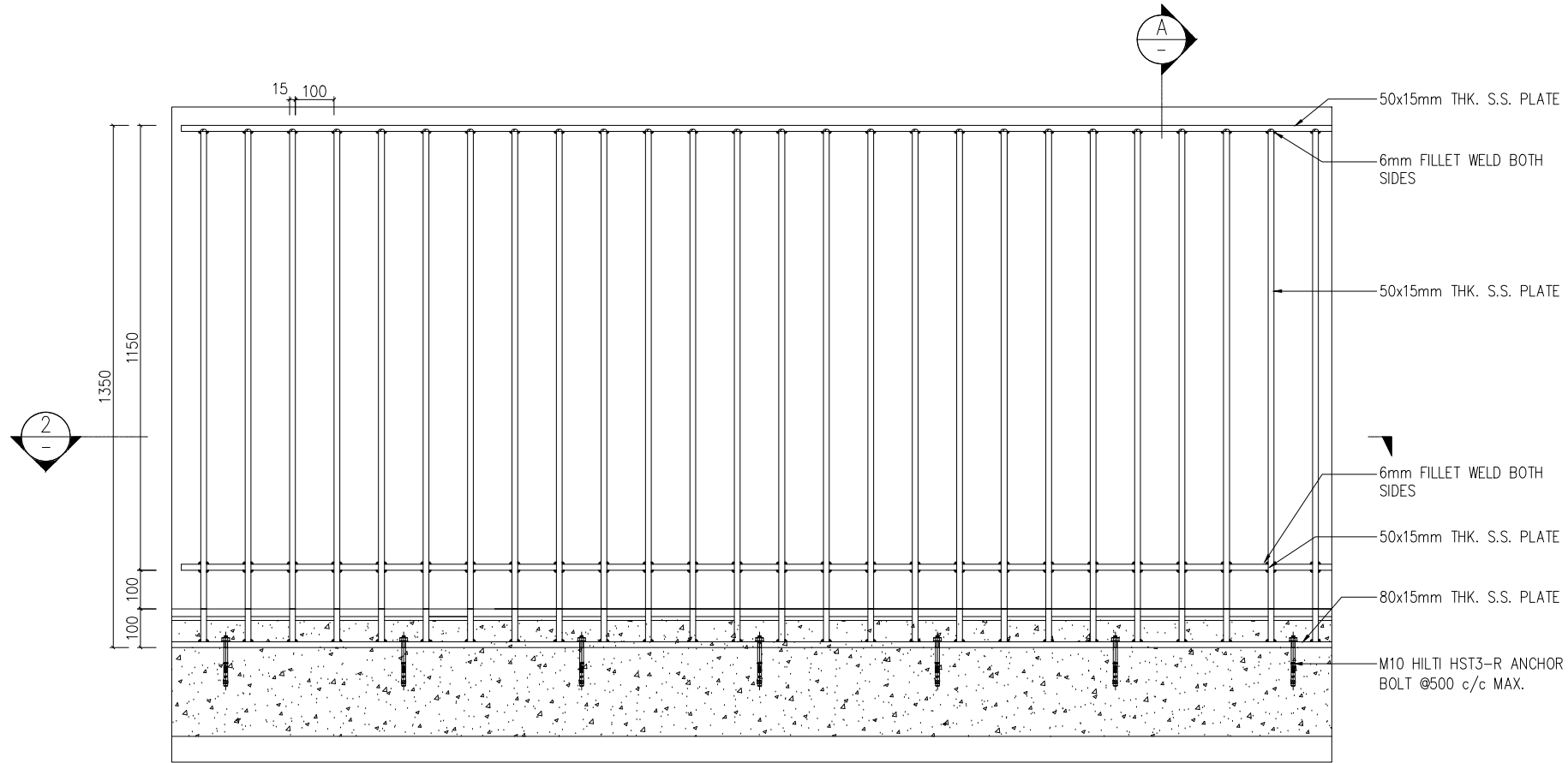
Choose the option that suits your need and write its corresponding code on the appropriate line to form the product code.

Example product code:

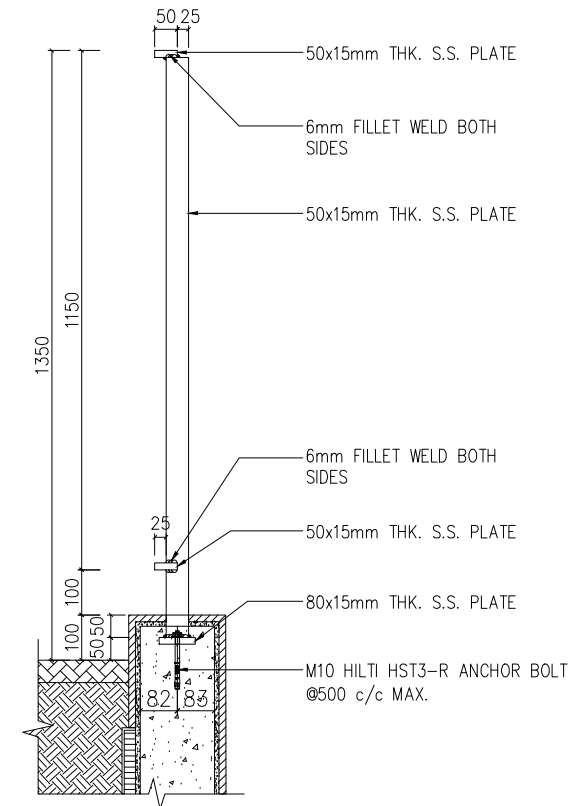
HANNAH@FENCE-68 -



2 HANNAH@ FENCE 68 TYPICAL PLAN  
SCALE 1:8



1 HANNAH@ FENCE 68 TYPICAL ELEVATION  
SCALE 1:8



A SECTION  
SCALE 1:8

Drawing Status :

Ref NO.:

Client

Management :

Supplier :

**DIMON**  
Technology

DIMON Technology Ltd.

Tel: 00852-3916 5876  
Fax: 00852-21203398  
Http://www.dimontechnology.com  
E-mail: gary@dimontechnology.com

Project:

Job Title:

HANNAH@ FENCE 68

Drawing Name:

RAILING  
ELEVATION , PLAN AND DETAILS

Drawing NO.: RL-006

Drawing Scale: AS SHOW

Drawing Date: 2021/01/31

Drawing: Cai

Collate: Joyi

Auditing: Gray Hui

Drawing Version: 1