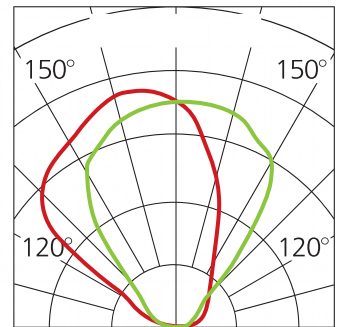


**INTERY**

D95 To D250mm 5W-25W Max IP67



Asymmetric Angle



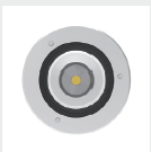
Anti-condensation kit



2000kg



Optional Accessory  
IP68 Junction box



Optional Symmetric  
reflector



Unique Asymmetric  
reflector



- LED in-ground luminaires with small dimensions for flush-mounting installation.
- The luminaire housing made of die-cast aluminium and AISI 316 stainless steel
- Cover with tempered glass and Anti-aging waterproof silicon gasket
- Outer casing made of ABS material.
- It's as well a great alternative to urban furniture due to its IP67 protection rating and IK10.

### Technical Data

Luminaire Type 安裝方式/Tipo de luminaria	Recessed In-Ground Type 內嵌式地埋燈 Empotrada en el suelo del Tipo		
Power Consumption Max 燈具功率 Consumo de energía Max	<b>Standard COB Version</b> • 5W @ Dia 95mm                      10W @Dia 130mm                      15W @ Dia 160 mm  • 20W @ Dia 180 mm                      25W @ Dia 210 mm                      30W @ Dia 250 mm <b>Asymmetric Angle</b> • 10W @ Dia 160 mm                      15W @ Dia 180 mm • 20W @ Dia 210 mm                      25W @ Dia 250 mm		
Input Voltage 輸入電壓 Voltaje de entrada	• AC100-240V @ MONO • DC24V + DMX 512 @ MONO @ RGB or RGBW		
LED Driver Type LED驅動款式 Tipo de controlador LED	Integrated-type LED Driver--Refer to LED driver specification 請參閱LED驅動器規格 Consulte la especificación de controlador de LED 1. ON/OFF Switch AC100-240V 50/60HZ 2. ELV Dimming Driver (5-100%) AC 100-120V 50/60Hz or AC 200-240V 50/60HZ 3. Remote 0 -10V Dimming Driver AC100-240V 50/60HZ 4. Remote Dali Dimming Driver AC100-240V 50/60HZ 5. Remote DMX Driver AC100-240V 50/60HZ 6. Remote DMX Driver AC100-240V 50/60HZ		
Control Protocol 控制協議/Protocolo de Control	1-10V / Dali / DMX 512 / RDM		
Beam Angle 光束角/ángulo de haz	18° 40° 60° and Asymmetric Angle		
Light Source Brand/光源品牌 Fuente de luz de marca	CREE - ( Photobiological safety-IEC 62471 'Risk Group 1' (low risk) )		
"Lumen Maintenance LM-80 Reported by TM-21"	L70(10k) > 60,000 hrs		
LED Life/LED壽命 La vida del LED	>60,000 hours		
Color Temperature / 色溫 /Temperatura del color	2700K / 3000K / 4000K / 5000K / 6500K / RGB / RGBW( 4000K or 5000K)		
Color Rendering Index/顯色指數 Índice de reproducción cromática	• >80 for White Color LED • >90 for White Color LED		
MacAdam Ellipses Binning 麥克亞當橢圓分級 Mac Adam binning elipse	Standard Deviation Colour Matching < 3 SDCM 標準偏差配色 < 3 SDCM Coincidencia de color estándar Desviación < 3 SDCM		
Luminaire Efficacy 燈具效率 La eficacia de la luminaria	• 70 Lm/w(2700K),      70 Lm/w(3000K),      80 Lm/w(4000K), • 80 Lm/w(5000K),      80 Lm/w(6500K),      50 Lm/w(RGB),      65 Lm/w (RGBW)		
LED Source Luminous Efficacy LED光源光效 Fuente luminosa LED Eficacia	• 120 Lm/w(2700K),      120 Lm/w(3000K),      130 Lm/w(4000K), • 130Lm/w(5000K),      130 Lm/w(6500K),      100 Lm/w(RGB),      120lm/w (RGBW)		
Housing materials/外殼材料 Materiales de la carcasa	Die cast aluminium , 8mm thick tempered glass wiht #316 Stainless Steel Cover 壓鑄鋁,8mm厚鋼化玻璃和#316不銹鋼面蓋 Aluminio fundido, vidrio templado de 8 mm de espesor con # 316 de la cubierta de acero inoxidable		
Housing Color/ 外殼顏色 Color de la carcasa	#316 Stainless Steel Cover #316不銹鋼面蓋 # 316 de la cubierta de acero inoxidable		
Operating Temperature Range / 工作溫度範圍 Rango de temperatura de funcionamiento	-30 °C / +50 °C		
Operating Humidity -工作濕度 Humedad de funcionamiento	0~90%, non-condensing-不結霜 sin condensación		
Ingress Protection/ 防護等級 Protección de ingreso	IP67		
Mech impact protection 機械衝擊保護 Protección contra impactos mecánicos	IK10		
Dimension/尺寸 Dimensión	Refer to the Drawing 請參考圖紙/Consulte el dibujo		
Comply Testing Standard 符合測試標準 Cumplir el estándar de prueba	LED Luminaires: IEC 60598-1 / IEC 60598-2-13 / IEC62471;IEC/EN 62031; IEC/EN 62493 ; IEC/EN 62471 (Risk Group 1); RoHS TM21 LED Driver: IEC/EN 61347-1; IEC/EN 61347-2-13; IEC/EN 62384; IEC/EN 61000-3-2; IEC/EN 61000-3-3;IEC/EN61574;EN 55015 ; IEC /EN 62384		
Certification-認證-Certificación			

Project	Fixture#	Date
		Firm



## Ordering Information

Choose the option that suits your need and write its corresponding code on the appropriate line to form the product code.

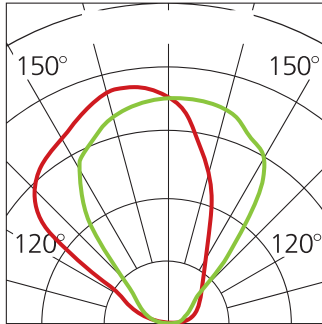
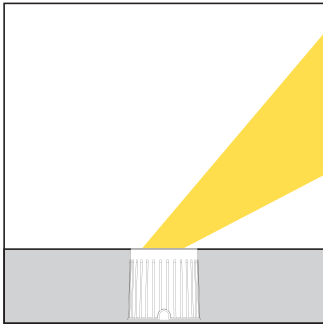
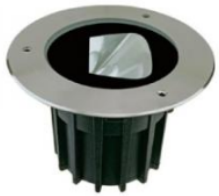
Example product code: [INTERY-25W](#)

INTERY - -

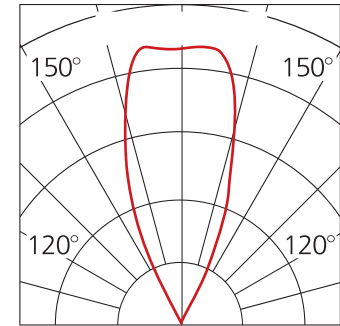
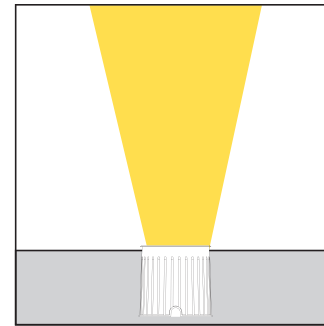
POWER  
CONSUMPTION

POWER CONSUMPTION	
Code	Description
<a href="#">5W</a>	5W @ Dia 95mm Standard COB Version
<a href="#">10W</a>	10W @ Dia 130 x H: 136mm Standard COB Version
<a href="#">15W</a>	15W @ Dia 160 x H153mm Standard COB Version
<a href="#">20W</a>	20W @ Dia 180 x H162mm Standard COB Version
<a href="#">25W</a>	25W @ Dia 210 x H181mm Standard COB Version
<a href="#">30W</a>	30W @ Dia 250 x H190mm Standard COB Version
<a href="#">10W</a>	10W @ Dia 160 x H153mm Asymmetric Angle
<a href="#">15W</a>	15W @ Dia 180 x H162mm Asymmetric Angle
<a href="#">20W</a>	20W @ Dia 210 x H181mm Asymmetric Angle
<a href="#">25W</a>	25W @ Dia 250 x H190mm Asymmetric Angle

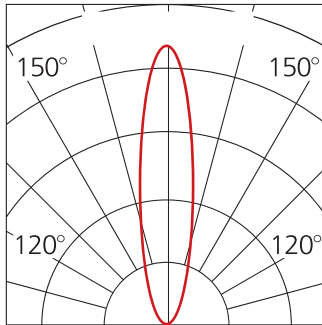
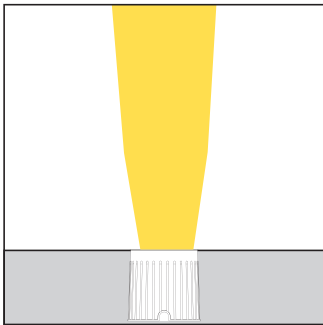
# BEAM ANGLE



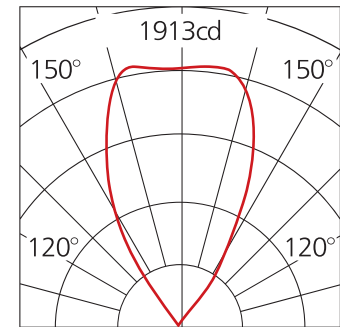
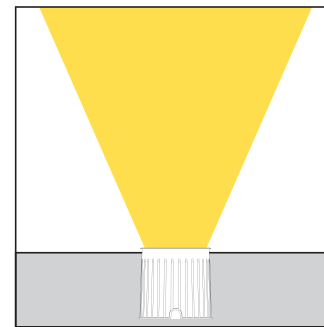
Asymmetric



40°



18°



60°



Technical Drawing-COB Reflector Version



5W



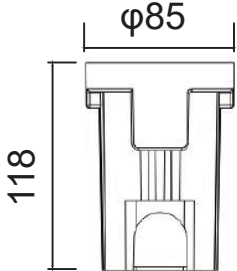
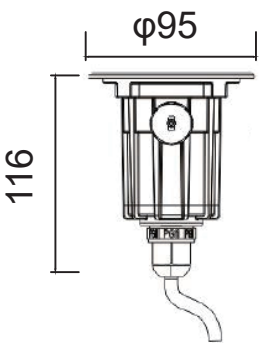
10W



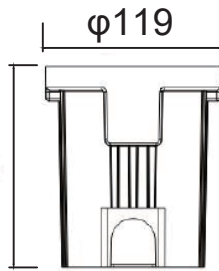
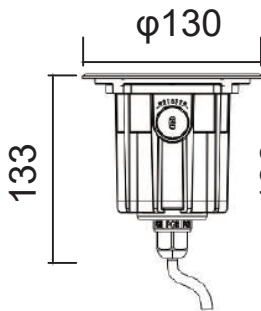
15W



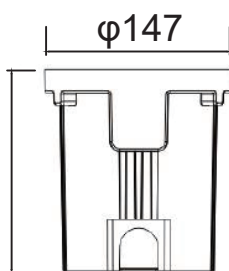
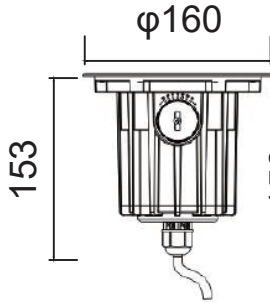
Asymmetric  
Angle-10W



Embedded part



Embedded part



Embedded part

Accessories



Honeycomb  
louver

Unit:mm

Technical Drawing-COB Reflector Version



20W

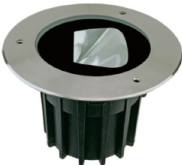


25W

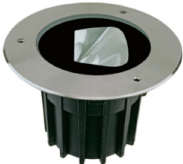


30W

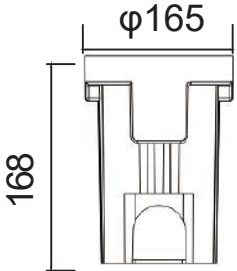
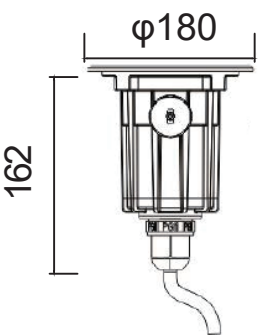
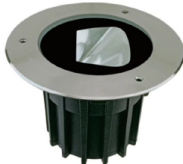
Asymmetric  
Angle:15W



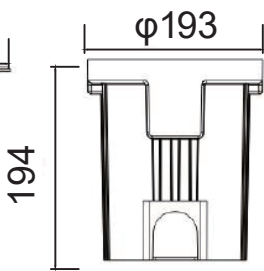
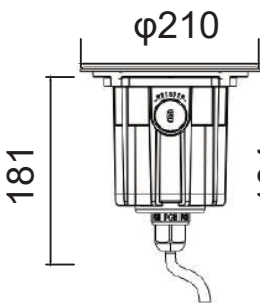
Asymmetric  
Angle:20W



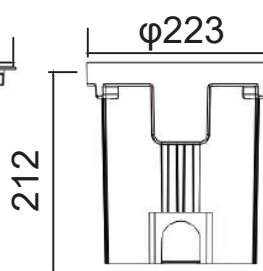
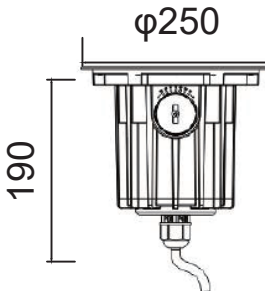
Asymmetric  
Angle:25W



Embedded part

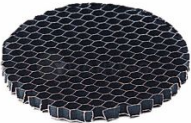


Embedded part



Embedded part

Accessories



Honeycomb  
louver

Unit:mm