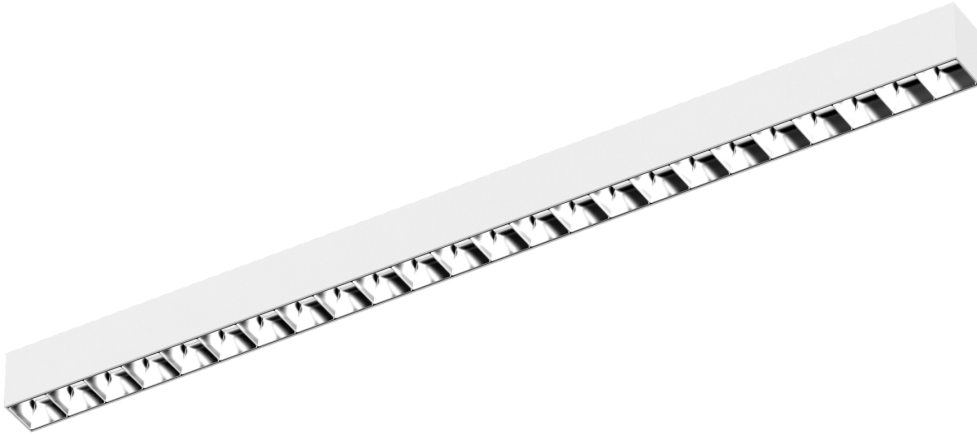


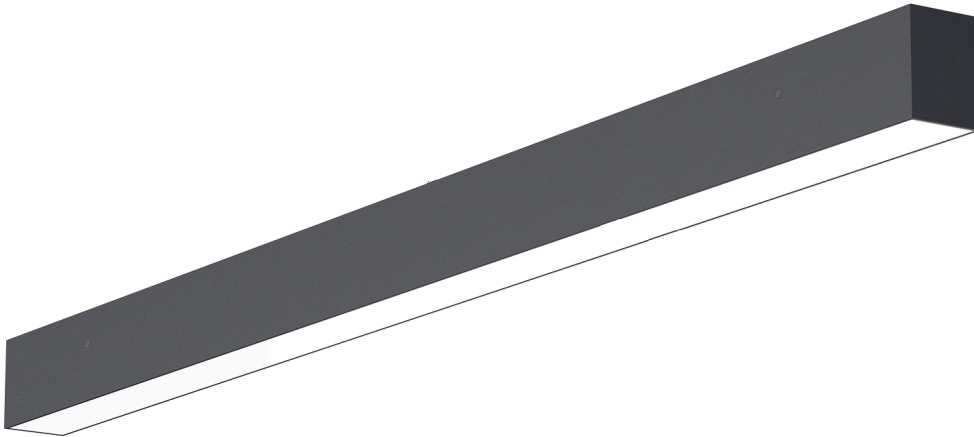
**LAHO**



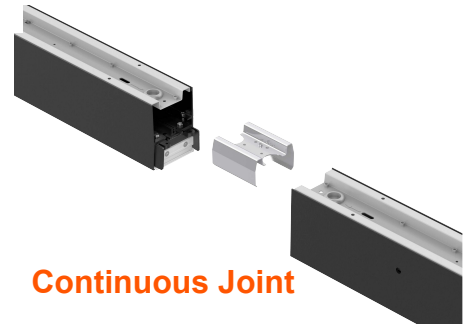
W56xH75 mm 60W Max IP40



**Reflector Type**



**Opal Diffuser Type**



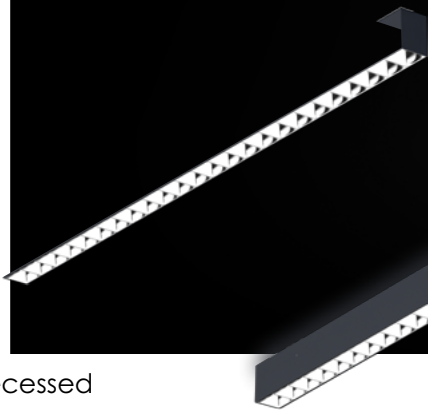
**Continuous Joint**

LAHO is new linkable design linear light. Adopt high lumen efficiency SMD LED with even light output, aluminum light body providing excellent thermal management. Pendant with steel rope, pendant with round ceiling plate, surface mounted, wall mounted, recessed and track installation are all available. With Corner /Cross/ Straight/ T shaped connectors for multiple shape design. Anti-glare design with reflector UGR<19. Continuous lighting with no dark areas with opal and prismatic polycarbonate diffuse

Splicing

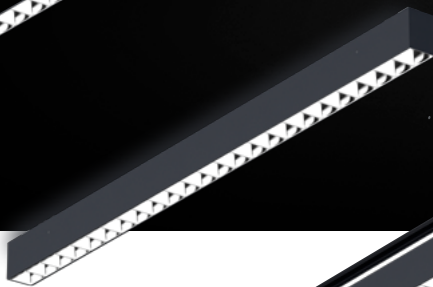


Wall mounted



Recessed

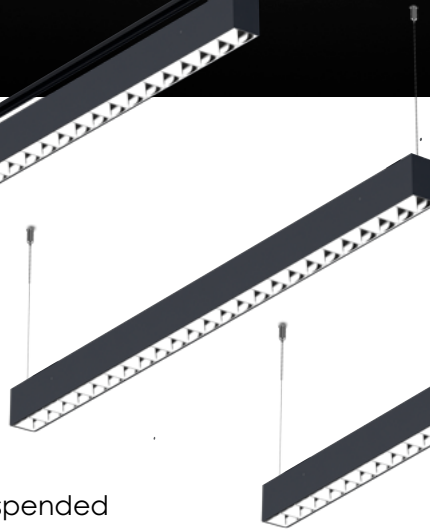
Surface mounted



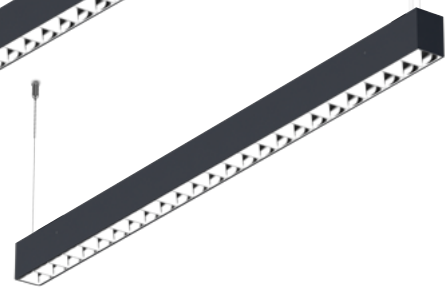
Track



Suspended



Suspended by surface plate



## Multi-installation

[www.dimontechnology.com](http://www.dimontechnology.com)


## Technical Data

Luminaire Type-安裝方式 Tipo de luminaria	Pendant / surface mounted / wall mounted / Trimless recessed / Track 吊裝 / 明裝 / 壁裝 / 無框嵌入式 / 軌道安裝 Colgante / montado en superficie / montado en la pared / empotrado sin molduras / carril
Dimension-尺寸-Dimensión	<b>Reflector Type :</b> • L: 1204 x W: 56 x H: 75 mm L: 1504 x W: 56 x H: 75 mm <b>Opal Diffuser Type</b> • L: 1212 x W: 56 x H: 75 mm L: 1512 x W: 56 x H: 75 mm
Power Consumption Max-燈具功率 Consumo de energía Max	• L: 1204mm / L:1212mm: 13W 17W 21W 24W 36W 50W • L: 1504mm / L:1512mm: 33W 35W 42W 60W
Input Voltage-輸入電壓-Voltaje de entrada	AC220-240V 50/60HZ
Power Factor / 功率因數/Factor de potencia	PF>0.95
Total Harmonic Distortion/總諧波失/Distorsión armónica total	THD<20%
LED Driver Type LED驅動款式 Tipo de controlador LED	Integrated-type LED Driver--Refer to LED driver specification 請參閱LED驅動器規格 Consulte la especificación de controlador de LED 1. ON/OFF Switch AC220-240V 50/60HZ 2. ELV Dimming Driver (5-100%) AC 100-120V 50/60Hz or AC 200-240V 50/60HZ 3. 1-10V Dimming Driver AC100-240V 50/60HZ 4. Dali Dimming Driver AC100-240V 50/60HZ 5. DMX Driver AC100-240V 50/60HZ 6. RDM Driver AC100-240V 50/60HZ 7. Remoted Emergency Backup >2 hours or >3 hours @ < 12 charger hours應急電池/Copia de seguridad de emergencia
Control Protocol-控制協議/Protocolo de Control	1-10V / Dali / DMX 512 / RDM / ZIGBEE Wireless Control
Beam Angle Combination 光束角組合 Combinación de ángulo de haz	• Reflector Type: -Down Light : 60° Down Light 60°(70%output) and Up PC Opal diffuser 120° (30% output) • 反射鏡類型: -向下燈光角度: 60° 向下燈光角度60° (輸出功率為70%) 和向上燈光角度(PC 乳白罩擴散器-輸出功率為30%): 120° • Tipo de reflector: -Down Light: 60° Down Light 60° (70% de salida) y Up PC Opal difuso 120° (30% de salida) • PC Opal diffuser: -Down Light 120° Down Light 120°(70%output) and Up 120° (30% output) • PC 乳白罩擴散器: -向下燈光角度: 120° 向下燈光角度120° (輸出功率為70%) 和向上燈光角度(PC 乳白罩擴散器-輸出功率為30%): 120° • Difusor PC Opal: -Down Light 120° Down Light 120° (70% de salida) y Up 120° (30% de salida)
Light Source Brand-光源品牌-Fuente de luz de marca	OSRAM
"Lumen Maintenance LM-80 Reported by TM-21"	L70(10k) > 63,500 hrs
LED Life-LED壽命-La vida del LED	>60,000 hours
Color Temperature -色溫 Temperatura del color	2700K / 3000K / 4000K / 5000K / 6500K
Color Rendering Index-顯色指數 Índice de reproducción cromática	> 80 > 90
MacAdam Ellipses Binning 麥克亞當橢圓分級 Mac Adam binning elipse	Standard Deviation Colour Matching < 3 SDCM標準偏差配色< 3 SDCM Coincidencia de color estándar Desviación < 3 SDCM
Luminaire Efficacy燈具效率 La eficacia de la luminaria	Opal PC Diffuser Type • 110 Lm/w(2700K), 110 Lm/w(3000K), 115 Lm/w(4000K), • 120 Lm/w(5000K), 120 Lm/w(6500K), Reflector Type • 130 Lm/w(2700K), 140 Lm/w(3000K), 155 Lm/w(4000K), • 160 Lm/w(5000K), 160 Lm/w(6500K),
LED Source Luminous EfficacyLED光源光效 Fuente luminosa LED Eficacia	• 140 Lm/w(2700K), 150 Lm/w(3000K), 165 Lm/w(4000K), • 170 Lm/w(5000K), 170 Lm/w(6500K),
Housing materials-外殼材料-Materiales de la carcasa	Aluminium Alloy and Polycarbonate Reflector or Polycarbonate Opal Diffuser 鋁合金和PC反射器或乳白PC擴散器Reflector de aleación de aluminio y policarbonato o difusor de ópalo de policarbonato
Housing Color-外殼顏色-color de la carcasa	Matte white / Matte black / Matte silver 啞光白色 / 啞光黑色 / 啞光銀色 Blanco mate / Matte black / Astilla mate
Reflector Color 反光板顏色/Color del reflector	Bright Silver 亮銀 Plata brillante Matte White 啞白anco mate
Ingress Protection-防護等級/Protección de ingreso	IP40
Operating Humidity -工作濕度 Humedad de funcionamiento	0~90%, non-condensing-不結霜 sin condensación
Operating Temperature Range / 工作溫度範圍 Rango de temperatura de funcionamiento	-30 °C / +50 °C
Comply Testing Standard 符合測試標準 Cumplir el estándar de prueba	LED Luminaries: IEC 60598-1; IEC 60598-2-1; IEC62471; IEC 62031; IEC62493; IEC 62471 EMC: EN55015; IEC/EN 61000-3-2; IEC/EN 61000-3-3; IEC/EN61574; RoHS LED Driver: IEC/EN 61347-1; IEC/EN 61347-2-13; IEC/EN 62384; IEC/EN 61000-3-2; IEC/EN 61000-3-3; IEC/EN61574; EN 55015; IEC /EN 62384
Certification-認證-Certificación	      

Project	Fixture#	Date
		Firm



## Ordering Information

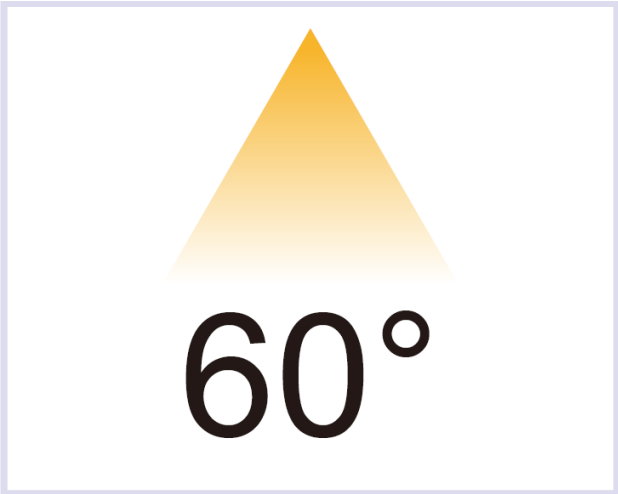
Choose the option that suits your need and write its corresponding code on the appropriate line to form the product code.

Example product code: [LAHO-60W](#)

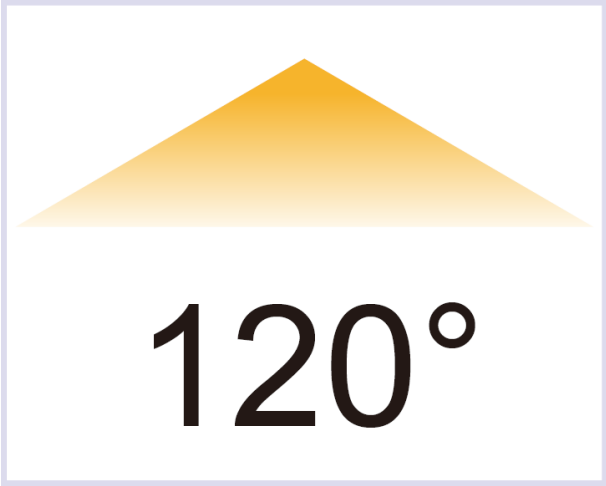
LAHO - - \_\_\_\_\_  
Power Consumption

Power Consumption	
Code	Description
13W	13W @ L:1204 mm -Reflector Type
13W	13W @ L:1212 mm -Opal Diffuser Type
17W	17W @ L:1204 mm -Reflector Type
17W	17W @ L:1212 mm -Opal Diffuser Type
21W	21W @ L:1204 mm-Reflector Type
21W	21W @ L:1212 mm -Opal Diffuser Type
24W	24W @ L:1204 mm-Reflector Type
24W	24W @ L:1212 mm -Opal Diffuser Type
36W	36W @ L:1204 mm-Reflector Type
36W	36W @ L:1212 mm -Opal Diffuser Type
33W	33W @ L:1504 mm-Reflector Type
33W	33W @ L:1512 mm -Opal Diffuser Type
35W	35W @ L:1504 mm-Reflector Type
35W	35W @ L:1512 mm -Opal Diffuser Type
42W	42W @ L:1504 mm-Reflector Type
42W	42W @ L:1512 mm -Opal Diffuser Type
50W	50W @ L:1504 mm-Reflector Type
50W	50W @ L:1512 mm -Opal Diffuser Type
60W	60W @ L:1504 mm-Reflector Type
60W	60W @ L:1512 mm -Opal Diffuser Type

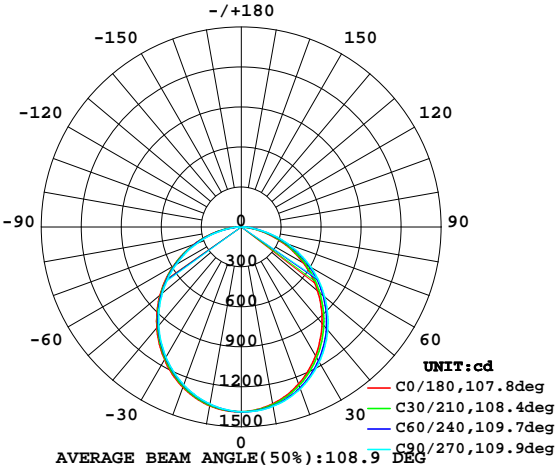
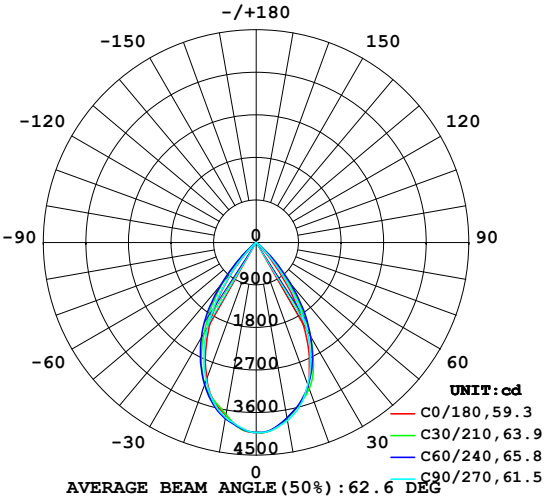
BEAM ANGLE



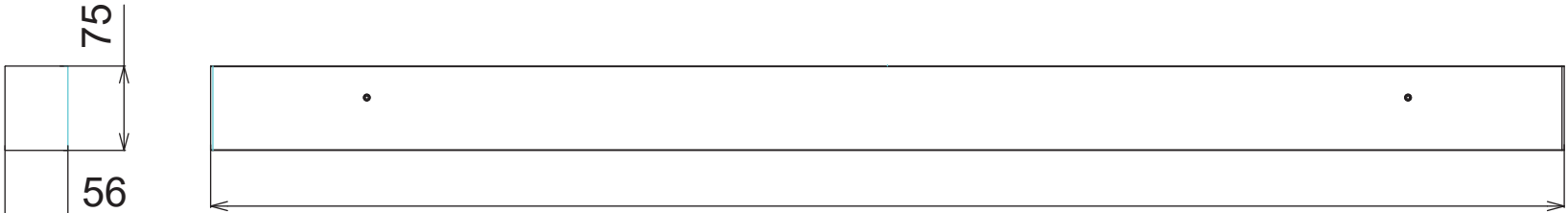
Reflector



PC Opal diffuser

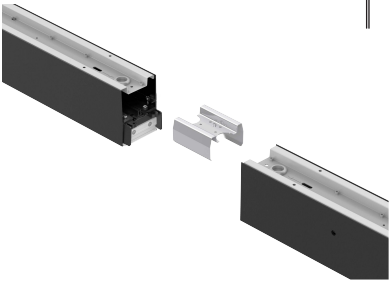


# Technical Drawing



Reflector Type L: 1204&1504  
Opal Diffuser Type L:1212 & 1512

Accessories :Continuous Joint



Unit: mm

Accessories : Opal Diffuser Type Only:

