

## LASHE

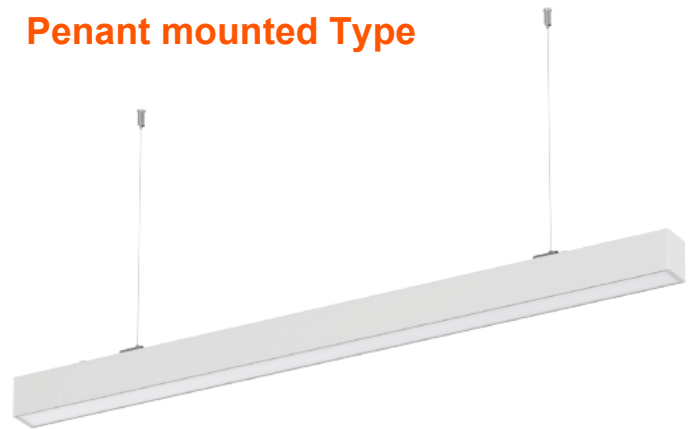
W:58xH:70 Max 60W UGR19



### Surface mounted Type



### Penant mounted Type



- Housing: Extrusion aluminum alloy with powder-coated with Opal polycarbonate Diffuser to Anti-Glare for UGR19
- Integrated-Type ON/OFF, 1-10V, DALI and DMX control gear.
- Quick install: Fast connector, loop in/out, snap-on installation.
- Lamp body and bracket is separated, convenient for disassembly.
- Installation way: Surface mounted/ suspended.

## Technical Data

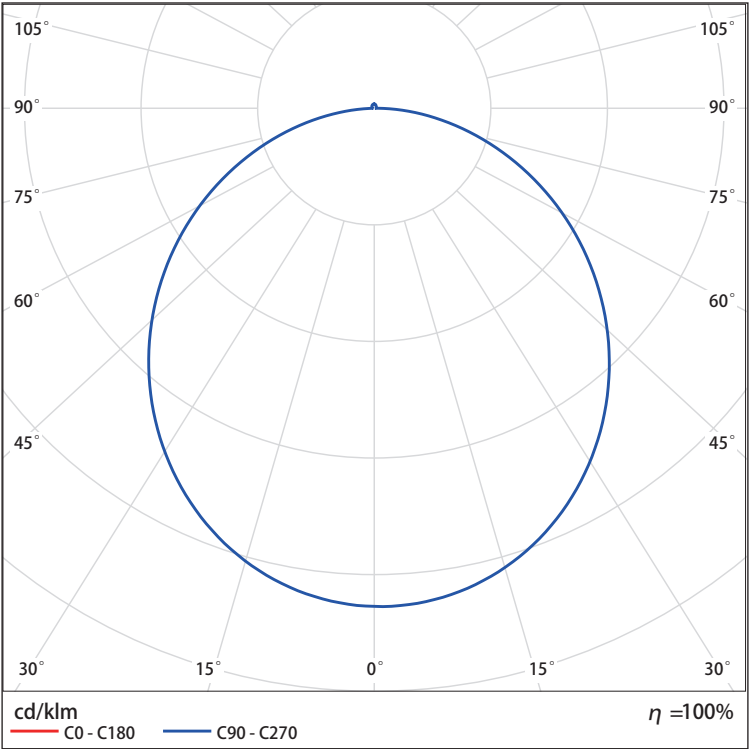
Luminaire Type-安裝方式/Tipo de luminaria	Pendent Type \ Surface mounted 吊裝燈具\吸頂式燈具 Pendent tipo \ Surface mounted	
Dimension-尺寸-Dimensión	L: 1200 x W: 58.6x H: 70 mm	L: 1500 x W: 58.6x H: 70 mm
Power Consumption Max-燈具功率 Consumo de energía Max	<ul style="list-style-type: none"> <li>• L: 1200 mm : 25W 28W 36W 40W</li> <li>• L: 1500 mm : 45W 50W 55W 60W</li> </ul>	
Input Voltage-輸入電壓-Voltaje de entrada	220-240 VAC 50-60Hz,	
Power Factor / 功率因數/Factor de potencia	PF>0.90 or PF > 0.95 Refer to LED Driver data sheet	
Total Harmonic Distortion/總諧波失/Distorsión armónica total	THD<20% Refer to LED Driver data sheet	
LED Driver Type LED驅動款式 Tipo de controlador LED	Integrated-type LED Driver--Refer to LED driver specification 請參閱LED驅動器規格 Consulte la especificación de controlador de LED 1. ON/OFF Switch AC220-240V 50/60HZ 2. 1-10V Dimming Driver AC200-240V 50/60HZ 3. DALI 1-100% Dimming Driver AC220-240V 50/60HZ 4. DMX Driver AC220-240V 50/60HZ 5. RDM Driver AC220-240V 50/60HZ 8. Remoted Emergency Backup >2 hours or >3 hours @ < 12charger hours 應急電池/Copia de seguridad de emergencia	
Control Protocol-控制協議 Protocolo de Control	1-10V / DALI / DMX 512 / RDM / ZIGBEE Wireless Control	
Beam Angle光束角/ángulo de haz	100° UGR 19	
Light Source Brand-光源品牌-Fuente de luz de marca	SMD LED	
"Lumen Maintenance LM-80 Reported by TM-21"@ 25 °C	L70(10k) > 63,500 hrs	
LED Life-LED壽命-La vida del LED	>60,000 hours	
Color Temperature -色溫 Temperatura del color	2700K / 3000K / 4000K / 5000K / 6500K	
Color Rendering Index-顯色指數 Índice de reproducción cromática	> 80 > 90	
MacAdam Ellipses Binning 麥克亞當橢圓分級 Mac Adam binning elipse	Standard Deviation Colour Matching < 3 SDCM 標準偏差配色 < 3 SDCM Coincidencia de color estándar Desviación < 3 SDCM	
Luminaire Efficacy燈具效率 La eficacia de la luminaria	General Efficacy: 90 Lm/w(2700K), 100 Lm/w(3000K), 100 Lm/w(4000K), 110Lm/w(5000K), 110 Lm/w(6500K) High Efficacy: 130 Lm/w(2700K), 135 Lm/w(3000K), 135 Lm/w(4000K), 140Lm/w(5000K), 140 Lm/w(6500K)	
LED Source Luminous EfficacyLED光源光效 Fuente luminosa LED Eficacia	General Efficacy: 120 Lm/w(2700K), 120Lm/w(3000K), 130 Lm/w(4000K), 145 Lm/w(5000K), 145 Lm/w(6500K) High Efficacy: 160 Lm/w(2700K), 160Lm/w(3000K), 170 Lm/w(4000K), 170 Lm/w(5000K), 170 Lm/w(6500K)	
Housing materials-外殼材料 Materiales de la carcasa	Aluminium and Anti UV Opal Polycarbonate diffuser 鋁和抗紫外線乳白P紋罩 Difusor de Aluminio y Anti UV Opal Policarbonato	
Housing Color外殼顏色 color de la carcasa	Anodized natural color : Matte sliver 陽極氧化本色: 啞光銀 Color natural anodizado: Astilla mate	
Ingress Protection-防護等級 Protección de ingreso	IP40	
Operating Humidity -工作濕度 Humedad de funcionamiento	0~90%, non-condensing-不結霜 sin condensación	
Operating Temperature Range / 工作溫度範圍 Rango de temperatura de funcion amiento	-30 °C / +50 °C	
Comply Testing Standard 符合測試標準 Cumplir el estándar de prueba	LED Luminaries: LVD: IEC/EN 60598-1;EN / IEC/EN 60598-2-1;IEC62471;IEC/EN 62031; IEC/EN 62493 ; IEC/EN 62471 LED Driver: EMC: EN55015 ; IEC/EN 61000-3-2; IEC/EN 61000-3-3;IEC/EN61574 ; RoHS IEC/EN 61347-1; IEC/EN 61347-2-13; IEC/EN 62384; IEC/EN 61000-3-2; IEC/EN 61000-3-3;IEC/EN61574;EN 55015 ; IEC /EN 62384	

Certification-認證-Certificación

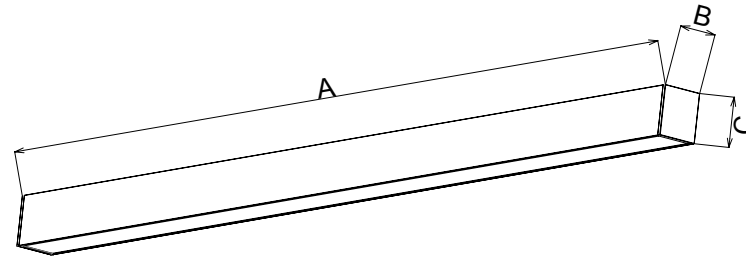




# BEAM ANGLE

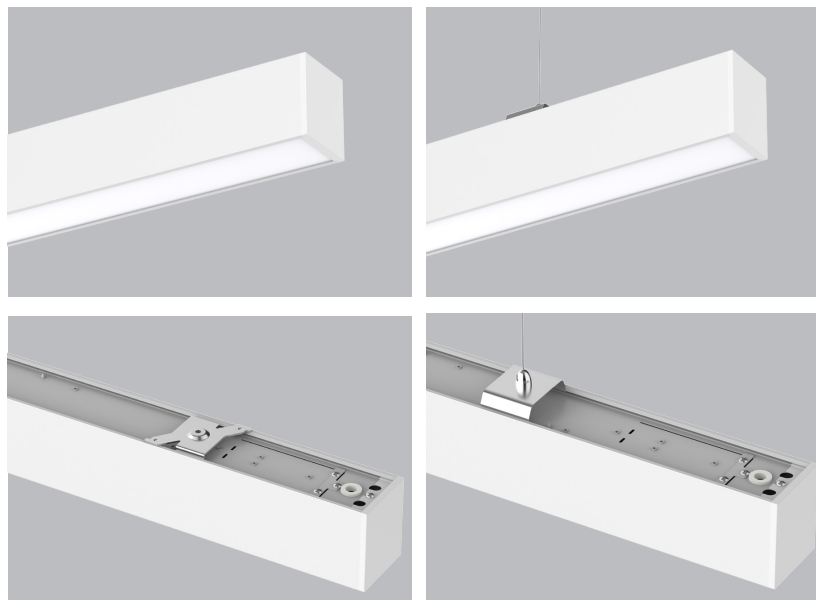


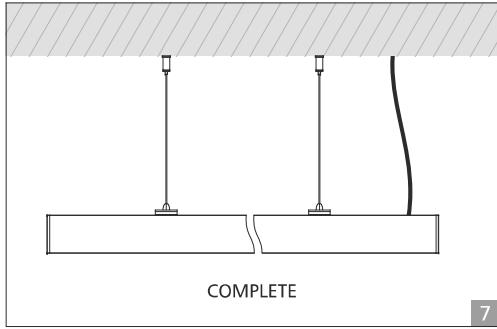
# Technical Drawing



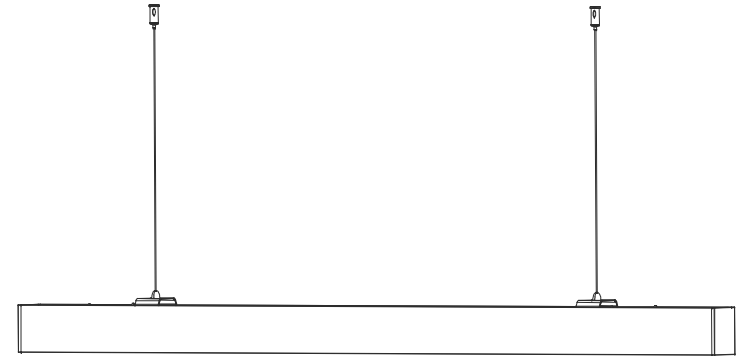
## Measurement

Code	Dimension(mm)			Size(mm)	Product Weight (Kg)		Package weight (Kg)		Carton Size(cm)	Qty/CTN	20GP (pcs)	40HQ (pcs)
	A	B	C		N.W/PC	G.W/PC	N.W/CTN	G.W/CTN				
1.2M	1200	58.6	70	1200*58.6*70	1.27	1.77	7.62	11.62	127*31*25.5	6	1710	4074
1.5M	1500	58.6	70	1500*58.6*70	1.47	2.17	8.82	14.32	157*31*25.5	6	1374	3204





## LED LINEAR USER GUIDE



LED LINEAR USER GUIDE

**DIMON**  
TECHNOLOGY

**LED LINEAR-LASHE-Q**

**Installation Procedure**

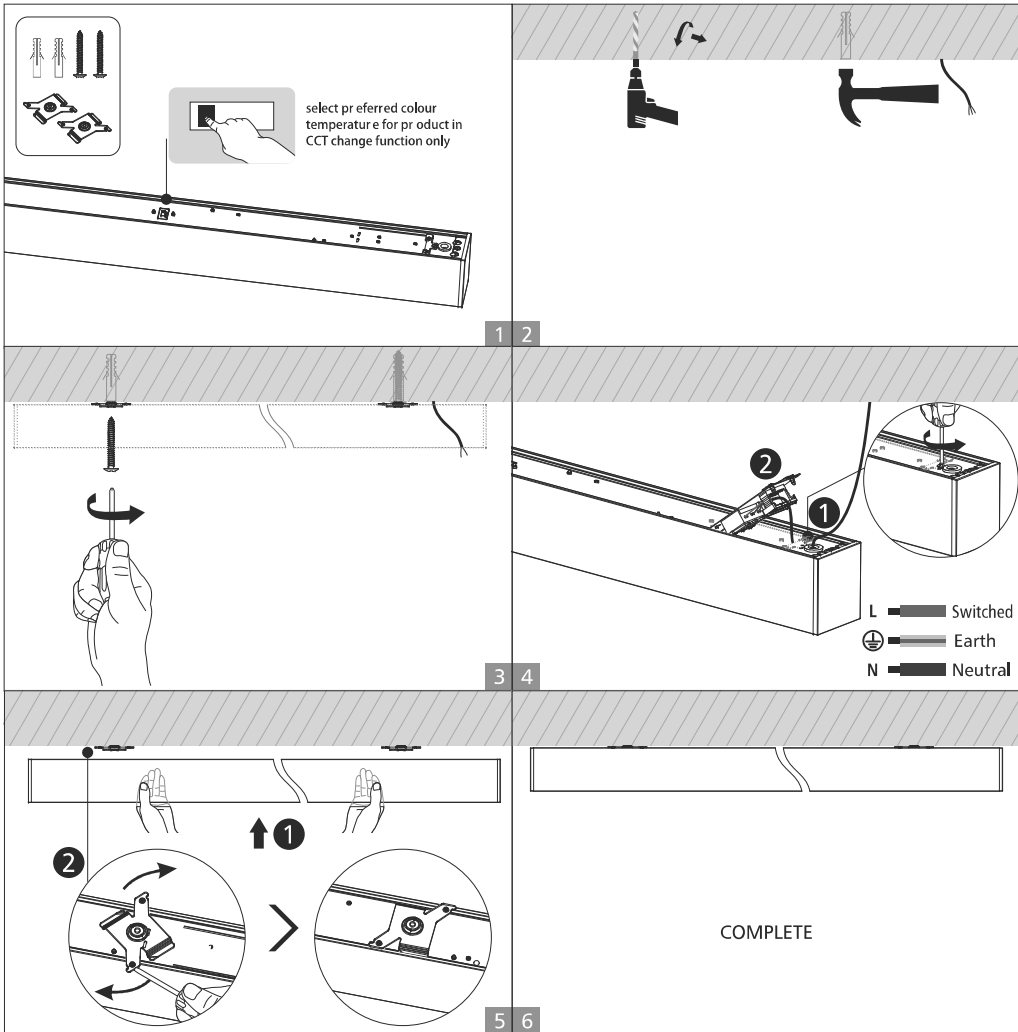
**WARNING**

1. Switch off before installation.
2. Switch on only after complete installation and examination of the circuit.
3. Professional electrician for installation and maintenance only.



Turn Off power supply before starting any installation. Read instructions & check you have all the tools & accessories to complete the installation correctly.

**Surface mounted installation**



**Suspended installation**

