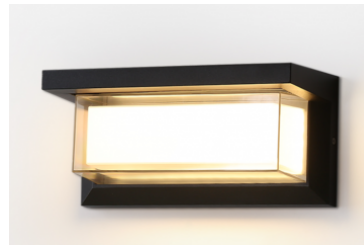
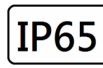


LUBY

IP65 IK08



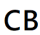


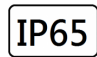


CB



Slim and elegant design ensures a discreet integration without compromising on performance. Suited to various applications such as building exteriors, outdoor corridors, garages, paths and other outdoor environments, wall pack not only provides energy efficient lighting, it delivers a bright white light to ensure perfect visibility and comfort at all times.:

- Contemporary, architectural design and elegant appearance.
- Wall mounting, easy installation with removable back plate.
- IP65, IK08,

Technical Data

Luminaire Type-安裝方式/Tipo de luminaria	Wall mounted 壁裝式/montado en la pared
Dimension-尺寸-Dimensión	W: 260 x H: 125 x D: 125 mm
Input Voltage-輸入電壓-Voltaje de entrada	AC220-240V 50/60HZ
Power Consumption Max-燈具功率 Consumo de energía Max	6W 8W 10W
LED Driver Type LED驅動款式 Tipo de controlador LED	Integrated-type LED Driver--Refer to LED driver specification 請參閱LED驅動器規格 Consulte la especificación de controlador de LED 1. ON/OFF Switch AC220-240V 50/60HZ 2. 1-10V Dimming Driver AC220-240V 50/60HZ 3. Dali Dimming Driver AC220-240V 50/60HZ
LED Driver Features 驅動特性 Funciones del controlador de LED	Power Factor / 功率因數/Factor de potencia: >0.9 Total Harmonic Distortion/總諧波失/Distorsión armónica total: THD <20% Refer to LED Driver data sheet
Control Protocol-控制協議 Protocolo de Control	ON/OFF Dali Control 1-10V Control
Beam Angle光束角/ángulo de haz	Asymmetric
Light Source Brand-光源品牌-Fuente de luz de marca	LED SMD 2835
"Lumen Maintenance LM-80 Reported by TM-21"	L70(10k) > 60,000 hrs
LED Life-LED壽命-La vida del LED	Ambient temperature ta = 25 °C - at 50,000 h: L 90 B 10 - at > 500,000 h: L 70 B 50 max. ambient temperature ta = 50 °C - at 50,000 h: L 90 B 50 - at 160,000 h: L 70 B 50
Color Temperature -色溫 Temperatura del color	3000K / 4000K / 5000K
Color Rendering Index-顯色指數 Índice de reproducción cromática	> 80
MacAdam Ellipses Binning 麥克亞當橢圓分級 Mac Adam binning elipse	Standard Deviation Colour Matching < 3 SDCM 標準偏差配色 < 3 SDCM Coincidencia de color estándar Desviación < 3 SDCM
Luminaire Efficacy 燈具效率 La eficacia de la luminaria	80 Lm/w(3000K), 90 Lm/w(4000K), 100Lm/w(5000K)
LED Source Luminous Efficacy LED光源光效 Fuente luminosa LED Eficacia	150 Lm/w(3000K), 160 Lm/w(4000K), 170Lm/w(5000K)
Housing materials-外殼材料 Materiales de la carcasa	Die-cast aluminium and Anti-UV Polycarbonate Optical Lens 壓鑄鋁和抗紫外線PC光學鏡片 Lente óptica de aluminio fundido y policarbonato anti-UV
Housing Color外殼顏色 color de la carcasa	Anti-corrosion Polyester powders Coating--Matte Black RAL 9005 防腐聚酯粉末塗料-啞光黑RAL 9005 Revestimiento en polvo de poliéster anticorrosión - Negro mate RAL 9005
Ingress Protection-防護等級 Protección de ingreso	IP65
Mech impact protection 機械衝擊保護 Protección contra impactos mecánicos	IK08
Operating Humidity -工作濕度 Humedad de funcionamiento	0~90%, non-condensing-不結霜 sin condensación
Operating Temperature Range / 工作溫度範圍 Rango de temperatura de funcionamiento	-30 °C / +50 °C
Net Weight淨重/Peso Neto	1.5 KG
Certification-認證-Certificación	     

Project	Fixture#	Date
		Firm

Ordering Information

Choose the option that suits your need and write its corresponding code on the appropriate line to form the product code.

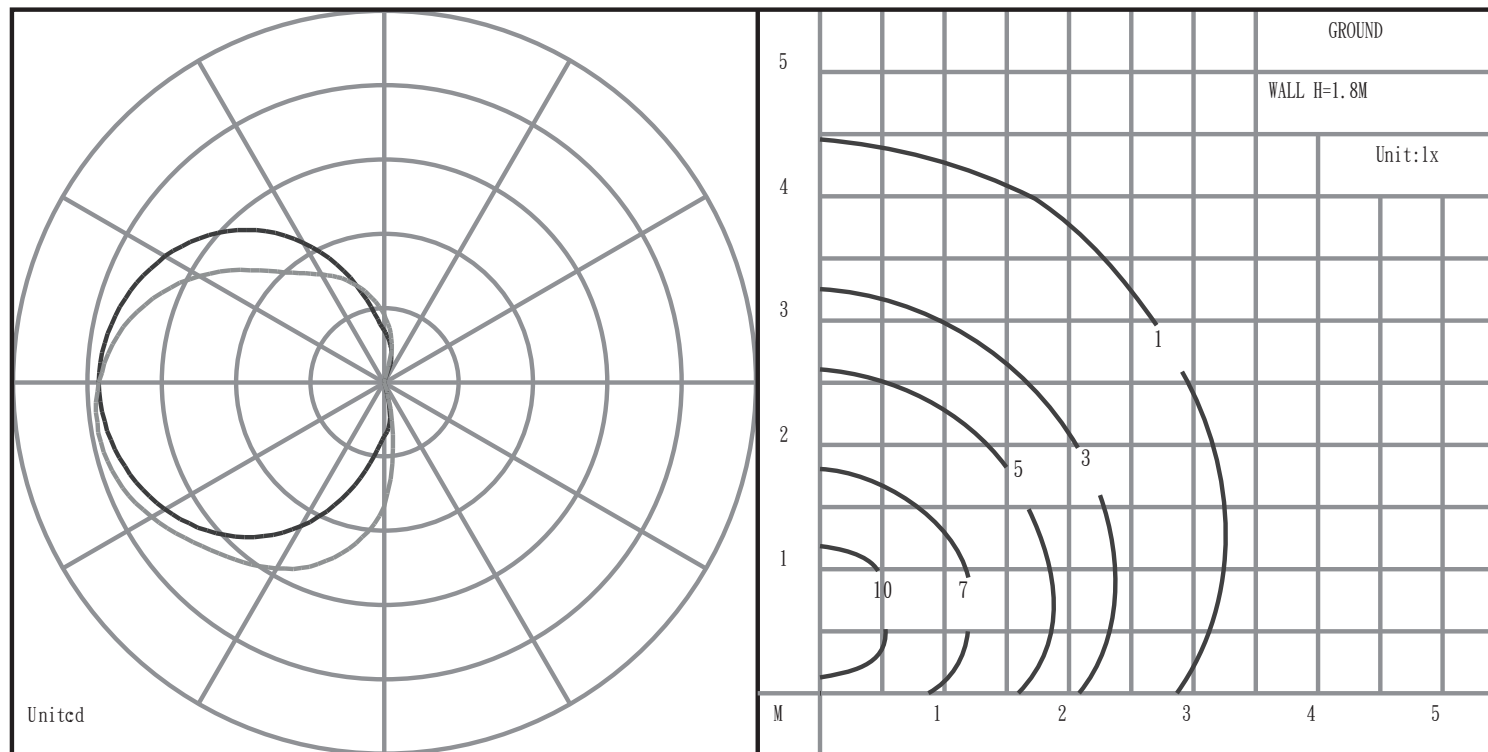
Example product code: [LUBY-8W](#)

LUBY- - _____
Power Consumption

Power Consumption	
Code	Description
6W	6W
8W	8W
10W	10W



BEAM ANGLE



Technical Drawing

