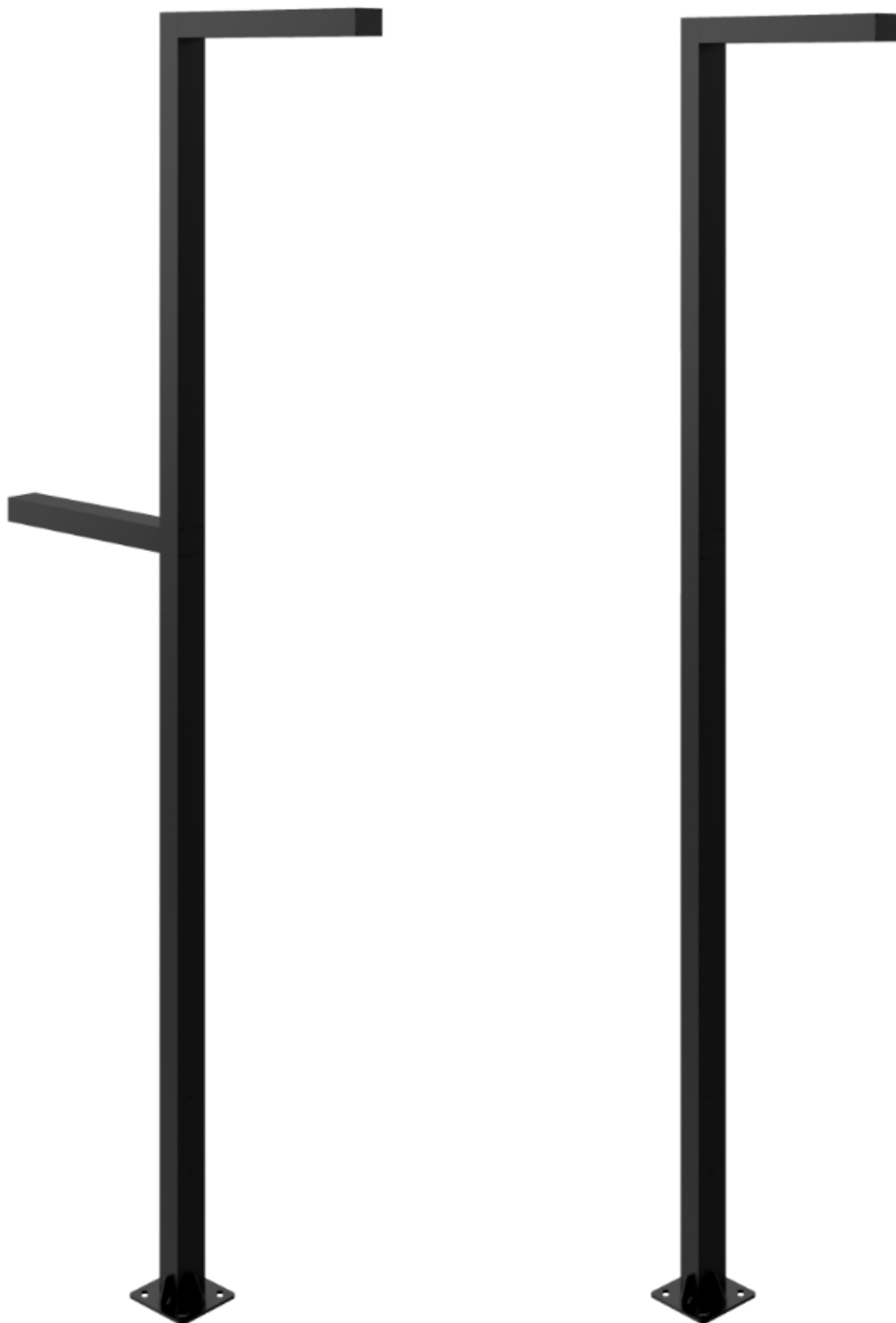


## SOIN Pole Light

W 200 x D 100 x H 5000mm



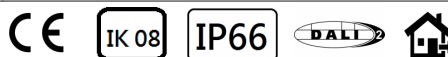
# SOIN Pole Light

W 200 x D 100 x H 5000mm

## Technical Data

Installation method / 安裝方式 / Metodo de instalacion	Anchor Bolt Mounted / 螺栓安裝 / Perno de anclaje montado
Dimension-尺寸-Dimensión	Refer to drawing
Input Voltage-輸入電壓-Voltaje de entrada	AC220-240V 50/60HZ
Power Consumption Max-燈具功率 Consumo de energía Max	30 W Single Lantern / 單燈頭 / Sola linterna 40 W Single Lantern / 單燈頭 / Sola linterna 50 W Single Lantern / 單燈頭 / Sola linterna 60 W (2 x 30W) Twin Lantern / 雙燈頭 / Linterna gemela 80 W (2 x 40W) Twin Lantern / 雙燈頭 / Linterna gemela 100 W (2 x 50W) Twin Lantern / 雙燈頭 / Linterna gemela
LED Driver Type LED驅動款式 Tipo de controlador LED	Integrated-type LED Driver--Refer to LED driver specification 請參閱LED驅動器規格 Consulte la especificación de controlador de LED 1. ON/OFF Switch AC220-240V 50/60HZ 2. ELV Dimming Driver (5-100%) AC 100-120V 50/60Hz or AC 220-240V 50/60HZ 3. 0/1 -10V Dimming Driver AC220-240V 50/60HZ 4. DALI Dimming Driver AC220-240V 50/60HZ
Power Factor / 功率因數/Factor de potencia	PF > 0.95
Total Harmonic Distortion/總諧波失/Distorsión armónica total	THD<15%
Protection Against Surges / 防護措施 / PROTECCIÓN CONTRA LAS PROMOCIONES:	2kV line-line 4kV line-earth
Light Source Brand-光源品牌-Fuente de luz de marca	LUMILEDS / CREE / OSRAM ( Photobiological safety-IEC 62471 'Risk Group 1' (low risk) )
"Lumen Maintenance LM-80 Reported by TM-21" ta = 40 °C	L70 > 54,000 hrs
LED Life-LED壽命-La vida del LED	>100,000 hours
Color Temperature -色溫 Temperatura del color	3000K / 4000K / 5000K / 5700K / 6500K
Color Rendering Index-顯色指數 Índice de reproducción cromática	> 70 > 80
MacAdam Ellipses Binning 麥克亞當橢圓分級 Mac Adam binning elipse	Standard Deviation Colour Matching < 3 SDCM 標準偏差配色< 3 SDCM Coincidencia de color estándar Desviación < 3 SDCM
Beam Angle 光束角 ángulo de haz	Refer to Lighting Distributions
Luminaire Efficacy 燈具效率 La eficacia de la luminaria	100 Lm/w (3000K) 110 Lm/w (4000K) 120 Lm/w (5000K) 120 Lm/w (5700K) 120 Lm/w (6500K)
LED Source Luminous Efficacy LED光源光效 Fuente luminosa LED Eficacia	130 Lm/w (3000K) 140 Lm/w (4000K) 160 Lm/w (5000K) 160 Lm/w (5700K) 160 Lm/w (6500K)
Housing materials-外殼材料 Materiales de la carcasa	Aluminium alloy, Silicone gasket and stainless steel Screws 鋁合金, 矽膠墊圈和不銹鋼螺絲 Aleación de aluminio, junta de silicona y tornillos de acero inoxidable.
Housing Color 外殼顏色 color de la carcasa	Polyester powders Coating / 聚酯粉末塗料 / Recubrimiento de poliéster en polvo Black @ RAL 9005 / 黑色@RAL 9005 / Negra @ RAL 9005
Ingress Protection-防護等級 Protección de ingreso	IP66
Mech impact protection 機械衝擊保護 Protección contra impactos mecánicos	IK08
Operating Temperature Range / 工作溫度範圍 Rango de temperatura de funcionamiento	-20 °C / +50 °C
Operating Humidity -工作濕度 Humedad de funcionamiento	0~90%, non-condensing-不結霜 sin condensación
Certificate Standard Complied 符合安規標準 estándar certificado de cumplimiento	LED Luminaries: LVD: EN60598-1;IEC 60598-2-3; EMC : EN55015; EN 61547; EN 61000-3-2 ;EN 61000-3-3 LED Driver: IEC/EN 61347-1; IEC/EN 61347-2-13; IEC/EN 61000-3-2; IEC/EN 61000-3-3;IEC/EN61574;EN 55015H Hot-dip galvanised steel according to EN ISO 1461

Certification-認證-Certificación



Project	Fixture#	Date
		Firm

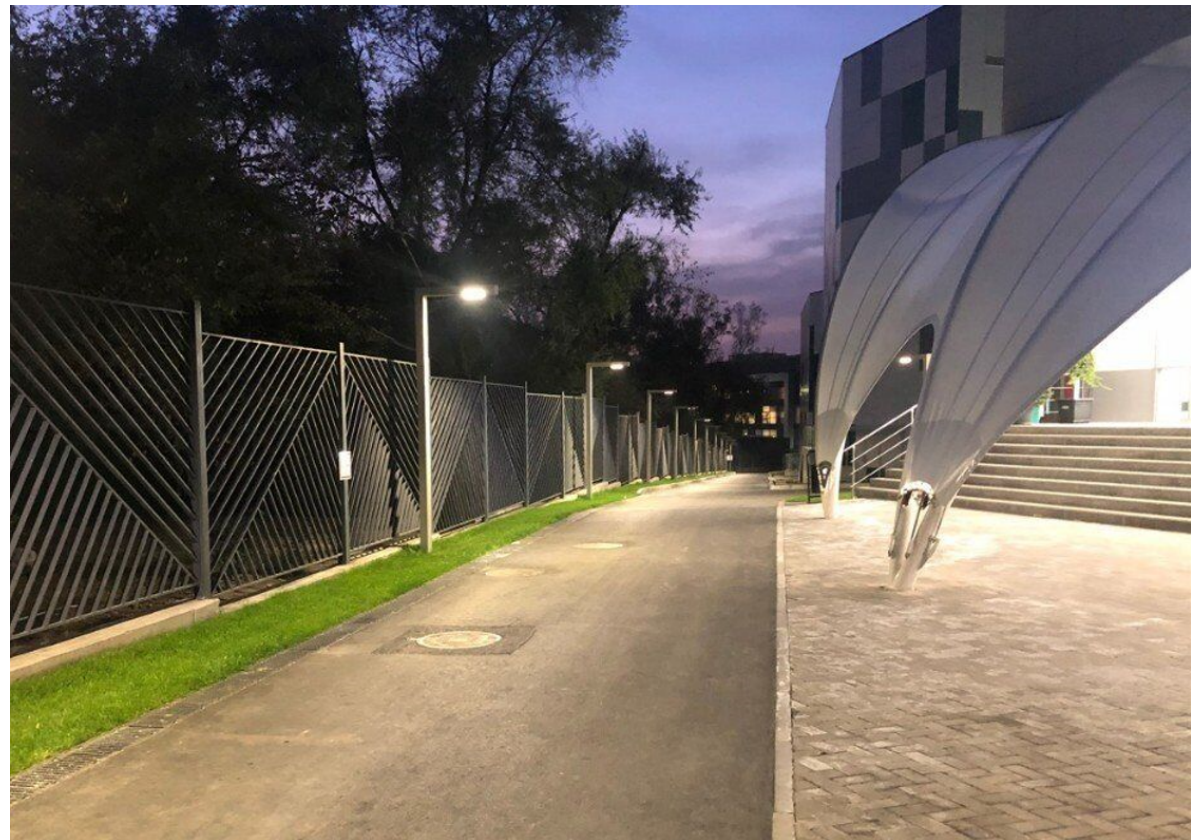
## Ordering Information

Choose the option that suits your need and write its corresponding code on the appropriate line to form the product code.

Example product code: [SOIN-50W](#)

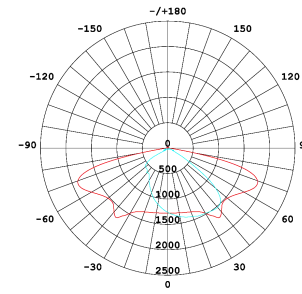
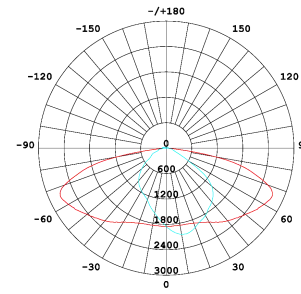
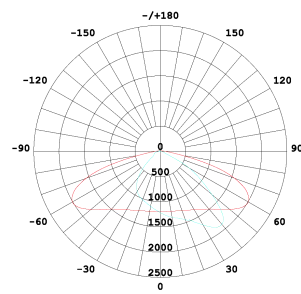
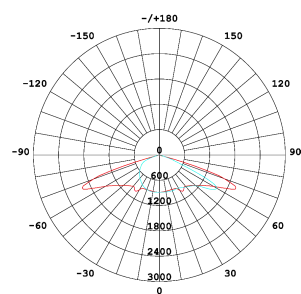
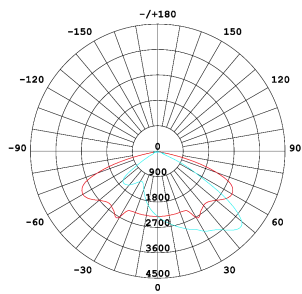
SOIN - \_\_\_\_\_  
Power Consumption

Power Consumption	
Code	Description
<a href="#">30W</a>	30W Single Lantern
<a href="#">40W</a>	40W Single Lantern
<a href="#">50W</a>	50W Single Lantern
<a href="#">60W</a>	60W ( 2 x 30W) Twin Lantern
<a href="#">80W</a>	80W (2 x 40W) Twin Lantern
<a href="#">100W</a>	100W (2 x 50W) Twin Lantern



# Lighting Distributions

T2S1324      T2S(V)2322      T2S5321      T2S2321      T3M1321



25D1325      40D5340      60D2360      90D5390      LBN1310      Tunnel lighting 1390

