

WEGE X



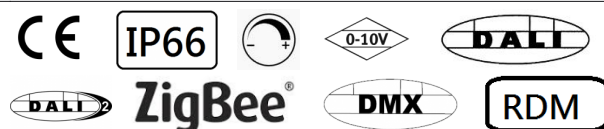
LED Wallwasher light is a indoor and outdoor fixture with mono color for façade application. It is able to be controlled by 0-10V, Dali, DMX and RDM. Uilt-in 16-bit PWM embedded LED IC, featuring 16-bit gray scale control, supports up to 65,536 gray scales for color depths. The high visual refresh rate can facilitate CCD cameras and video cameras to capture the full video images in real time without flickers.

Luminaire Type/ 安裝方式
Tipo de luminaria

Surface Mount and Adjustable Type
明裝可調安裝腳
Tipo mount en superficie y ajustable

Power Consumption Max 燈具最大功率 Consumo de energía Max	L: 500mm 12W 18W L: 1000mm : 24W 36W
Input Voltage / 輸入電壓 Voltaje de entrada	• DC24V • DC24V + DMX 512 Control
Control Protocol-控制協議 Protocolo de Control	• Integrated Decoder : DMX512 + DC24V • Integrated Decoder : DMX512 + DC48V • Remote LED Driver for 1-10V
Beam Angle/光束角 ángulo de haz	9° / 15° / 22° / 30° / 40° / 66° / 83° 30° x 12° / 40° x15° / 50° x10°
Light Source Brand/光源品牌 Fuente de luz de marca	OSRAM LED
Color Temperature -色溫 Temperatura del color	2700K / 3000K / 4000K / 5000K / 6500K
LED Life/LED壽命 La vida del LED	>50,000 hours
Color Rendering Index-顯色指數 Índice de reproducción cromática	>80 >90
MacAdam Ellipses Binning 麥克亞當橢圓分級 Mac Adam binning ellipse	Standard Deviation Colour Matching < 3 SDCM 標準偏差配色 < 3 SDCM Coincidencia de color estándar Desviación < 3 SDCM
Luminaire Efficacy-燈具效率 La eficacia de la luminaria	• 75 Lm/w(2700K), 75 Lm/w(3000K), 80 Lm/w(4000K), • 85 Lm/w(5000K), 85 Lm/w(6500K), 80 Lm/w Tunable White (2700-6500K) • 60 Lm/w @ RGB (DMX -3 Pixel 9 DMX address)
LED Source Luminous Efficacy-LED光源光效 Fuente luminosa LED Eficacia	• 120 Lm/w(2700K) 120 Lm/w(3000K) 125 Lm/w(4000K) • 130 Lm/w(5000K) 130 Lm/w(6500K) 125Lm/w Tunable White (2700-6500K) • 100 Lm/w @ RGB
Housing materials/外殼材料 Materiales de la carcasa	Aluminium Alloy and 4mm Tempered Glass 鋁合金和4mm厚鋼化玻璃 Aleación de aluminio y 4mm vidrio templado
Trim Housing Color/ 邊框殼顏色	Anodised Aluminium Titanium and Tempered Glass /陽極氧化鋁鈦和鋼化玻璃 Aluminio anodizado titanio y vidrio templado Anodised Aluminium Black and Tempered Glass /陽極氧化鋁黑和鋼化玻璃 Aluminio anodizado Negro y vidrio templado Tailor-made/客制生產-Hecho a medida
Operating Temperature Range / 工作溫度範圍 Rango de temperatura de funcionamiento	-20 °C / +50 °C
Operating Humidity -工作濕度 Humedad de funcionamiento	0~100%, non-condensing-不結霜 sin condensación
Ingress Protection/ 防護等級 Protección de ingreso	IP66
Dimension/尺寸 Dimensión	• Refer to drawing
Comply Testing Standard 符合測試標準 Cumplir el estándar de prueba	• LED Luminaries: LVD: IEC 60598-1; IEC 60598-2-1; IEC62471; IEC 62031; IEC62471 • LED Driver: IEC/EN 61347-1; IEC/EN 61347-2-13; IEC/EN 62384; IEC/EN 61000-3-2; • IEC/EN 61000-3-3; IEC/EN61574; EN 55015 ; IEC /EN 62384

Certification-認證-Certificación



Project	Fixture#	Date
		Firm



Ordering Information

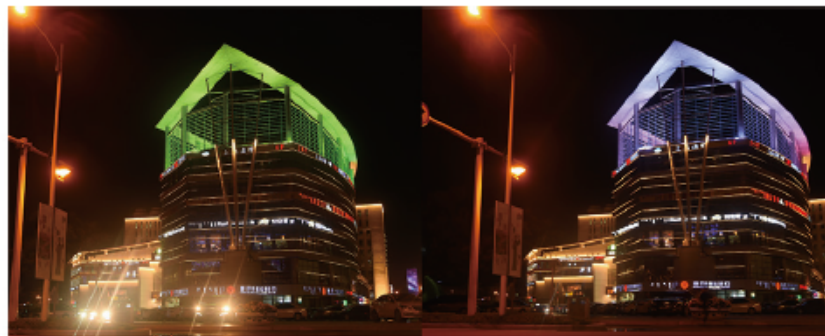
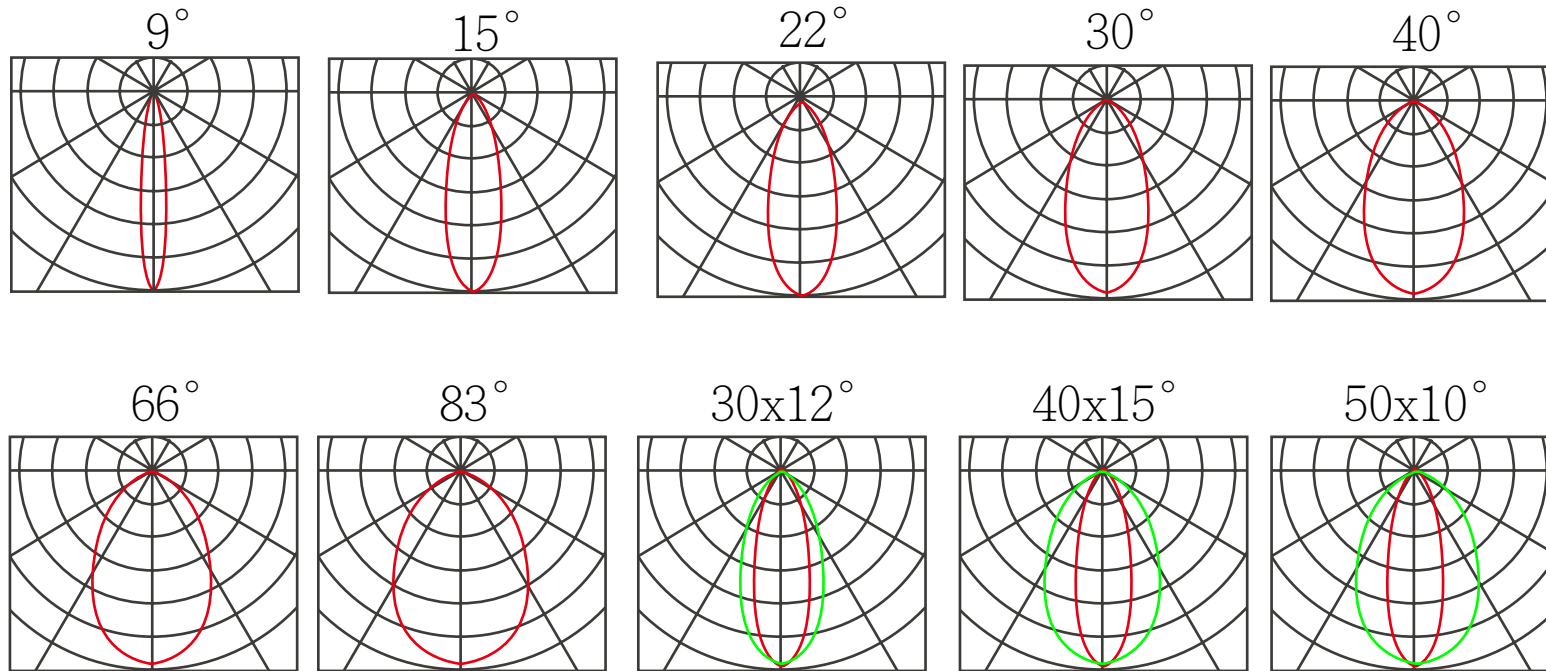
Choose the option that suits your need and write its corresponding code on the appropriate line to form the product code.

Example product code: [WEGE-24W](#)

WEGE - - _____
Power Consumption

Power Consumption	
Code	Description
12W	12W@L:500mm
18W	18W@L:500mm
24W	24W@L:1000mm
36W	36W@L:1000mm

BEAM ANGLE



Visor accessories

